



Abraham Lake #3

<https://archives.whyte.org/en/permalink/artifactgrl.01.07>

Artist:	Les Graff (1936 – , Canadian)
Title:	Abraham Lake #3
Date:	2000 – 2000
Medium:	oil on masonite board
Dimensions:	40.5 x 40.5 cm
Description:	An oil sketch of a lake landscape. The primary colours used are green, grey, blue and brown. The sky is dominated with thick grey strokes of colour. Surrounding the water at the top and bottom are thick strokes of green. The blue of the water is a streak across the middle of the work. The artist's signature is in the brhc in green paint.
Subject:	landscape lake
Credit:	Gift of Les Graff, Bashaw, 2006
Catalogue Number:	GrL.01.07

Images



This material is presented as originally created; it may contain outdated cultural descriptions and potentially offensive content. [Read more.](#)



Abraham Lake/East

<https://archives.whyte.org/en/permalink/artifactgrl.01.17>

Artist:	Les Graff (1936 – , Canadian)
Title:	Abraham Lake/East
Date:	2001 – 2001
Medium:	oil on masonite board
Dimensions:	40 x 40.5 cm
Description:	An oil sketch of a mountain landscape. The primary colours used are blue, orange, red and brown. The image is composed of a mountain range in the background, with a body of water and a segment of land in the foreground. The artist's signature is in the brhc in grey paint. Au verso, written in black ink in the trhc, "45/W".
Subject:	landscape mountain lake
Credit:	Gift of Les Graff, Bashaw, 2006
Catalogue Number:	GrL.01.17

Images



This material is presented as originally created; it may contain outdated cultural descriptions and potentially offensive content. [Read more.](#)



Across the North Saskatchewan River/Shadows

<https://archives.whyte.org/en/permalink/artifactgrl.01.28>

Artist:	Les Graff (1936 – , Canadian)
Title:	Across the North Saskatchewan River/Shadows
Date:	2003 – 2003
Medium:	oil on masonite board
Dimensions:	35.6 x 40.7 cm
Description:	An oil sketch of a landscape. The primary colours used are green, grey, purple and beige. The upper third of the piece is in green, red and beige, with the shadows of the trees depicted as red lines. The majority of the canvas centre is grey, with a variety of colours on the right centre. The artist's signature is in the blhc in purple paint. Au verso, written in black ink in the tlhc, "47/R".
Subject:	landscape river shadow
Credit:	Gift of Les Graff, Bashaw, 2007
Catalogue Number:	GrL.01.28

Images



This material is presented as originally created; it may contain outdated cultural descriptions and potentially offensive content. [Read more.](#)



Approaching Rain - West Kootenay Plains #1

<https://archives.whyte.org/en/permalink/artifactgrl.01.39>

Artist:	Les Graff (1936 – , Canadian)
Title:	Approaching Rain - West Kootenay Plains #1
Date:	2005 – 2005
Medium:	oil on masonite board
Dimensions:	40.5 x 40.5 cm
Description:	<p>An oil sketch of a mountain landscape. The primary colours are grey, brown, and blue. From the left side of the image raises a dark grey mountain lined in blue. The lower part of this mountain extends to the right side of the canvas. The sky is grey with modeling that suggests the presence of clouds, or a storm. The bottom of the piece has a small strip of blue, above which there are a series of vertical forms in green, blue and grey which could represent trees. The artist's signature is in the brhc in orange paint. Au verso, written in black ink in the tlhc, "49/W".</p>
Subject:	landscape mountain
Credit:	Gift of Les Graff, Bashaw, 2008
Catalogue Number:	GrL.01.39

Images



This material is presented as originally created; it may contain outdated cultural descriptions and potentially offensive content. [Read more.](#)



Approaching Rain - West Kootenay Plains #2

<https://archives.whyte.org/en/permalink/artifactgrl.01.40>

Artist:	Les Graff (1936 – , Canadian)
Title:	Approaching Rain - West Kootenay Plains #2
Date:	2005 – 2005
Medium:	oil on masonite board
Dimensions:	40.5 x 40.5 cm
Description:	<p>An oil sketch of a mountain landscape. The primary colours used are grey, purple and beige. The sky is composed of swirls of grey , and the mountain on the left rises high into the sky and runs low across the centre of the work towards the right. The lower third of the work is blue, with lines of mottled green and beige. The artist's signature is in the brhc in purple paint. Au verso, written in black ink in the tlhc, "49/X".</p>
Subject:	landscape mountains
Credit:	Gift of Les Graff, Bashaw, 2008
Catalogue Number:	GrL.01.40

Images



This material is presented as originally created; it may contain outdated cultural descriptions and potentially offensive content. [Read more.](#)



Approaching Rain - West Kootenay Plains #3

<https://archives.whyte.org/en/permalink/artifactgrl.01.41>

Artist:	Les Graff (1936 – , Canadian)
Title:	Approaching Rain - West Kootenay Plains #3
Date:	2005 – 2005
Medium:	oil on masonite board
Dimensions:	35.6 x 45.7 cm
Description:	<p>An oil sketch of a mountain landscape. The primary colours used are grey, purple, green and beige. From the left side of the image raises a grey mountain in light and dark grey sections. The lower part of this mountain extends to the right side of the canvas. The sky is grey with modeling that suggests the presence of clouds, or a storm. The bottom of the piece has a small strip of grey-blue, above which there is a line of green. The artist's signature is in the brhc in grey paint. Au verso, written in black ink in the tlhc, "49/Y".</p>
Subject:	landscape mountain
Credit:	Gift of Les Graff, Bashaw, 2008
Catalogue Number:	GrL.01.41

Images



This material is presented as originally created; it may contain outdated cultural descriptions and potentially offensive content. [Read more.](#)



Bow Lake Study #1

<https://archives.whyte.org/en/permalink/artifactgrl.01.20>

Artist:	Les Graff (1936 – , Canadian)
Title:	Bow Lake Study #1
Date:	2001 – 2001
Medium:	oil on masonite board
Dimensions:	40.5 x 40.5 cm
Description:	<p>An oil sketch of a mountain landscape. The primary colours used are green, blue, yellow and purple. The top section of the image represents the mountains, rendered with intersecting horizontal and vertical lines. The bottom third of the image represents the water, which is also intersected with vertical lines on the right of the piece. The artist's signature is in the brhc in red paint. Au verso, written in black ink in the tlhc, "45/P".</p>
Subject:	landscape mountain Bow Lake
Credit:	Gift of Les Graff, Bashaw, 2006
Catalogue Number:	GrL.01.20

Images



This material is presented as originally created; it may contain outdated cultural descriptions and potentially offensive content. [Read more.](#)



Bow Lake Study #4

<https://archives.whyte.org/en/permalink/artifactgrl.01.19>

Artist:	Les Graff (1936 – , Canadian)
Title:	Bow Lake Study #4
Date:	2001 – 2001
Medium:	oil on masonite
Dimensions:	40.5 x 40.5 cm
Description:	An oil sketch of a mountain landscape. The primary colours are blue, green, purple, orange and brown. The piece is dominated by one mountain, painted in a variety of colours. The bottom third of the image is blue. The artist's signature is in the brhc in green paint. Au verso, written in black ink in the tlhc, "45/S".
Subject:	landscape mountain Bow Lake
Credit:	Gift of Les Graff, Bashaw, 2006
Catalogue Number:	GrL.01.19

Images



This material is presented as originally created; it may contain outdated cultural descriptions and potentially offensive content. [Read more.](#)

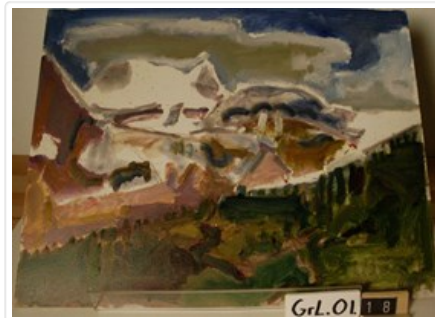


Bow Lake Study #5

<https://archives.whyte.org/en/permalink/artifactgrl.01.18>

Artist:	Les Graff (1936 – , Canadian)
Title:	Bow Lake Study #5
Date:	2001 – 2001
Medium:	oil on masonite board
Dimensions:	35.6 x 45.7 cm
Description:	An oil sketch of a mountain landscape. The primary colours are white, blue, purple and green. The top of the image is blue, with grey clouds. The mountains are represented in the centre of the image in tones of purple, white and blue. The bottom third of the image is a mixture of purple and green. The artist's signature is in the bottom right in grey paint. Au verso, written in black ink in the top left, "45/T".
Subject:	landscape mountain forest Bow Lake
Credit:	Gift of Les Graff, Bashaw, 2006
Catalogue Number:	GrL.01.18

Images



This material is presented as originally created; it may contain outdated cultural descriptions and potentially offensive content. [Read more.](#)



Glacier Study #1

<https://archives.whyte.org/en/permalink/artifactgrl.01.46>

Artist: Les Graff (1936 – , Canadian)

Title: Glacier Study #1

Date: 2006 – 2006

Medium: oil on masonite board

Dimensions: 35.6 x 45.7 cm

Description: An oil sketch of a mountain landscape. The primary colours used are blue, green, purple and beige. The sky is a solid wash of blue, and the remainder of the work is a mixture of shades, prominently green on the left, beige closer to the sky, and purple mixed with green on the right. One of the mountains on the left is highlighted with a stroke of orange. The glacier is in the centre right of the image. The artist's signature is in the brhc in blue paint. Au verso, written in black ink in the tlhc, "50/A-3".

Subject: landscape

mountain

glacier

Credit: Gift of Les Graff, Bashaw, 2008

Catalogue Number: GrL.01.46

Images



This material is presented as originally created; it may contain outdated cultural descriptions and potentially offensive content. [Read more.](#)