



### Jimmy and Billie Simpson, Num-Ti-Jah Lodge, family events

<https://archives.whyte.org/en/permalink/descriptions54594>

Part Of: Kidney family fonds

Description Level: 5 / File

Fonds Number: M74 / V324

Series: V324 / IV : Family, friends and community records

Sous-Fonds: V324

Sub-Series: V324 / IV / E : Maude Kidney Collection

Accession Number: 3109

Reference Code: V324 / IV / E / PA - 105 to 144

GMD: Photograph  
Photograph print

Date Range: [ca. 1910 - ca. 1915]  
1964  
1968  
[ca. 1970]  
1974

Physical Description: 44 photographs : b&w and col. prints ; 9 x 13.5 cm or smaller

History /  
Biographical:

See fonds-level entry for Jimmy Simpson family fonds [M78 / S16 / V577]

#### Scope & Content:

File consists of 44 photographs, including 2 postcard photographs, pertaining to Annie and Ulysses LaCasse's 50th wedding anniversary and Maud Kidney and friends visiting Jimmy and Billie Simpson at Num-Ti-Jah Lodge. Many individuals in photographs are unnamed. Postcard photographs are of Jimmy Simpson Sr. and Num-Ti-Jah Lodge.

Notes: File contains duplicates

Some dates provided are estimate by the Processing Archivist

Photographs in this file were accompanied by notes made shortly before or after accession in 1979 giving names/contextual information about photographs. Some notes are by Jim Deegan, 1987. Information has been transferred to the back of each photograph.

Name Access: LaCasse, Annie  
 LaCasse, Ulysses  
 LaCasse, Flo  
 Whyte, Catharine  
 Craig, Bill  
 Boyce, Jim  
 Brooks, Glen  
 Kidney, Maude  
 Kidney, Forest H. (Pop)  
 Gratz, Muriel  
 Simpson, Billie  
 Simpson, Jimmy, Sr.  
 Lonsdale, Florence  
 Woodworth, Adelia  
 Nickerson, Adelia  
 Harrison, George  
 Harrison, Nellie  
 Lonsdale, Tom

Subject Access: Num-Ti-Jah Lodge  
 Travel  
 Anniversary  
 Family and personal life

Geographic Access: Canada  
 Alberta  
 Banff  
 Bow Lake  
 Lake Louise

Access Restrictions: Restrictions may apply

Reproduction Restrictions: Restrictions may apply

Language: English

Category: Family and personal life

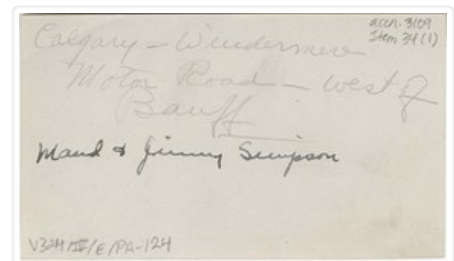
Title Source: Title based on contents of file

Processing Status: Processed

## Images



OrderRemove



OrderRemove



OrderRemove



OrderRemove

This material is presented as originally created; it may contain outdated cultural descriptions and potentially offensive content. [Read more.](#)



## Jimmy Simpson family fonds

<https://archives.whyte.org/en/permalink/descriptions444>

Part Of:	Jimmy Simpson family fonds
Description Level:	1 / Fonds
Fonds Number:	M 78 S 16 V 577
Sous-Fonds:	M 78 S 16 V 577
Accession Number:	256, 492, 1035, 1160, 1422, 1467, 1484, 1625, 1655, 1668, 1869, 2930, 3006, 5302, 6356, 6599, 6771, 6914, 7217, 7337 (unproc o.s.), 7768 (unproc)
Reference Code:	M78 / S16 / V577
GMD:	Photograph Album Negative Photograph print Transparency Sound recording Recording disc Textual record Blueprint Drawing Painting Poster Private record Published record Scrapbook
Other Title Info:	Also known as Jimmy Simpson fonds

Date Range: [ca.1900]-1995

Physical Description: 2.5 m textual records. -- ca.1605 photographs: ca.755 prints, 410 negatives, ca.430 transparencies. -- 29 photograph albums (ca.3000 prints). -- 1 sound recording: audio disc

History /

Biographical:

Justin James McCarthy (Jimmy) Simpson, 1877-1972, was a trapper, guide and outfitter and lodge owner at Banff and Bow Lake, Alberta, Canada. Born in Stamford, Lincolnshire, Simpson was sent to Canada by his family in 1896. He worked briefly at Laggan (Lake Louise), Alberta for the Canadian Pacific Railway, travelled extensively and returned to the Rockies to work on the trail and trap. By the early 1900s, he was a successful guide and outfitter with Carl Rungius and the Alpine Club of Canada as clients. Starting in 1920, Simpson began building Num-Ti-Jah Lodge at Bow Lake as a base for hunting and climbing parties. Simpson and Williamina (Billie) Ross Reid, 1891-1968, married in 1916 and had three children. The lodge was run mainly by Billie Simpson and in 1945 the business was turned over to Jimmy Simpson Jr., 1922-2003. Daughters Margaret Simpson, 1917-1941, and Mary Simpson (Hallock), 1919-2002, were internationally-famous figure skaters.

Scope & Content:

Fonds consists of papers, photographs and sound recording produced by and pertaining to Jimmy Simpson and the Simpson family. Material is arranged in seven series.

I. Jimmy Simpson Sr. papers and photographs, ca.1901-1972, ca.74 cm of textual records, 23 photograph albums (ca.2875 prints), 425 transparencies. Includes business and personal correspondence, business records and subject files, 1903-1972; literary papers, 1912-1972; and other papers, 1903- 1957. Business records pertain mainly to guiding, outfitting and hunting operations. Correspondents include Carl Rungius, J. Monroe Thorington, L. S. Amery, Louis Agassiz Fuertes, William S. Ladd, C. Hart Merriam, Allan Brooks and others; also federal and provincial government departments, Canadian Pacific Railway, etc., regarding hunting, game regulations, park boundaries, licences, permits, horses, etc. Albums pertain mainly to hunting trips, including those with Carl Rungius, Caroline Hinman and McAleenan family, ca.1901-ca.1920, 23 items. Transparencies pertain to McAleenan family trips.

II. Simpson family papers, photographs and sound recording, ca.1900-1987, ca.1.5 m of textual records, ca.675 photographic prints, 6 photograph albums (ca.460 prints), 410 photographic negatives, 1 sound recording. Textual records include large series of alphabetical files, 1907-1987; correspondence, ca.1910-ca.1985; school records, 1923-1936; Num-Ti-Jah Lodge registers, 1939-1957; other material, 1929-1942. Photographs pertain to Jimmy Simpson and family; friends and guests; lodges and camps, including Num-Ti-Jah Lodge; Banff home and community; pack trips; scenic views; other.

III. Billie Simpson papers, 1913-1968, 6.5 cm of textual records. Includes Billie Simpson correspondence, literary and dramatic papers.

IV. Simpson Sisters professional papers and photographs, 1929-1955, ca.20 cm and 3 v. of textual material, ca.15 cm of print material, 86 photographic prints. Material pertains to the professional skating career of Margaret Simpson and Mary Simpson.

V. Mary Simpson Hallock papers, 1960-1955, 1.5 cm of textual records.

VI. Jimmy Simpson Jr. papers, 1947-1983, 1 cm of textual records.

VII. Other material, before 1970, 1 cm of textual records and art works.

Name Access: Simpson, Billie  
Simpson, Jimmy, Jr.  
Simpson, Jimmy, Sr.  
Simpson, Margaret  
Simpson, Mary (Hallock)

Subject Access:	Exploration, discovery and travel Family and personal life Sports, recreation and leisure
Access Restrictions:	Some restrictions on access to originals Copyright, privacy, commercial use and other restrictions may apply
Language:	Language is English
Finding Aid:	Finding aids and reference tools: arrangement outline sub-series description electronic finding aid microfilm copies of albums
Related Material:	Accompanied by artifacts (Heritage Collections, Whyte Museum)
Creator:	Simpson, Jimmy (family)
Category:	Exploration, discovery and travel Family and personal life Sports, recreation and leisure
Title Source:	Title based on contents of fonds
Processing Status:	Processed / Unprocessed

This material is presented as originally created; it may contain outdated cultural descriptions and potentially offensive content. [Read more.](#)



## Kidney family fonds

<https://archives.whyte.org/en/permalink/descriptions260>

Part Of:	Kidney family fonds
Description Level:	1 / Fonds
Fonds Number:	M74 / V324
Sous-Fonds:	M74 V324
Accession Number:	452 629 798 929 1843 2143 2177 2275 2780 2983 3109 2016.8581
Reference Code:	M74 / V324

GMD: Photograph  
 Negative  
 Photograph print  
 Postcard  
 Textual record  
 Corporate record  
 Private record  
 Published record

Date Range: 1886 - 2013

Physical Description: 66 cm of textual records -- ca. 963 photographs : 870 prints, 62 postcards, 30 negatives, 1 tintype (31.5 x 37 cm or smaller) -- 7 photograph albums (26 x 33.5 cm or smaller)

History /  
 Biographical:

Ella Maud [Woodworth] Kidney (1894-1977) was born in Banff as the fourth of 11 siblings. Her parents were Benjamin Woodworth and Elizabeth [McIntire] Woodworth. Growing up, Maud worked briefly for the Alberta Hotel and the Bottling Works company in Banff. Maud was married to John A. MacAulay in 1917, and widowed later that year. Her twin sons, John A. [Jack] and Thomas A. [Ted] MacAulay, were born in 1918. Maud married Forest H. "Pop" Kidney (1889-1979) on February 14, 1923, and the new family settled into the Kidney home on Wolf and Muskrat Street. The Kidney residence was originally located in Bankhead, but was moved to Banff and sold following the town's closure in 1922.

Maud and Forest operated several local businesses including Banff Grocery, Quaker Coffee Shop, Pop's Bakery and Kidney Kabins. The Kidneys were also active in community affairs throughout their lives. Maud Kidney was a long-time member of the Girls' Sunshine Flower Club in Banff [and the club's president for over a decade spanning across the 1940's], as well as the Imperial Order Daughters of the Empire [I.O.D.E.] and Rebekah Lodge, and she was matron of the Order of the Eastern Star in Banff in 1950. Forest Kidney was involved in the Banff Shriners Club, the Kiwanis Club, the Independent Order of Oddfellows and the Canadian Restaurants Association [CRA], among other groups; in the early 1960's, Forest also served as the President of the Calgary branch of the CRA.

Jack and Ted MacAulay grew up together in Banff, where they were involved in Banff's Boy Scouts program and local hockey teams. Jack in particular was an avid hockey player, until an accident in 1940 caused damage to his right eye which kept him from competing. From 1943 to 1945, Jack worked for Boeing Aircraft of Canada Ltd., and in 1946 he was appointed as the Chief Inspector of War Assets for Alberta and the Yukon Territories. Jack married Karin Wallensteen in 1946, and the couple had 6 children together: sons Herb and John, and daughters Karen, Shelley, Jodi and Julie-Ann. Jack served as a coach for the Banff Minor Hockey League for 46 years. Jack also took on several other positions within the Bow Valley community, including working as a volunteer with the Banff Figure Skating Club, a co-founder of the Banff Recreation Board, and a member of the Banff Advisory Council, the Banff Hospital Board and the Banff School Board.

Scope & Content:

Fonds consists of personal, professional and legal documents and photographs pertaining to Maud and Forest Kidney, Jack MacAulay, Kidney and Woodworth family members, friends and the Banff community. Items are organized by subject and date ranges.

Fonds consists of six series:

Series I - Maud (Woodworth) Kidney records: contains 3 sub-series [ A) 1894 - 1920, B) 1921 - 1950, C) 1951 - 1977 ]

Series II - Forest Kidney records: contains 3 sub-series [ A) 1889 - 1920, B) 1921 - 1950, C) 1951 - 1977 ]

Series II - Forest Kidney records. contains 3 sub-series [ A) 1889 - 1920, B) 1921 - 1950, C) 1951 - 2008 ]

Series III - Jack MacAulay records: contains 3 sub-series [A) 1920 - 1945, B) 1946 - 1980, C) 1981 - 2000 ]

Series IV - Family, friends and community records: contains 5 sub-series [ A) 1886 - 1920, B) 1921 - 1945, C) 1946 - 1970, D) 1970 - 2013, E) Maude Kidney Collection ]

Series V - Legal and business records : contains 3 sub-series [ A) 1894 - 1920, B) 1921 - 1950, C) 1951 - 1980 ]

Series VI - Collected materials

Series I content pertains to Maud Woodworth Kidney. Includes scrapbooks, photographs of Maud and her siblings and parents, trips to Calgary and local activities with family and friends, Maud working for the Alberta Hotel and the Banff Bottling Factory [ca. 1905 - 1915], and local clubs and societies which Maud was involved in between 1930 - 1977 including the Girls' Sunshine Flower Club, the Imperial Order of the Daughters of the Empire, the Senior Friends Club of Banff, Rebekah Lodge and the Order of the Eastern Star.

Series II content pertains to Forest Kidney during his World War I military service in Petawawa, Ontario; swimming with friends at the Cave and Basin and other social activities; travelling with family; local newspaper clippings noting Forest's achievements and community involvement; and Forest participating in events as a member of the Banff Shriners Club and the Canadian Restaurant Association.

Series III content pertains to Jack MacAulay at the Kidney family home with his twin brother, Ted; coaching for the Banff Minor Hockey League; participating in other community meetings and programs; personal, professional and medical correspondence [1940 - 1992]; Jack's wife, Karin MacAulay, and their children; and Jack's awards and achievements.

Series IV content pertains to extended family and friends of the Kidneys and the wider Banff community.

Includes sports and outdoor activities [including swimming, hiking, trail riding, camping, snowshoeing, skiing, and track and field]; early Banff [including businesses, Banff Elementary School and Banff High School, the Woodworth family residence, and construction of the Icefields Parkway]; family friends of the Woodworths and Kidneys [including the Brett family, the Stafford family and the Simpson family]; personal correspondence pertaining to Fred "Ty" Cobb (1931 - 1933); clubs and societies [including the Independent Order of Oddfellows, the Senior Friends Club, and the Order of the Eastern Star]; community events [including dances, meetings, dinners and award ceremonies]; weddings and anniversaries; a visit to Num-Ti-Jah Lodge in 1964; and biographical and genealogical information about Maud Kidney, Forest Kidney and the Woodworth family.

Series V content pertains to businesses owned and operated by the Kidney family [ca. 1930 - 1970], including Kidney Kabins, Quaker Coffee Shop and Pop's Bakery; mortgage agreements and property contracts; and government documents. Includes receipts, log books and financial records, photographs of Kidney Kabins and Quaker Coffee Shop, and receipts for land purchased by Forest Kidney, George Noble and others.

Series VI contains commercial postcards collected by the Kidney family. Postcards mostly produced by Byron Harmon, and some by G & W Fear and other photographers, and mostly pertain to Banff and the surrounding area [winter sports, wildlife, Banff Zoo, Banff Avenue, scenic views and mountain landscapes, etc].

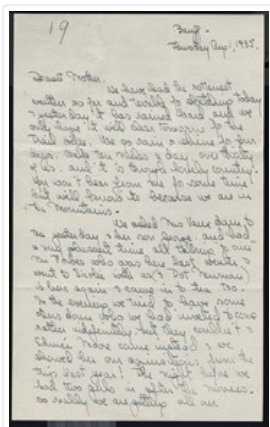
Notes:	<p>Contains duplicate photographs</p> <p>Duplicate commercial postcards have been kept in separate folder within file box containing other commercial postcards [V324 / IV / E / PG - 1 to 20 and V324 / VI / PG - 1 to 42]</p> <p>Sub-series IV / E : Maude Kidney Collection was donated with existing numbering system [Items 1 to 47] prior to processing; original order and corresponding annotations have been transferred to database entries from original handwritten notes</p>
Name Access:	<p>Cobb, Fred (Ty)</p> <p>Kidney, Forest H. (Pop)</p> <p>Kidney, Maude</p> <p>MacAulay, Jack</p> <p>MacAulay, Karin</p> <p>MacAulay, Ted</p> <p>MacAulay, Herb</p> <p>MacAulay, Julie-Ann</p> <p>Simpson, Jimmy, Sr.</p> <p>Simpson, Billie</p> <p>Woodworth, Adelia</p> <p>Woodworth, Annie</p> <p>Woodworth, Ben</p> <p>Woodworth, Benjamin Frederick</p> <p>Woodworth, Elizabeth</p> <p>Woodworth, Ethel</p> <p>Woodworth, Fred</p> <p>Woodworth, Percy</p> <p>Woodworth, Joe</p> <p>Woodworth, Maude</p> <p>Brett, Robert G.</p> <p>Harmon, Byron</p> <p>LaCasse, Annie</p> <p>LaCasse, Ulysses</p> <p>Canadian Restaurant Association</p>



Subject Access:	Businesses
	Property
	Family and personal life
	Imperial Order Daughters of the Empire
	Independent Order of Oddfellows
	Girls Flower Club Banff
	Rebekah Assembly Banff Lodge No. 34
	Quaker Coffee Shop
	Kidney Kabins
	Travel
	World War I
	Military
	Community events
	Club
	Sports
	Winter sports
	Landscapes
	Wildlife
	Num-Ti-Jah Lodge
	Banff Jasper Highway
	Banff High School
	Genealogy
Geographic Access:	Canada
	Alberta
	Banff
	Canmore
	Cave and Basin
	Bankhead
	Calgary
	Lake Louise
	Ontario
	Quebec
Access Restrictions:	British Columbia
	Some restriction/s on access
Reproduction Restrictions:	Copyright, privacy, commercial use and other restrictions may apply
	Copyright and other restrictions may apply
Language:	English
Finding Aid:	Finding aids and reference tools: basic description
Related Material:	Woodworth family fonds [M286 / V628]

Category:	Family and personal life Commerce and industry Environment Labour Land, settlement and immigration Law and justice Military Natural resources Sports, recreation and leisure
Biographical Source	Woodworth family fonds entry
Notes:	Most information based on contents of fonds
Title Source:	Title based on contents of fonds
Processing Status:	Processed

This material is presented as originally created; it may contain outdated cultural descriptions and potentially offensive content. [Read more.](#)



## Letters to Mother [April - November 1935]

<https://archives.whyte.org/en/permalink/descriptions7445>

Part Of:	Peter and Catharine Whyte fonds
Description Level:	5 / File
Fonds Number:	M36 / V683 / S37
Series:	I.A.2. Catharine Robb Whyte papers / photographs
Sous-Fonds:	M36
Accession Number:	.
Reference Code:	M36 / I / A / 2b / i / 98
GMD:	Private record
Date Range:	1935
Physical Description:	1 cm of textual records (70 pages ; 21.2 x 26.3 cm or smaller)
History /	
Biographical:	

See fonds level description.

#### Scope & Content:

File pertains to 44 hand-written letters written by Catharine Robb Whyte to her mother, Edith Morse Robb from August 1 to November 20, 1935. Topics include day to day life, visits from friends and visitors, weather, a trip to Lake O'Hara in early August following the annual Skyline Trail Hikers trip, photography and cameras, hiking/climbing, wildflowers, activities and people at camp, Pete's work on commission paintings/photography projects, events and people in Concord, trips to Bow Lake to paint, dinner and tea parties [both at home and around town], overnight camping trips to Lake Louise to paint, going to the movies and seeing friend's homemade films, going back to Lake O'Hara in early September to paint and hike, Russ and Kitty's travels and activities, day trips around the National Park [mostly to Lake Louise, Bow Lake and Moraine Lake] to paint/sketch, updates on what Pete and Catharine's friends are doing [mostly as it pertains to Skoki and Assiniboine Lodges], wildlife, an overnight trip to Calgary [and a visit to Morley on the way back] in early October, 3 young Doukhobor fugitives escaping police custody that resulted in a chase and shootout in Banff National Park [October 6 - 7] and the subsequent funerals, developing photos and print-making, politics [mostly pertaining to the provincial and federal elections], various holidays [both Canadian and American], skiing, matters pertaining to the Ski Club, and preparing to leave for a trip to Concord at the end of November.

#### Notes:

Please note: language pertaining to Indigenous Peoples used throughout is outdated and may be offensive.

A few letters written on lodge letterhead.

Most letters are marked with a small x in pencil, indicating where Jon Whyte made notes for use in his project "Catharine Robb Whyte, Peter Whyte: Commemorative Portfolio," originally published in 1981.

Some letters have numbers written in pencil in the upper margin of the first pages from an unknown project.

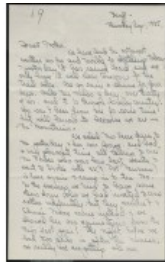
Name Access:	Whyte, Catharine
	Whyte, Peter
	Robb, Edith Morse
	Robb, Russell, Jr.
	Robb, Kitty
	Caird, Jean
	White, Annie
	White, David Mackintosh (Dave)
	White, Peter
	White, Clifford
	White, Jack (Dave White, Jr.)
	White, Clifford J., Sr.
	Whyte, Barbara
	White, Bubby
	Stockand, Cameron
	Stockand, Lila (White)
	Vaux, Mary
	Vaux, George, X
	Moore, Edmee
	Rungius, Carl
	Carter, Wilf
	Simpson, Billie
	Simpson, Jimmy, Sr.
	Mather, Allan
	Strom, Erling
	Strom, Sigrid
	Gest, Lillian
	Noble, George
	Link, George K. K. (Tommy)
	Link, Adeline
	Beil, Charlie
	McLean, George
	Walking Buffalo (George McLean)
	Campbell, Gray
	Watson, Sir Norman
Subject Access:	Activities
	Animals
	Art
	Artists
	Banff
	Banff Indian Days
	Banff Ski Club
	Banff Springs Hotel
	Bears
	Birthday

Businesses  
Camps  
Camping  
Children  
Climbing  
Community events  
Community life  
Correspondence  
Crime  
Family  
Family and personal life  
Films and film making  
First Nations  
Fishing  
Flowers  
Guides  
Guiding  
Home  
Horses  
Horseback riding  
Hiking  
Indigenous Peoples  
Lake O'Hara Lodge  
Leisure  
Moose  
Mountain  
Painting  
Personal and Family Life  
Photography  
Police  
Post Office  
Royal Canadian Mounted Police  
Scenery  
Ski areas  
Skiing  
Skoki Lodge  
Skyline Trail Hikers of the Canadian Rockies  
Skyline Hikers of the Canadian Rockies  
Swiss Guides  
Trains  
Transportation  
Travel  
Weather  
Wildlife  
Winter

## Winter sports

Geographic Access:	Banff
	Lake Louise
	Moraine Lake
	Bow Lake
	Banff National Park
	Lake O'Hara
	Yoho National Park
	Assiniboine
	Calgary
	Edmonton
	Alberta
	British Columbia
	Concord
	Massachusetts
	Canada
	United States of America
Language:	English
Creator:	Robb Whyte, Catharine
Title Source:	Title based on contents of file
Processing Status:	Processed

## Electronic Resources

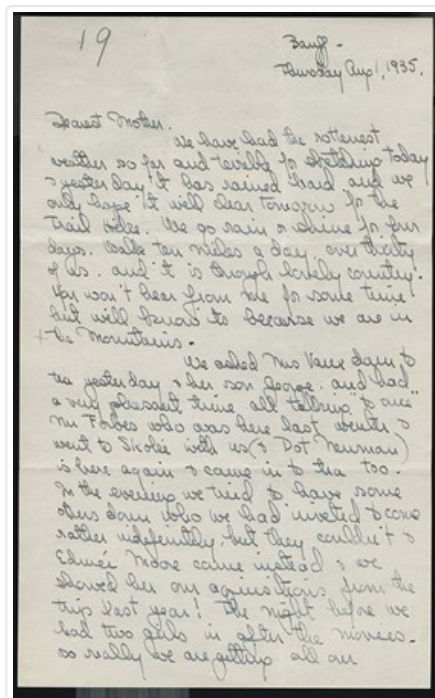


m36\_i\_a\_2b\_i\_98.pdf

 Read PDF

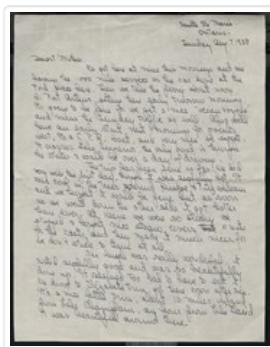
 Download PDF

## Images



OrderRemove

This material is presented as originally created; it may contain outdated cultural descriptions and potentially offensive content. [Read more.](#)



## Letters to Mother [August - December 1938]

<https://archives.whyte.org/en/permalink/descriptions7451>

Part Of:	Peter and Catharine Whyte fonds
Description Level:	5 / File
Fonds Number:	M36 / V683 / S37
Series:	IA.2. Catharine Robb Whyte papers / photographs
Sous-Fonds:	M36
Accession Number:	.
Reference Code:	M36 / I / A / 2b / i / 105
GMD:	Private record
Date Range:	1938
Physical Description:	2.5 cm of textual records (97 pages ; 21.4 x 27.5 cm or smaller)
History /	
Biographical:	

See fonds level description.

#### Scope & Content:

File pertains to 46 hand-written letters written by Catharine Robb Whyte to her mother, Edith Morse Robb from August 7 to December 29, 1938. Topics include returning from a trip to Concord and details about the route taken, cleaning and household chores, visits from friends and visitors, weather, a day trip on the new stretch of road between Bow Lake and the Saskatchewan River Crossing, trips to Lake O'Hara to paint and hike [also includes hiking the new trail Tom Link and Jimmy Simpson blazed to Linda Lake, named for Linda Castle of Honolulu], events and people in Concord, photography and cameras, day to day life, maintenance and upkeep of the house and property [mostly landscaping], descriptions of meals, painting/sketching, day trips to Lake Louise [mostly in September to paint], mentions of the threat of war in Europe, radio programs [mostly operas and the news, but also plays], slide-making, the start of construction on the Mount Temple Chalet, films and film making, Jack and Barbara starting construction on their new house, various holidays [both Canadian and American], errand trips to Calgary, wildlife [often in the yard], going to Victoria in early November to see Annie and Dave, day trips with Cliff to see the progress on Mount Temple Chalet, Christmas, and various other holiday-related activities, parties, and gifts.

#### Notes:

Please note: language pertaining to Indigenous Peoples used throughout is outdated and may be offensive.

Some letters are written on hotel/lodge letterhead.

Some letters are marked with a small x in pencil, indicating where Jon Whyte made notes for use in his project "Catharine Robb Whyte, Peter Whyte: Commemorative Portfolio," originally published in 1981.



Name Access:

- Whyte, Catharine
- Whyte, Peter
- Robb, Edith Morse
- Robb, Russell, Jr.
- White, Annie
- White, David Mackintosh (Dave)
- White, Peter
- White, Clifford
- White, Jack (Dave White, Jr.)
- White, Bubby
- White, Clifford J., Sr.
- Whyte, Barbara
- Stockand, Cameron
- Stockand, Lila (White)
- Ward, Sam
- Ward, Louise (Cis)
- Simpson, Jimmy, Sr.
- Simpson, Billie
- MacKenzie, Kate
- Strom, Erling
- Link, George K. K. (Tommy)
- Link, Adeline
- Noble, George
- Noble, Linda
- Vaux, George, X
- Vaux, Mary
- Moore, Phil
- Moore, Pearl
- Moore, Edmee

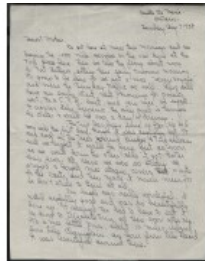
Subject Access:

- Activities
- Animals
- Art
- Artists
- Automobiles
- Banff
- Birds
- Birthday
- Books
- Businesses
- Cave and Basin
- Children
- Christmas
- Community events
- Community life
- Construction

Correspondence  
Family  
Family and personal life  
First Nations  
Home  
Hospital  
Hiking  
Indigenous Peoples  
Kodak  
Koachrome  
Lake O'Hara Lodge  
Larch trees  
Leisure  
Literature  
Mountain  
Mount Temple Chalet  
Norquay Ski Hill  
Painting  
Personal and Family Life  
Photography  
Post Office  
Scenery  
Ski areas  
Trains  
Transportation  
Travel  
Upper Hot Springs  
Weather  
Wildlife  
Winter  
Winter sports

Geographic Access:	Banff
	Lake Louise
	Lake Minnewanka
	Bow Lake
	Banff National Park
	Lake O'Hara
	Yoho National Park
	Vancouver
	Victoria
	Calgary
	Alberta
	British Columbia
	Concord
	Massachusetts
	Canada
	United States of America
Language:	English
Creator:	Robb Whyte, Catharine
Title Source:	Title based on contents of file
Processing Status:	Processed

## Electronic Resources

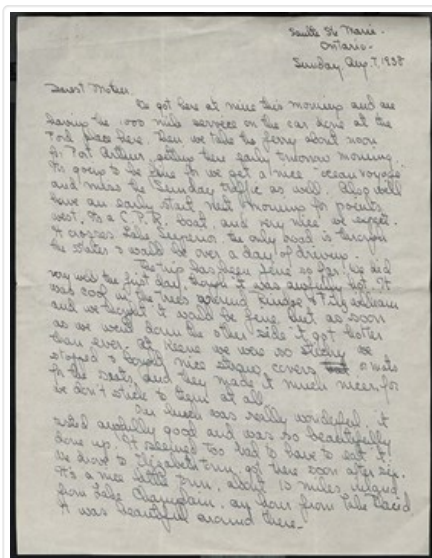


m36\_i\_a\_2b\_i\_105.pdf

 Read PDF

 Download PDF

## Images



OrderRemove

This material is presented as originally created; it may contain outdated cultural descriptions and potentially offensive content. Read more.

## Letters to Mother [August - December 1939]

<https://archives.whyte.org/en/permalink/descriptions7453>

Part Of: Peter and Catharine Whyte fonds

Description Level: 5 / File

Fonds Number: M36 / V683 / S37

Series: I.A.2. Catharine Robb Whyte papers / photographs

Sous-Fonds: M36

Accession Number: .

Reference Code: M36 / I / A / 2b / i / 107

GMD: Private record

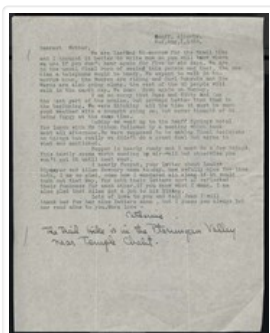
Date Range: 1939

Physical Description: 1.7 cm of textual records (93 pages ; 20 x 24.9 cm or smaller)

History /

Biographical:

See fonds level description.



#### Scope & Content:

File pertains to 56 letters written by Catharine Robb Whyte to her mother, Edith Morse Robb from August 1 to December 30, 1939. Topics include going on the annual Skyline Trail Hike to the Ptarmigan Valley in early August, day to day life, weather, painting/sketching [a mix of personal projects and commissions done both at home and out in the Park], visits from friends and visitors, slide making, photography and cameras [including colour photography], events and people in Concord, minor repairs/projects to the house and property [including installing a new water heater on the second floor], updates on Dave White's health, radio programs [mostly operas and the news], the declaration of war on Germany in early September [as well as details pertaining to local recruitment efforts and general preparations], day trips to Lake Louise, wildlife, descriptions of meals, Edith going to the 1939 World's Fair in New York City [September], construction on the new addition to the house throughout October [including a new furnace room, bathroom, and dark room on the ground floor, extending the studio on the second floor, and facing the side of the house in stone], cleaning and household chores, errand trips to Calgary, books Catharine and Edith are reading, a large blizzard at the end of October, birthdays, various holidays [both Canadian and American], attending first aid classes at the school, putting together the annual Christmas card, and various other Christmas activities and parties.

#### Notes:

Please note: language pertaining to Indigenous Peoples used throughout is outdated and may be offensive.

Letters are mostly typed, some hand-written. Many typed letters have hand-written notes and post scripts added throughout. All typed letters are written on a single side of paper, hand-written letters are mostly double-sided.

Some letters are marked with a small x in pencil, indicating where Jon Whyte made notes for use in his project "Catharine Robb Whyte, Peter Whyte: Commemorative Portfolio," originally published in 1981.

107-19 contains a sketch of a mushroom on the back of the first page.

107-36 contains a sketch of the Whyte compound and details of the new extension to Pete and Catharine's house.

Name Access:	Whyte, Catharine
	Whyte, Peter
	Robb, Edith Morse
	Robb, Russell, Jr.
	Robb, Kitty
	White, Annie
	White, David Mackintosh (Dave)
	White, Clifford
	White, Jack (Dave White, Jr.)
	White, Bubby
	White, Clifford J., Sr.
	Stockand, Cameron
	Stockand, Lila (White)
	Moore, Pearl
	Moore, Edmee
	Moore, Phil
	Simpson, Jimmy, Sr.
	Simpson, Billie
	Simpson, Jimmy, Jr.
	Simpson, Mary (Hallock)
	Simpson, Margaret
	Ward, Sam
	Ward, Louise (Cis)
	Rungius, Carl
	Noble, George
	Pocette, Mark
	Bagley, Frederick A.
	Watson, Sir Norman
	Vaux, Mary
	Reid, Charles
Subject Access:	Activities
	Animals
	Art
	Artists
	Automobiles
	Backcountry skiing
	Banff
	Banff Springs Hotel
	Birds
	Birthday
	Books
	Businesses
	Children
	Christmas
	Cinema

Community events  
Community life  
Construction  
Correspondence  
Family  
Family and personal life  
First Nations  
Home  
Hospital  
Hiking  
Indigenous Peoples  
Leisure  
Literature  
Mountain  
Mount Royal Hotel  
North West Mounted Police  
Num-Ti-Jah Lodge  
Painting  
Personal and Family Life  
Photography  
Post Office  
Royal Canadian Mounted Police  
RCMP  
Scenery  
Skyline Trail Hikers of the Canadian Rockies  
Skyline Hikers of the Canadian Rockies  
Trains  
Transportation  
Travel  
Tunnel Mountain  
War  
Weather  
Wildlife  
Winter  
World War II  
WWII  
World's Fair

Geographic Access: Banff  
Lake Louise  
Ptarmigan Valley  
Yoho National Park  
Banff National Park  
Calgary  
Alberta  
Concord  
Massachusetts  
Canada  
United States of America

Language: English

Creator: Robb Whyte, Catharine

Title Source: Title based on contents of file

Processing Status: Processed

## Electronic Resources

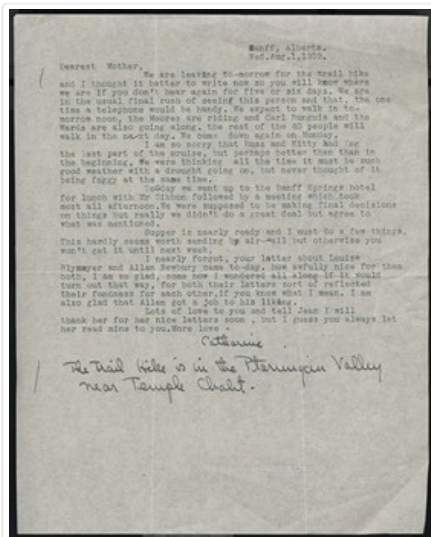


m36\_i\_a\_2b\_i\_107.pdf

 Read PDF

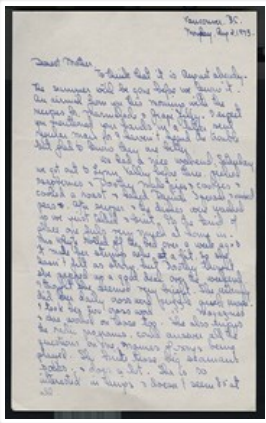
 Download PDF

## Images





This material is presented as originally created; it may contain outdated cultural descriptions and potentially offensive content. [Read more.](#)



## Letters to Mother [August - December 1943]

<https://archives.whyte.org/en/permalink/descriptions7462>

Part Of:	Peter and Catharine Whyte fonds
Description Level:	5 / File
Fonds Number:	M36 / V683 / S37
Series:	I.A.2. Catharine Robb Whyte papers / photographs
Sous-Fonds:	M36
Accession Number:	.
Reference Code:	M36 / I / A / 2b / i / 116
GMD:	Private record
Date Range:	1943

Physical Description: 1.9 cm of textual records (102 pages ; 21.4 x 27.5 cm or smaller)

History /

Biographical:

See fonds level description.

Scope & Content:

File pertains to 61 letters written by Catharine Robb Whyte to her mother, Edith Morse Robb from August 2 to December 27, 1943. Topics include Catharine's activities while Pete is posted in Vancouver, day to day life, news pertaining to the war, Pete's work as part of the RCAF, weather, military parades and concerts, going to the movies and live shows [mostly operas and the ballet], radio programs [including operas, news, sports, and a program called Quiz Kids], visits from friends, cleaning and household chores, moving back to Victoria in mid-August, painting/sketching, visiting various parks around Victoria, events and people in Concord, various holidays [both Canadian and American], Pete getting posted to Tofino in late August, details pertaining to the various modes of travel around Vancouver Island [5 hours by sailboat from Vancouver to Victoria; 2 days by train and boat from Victoria to Tofino], details on the different kinds of rations, Catharine spending September in Banff while Pete looks for a house in Tofino [time in Banff includes upkeep on the house, visiting Mount Temple Chalet, sketching, visits with friends, and Pete arriving for his 2-week leave], wildlife, moving to Tofino and getting settled [Pete worked at an Air Force base outside of town, but spent his nights at home with Catharine], walks on the beaches near town, new routines and friends, Christmas in Tofino, and travelling to Banff for New Years Eve.

Notes:	<p>Please note: language pertaining to Japanese people used throughout is outdated and may be offensive.</p> <p>Letters are mostly hand-written, some typed. Many typed letters have hand-written notes and post scripts added throughout. Some letters written on hotel letterhead.</p> <p>Some letters are marked with a small x in pencil, indicating where Jon Whyte made notes for use in his project "Catharine Robb Whyte, Peter Whyte: Commemorative Portfolio," originally published in 1981.</p> <p>A few letters have red numbers written at the top of the page from an unknown project.</p> <p>116-40 includes a sketch of the Tofino apartment floorplan.</p>
Name Access:	<p>Whyte, Catharine</p> <p>Whyte, Peter</p> <p>Robb, Edith Morse</p> <p>Moore, Pearl</p> <p>Moore, Edmee</p> <p>Moore, Phil</p> <p>Campbell, Gray</p> <p>Campbell, Eleanor</p> <p>Simpson, Jimmy, Sr.</p> <p>Simpson, Billie</p> <p>Simpson, Jimmy, Jr.</p> <p>White, Annie</p> <p>White, Jack (Dave White, Jr.)</p> <p>Stockand, Cameron</p> <p>Stockand, Lila (White)</p> <p>Whyte, Dorothy</p> <p>Ward, Sam</p> <p>Ward, Louise (Cis)</p> <p>Sinclair, Christine</p> <p>Jessen, Chris</p> <p>Morant, Nicholas (Nick)</p> <p>Morant, Willie</p> <p>Trono, Louis</p> <p>Rungius, Carl</p>
Subject Access:	<p>Activities</p> <p>Animals</p> <p>Art</p> <p>Artists</p> <p>Banff</p> <p>Beaches</p> <p>Birds</p> <p>Bird watching</p> <p>Birthday</p> <p>Boats</p> <p>Books</p> <p>Businesses</p>

Canadian Pacific Railway  
Children  
Community events  
Community life  
Correspondence  
Family  
Family and personal life  
First Nations  
Home  
Hospital  
Hotel Devonshire  
Hotel Sussex  
Indigenous Peoples  
Leisure  
Literature  
Mountain  
Mount Temple Chalet  
Painting  
Personal and Family Life  
Post Office  
Royal Canadian Airforce  
RCAF  
Scenery  
Trains  
Transportation  
Travel  
War  
War Artists  
Weather  
Wildlife  
Winter  
Winter sports  
World War II  
WWII

Geographic Access: Banff  
Lake Louise  
Banff National Park  
Calgary  
Alberta  
Victoria  
Vancouver  
Port Alberni  
Tofino  
British Columbia  
Concord  
Massachusetts  
Canada  
United States of America

Language: English

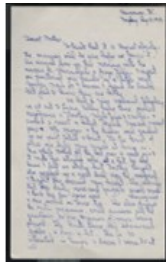
Creator: Robb Whyte, Catharine

Title Source: Title based on contents of file

Processing Status: Processed

## Electronic Resources

---



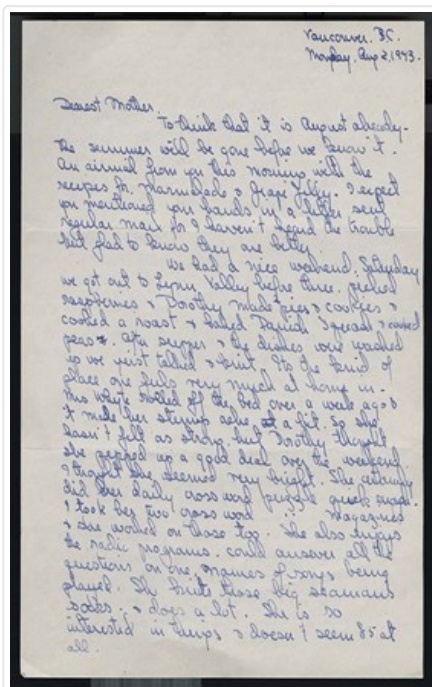
m36\_i\_a\_2b\_i\_116.pdf

 Read PDF

 Download PDF

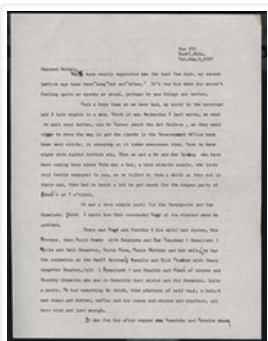
## Images

---



OrderRemove

This material is presented as originally created; it may contain outdated cultural descriptions and potentially offensive content. Read more.



## Letters to Mother [August - December 1957]

<https://archives.whyte.org/en/permalink/descriptions7487>

Part Of:	Peter and Catharine Whyte fonds
Description Level:	5 / File
Fonds Number:	M36 / V683 / S37
Series:	IA.2. Catharine Robb Whyte papers / photographs
Sous-Fonds:	M36
Accession Number:	.
Reference Code:	M36 / I / A / 2b / i / 141
GMD:	Postcard Private record
Date Range:	1957
Physical Description:	2.4 cm of textual records (128 pages ; 22.3 x 27.4 cm or smaller)
History / Biographical:	See fonds level description.

#### Scope & Content:

File pertains to 81 letters written by Catharine Robb Whyte to her mother, Edith Morse Robb from August 3 to December 29, 1957. Topics include day to day life, Banff events, visits from friends, painting, photography, wildlife, travel, camping, weather, events and people in Concord, radio programs [mostly news and hockey games], various holidays [both Canadian and American], seeing off Carl Rungius to New York, going to Edmonton for a cataract operation on Peter's right eye [August 23] - Catharine's time in Edmonton mostly consisted of sitting with Peter in the hospital, running errands in the city, and answering letters [she stayed at the Corona Hotel], starting construction of eventual Buffalo Block [consisting of three stores along Buffalo St. and a restaurant on the second floor], concerns regarding Edith's health, a visit to Concord from mid-October to mid-November [travelled by train], a second visit to Edmonton in December for Peter's eye, putting together their annual Christmas card, and other Christmas activities. Some letters are typed and some hand-written. Also includes one postcard.

#### Notes:

Please note: language pertaining to Indigenous Peoples used throughout is outdated and may be offensive.

Many typed letters have hand-written notes and post scripts added throughout.

Some letters are marked with a small x in pencil, indicating where Jon Whyte made notes for use in his project "Catharine Robb Whyte, Peter Whyte: Commemorative Portfolio," originally published in 1981.

#### Name Access:

Whyte, Catharine

Whyte, Peter

Robb, Edith Morse

Simpson, Jimmy, Sr.

Simpson, Billie

Morant, Nicholas (Nick)

Morant, Willie

Vallance, Sydney

Vallance, Doris

Kaquitts, Frank

Moore, Pearl

Beil, Charlie

Rungius, Carl

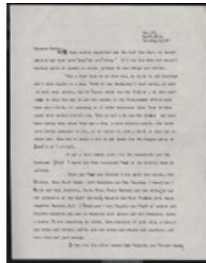
Phillips, Walter J.

Ward, Sam

Subject Access:	Activities
	Animals
	Art
	Artists
	Banff
	Banff Centre
	Banff School of Fine Arts
	Bird watching
	Birds
	Birthday
	Businesses
	Camping
	Canadian Pacific Railway
	Children
	Christmas
	Community events
	Community life
	Correspondence
	Deer
	Family
	Family and personal life
	First Nations
	Glenbow Foundation
	Home
	Indigenous Peoples
	Lake Louise
	Leisure
	Luxton Museum
	Moose
	Mountain
	Painting
	Personal and Family Life
	Post Office
	Scenery
	Stoney Nakoda
	Trains
	Trans-Canada Highway
	Travel
	Weather

Geographic Access:	Banff Lake Louise Bow Lake Banff National Park Morley Calgary Edmonton Alberta Concord Massachusetts Canada United States of America
Language:	English
Creator:	Robb Whyte, Catharine
Title Source:	Title based on contents of file.
Processing Status:	Processed

## Electronic Resources



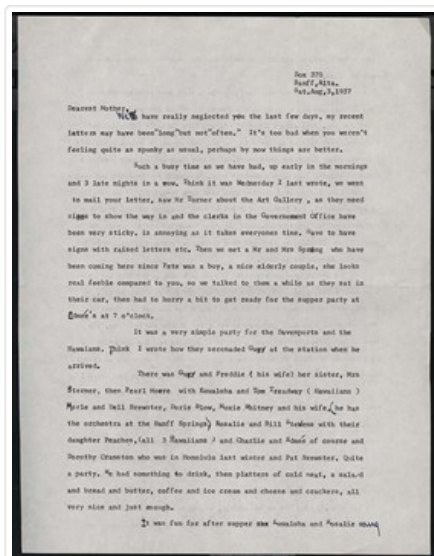
m36\_i\_a\_2b\_i\_141.pdf

 Read PDF

 Download PDF

## Images





OrderRemove

This material is presented as originally created; it may contain outdated cultural descriptions and potentially offensive content. [Read more.](#)



## Letters to Mother [August - December 1958]

<https://archives.whyte.org/en/permalink/descriptions7489>

Part Of:	Peter and Catharine Whyte fonds
Description Level:	5 / File
Fonds Number:	M36 / V683 / S37
Series:	IA.2. Catharine Robb Whyte papers / photographs
Sous-Fonds:	M36
Accession Number:	.
Reference Code:	M36 / I / A / 2b / i / 143
GMD:	Postcard
	Private record
Date Range:	1958
Physical Description:	1.8 cm of textual records (104 pages ; 22.3 x 27.4 cm or smaller)
History /	
Biographical:	
	See fonds level description.

#### Scope & Content:

File pertains to 67 letters written by Catharine Robb Whyte to her mother, Edith Morse Robb from August 5 to December 30, 1958. Topics include day to day life, Banff events, visits from friends, painting, photography, wildlife, travel, camping, weather, events and people in Concord, radio programs [mostly news and hockey games], various holidays [both Canadian and American], a road trip from north-eastern United States through Canada back to Banff in early August [written mostly on postcards], a trip to Lethbridge in late August, various construction projects [the new Sulphur Mountain gondola, the chimney and basement furnace of their house, and the Trans-Canada Highway], a trip to Concord in late November, and preparation of Christmas cards. Letters are mostly typed, some hand-written. Also includes postcards and a Christmas card.

#### Notes:

Please note: language pertaining to Indigenous Peoples used throughout is outdated and may be offensive.

Many typed letters have hand-written notes added throughout; many post scripts are hand-written.

Some letters are marked with a small x in pencil, indicating where Jon Whyte made notes for use in his project "Catharine Robb Whyte, Peter Whyte: Commemorative Portfolio," originally published in 1981.

143 - 39 includes a sketch of a shelving unit Catharine hoped to have installed in their bedroom.

143 - 64 is the 1958 Christmas card made by Catharine and Peter

#### Name Access:

Whyte, Catharine

Whyte, Peter

Robb, Edith Morse

Simpson, Jimmy, Sr.

Simpson, Billie

Morant, Nicholas (Nick)

Morant, Willie

Vallance, Sydney

Vallance, Doris

Browne, Belmore

Browne, Tibby

Phillips, Walter J.

Link, George K. K. (Tommy)

Link, George K.K.

Kaquitts, Frank

Feuz, Walter

Moore, Pearl

Twoyoungmen, Jacob

Beaver, Anna

Leighton, A. C.

Beil, Charlie

Subject Access:	Activities
	Animals
	Art
	Artists
	Banff
	Banff Centre
	Banff Indian Days
	Banff School of Fine Arts
	Banff Winter Carnival
	Bird watching
	Birds
	Birthday
	Businesses
	Calgary Stampede
	Camping
	Children
	Christmas
	Community events
	Community life
	Correspondence
	Deer
	Family
	Family and personal life
	First Nations
	Glenbow Foundation
	Home
	Indigenous Peoples
	Lake Louise
	Leisure
	Luxton Museum
	Moose
	Mountain
	Mountains
	Oldtimers
	Painting
	Personal and Family Life
	Post Office
	Scenery
	Stoney Nakoda
	Travel
	Weather

Geographic Access: Banff  
Lake Louise  
Moraine Lake  
Banff National Park  
Columbia Icefield  
Bow Lake  
Saskatchewan River  
Great Lakes  
Ontario  
Calgary  
Alberta  
Concord  
Massachusetts  
Canada  
United States of America

Language: English

Creator: Robb Whyte, Catharine

Title Source: Title based on contents of file

Processing Status: Processed

## Electronic Resources

---



m36\_i\_a\_2b\_i\_143.pdf

 Read PDF

 Download PDF

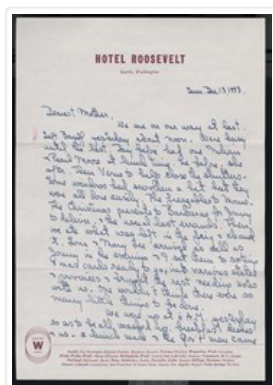
## Images

---



OrderRemove

This material is presented as originally created; it may contain outdated cultural descriptions and potentially offensive content. Read more.



## Letters to Mother [December 1953 - June 1954]

<https://archives.whyte.org/en/permalink/descriptions7480>

Part Of: Peter and Catharine Whyte fonds  
Description Level: 5 / File  
Fonds Number: M36 / V683 / S37  
Series: I.A.2. Catharine Robb Whyte papers / photographs  
Sous-Fonds: M36  
Accession Number: .  
Reference Code: M36 / I / A / 2b / i / 134  
GMD: Postcard  
Private record

Date Range: 1953-1954

Physical Description: 1.7 cm of textual records (114 pages ; 21 x 27 cm or smaller)

History /

Biographical:

See fonds level description.

Scope & Content:

File pertains to 55 letters written by Catharine Robb Whyte to her mother, Edith Morse Robb from December 13, 1953 to June 27, 1954. Topics include a trip to Hawaii from December to March [includes mainland travel between Banff and California by train and travel to and from Hawaii by boat], Christmas and New Years Eve activities, travelling around to different parts of the island, meeting with other vacationers from Banff, going straight to Edmonton [from California by train] to see Peter's doctor about new glasses, day to day life, Banff events, visits from friends, photography, weather, events and people in Concord, Peter's mother Annie being in the hospital, the deaths of Jean Caird in April and Belmore Browne in May, a second trip to Edmonton for Peter's eyes [during this trip he is admitted to the hospital for depression, possibly brought on by stress], Annie moving from Banff to Vancouver, and Peter receiving psychiatric treatment in Calgary. Also includes postcards.

Notes: Please note: language pertaining to Indigenous Peoples used throughout is outdated and may be offensive.  
Most letters hand-written, some typed. Many typed letters have hand-written notes and post scripts added throughout.  
Some letters are marked with a small x in pencil, indicating where Jon Whyte made notes for use in his project "Catharine Robb Whyte, Peter Whyte: Commemorative Portfolio," originally published in 1981.  
Many letters written during the Hawaii trip, as well as during stays in Calgary and Edmonton, are written on hotel letterheads.  
134 - 04 includes sketches of the location of the apartment they stay in in Honolulu and of the layout of their apartment.

Name Access:	Whyte, Catharine
	Whyte, Peter
	Robb, Edith Morse
	Ward, Sam
	Ward, Louise (Cis)
	Castle, Donald
	Moore, Pearl
	Noble, George
	Noble, Mary
	Simpson, Jimmy, Sr.
	Simpson, Billie
	White, Annie
	Whyte, Clifford
	Morant, Nicholas (Nick)
	Morant, Willie

Subject Access:	Activities
	Animals
	Art
	Artists
	Banff
	Banff Winter Carnival
	Birthday
	Businesses
	Camping
	Canadian Pacific Railway
	Children
	Christmas
	Community events
	Community life
	Correspondence
	Deer
	Family
	Family and personal life
	First Nations
	Funeral
	Home
	Hospital
	Indigenous Peoples
	Lake Louise
	Leisure
	Mountain
	Num-Ti-Jah Lodge
	Painting
	Personal and Family Life
	Post Office
	Scenery
	Stoney Nakoda
	Trains
	Trans-Canada Highway
	Travel
	Winter
	Weather

Geographic Access:	<p>Banff</p> <p>Lake Louise</p> <p>Bow Lake</p> <p>Banff National Park</p> <p>Calgary</p> <p>Edmonton</p> <p>Alberta</p> <p>Concord</p> <p>Massachusetts</p> <p>Washington</p> <p>California</p> <p>Honolulu</p> <p>Hawaii</p> <p>Canada</p> <p>United States of America</p>
Language:	English
Creator:	Robb Whyte, Catharine
Title Source:	Title based on contents of file.
Processing Status:	Processed

## Electronic Resources

---



m36\_i\_a\_2b\_i\_134.pdf

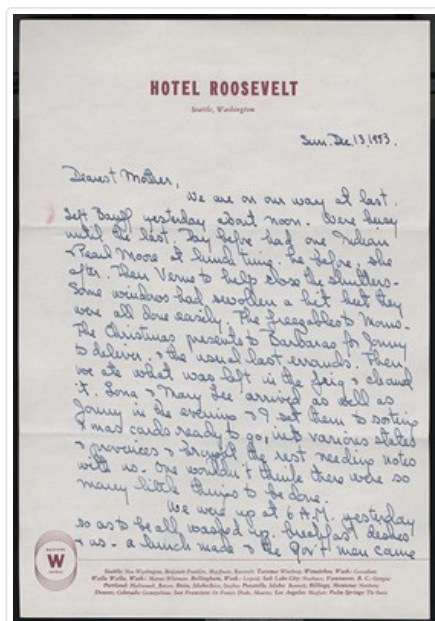
 Read PDF

 Download PDF

## Images

---





OrderRemove

This material is presented as originally created; it may contain outdated cultural descriptions and potentially offensive content. [Read more.](#)