



1st Week Life Drawings

<https://archives.whyte.org/en/permalink/artifactwyc.03.035>

Artist:	Catharine Robb Whyte, O. C. (1906 – 1979, Canadian)
Title:	1st Week Life Drawings
Date:	1926
Medium:	graphite on paper
Dimensions:	64.5 x 49.0 cm
Description:	life drawing female nude
Subject:	life drawing female nude
Credit:	Gift of Catharine Robb Whyte, O. C., Banff, 1979
Catalogue Number:	WyC.03.035

Images



This material is presented as originally created; it may contain outdated cultural descriptions and potentially offensive content. [Read more.](#)



6 minute sketch

<https://archives.whyte.org/en/permalink/artifactwyc.03.074>

Artist:	Catharine Robb Whyte, O. C. (1906 – 1979, Canadian)
Title:	6 minute sketch
Date:	1917
Medium:	coloured graphite on paper
Dimensions:	25.2 x 19.0 cm
Description:	four small pink flowers with large green leaves and brown stem
Subject:	pink flower 6 minute sketch
Credit:	Gift of Catharine Robb Whyte, O. C., Banff, 1979
Catalogue Number:	WyC.03.074

Images



This material is presented as originally created; it may contain outdated cultural descriptions and potentially offensive content. [Read more.](#)



10 Minute Sketch

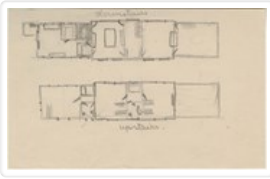
<https://archives.whyte.org/en/permalink/artifactwyc.03.072>

Artist: Catharine Robb Whyte, O. C. (1906 – 1979, Canadian)
 Title: 10 Minute Sketch
 Date: 1917
 Medium: coloured charcoal on paper (sand?)
 Dimensions: 39.0 x 21.0 cm
 Description: one pink flower with leaves in white outlined vase
 Subject: flower
 pink
 vase
 Credit: Gift of Catharine Robb Whyte, O. C., Banff, 1979
 Catalogue Number: WyC.03.072

Images



This material is presented as originally created; it may contain outdated cultural descriptions and potentially offensive content. [Read more.](#)

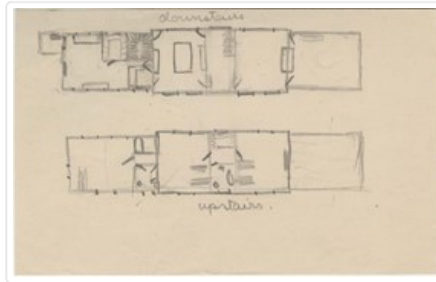


Downstairs Upstairs.

<https://archives.whyte.org/en/permalink/artifactwyc.03.301>

Artist:	Catharine Robb Whyte, O. C. (1906 – 1979, Canadian)
Title:	Downstairs Upstairs.
Date:	c. 1918
Medium:	graphite on paper
Dimensions:	10.0 x 16.5 cm
Description:	Interior drawing home. Perhaps Catharine's Boston childhood home
Subject:	interior home
Credit:	Gift of Catharine Robb Whyte, O. C., Banff, 1979
Catalogue Number:	WyC.03.301

Images



This material is presented as originally created; it may contain outdated cultural descriptions and potentially offensive content. [Read more.](#)



A Happy Easter.

<https://archives.whyte.org/en/permalink/artifactwyc.03.151>

Artist: Catharine Robb Whyte, O. C. (1906 – 1979, Canadian)

Title: A Happy Easter.

Date: 1913

Medium: coloured graphite on paper

Dimensions: 15.0 x 23.0 cm

Description: flowers, rabbits and ducks in a row

Subject: Easter

rabbit

duck

flower

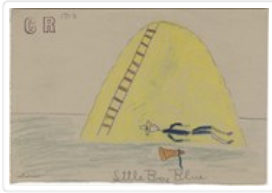
Credit: Gift of Catharine Robb Whyte, O. C., Banff, 1979

Catalogue Number: WYC.03.151

Images



This material is presented as originally created; it may contain outdated cultural descriptions and potentially offensive content. [Read more.](#)



Little Boy Blue

<https://archives.whyte.org/en/permalink/artifactwyc.03.099>

Artist:	Catharine Robb Whyte, O. C. (1906 – 1979, Canadian)
Title:	Little Boy Blue
Date:	1913
Medium:	coloured graphite on paper
Dimensions:	15.0 x 23.0 cm
Description:	blue stick figure with orange horn laying down in front of large haystack with ladder
Subject:	Little Boy Blue haystack
Credit:	Gift of Catharine Robb Whyte, O. C., Banff, 1979
Catalogue Number:	WYC.03.099

Images



This material is presented as originally created; it may contain outdated cultural descriptions and potentially offensive content. [Read more.](#)

Image
not
available

Minister, I'm Glad to See You!

<https://archives.whyte.org/en/permalink/artifactwyc.03.370>

Artist:	Catharine Robb Whyte, O. C. (1906 – 1979, Canadian)
Title:	Minister, I'm Glad to See You!
Date:	n.d.
Medium:	pastel on paper
Dimensions:	92.0 x 85.0 cm
Description:	A caricature-like pastel drawing of a man and a woman with "MINISTER, I'M GLAD TO SEE YOU!" written above them. The piece has been folded many times and is very delicate with quite a few rips throughout.
Credit:	Gift of Catharine Robb Whyte, O. C., Banff, 1979
Catalogue Number:	WyC.03.370

Images

Image
not
available

This material is presented as originally created; it may contain outdated cultural descriptions and potentially offensive content. [Read more.](#)



My Christmas Present

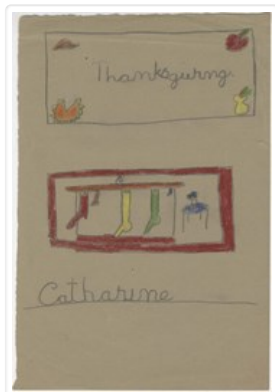
<https://archives.whyte.org/en/permalink/artifactwyc.03.222>

Artist:	Catharine Robb Whyte, O. C. (1906 – 1979, Canadian)
Title:	My Christmas Present
Date:	1913 – 1914
Medium:	graphite; watercolour on paper
Dimensions:	15.0 x 23.0 cm
Description:	watercolour set with blue, yellow, red, black and a green paint brush
Subject:	watercolour set
Credit:	Gift of Catharine Robb Whyte, O. C., Banff, 1979
Catalogue Number:	WYC.03.222

Images



This material is presented as originally created; it may contain outdated cultural descriptions and potentially offensive content. [Read more.](#)

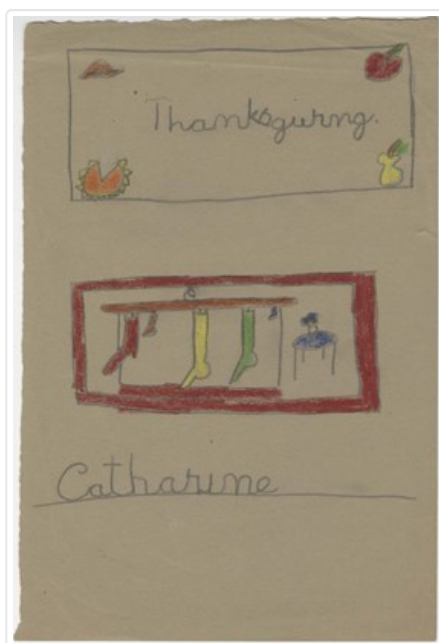


Thanksgiving

<https://archives.whyte.org/en/permalink/artifactwyc.03.165>

Artist:	Catharine Robb Whyte, O. C. (1906 – 1979, Canadian)
Title:	Thanksgiving
Date:	c. 1915
Medium:	graphite; wax pastel on paper
Dimensions:	22.5 x 15.0 cm
Description:	red border box containing 5 socks, red, brown, yellow, green, blue and one blue chair
Subject:	Thanksgiving socks
Credit:	Gift of Catharine Robb Whyte, O. C., Banff, 1979
Catalogue Number:	WYC.03.165

Images



This material is presented as originally created; it may contain outdated cultural descriptions and potentially offensive content. [Read more.](#)



Tofino Paintings

<https://archives.whyte.org/en/permalink/artifactwyc.03.234%20a-i>

Artist:	Catharine Robb Whyte, O. C. (1906 – 1979, Canadian)
Title:	Tofino Paintings
Date:	1943 – 1977
Medium:	graphite on paper

Dimensions:	24.2 x 30.3 cm
Description:	<p>a) A yellow envelope that has a red Ottawa, Canada stamp dated for April 25, 1977 in the TRC, in the TLC printed it says "Office of The Prime Minister Ottawa, Canada K1A 0A2 Cabinet du Premier Ministre". Tapped in the middle is the address it is being mailed to, it says "Tofino Paintings here (Banff) 1 of [sic: can't make out the work after of] Mrs. Catharine R. Whyte, P.O. Box 370, Banff, Alberta OFFICE OF THE PRIME MINISTER - CABINET DU PREMIER MINISTRE OTTAWA K1A 0A2". b) Sketch of a an inlet, there is a mountain to the right with some quick pencil marks to establish trees at the base and across the water near the right edge. There is also outlines for mist. Surrounding the sketch there are notes on the structure of the painting and what colours to use: "very misty, blue green about right, darker than in painting, mist behind trees, white, pale pink peach, peach - same value sky -, more orange, yellow green, white, fig, pinkish lavender hills, 4, 3, yellow, blue, pale, [sic can not make out] dark, pale yellow green blue & shy reflec., pink in stores, pale brown, 5, reflection, pink, wind pale blue, dark reflection, some pink, merges, darkest green, sky about right green in trees on island". c) Quick sketch of a mountain, trees and a body of water. Around the drawing there is notes on colour and structure for future paintings : "misty above, faint hits light lavender hue, orange light, fog flat bluish fog, green, dark, soft lavender blue reflection, reflect of trees lighter than trees, orange wind - pale yellowish no pink". d) A sketch of what appears to be a mountains landscape next to water. There is a printed inscription on the paper that says "Mail order Tofino, B.C. Nov. 24, 1943.". As well there is references to colour and structure to be used on an artwork later on: "bluer flecks of pale green pink, more pinkish lavender, patch pale green sky , soft sweet pea pink, bright pinkish yellow, blueish lavender, blueish green, dark green, dark green blue, pink reflection, blue, pinkish, redish [sic] brownish purple". Verso: another sketch of an inlet with a mountain, water and trees. Throughout the drawing it is filled with artist notes: "sweet pea cloud, soft edges, pale greenish stripe [sic] sky, sweet pea lavender, blue violet, deep pink, 2 darker blue green, 3 blackish green, steal blue, dark reflect, pink reflection, blue, pink, blueish greenish grey water wind, pinkish stripe , lavender, sand reddish brown". e) A drawing of trees on the edge of water. In the sketch there is artist notes that say: "pinkish orangish haze on hills, greenish sky, light blue, dark green, light blue". f) Sketch of trees on water. Around the drawing it says "sort of green relect, reflect of trees fades off, pinkist near edge, outs - [sic], dark where pebbles reflect sky are". g) Multiple sections of trees bordered by the ocean. Around the drawing there is artist notes: " paler sky - little orange in yellow, value trees about reflect, darker beach - little blue in white fog, light, light, dark, dark, wind whitish blue, [sic can not make out first word] reflect". h) Sketch of a mountain with clouds all around, and trees. Throughout the drawing it says "5, 7, 8, bluish grey white, lighter grey, 6, 4, greenish, darkest, 2, 3, 3, light silver, 9". i) Along top edge it says "Cold blue above, laven d [sic lavender] yellow greenish blue. robins egg - brilliant orange sunrise top part more pinkish blue -".</p>
Subject:	<p>beach, British Columbia</p> <p>water, ocean</p> <p>tree</p> <p>vegetation</p> <p>mountain</p>
Credit:	Gift of Catharine Robb Whyte, O. C., Banff, 1979

Images



This material is presented as originally created; it may contain outdated cultural descriptions and potentially offensive content. [Read more.](#)