



## Alpine Club of Canada fonds

<https://archives.whyte.org/en/permalink/descriptions92>

Part Of: Alpine Club of Canada fonds

Description Level: 1 / Fonds

Fonds Number: M 200  
S 6  
V 14

Sous-Fonds: M200  
S6  
V14

Accession Number: 698, 1040 (unproc), 1224, 1299 (unproc), 1807, 1813, 2141 (unproc), 2376 (unproc), 3160 (unproc), 3296 (unproc), 3298 (unproc), 3382 (unproc), 3560 (unproc), 3757 (unproc), 3970 (unproc), 5012, 5114, 5200, 5215 (unproc), 5330 (unproc), 5343, 5357, 5396 (unproc), 5438, 5454, 5455, 5456, 5457, 5458, 5459, 5460, 5461, 5462 (unproc), 5463 (unproc), 5464, 5465, 5466, 5474, 5538 (unproc), 5541, 5569 (unproc), 5591 (unproc), 5592, 5605, 5631 (unproc), 5632, 5633, 5634, 5635 (unproc), 5680 (unproc), 5724, 5950, 6062 (unproc), 6332, 6337, 6375, 6376 (unproc), 6396, 6437, 6451, 6457 (unproc), 6459 (unproc), 6465 (unproc), 6470 (unproc), 6623 (unproc), 6624, 6625, 6626, 6627 (unproc), 6628, 6765 (unproc), 6766 (unproc), 6767 (unproc), 7774 (unproc), 7779 (unproc), 8002 (unproc), 2021.32 (unproc)

Reference Code: M200 / S6 / V14

GMD: Motion picture  
Film  
Video  
Photograph  
Album  
Negative  
Photograph print  
Postcard  
Transparency  
Sound recording  
Cassette  
Textual record  
Organization record

Date Range: 1906-2017

Physical Description: ca.42 m of textual records. -- ca.12,500 photographs: prints, stereographic prints, transparencies, slides, negatives, postcards. -- 85 photograph albums. -- 8 motion pictures: films, video recordings. -- 3 sound recordings

## History /

### Biographical:

The Alpine Club of Canada, the national mountaineering club, was co-founded in 1906 by A. O. Wheeler and Elizabeth Parker, and other like-minded climbers. The club espoused scientific study and exploration, cultivation of art, public education, acquisition of climbing skills, and preservation of natural areas within the mountainous regions of Canada. Through a national executive, local sections and volunteer committees, the club provided climbing camps, clubhouse, huts, and publications, including the Canadian Alpine Journal. ACC expeditions and projects resulted in pioneer exploration, first ascents, and included mountain warfare training during the Second World War. In recent years, the club's membership has increased dramatically with the popularity of climbing and its programs have evolved to serve the needs of unguided climbers using sophisticated technical aids.

### Scope & Content:

Fonds constitutes the principal resource for the study of the history of Canadian mountaineering. It provides a wealth of information on individual alpinists, expeditions, mountains, national parks, conservation, climbing, alpine organizations, publications, guiding, scientific study and the Alpine Club itself.

The fonds consists of four Sous-fonds: I. Alpine Club of Canada records; II. Mount Everest Expedition (1982) records; III. Personal papers and photographs; IV. Other material. Club administration records (series I.A.) pertain to executive positions; head office; finance; camps, climbing and treks; expeditions; huts and properties; clubhouses; library; publications; photography; other committees; other activities; and other. Other club records include section records (series I.B.), hut registers and summit records (series I.C.).

Name Access:	Alpine Club of Canada
Subject Access:	Environment Exploration, discovery and travel Sports, recreation and leisure
Access Restrictions:	Some restriction/s on access Copyright, privacy, commercial use and other restrictions may apply
Language:	Language is English
Finding Aid:	Finding aids and reference tools: sous-fonds, series and sub-series description electronic finding aid for processed material
Creator:	Alpine Club of Canada
Category:	Environment Exploration, discovery and travel Sports, recreation and leisure
Title Source:	Title based on contents of fonds
Processing Status:	Processed / Unprocessed

This material is presented as originally created; it may contain outdated cultural descriptions and potentially offensive content. [Read more.](#)



## Archives General File collection

<https://archives.whyte.org/en/permalink/descriptions451>

Part Of: Archives General File Collection

Description Level:	1 / Fonds
Fonds Number:	M 8
	S 8
	V 8
Sous-Fonds:	M8 / S8 / V8
Accession Number:	Numerous. Access to material via accession number is available through the online database
Reference Code:	M8 / S8 / V8
GMD:	Motion picture Film Video Photograph Album Framed print Negative Photograph print Postcard Transparency Sound recording Cassette Reel to reel Textual record Diary Plan Private record Published record
Date Range:	[after 1890]
Physical Description:	57 cm textual records. -- 50 cm of photographs : prints. -- 189 photographs (15 framed prints, 51 transparencies, 79 negatives; 44 copy negatives). -- 3 photograph albums (139 prints). -- 6 motion pictures. -- 9 sound recordings
Scope & Content:	<p>The Archives General File is an artificial collection of accessions which do not constitute separate fonds or collections or cannot be placed within existing fonds or collections. Included in the collection are textual records of many types, such as manuscripts, reports, letters, diaries, speeches, poetry, plans and others; photographs in the form of prints, negatives, transparencies, albums, postcards, etc.; sound recorded interviews and programmes; and motion pictures. Material pertains broadly to the Banff area and many other areas within the Archives collecting mandate.</p> <p>Notable items include: Walter Wilcox letter; George Kinney report; interviews with Bill Round and Edward Feuz; original copy of Treaty Number Seven; Mary Schaffer material, including letters, notes, photograph and report; reports on the Nakimu Caves; film pertaining to Banff Winter Carnival; Georgia Engelhard letters and photos; plans for buildings and structures; George Noble photograph; W. S. Park photograph.</p>
Name Access:	Archives General File

Subject Access:	Exploration, discovery and travel Family and personal life First Nations Sports, recreation and leisure
Access Restrictions:	No restrictions on access Copyright, privacy, commercial use and other restrictions may apply
Language:	Language is English
Finding Aid:	Finding aids and reference tools: electronic database
Creator:	Whyte Museum of the Canadian Rockies
Category:	Exploration, discovery and travel Family and personal life First nations Sports, recreation and leisure
Title Source:	Title describes nature of collection. Individual titles in accession-level inventory have generally been assigned.
Processing Status:	Processed

This material is presented as originally created; it may contain outdated cultural descriptions and potentially offensive content. [Read more.](#)



## [Christmas Card and Photograph Album]

<https://archives.whyte.org/en/permalink/descriptions1868>

Part Of:	Lillian Gest fonds
Description Level:	5 / File
Fonds Number:	M67 / S36 / V225
Series:	II.C. Activities / photography
Sous-Fonds:	V225
Sub-Series:	ii.b. Photographic material / photograph album
Accession Number:	5142
Reference Code:	V225 / II / C / ii / b / PD - 12
GMD:	Album Photograph print Postcard
Date Range:	1949-1958
Physical Description:	1 album (173 prints : b&w and col. ; 25 x 22.5 cm or smaller)
History / Biographical:	See fonds level description

Scope & Content:

File pertains to a photograph album containing some photographs of various Alpine Club of Canada, American Alpine Club, Sky-Line Trail Hikers of the Canadian Rockies, and personal trips. Photographs primarily depict mountain views, buildings, lakes, and people, some of whom are identified.

The bulk of the album is dedicated to Christmas cards sent to Lillian Gest by various people from 1949-1958.

Inserts pertain to two photographs of a group of people sitting on the front porch of a cabin in Lake O'Hara. Ernest Feuz is seated far right.

Name Access:	Alpine Club of Canada Gest, Lillian Feuz, Ernest Whyte, Peter Whyte, Catharine
Subject Access:	Alpine Club of Canada Activities Buildings Camps Christmas Climbing Correspondence Exploration Family and personal life First Nations Glaciers Huts Horses Horse packing Indigenous Peoples Lake O'Hara region Mountains Mountaineering Mountain Goat Postcards Portrait Scenery Travel
Geographic Access:	Jasper National Park Banff National Park Yoho National Park Mount Assiniboine British Columbia Alberta Canada
Language:	English

Conservation: Rehoused with acid-free paper and flat string - flat string tied around book to hold pages together.

Creator: Gest, Lillian

Title Source: Title based on contents of file

Processing Status: Processed

## Electronic Resources

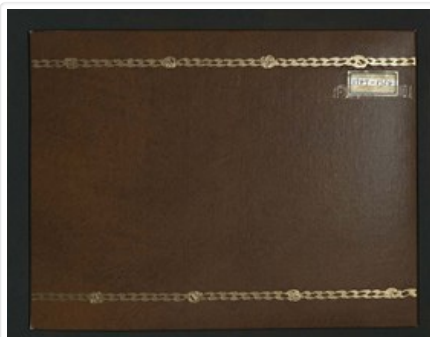


v225\_ii\_c\_ii\_b\_pd\_12.pdf

 Read PDF

 Download PDF

## Images



OrderRemove

This material is presented as originally created; it may contain outdated cultural descriptions and potentially offensive content. [Read more.](#)



## Dorothy Wardle fonds

<https://archives.whyte.org/en/permalink/descriptions398>

Part Of: Dorothy Wardle fonds

Description Level: 1 / Fonds

Fonds Number: M521

V75

Sous-Fonds: M521  
V75

Accession Number: 5296, 5391, 7504

Reference Code: M521 / V75

GMD: Photograph  
Album  
Negative  
Photograph print  
Postcard  
Transparency  
Textual record  
Private record  
Published record

Date Range: ca.1870-2002

Physical Description: 154 cm of textual records. -- 1304 photographs (1190 prints, 95 negatives, 19 transparencies). -- 6 photograph albums.

History /  
Biographical:

The Wardle family was comprised of husband and wife, James Morey Wardle (June 26, 1888 - May 18, 1971) and Maud Leette (Roney) Wardle (May 24, 1889 - December 1, 1969), and their one child, Dorothy Hope Wardle (May 23, 1919 - July 20, 2003).

James Wardle, born in Chiliwack, British Columbia, was a civil engineer and public servant. He was the Superintendent of Banff National Park from 1918-1921, Chief Engineer for Parks Canada from 1921-1935, and Deputy Minister of the Interior from 1935-1936. He is primarily known as a highway design engineer, particularly for building the Banff-Windermere, Banff-Lake Louise, and Banff-Jasper highways. He was a councillor for the Municipality of Rockcliffe Park in Ontario and he was the President of the Trail Riders of the Canadian Rockies in Banff from 1925-1929. Mount Wardle in Vermillion was named after him in 1921. James married Leette on November 4, 1913, with whom he had one child, Dorothy.

Born in Calgary, Alberta, Dorothy (also known as Dot and Dorie) grew up in Banff, Alberta and Ottawa, Ontario, due to her father's position with the federal government. She was educated at the Mountain School in Banff and at the Elmwood School in Ottawa. All three family members were graduates of Queen's University in Kingston, Ontario. James graduated in 1912 with a Bachelor of Science in Engineering, Leette graduated with a Bachelor's degree, and in 1942, Dorothy also earned a Bachelor's degree. Dorothy was prominent in student life and active in athletics. In 1941, Dorothy became the first woman elected as President of the Alma Mater Society and during her academic career, Dorothy was a member of the Levana Intercollegiate Debate, University Centenary Committee, and Queen's War Aid Commission.

Dorothy spent her career as a freelance writer however, upon graduation she served as the first Secretary-In-Charge of Records at Carleton College (now Carleton University) from 1942-1944 in Ottawa and in the mid-1950s worked as a secretary for the Glenbow Foundation in Calgary. Dorothy pursued a lifelong interest in traveling, art, and antiques. Although she was fiercely proud and protective of Banff and the Park, and remained a volunteer and patron of the Whyte Museum of the Canadian Rockies, Dorothy eventually settled in Sidney, British Columbia and shared an apartment with Sheila Iris Ritchie, with whom Dorothy travelled extensively. After her death in 2003, Dorothy, "Dorie," was laid to rest alongside her parents in the Old Banff Cemetery.

## Scope & Content:

Fonds consists of two sous-fonds: M521 and V75.

M521 consists of four series, 154 cm, ca.1870-2002. Series I: Dorothy Wardle Personal Papers, 69.5 cm, ca.1870-2002 (includes Dorothy's written work and research and notes related to Banff). Series II: Wardle Family, 32.5 cm, 1872-1998 (including correspondence with Carl Rungius and Mrs. Helen Brett, and Christmas and other greeting cards from Peter and Catharine Whyte). Series III: Queen's University, 7.5 cm, 1911-1980 (including graduation certificates for each family member and records pertaining to Dorothy's participation on the Alma Mater Society). Series IV: Travel, 44.5 cm, ca.1950-1988 (includes hand-written notebooks meticulously detailing their travels).

V75 consists of two series, 79.5 cm, ca. 1912-2001. Series I: Wardle Family, ca. 1912-1971, 6 albums, 31 cm of photograph prints and negatives (including family trips, trail rides in the Canadian Rocky Mountains, and family gatherings). Series II: Dorothy Wardle, 1972-2001, 34 cm of photograph prints, negatives, and transparencies (including Dorothy's travels in Alberta and British Columbia, overseas, and various outings with friends).

Name Access:	Wardle, Dorothy
	Wardle, James
	Rungius, Carl
	Brett, Helen
	Keyte, Freeman
	Hart, E. J. (Ted)
	Harkin, J. B. (James Bernard)
	Brewster, Pat
	Peyto, Bill
	Brett, Robert George
	Sanson, Norman
	White, Clifford
	Drummond-Davies, Nora
	Mills, Ike
	McLean, George
	Walking Buffalo (George McLean)
	Kaquitts, Frank
	Oxborough, Dorothy
	Whyte, Jon
	Robinson, Dean
	Warren, Mary Schaffer
	Simpson, George
	Gibbon, John Murray
	Whyte, Catharine
	Whyte, Peter
	Greenham, Margaret
Subject Access:	Arts
	Environment
	Personal and Family Life
	Banff
	Old Banff Cemetery
	Whyte Museum of the Canadian Rockies



Cabins  
Travel  
Picnics and picnicking  
Holidays  
Scenery  
Christmas  
Dogs  
Horses  
Mountain  
Canoes and canoeing  
Hiking  
Wildlife  
War Memorial  
Highland Games  
Bow River Bridge  
Golfing  
Anniversary  
Horseback riding  
Indigenous Peoples  
Stoney Nakoda  
Education  
Snowshoes and snowshoeing  
Banff Winter Carnival  
Banff Winter Festival  
Women  
Trails  
Trail Riders of the Canadian Rockies  
Sports and leisure  
Skiing  
European travel  
Beach  
Calgary Herald  
Geography  
Government  
Newspaper  
Politics  
Research  
Banff Public Library  
National parks and reserves  
Park policy  
Parks Canada  
Wardens  
Ya-Ha-Tinda Ranch  
Community life  
Mines and mineral resources

History  
Immigration and homesteading  
Settlement  
Organizations  
World War II  
Biographical  
Professional and Personal Life  
Grizzly Bears  
Fire fighters  
Sunshine Village  
Teahouses  
Banff Indian Days  
Regalia  
Calgary Stampede  
Mountain guides  
Mountain School  
The Albertan  
Crag and Canyon newspaper  
Homestead Hotel  
Banff Centre  
Hot Springs  
Superintendents  
Automobiles  
Natural history  
Records  
Calendar  
Finances  
Leases  
Legal and Financial  
Property  
Recreation

Geographic Access:

Banff  
Banff National Park  
Canmore  
Alberta  
Canada  
Canadian Rocky Mountains  
Castle Mountain  
Bankhead  
British Columbia  
Glacier National Park  
Kootenay National Park  
Silver City  
Victoria  
Scotland

Revelstoke  
Yoho National Park  
Ottawa  
Ontario  
Prince Edward Island  
Plain of Six Glaciers  
Lake Agnes  
Lake Louise  
Lake Minnewanka  
Lake O'Hara  
Bow River  
Calgary  
Sidney  
San Francisco  
United States  
Europe  
Germany  
Switzerland  
France  
Spain  
Monaco  
Italy  
Denmark  
Austria  
Quebec  
Windermere  
New York  
Assiniboine  
Ghost River  
High River  
Quebec City  
New Brunswick  
Maine  
Great Divide  
Moraine Lake  
Maligne Lake  
Columbia Icefield  
Washington  
Philadelphia  
Atlantic City  
Larch Valley  
Cascade Mountain  
Panama  
Sulphur Mountain  
Field

Emerald Lake  
Head Smashed In Buffalo Jump  
Takkakaw Falls  
Jasper National Park  
Athabasca Falls  
Okanagan  
Kananaskis  
Hoodoos  
Powell River  
Montreal

Access Restrictions: Some restriction/s on access  
Copyright, privacy, commercial use and other restrictions may apply

Language: Language is English

Related Material: Dorothy also donated artwork (by Carl Rungius) to Art and Heritage.  
James Morey Wardle fonds (Library and Archives Canada)

Creator: Wardle, Dorothy  
Wardle, James M.  
Wardle, Leette

Category: Arts  
Environment  
Education  
Exploration, discovery and travel  
Family and personal life  
First nations  
Sports, recreation and leisure

Title Source: Title based on accession records and contents of fonds

Processing Status: Processed

This material is presented as originally created; it may contain outdated cultural descriptions and potentially offensive content. [Read more.](#)



## Elizabeth Aleen Aked

<https://archives.whyte.org/en/permalink/descriptions628>

Part Of: Elizabeth Aleen Aked fonds

Description Level: 1 / Fonds

Fonds Number: V 74

Sous-Fonds: V74

Accession Number: 7850

Reference Code: V74

GMD: Photograph

Album

Photograph print

Postcard

Date Range: 1939

Physical Description: 1 photograph album: prints; b&w, postcards; col.

History /

Biographical:

Aleen Aked was born in England in 1907 and moved with her parents to Ontario in 1910. Aked attended the Ontario College of Art and completed her degree with honours in 1928. Aked travelled to Banff and Lake Louise with her parents in 1939 and documented her activities in a photograph album. Aked died in 2003.

Scope & Content:

Fonds consists of a photograph and memorabilia album documenting Aleen Aked's trip to the Rocky Mountains with her parents in 1939. Photographs and postcards include images of Stoney Nakoda at Morley and Banff Indian Days, Town of Banff, Banff National Park, Lake Louise, Lake Agnes, Aked and her parents.

Name Access: Aked, Elizabeth Aleen

Subject Access: Exploration, discovery and travel

Family and personal life

Sports, recreation and leisure

Access Restrictions: Other restrictions may apply

Language: Language is English

Creator: Aked, Elizabeth Aleen

Category: Exploration, discovery and travel

Family and personal life

Sports, recreation and leisure

Biographical Source The Cairn (Summer/Fall 2004), pp. 6, 9.

Notes:

Title Source: Title based on contents of fonds

Processing Status: Processed

This material is presented as originally created; it may contain outdated cultural descriptions and potentially offensive content. [Read more.](#)



## Elizabeth Aleen Aked Travel Album

<https://archives.whyte.org/en/permalink/descriptions54000>

Part Of: Elizabeth Aleen Aked fonds  
Description Level: 5 / File  
Fonds Number: V 74  
Sous-Fonds: V74  
Accession Number: 7850  
Reference Code: V74 / PD - 1  
GMD: Photograph  
Album  
Postcard  
Print  
Date Range: 1939  
Physical Description: 1 photograph album: 140 b&w prints; postcards; col.  
History /  
Biographical:

See fonds level description for biographical history.

### Scope & Content:

Album contains 140 b&w prints and colour postcards, tipped in. Photograph and memorabilia album documents Aleen Aked's trip to the Rocky Mountains with her parents in 1939. Photographs and postcards include images of Stoney Nakoda First Nations at Morley and Banff Indian Days, Town of Banff, Banff National Park, Lake Louise, Lake Agnes, Snowsqualmie Pass, Columbia River, Chukanut Drive (Washington), Puget Sound, Aked and her parents. Album also includes newspaper clippings and pamphlet pertaining to Banff Indian Days, pamphlets from Radium Hot Springs lodge and hot springs, and the Banff Springs Golf course pamphlet.

Name Access: Elizabeth Aleen Aked  
Subject Access: Exploration, discovery and travel  
Family and personal life  
Sports, recreation and leisure  
Access Restrictions: Other restrictions may apply  
Language: Language is English  
Creator: Aked, Elizabeth Aleen  
Category: Exploration, discovery and travel  
Family and personal life  
Sports, recreation and leisure  
Title Source: Title based on contents of file  
Processing Status: Processed

This material is presented as originally created; it may contain outdated cultural descriptions and potentially offensive content. [Read more.](#)

## Elizabeth Rummel fonds



<https://archives.whyte.org/en/permalink/descriptions30>

Part Of: Elizabeth Rummel fonds

Description Level: 1 / Fonds

Fonds Number: M 28  
S 9  
V 554

Sous-Fonds: M 28  
S 9  
V 554

Accession Number: 184, 540, 824, 962, 1159, 1189, 1341, 1379, 1615, 2103, 2569, 2661, 2818, 2836, 3349

Reference Code: M28 / S9 / V554

GMD: Photograph  
Album  
Negative  
Photograph print  
Postcard  
Transparency  
Sound recording  
Reel to reel  
Textual record  
Private record

Date Range: [ca.1897]-1980

Physical Description: 60 cm of textual records. -- ca.2200 photographs : prints, postcards, transparencies, negatives. -- 5 photograph albums (400 prints). -- 2 sound recordings : audio tape reels

#### History /

#### Biographical:

Elizabeth (Lizzie) Rummel, 1897-1980, was a lodge owner and operator at Banff National Park, Alberta and Mount Assiniboine Provincial Park, British Columbia, Canada. Rummel was born Elisabeth von Rummel to an aristocratic German family. With her mother and sisters, she ranched near Millarville, Alberta, after being stranded there during the First World War. In 1938, Lizzie moved to the mountains and became involved in early ski and backcountry operations. Her forty-two year career in the mountains included: working at Mount Assiniboine Lodge until 1942; managing Skoki Lodge and, at various times, Temple Chalet and Lake Louise Ski Lodge, ca.1943-1950; owning and operating Sunburst Lake Camp, 1950-1970; and working as assistant and oral history interviewer at the Archives of the Canadian Rockies (now the Archives of the Whyte Museum of the Canadian Rockies) from 1966 to 1980. Lizzie was active in the town affairs of Canmore, Alberta, where she lived, as well as in various conservation and recreation organizations. She became a member of the Order of Canada in 1980.

#### Scope & Content:

Fonds consist of papers and photographs pertaining to Lizzie Rummel, her career and her family.

Textual records consist mainly of correspondence, 1930-1980, mostly incoming. Also includes personal papers, 1902, 1926-1980, and records pertaining to Mount Assiniboine concerns, Skoki area, ski touring, Al Gaetz and Lawrence Grassi. Correspondents include Charlie Hunter, Ernest Lamarque and Erling Strom.

Photographs include four series: I. Professional and trips, 1903-1978, n.d., ca.1400 items; pertaining to Mount Assiniboine Camp and region, Sunburst Lake camp and region, Skoki Lodge and region, and trips and views in the Canadian Rockies and B.C., and including activities such as skiing, mountaineering and backcountry travel. II. Personal, ca.1898-1980, ca.485 items; pertaining to the Rummel Ranch, Rummel family and friends, Lizzie Rummel and friends and associates, other. III. Travels, 1936-1973, ca.145 items; pertaining to travels in Europe, Yukon and N.W.T. and other. IV. Other, 1912-1977, n.d., ca.140 items; pertaining to Indians, John Ware and other. Includes material by numerous photographers, including Arnold Brigden.

Sound recordings are Rummel reading in German and French from the guidebooks of Edward Feuz Jr. and Sr., 1969, and a practice tape by Rummel as an archives interviewer, 197-?

Name Access:	Rummel, Elizabeth
Subject Access:	Exploration, discovery and travel Family and personal life Sports, recreation and leisure
Access Restrictions:	No restrictions on access Copyright, privacy, commercial use and other restrictions may apply
Language:	Language is mainly English; some German and French
Finding Aid:	Finding aids and reference tools: arrangement outline and file description of photographs electronic finding aid correspondent/subject index microfilm copy of album/s
Creator:	Rummel, Elizabeth
Category:	Exploration, discovery and travel Family and personal life Sports, recreation and leisure
Title Source:	Title based on contents of fonds and accession records
Processing Status:	Processed

This material is presented as originally created; it may contain outdated cultural descriptions and potentially offensive content. [Read more.](#)



## Ernst Niederer fonds

<https://archives.whyte.org/en/permalink/descriptions661>

Part Of: Ernst Niederer fonds  
Description Level: 1 / Fonds



Fonds Number:	M 102 V 56
Sous-Fonds:	M 102 V 56
Accession Number:	7352 (unproc)
Reference Code:	M102 / V56
GMD:	Photograph Album Photograph print Postcard Textual record Private record Published record
Date Range:	1913-1956
Physical Description:	100 photographs: prints. -- 1 photograph album: ca.40 prints, ca.25 postcards. -- 6 cm textual records
History / Biographical:	Ernst Niederer, 1891-1978, was an alpine ski and climbing guide at Jasper, Banff, Columbia Icefield and Lake Louise, Alberta. Niederer was born in Teufen, Switzerland and came to Canada in 1920. He began guiding in 1928 and was certified in 1940. He retired to Victoria in 1951, but continued to ski and teach. Niederer was survived by his wife Ivy and son Ernie.
Scope & Content:	Fonds consists of photographs, 1913-1956 pertaining to climbing, guiding, backcountry skiing, and film-making of "Emperor Waltz", filmed in Jasper. Also included are personal photographs, 1935-1950. Photograph album pertains to farming, 1935 and includes ca.25 postcards re Jasper area and Europe, ca.1940 - ca.1950. Textual records include certificates, passports, and published articles, 1913-1956.
Name Access:	Niederer, Ernst
Subject Access:	Commerce and industry Environment Sports, recreation and leisure
Language:	Language is English
Finding Aid:	No finding aid
Creator:	Niederer, Ernst
Category:	Commerce and industry Environment Sports, recreation and leisure
Biographical Source Notes:	Accession record
Title Source:	Title based on contents of fonds
Processing Status:	Unprocessed

This material is presented as originally created; it may contain outdated cultural descriptions and potentially offensive content. [Read more.](#)



## Herbert E. Sampson fonds

<https://archives.whyte.org/en/permalink/descriptions340>

Part Of: Herbert E. Sampson fonds

Description Level: 1 / Fonds

Fonds Number: M 76  
V 174

Sous-Fonds: M 76  
V 174

Accession Number: 327, 496, 2287

Reference Code: M76 / V174

GMD: Photograph  
Album  
Photograph print  
Textual record  
Postcard  
Scrapbook

Date Range: 1911-1956

Physical Description: 5 photograph albums (ca.300 prints). -- 24 photographs : prints. -- 1 textual record

### History /

#### Biographical:

Herbert E. Sampson, 1871-1962, was a lawyer and mountaineer at Regina, Saskatchewan, Canada. Sampson was a life member of the Alpine Club of Canada, 1910, President, 1930-1932, and Honorary President, 1945. He attended all but six annual mountaineering camps between 1911 and 1956 and made over seventy-five ascents, including two first ascents.

#### Scope & Content:

Fonds consists of photograph albums, 1911-1956, a scrapbook, 1922-1939, and loose prints pertaining to Sampson's alpine career, Alpine Club of Canada camps, climbs, activities and mountaineering in general. Scrapbook includes a postcard from Gustave A. Gambs re Mount Robson.

Name Access: Sampson, Herbert E.

Subject Access: Exploration, discovery and travel  
Family and personal life  
Sports, recreation and leisure

Access Restrictions: No restrictions on access  
Copyright, privacy, commercial use and other restrictions may apply

Language: Language is English

Finding Aid: Finding aids and reference tools: basic description

Creator: Sampson, Herbert E.

Category: Exploration, discovery and travel  
Family and personal life  
Sports, recreation and leisure

Title Source: Title based on contents of fonds

Processing Status: Processed



## John Amatt fonds

<https://archives.whyte.org/en/permalink/descriptions54114>

Part Of:	John Amatt fonds
Description Level:	1 / Fonds
Fonds Number:	M563 / V788 / S57
Sous-Fonds:	M563 / V788 / S57
Accession Number:	2017.8659
Reference Code:	M563 / V788 / S57
GMD:	Motion picture Recording disc Video Photograph Album Framed print Negative Photograph print Postcard Sound recording Cassette Reel to reel Textual record Diary Map Private record Published record Scrapbook
Date Range:	1981 - 1986
Physical Description:	48 cm of textual records; 1 portfolio ; collected materials ; oversize 46 photographs : 38 prints ; b&w, 8 prints ; colour, 47 negatives ; b&w, 1 transparency ; colour, 1 album (42 photographs ; colour) 4 film reels ; 16 mm 2 videocassettes ; Ampex 7 videocassettes 10 DVDs 1 audio reel ; master 1 audio cassette

History /

Biographical:

John Amatt (May 19, 1945 - ) was an educator, expedition leader, public speaker, and founder of One Step Beyond WorldWide. He was a climber, business manager, spokesman and press liason for the 1982 Canadian Mount Everest Expedition.

Scope & Content:

Fonds include three sous-fonds related to the 1982 Canadian Mount Everest Expedition :

M563 - Textual;

V788- Visual;

S57 - Sound

M563 contains ten series:

A. Manuals

B. Contracts

C. Diaries

D. Maps

E. Reports

F. Correspondence

G. Periodicals

H. Clippings

I. Collected Materials O.S.

J. Scrapbooks

V788 contains six series:

A. Photographs

B. Negatives

C. Transparencies

D. Films

E. Albums

F. Framed

S57 contains two series:

A. Audio cassettes

B. Audio reel

Notes:

There are artefacts in the heritage collection associated with this fonds - logos and pins

Name Access:

Amatt, John

Everest '82

Subject Access:	Alpine Club of Canada Avalanches Calgary Camps Canada Climbing Communications Conferences and conventions Daily routines Education Winter Sports Helicopters India Mountaineering Mountaineers Newspaper clippings Organizations Sports Transportation Travel
Geographic Access:	Alberta Bangkok Thailand Kathmandu England London Nepal
Access Restrictions:	Some personal mailing addresses in M563/F - Correspondence
Language:	English
Related Material:	Peter Spear fonds
Creator:	John Amatt
Category:	Exploration, discovery and travel Science and technology Transportation
Biographical Source	<a href="http://www.adventureattitude.com/bio.htm">http://www.adventureattitude.com/bio.htm</a>
Notes:	
Title Source:	Title based on contents
Processing Status:	Processed

This material is presented as originally created; it may contain outdated cultural descriptions and potentially offensive content. [Read more.](#)