



1723 Copy of 'A Life of Mahomet' Possibly Morant's (?) and Japanese Stamp Collection

<https://archives.whyte.org/en/permalink/descriptions54220>

Part Of: Nicholas Morant fonds

Description Level: 5 / File

Fonds Number: M300 / V500 / S20

Sous-Fonds: M300

Sub-Series: M300 / III / D / 5 : Personal Interest and Gifts

Accession Number: Unknown

Reference Code: M300 / III / D / 5 / 91 and 95

GMD: Textual record
Private record
Published record

Responsibility: Nicholas Morant (?), Nicholas Morant

Date Range: 1723
[ca. 1900 - ca. 1920]
[ca. 1920 - ca. 1940]
[ca. 1940 - ca. 1960]

Physical Description: 2 books (1 published, 1 stamp book)

History /

Biographical:

Humphrey Prideaux (1648-1724) was born in Cornwall and eventually became a Doctor of Divinity. Prideaux was an author of multiple textual works pertaining to faith and particularly Christianity. He was the Dean of Norwich from 1702 until his death in 1724.

Scope & Content:

File consists of 2 books; one 18th century, one 20th century stamp book. Includes 1723 copy of 'A Life of Mahomet' by Humphrey Prideaux; missing front/back covers, replaced with plain brown paper covers. Handwritten title 'Mahomet' written on front cover and side binding in different handwritings; front believed to be by Nicholas Morant (?), side unknown. Also includes book of Japanese stamps collected by Nicholas Morant; many not dated, various designs and sizes, annotated on covers with Nicholas Morant's personal ink stamp.

Storage Range: In file box M300 / III / D / 5 / 75 to M300 / III / D / 5 / 91

Subject Access: Religion
Biography
Stamps
Postage

Geographic Access: England
Japan
Canada

Access Restrictions: Items in this file are not to be accessed or distributed without the explicit permission of their identified owner(s).

Reproduction Restrictions: Items in this file are not to be reproduced without the explicit permission of their identified owner(s).

Language: English

Conservation: 'Mahomet' book must be stored with protective barrier to prevent further damage (i.e. acid-free paper).

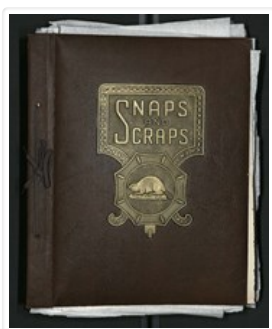
Creator: Humphrey Prideaux, Nicholas Morant

Biographical Source Notes: <https://www.ccel.org/ccel/prideaux>

Title Source: Title based on contents of file

Processing Status: Processed

This material is presented as originally created; it may contain outdated cultural descriptions and potentially offensive content. [Read more.](#)



[1940s and 1950s News Items Scrapbook]

<https://archives.whyte.org/en/permalink/descriptions22393>

Part Of: Luxton family fonds

Description Level: 5 / File

Fonds Number: LUX

Series: III / B / 4 : Georgina Luxton : Collected Material : Textual Records

Sous-Fonds: III : Luxton Family sous-fonds

Accession Number: LUX

Reference Code: LUX / III / B4 / 9

GMD: Textual record
Scrapbook

Date Range: 1945-1951

Physical Description: 5 cm of textual records (71 pages ; 30.5 x 38.5 cm)

History /

Biographical:

See fonds level description.

Scope & Content:

File consists of a scrapbook consisting of news-clippings, correspondence from the Post Office Department of Canada, pasted-in calendar prints with accompanying calendar for the year 1950, 1949 calendar, pasted-in prints of photographs appearing in Luxton archival collections - various sub-series; articles about the Duke of Windsor, Prince Edward, and his youth and adulthood; b&w prints of photographs of the Royal couple visiting an Indian Camp at Fort William; coverage of Queen Elizabeth's and Prince Phillip's wedding in The Tatler and Bystander and The Picture Post publications.

Name Access: Luxton, Eleanor

Subject Access:	Correspondence
	Calendar
	Royal tours
	Royal Visit
	Royalty
	Newspaper
	Family
	Family and personal life
	War
	World War II
Language:	English
Conservation:	Blank pages not scanned.
Creator:	Luxton, Eleanor
Title Source:	Title based on contents of file
Processing Status:	Processed

Electronic Resources

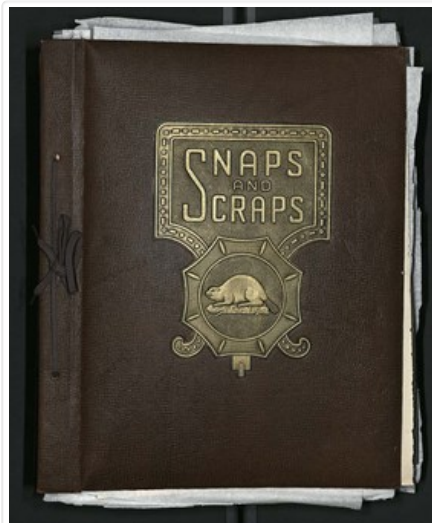


lux_iii_b4_9.pdf

 Read PDF

 Download PDF

Images



This material is presented as originally created; it may contain outdated cultural descriptions and potentially offensive content. [Read more.](#)



Banff Centre and Banff School of Fine Arts

<https://archives.whyte.org/en/permalink/descriptions54728>

Part Of: Luxton family fonds

Description Level: 5 / File

Fonds Number: LUX

Series: LUX / II / F : Collected material

Sous-Fonds: LUX / II : Eleanor Luxton sous-fonds

Sub-Series: LUX / II / F1 : Textual

Accession Number: LUX

Reference Code: LUX / II / F1 / 27

GMD: Textual record
Published record
Organization record

Date Range: 1938
[1940-1945]
1942
1953
1969
1975
1977-1978
1983
1985
[1985-1987]

Physical Description: 1.5 cm of textual records

Scope & Content:
File consists of programs, booklets and flyers pertaining to events and exhibitions hosted by the Banff Centre and the Banff School of Fine Arts. Includes flyers for a Canadian opera titled "Seabird", a pamphlet for the 50th anniversary celebration for the Banff School of Fine Arts, and a program for the 8th annual Banff Mountain Film Festival.

Name Access: Banff Centre for the Arts
Luxton, Eleanor

Subject Access:	Arts
	Artists
	Advertising
	Entertainment
	Events
	Community events
	Schools
	Education
	Performance
	Films and film making
Geographic Access:	Canada
	Alberta
	Banff
Reproduction Restrictions:	Restrictions may apply
Language:	English
Category:	Arts
	Education
Title Source:	Title based on contents of file
Processing Status:	Processed

This material is presented as originally created; it may contain outdated cultural descriptions and potentially offensive content. [Read more.](#)



Business, legal and financial records

<https://archives.whyte.org/en/permalink/descriptions22211>

Part Of:	Luxton family fonds
Description Level:	3 / Series
Fonds Number:	LUX
Series:	II.D. Business, Legal and Financial Series
Sous-Fonds:	II. Eleanor Luxton sous-fonds
Accession Number:	LUX
Reference Code:	LUX / II / D
GMD:	Textual record Photograph Print Negative
Date Range:	1903-1995
Physical Description:	4.8 m textual records -- oversize materials -- 31 photographs (15 prints, 16 negatives)
Scope & Content:	<p>Records in this series relate to Eleanor Luxton's business, legal and financial activities and consist of banking records; income tax returns; correspondence and invoices related to property and building construction, maintenance and management; household receipts; medical receipts; commercial and residential leases; insurance; investments; donations; rentals; legal papers relating to the estate of Annie McDougall and May Ross McDougall; mortgage papers; Parks Canada Lease agreements and need to reside challenge; Eleanor Luxton's living will.</p>
Notes:	Contents arranged by subject - see file level descriptions
Name Access:	Luxton, Eleanor
Subject Access:	Commerce and industry Finances Legal and Financial Property
Access Restrictions:	Restrictions may apply - contains private information
Reproduction Restrictions:	Restrictions may apply - contains private information
Language:	English
Category:	Commerce and industry Law and justice
Title Source:	Title based on contents of series
Processing Status:	Processed

This material is presented as originally created; it may contain outdated cultural descriptions and potentially offensive content. [Read more.](#)

Calgary Board of Trade



<https://archives.whyte.org/en/permalink/descriptions54707>

Part Of: Luxton family fonds

Description Level: 5 / File

Fonds Number: LUX

Series: LUX / II / C : Personal

Sous-Fonds: LUX / II : Eleanor Luxton sous-fonds

Sub-Series: LUX / II / C1 : Volunteer activities

Accession Number: LUX

Reference Code: LUX / II / C1 / 28

GMD: Textual record

Organization record

Date Range: 1929

1931-1941

1946-1950

Physical Description: 1.5 cm of textual records

History /

Biographical:

The Calgary Board of Trade, founded in 1890, was renamed the Calgary Chamber of Commerce in 1951.

Scope & Content:

File consists of one page of typed correspondence pertaining to the distribution of promotional map folders by members of the Calgary Board of Trade [1948], and 17 membership signs for the Calgary Board of Trade ranging from 1929 to 1950. All signs have original attached string for hanging/display purposes.

Notes: Membership signs in file have been arranged chronologically.

Name Access: Luxton, Eleanor

Subject Access: Calgary Board of Trade

Membership

Advertising

Businesses

Organizations

Geographic Access: Canada

Alberta

Calgary

Access Restrictions: Restrictions may apply

Reproduction Restrictions: Restrictions may apply

Restrictions:

Language: English

Conservation: Three membership signs had metal paperclips attached which have been removed due to risk of rust damage and staining

Related Material: LUX / II / C1 / 29

Category: Commerce and industry

Communications

Biographical Source Notes: <https://www.calgarychamber.com/about-us/history>

Notes:

Title Source: Title based on contents of file

This material is presented as originally created; it may contain outdated cultural descriptions and potentially offensive content. [Read more.](#)



Calgary Exhibition and Stampede

<https://archives.whyte.org/en/permalink/descriptions54716>

Part Of: Luxton family fonds

Description Level: 5 / File

Fonds Number: LUX

Series: LUX / II / F : Collected material

Sous-Fonds: LUX / II : Eleanor Luxton sous-fonds

Sub-Series: LUX / II / F1 : Textual

Accession Number: LUX

Reference Code: LUX / II / F1 / 22

GMD: Textual record
Published record
Postcard
Organization record

Date Range: 1912
[1920-1930]
1924-1925
1927-1933
1935
1939
1943-1946
[1945-1950]
1949
1951
1953
1955
1957-1959
1964
1972

Physical Description: 4 cm of textual records ; 6 cloth ribbons

Scope & Content:

File consists of published textual materials pertaining to Calgary Exhibition and Stampede events between 1912 and 1972. File includes cutout paper logos, books, brochures and pamphlets, "prize list and rules" booklets, informational content mailed to Eleanor Luxton [1928] empty branded Stampede envelopes, blank pages with Stampede letterhead, and 6 cloth ribbons labelled "Native Daughter", "Pioneer" and "Pioneer Son" [n.d.].

Notes:	File contains duplicates Some excess duplicates have been temporarily moved and may be de-accessioned in the future
Name Access:	Luxton, Norman Luxton, Eleanor
Subject Access:	Calgary Stampede Sports and recreation Souvenir Events Horses Horseback riding Hotel Anniversary Entertainment Advertising Parades
Geographic Access:	Canada Alberta Calgary
Reproduction Restrictions:	Restrictions may apply
Language:	English
Conservation:	One creased paper logo and all cloth ribbons from file have been placed in mylar sleeves
Category:	Sports, recreation and leisure Commerce and industry
Title Source:	Title based on contents of file
Processing Status:	Processed

This material is presented as originally created; it may contain outdated cultural descriptions and potentially offensive content. [Read more.](#)



Canadian Pacific souvenir menus

<https://archives.whyte.org/en/permalink/descriptions54721>

Part Of:	Luxton family fonds
Description Level:	5 / File
Fonds Number:	LUX
Series:	LUX / II / C : Personal material
Sous-Fonds:	LUX / II : Eleanor Luxton sous-fonds
Sub-Series:	LUX / II / C4 : Travel and hobbies
Accession Number:	LUX
Reference Code:	LUX / II / C4 / 14

GMD:	Textual record
	Published record
Responsibility:	Materials in file produced by Canadian Pacific
Date Range:	1924
	1926
	1928
	1939
	1941
	1945
	1952
	1957
	1969
Physical Description:	3 cm of textual records
Scope & Content:	<p>File consists of souvenir menus from various trips on Canadian Pacific Railway and Canadian Pacific cruises. Contents pertain to various destinations within Canada, including: Banff Springs Hotel and Banff National Park, Lake Louise, Calgary, Edmonton, Victoria, Vancouver, Connaught and Spiral Tunnels, Ottawa, Quebec, and St. John [New Brunswick]. Includes a set of 3 menus from 1924 and a set of 3 adult menus and 1 children's menu from 1952 which are stored in original Canadian Pacific paper envelopes.</p>
Notes:	Items in file are stored in two file folders, organized chronologically
Name Access:	Luxton, Eleanor
	Canadian Pacific Railway
Subject Access:	Advertising
	Travel
	Train
	Tourism
	Tourist information
	Banff Springs Hotel
	Hotel
	Commerce and industry
	Cruise ships
	Indigenous Peoples
	Government
	Landscapes

Geographic Access: Canada
 Alberta
 Banff
 Calgary
 Edmonton
 Lake Louise
 British Columbia
 Vancouver
 Victoria
 Quebec
 New Brunswick
 St. John

Access Restrictions: Restrictions may apply

Reproduction Restrictions: Restrictions may apply

Language: English

Category: Transportation
 Commerce and industry
 Exploration, discovery and travel
 Family and personal life
 Environment
 Cultural pluralism
 Government

Title Source: Title based on contents of file

Processing Status: Processed

This material is presented as originally created; it may contain outdated cultural descriptions and potentially offensive content. [Read more.](#)



Charity, educational and research organizations

<https://archives.whyte.org/en/permalink/descriptions54746>

Part Of: Luxton family fonds

Description Level: 5 / File

Fonds Number: LUX

Series: LUX / II / C : Personal

Sous-Fonds: LUX / II : Eleanor Luxton sous-fonds

Sub-Series: LUX / II / C1 : Volunteer activities

Accession Number: LUX

Reference Code: LUX / II / C1 / 32

GMD: Textual record
 Published record
 Organization record

Date Range:	[1920-1940]
	1939
	1945
	1950
	1956-1958
	1985
Physical Description:	1.2 cm of textual records (6 volumes ; 17.5 x 21 cm or smaller)
Scope & Content:	<p>File consists of 6 published pamphlets and booklets, and an undated "Red Cross Banff" paper logo. Content pertains to a Teacher's Association event in Calgary in 1939; the Calgary Society for the Prevention of Cruelty to Animals; a collection of transcribed letters sent to William McMurray of the Hudson's Bay Company which were read before the Historical and Scientific Society of Manitoba [1950]; a report by the Social Science Research Council of Canada; Alberta Blue Cross membership information; and a copy of "Pioneer Naturalists of the Rocky Mountains and the Selkirks" published for the Calgary Field Naturalists' Society with a note to Eleanor Luxton from author Beryl Hallworth.</p>
Name Access:	Luxton, Eleanor Hallworth, Beryl
Subject Access:	Education Research Events National parks and reserves Animals Charity Environment Government Personal and Professional Life Recreation
Geographic Access:	Canada Alberta Calgary Banff Edmonton Ontario Ottawa
Reproduction Restrictions:	Restrictions may apply
Language:	English
Category:	Education Environment Government Sports, recreation and leisure
Title Source:	Title based on contents of file
Processing Status:	Processed

This material is presented as originally created; it may contain outdated cultural descriptions and



Collected gift tags

<https://archives.whyte.org/en/permalink/descriptions55037>

Part Of: Luxton family fonds
Description Level: 5 / File
Fonds Number: LUX
Series: LUX / III / A : Family
Sous-Fonds: LUX / III : Luxton family sous-fonds
Sub-Series: LUX / III / A1 : Correspondence
Accession Number: LUX
Reference Code: LUX / III / A1 / 19
GMD: Textual record
Date Range: [1910-1990]
Physical Description: 1 cm of textual records

Scope & Content:

File consists of assorted tags from gifts sent to members of the Luxton family. Includes Christmas, birthday, and "thank you" gift tags, as well as tags which accompanied bouquets of flowers delivered to Eleanor Luxton. Some items are stored in small envelopes [possibly organized by Eleanor Luxton].

Name Access: Luxton, Eleanor
Luxton, Georgina
Luxton, Norman
Subject Access: Family and personal life
Holidays
Christmas
Correspondence
Geographic Access: Canada
Alberta
Banff
Language: English
Category: Family and personal life
Title Source: Title based on contents of file
Processing Status: Processed

This material is presented as originally created; it may contain outdated cultural descriptions and potentially offensive content. Read more.



Correspondence

<https://archives.whyte.org/en/permalink/descriptions17822>

Part Of: Luxton family fonds

Description Level: 3 / Series
Fonds Number: LUX
Series: LUX / II / A : Correspondence
Sous-Fonds: LUX / II : Eleanor Luxton sous-fonds
Accession Number: LUX
Reference Code: LUX / II / A
GMD: Textual record
Date Range: 1909-1995
Physical Description: 1.37 m of textual records

Scope & Content:

Series consists of cards, postcards, letters, and other correspondence which was sent to and/or collected by Eleanor Luxton. Content pertains to holiday and birthday greetings from family and friends, get well soon cards, collected gift tags, travel correspondence, and related subjects.

Notes: Series arrangement:
LUX / II / A / 1 to 47 : General correspondence, organized chronologically (see Content Details)
LUX / II / A / 48 to 51 : Holiday greeting cards, dated (chronological order)
LUX / II / A / 52 to 62 : Holiday greeting cards, not dated
LUX / II / A / 63 : Holiday gift tags
LUX / II / A / 64 to 65 : Thank you, friendship and get well soon cards
LUX / II / A / 66 to 67 : Easter and Valentine's Day cards
LUX / II / A / 68 to 70 : Birthday cards
LUX / II / A / 71 : Other holiday cards and letters
LUX / II / A / 72 : Postcards sent to Eleanor
LUX / II / A / 73 : Luxton family research correspondence

Name Access: Luxton, Eleanor

Subject Access: Family and personal life
Holidays
Correspondence

Access Restrictions: Access with permission. No reproduction

Language: English

Category: Family and personal life

Title Source: Title based on contents of files

Content Details: LIST OF FILES (LUX / II / A - 1 to 47) :

- * 1902 - 1920 (folder 1)
- * 1921 - 1930 (folder 2)
- * 1931 - 1935 (folder 3)
- * 1936 - 1940 (folder 4)
- * 1941 - 1948 (folder 5)
- * 1949 (folder 6)
- * 1950 (folders 7, 8)
- * 1951 - 1954 (folder 9)
- * 1955 - 1958 (folder 10)
- * 1959, 195- (folder 11)
- * 1960 - 1961 (folder 12)
- * 1952 - 1956 (folder 13)
- * 1967 - 1969 (folder 14)
- * 1970 - 1972 (folder 15)
- * 1973 (folder 16)
- * 1974 (folder 17)
- * 1975 (folder 18)
- * 1976 (folder 19)
- * 1977 (folder 20)
- * 1978 (folder 21)
- * 1979 (folder 22)
-
- * 197- (folder 23)
- * 1980 - 1981 (folder 24)
- * 1982 - 1983 (folder 25)
- * 1984 (folder 26)
- * 1985 (folders 27, 28)
- * 1986 (folder 29)
- * 1987 (folder 30)
- * 1988 (folders 31, 32)
- * 1989 (folders 33, 34)
- * 198- (folder 35)
- * 1990 (folder 36)
- * 1991 (folder 37)
- * 1992 (folders 38, 39)
- * 1993 (folders 40, 41)
- * 1994 (folder 42)
- * 1995 (folder 43)
- * 199- (folder 44)
- * undated (folder 45)
- * Christmas cards, undated (folder 46)
- * Cards, other, undated (folder 47)

Processing Status: Processed

This material is presented as originally created; it may contain outdated cultural descriptions and potentially offensive content. [Read more.](#)