



Jaeggi family fonds

<https://archives.whyte.org/en/permalink/descriptions225>

Part Of: Jaeggi family fonds

Description Level: 1 / Fonds

Fonds Number: M 185
V 303

Sous-Fonds: M 185
V 303

Accession Number: 1111, 2308, 6588

Reference Code: M185 / V303

GMD: Photograph
Album
Photograph print
Textual record
Private record
Published record

Date Range: [ca.1910]-1964

Physical Description: 3 cm of textual records. -- 26 photographs : prints. -- 1 photograph album (20 prints)

History /

Biographical:

John Jaeggi, 1899-1961, came to Canada in 1924 from Switzerland and worked in various capacities for the Alpine Club of Canada. He was an outfitter and hunting guide in British Columbia and bought a farm in the Columbia Valley in 1934. In 1940 Jaeggi built a log tea room on Sulphur Mountain in Banff. He was instrumental in the development of other tourist facilities on Sulphur Mountain, including a gondola lift completed in 1959. Edith Ashton Jaeggi, 1903-1986, was owner of the Upper Hot Springs Hotel and married John Jaeggi in 1949. Together, they renovated the hotel and served as its proprietors.

Scope & Content:

Fonds consists of John Jaeggi papers, 1927-1964, and Jaeggi family photographs, ca.1910-1955.

Textual records include a biography of John Jaeggi, n.d.; ephemera, 1927- 1964; and registers for Sulphur Mountain Chalet, 1945-1951. Ephemera includes brochures, menus, certificates, advertisements and articles re the Sulphur Mountain Chalet and Upper Hot Springs Hotel and the Jaeggi family.

Photographs pertain mainly to 1924 Mount Robson ACC camp and ascent of Mount Robson; mountaineering and outfitting, 1920s and 1930s; Upper Hot Spring Hotel, 1941-1951; and Sulphur Mountain Tea House.

Name Access: Jaeggi, John

Subject Access: Family and personal life

Access Restrictions: No restrictions on access
Copyright, privacy, commercial use and other restrictions may apply

Language: Language is English

Finding Aid: Finding aids and reference tools: basic description

Creator:	Jaeggi, John
Category:	Family and personal life
Title Source:	Title based on accession records and contents of fonds
Processing Status:	Processed

This material is presented as originally created; it may contain outdated cultural descriptions and potentially offensive content. [Read more.](#)

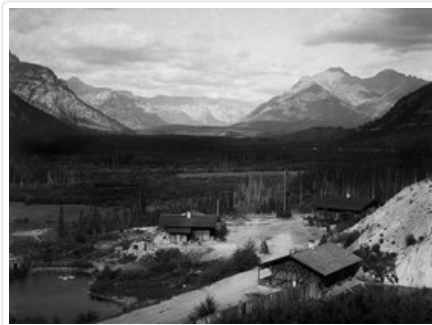


[Cave and Basin, Banff]

<https://archives.whyte.org/en/permalink/descriptions49899>

Part Of:	Jaeggi family fonds
Description Level:	6 / Item
Fonds Number:	V303
Reference Code:	v303 / 1 / a / na66 - 1835
GMD:	Photograph
	Negative, copy
Date Range:	ca. 1895
Physical Description:	1 photograph : negative : copy negative
Scope & Content:	
	Image of Cave and Basin National Historic Site, Banff, Alberta
Subject Access:	Buildings and memorials
	Commerce
	Discovery and Exploration
	Health services
	Industry
	Labour
	Politics and government
Geographic Access:	Alberta
	British Columbia
Creator:	S. J. Thompson
Title Source:	copy negative envelope

Images



OrderRemove

This material is presented as originally created; it may contain outdated cultural descriptions and potentially offensive content. [Read more.](#)