

Research Collections



1,000th ascent of Sulphur Mountain by Norman Sanson (front row left)

<https://archives.whyte.org/en/permalink/descriptions49976>

Part Of: Round family fonds
Description Level: 6 / Item
Fonds Number: V547
Reference Code: v547 / 10 / na66 - 1855
GMD: Photograph
Negative, copy
Photograph, print
Date Range: July 1, 1931
Physical Description: 1 photograph : negative : copy negative
Scope & Content:
Image of a group of people gathered for a photo at the weather station on Sulphur Mountain - man front row left identified as Norman Sanson
Subject Access: Buildings and memorials
Discovery and Exploration
Environment and Nature
Science and technology
Sports and Recreation
Geographic Access: Alberta
British Columbia
Title Source: copy negative envelope

Images



OrderRemove

This material is presented as originally created; it may contain outdated cultural descriptions and potentially offensive content. [Read more.](#)



#6- 1975

<https://archives.whyte.org/en/permalink/descriptions47198>

Part Of: Bruno Engler fonds
Description Level: 6 / Item
Fonds Number: V190
Series: IV. Warden collection
Sub-Series: IV.A.v. Warden exercises
Reference Code: V190 / IV. A.v. - 3 / NA - 27
GMD: Photograph
Negative
Date Range: 1975
Physical Description: 1 negative : 6 x 6 cm.; 1 of 2 images on filmstrip
Subject Access: Education
Environment and Nature
Science and technology
Geographic Access: Alberta
Access Restrictions: Access by appointment only
Creator: Bruno Engler
Title Source: Title taken from original negative envelope

Images



OrderRemove

This material is presented as originally created; it may contain outdated cultural descriptions and potentially offensive content. [Read more.](#)



#6- 1975

<https://archives.whyte.org/en/permalink/descriptions47199>

Part Of: Bruno Engler fonds
Description Level: 6 / Item
Fonds Number: V190
Series: IV. Warden collection
Sub-Series: IV.A.v. Warden exercises
Reference Code: V190 / IV. A.v. - 3 / NA - 28
GMD: Photograph
Negative
Date Range: 1975
Physical Description: 1 negative : 6 x 6 cm.; 1 of 2 images on filmstrip
Subject Access: Education
Environment and Nature
Science and technology
Geographic Access: Alberta
Access Restrictions: Access by appointment only
Creator: Bruno Engler
Title Source: Title taken from original negative envelope

Images



OrderRemove

This material is presented as originally created; it may contain outdated cultural descriptions and potentially offensive content. [Read more.](#)

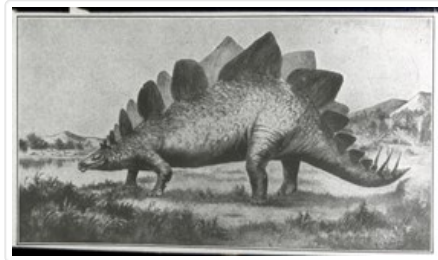


548. Historical Geography Fig. 512 Restoration of Stegosaurus (After F. A. Lucas)

<https://archives.whyte.org/en/permalink/descriptions38908>

Part Of: Mary Schaffer fonds
Description Level: 6 / Item
Series: II. Photography series
Sub-Series: A. Lantern slides 10. World travels
Reference Code: V527 / PS 1 - 954
GMD: Photograph
Lantern slide
Transparency
Date Range: [ca. 1908 - 192-]
Physical Description: 1 transparency : lantern slide
Subject Access: Science and technology
Education
Geographic Access: United States of America

Images



OrderRemove

This material is presented as originally created; it may contain outdated cultural descriptions and potentially offensive content. [Read more.](#)



Abbot Hut Abbot Pass Lake Louise

<https://archives.whyte.org/en/permalink/descriptions46682>

Part Of: Bruno Engler fonds
Description Level: 6 / Item
Fonds Number: V190
Series: IV. Warden collection
Sub-Series: IV.A.ii. Warden schools and training: Warden School Lake O'Hara Mt. Victoria
Reference Code: V190 / IV. A.ii. - 10 / NA - 02
GMD: Photograph
Negative
Date Range: 1970
Physical Description: 1 negative : 6 x 6 cm.
Subject Access: Education
Environment and Nature
Science and technology
Geographic Access: Alberta
Access Restrictions: Access by appointment only
Creator: Bruno Engler
Title Source: Title taken from original negative envelope

Images



OrderRemove

This material is presented as originally created; it may contain outdated cultural descriptions and potentially offensive content. [Read more.](#)



Abbots Hut Mt. Victoria

<https://archives.whyte.org/en/permalink/descriptions46713>

Part Of: Bruno Engler fonds
Description Level: 6 / Item
Fonds Number: V190
Series: IV. Warden collection
Sub-Series: IV.A.ii. Warden schools and training: Warden School Lake O'Hara Mt. Victoria
Reference Code: V190 / IV. A.ii. - 10 / PA - 02
GMD: Photograph
Photograph print
Date Range: 1970
Physical Description: 1 print : 12 x 17.5 cm.
Subject Access: Education
Environment and Nature
Science and technology
Geographic Access: Alberta
Access Restrictions: Access by appointment only
Creator: Bruno Engler
Title Source: Title taken from original envelope

Images



OrderRemove

This material is presented as originally created; it may contain outdated cultural descriptions and potentially offensive content. [Read more.](#)



Aerial photographs

<https://archives.whyte.org/en/permalink/descriptions56180>

Part Of: Douglas Leighton fonds
Description Level: 5 / File
Fonds Number: M133
V222
Series: V222 / IV : Scenic Views
Sous-Fonds: V222
Sub-Series: V222 / IV / A: Aerial Photographs
Accession Number: 2020.24
Reference Code: V222 / IV / A / 1
GMD: Photograph
Transparency
Date Range: 1995
Physical Description: 166 photographs : col. slides ; 35 mm
Scope & Content:

File consists of aerial photographs of terrain in British Columbia and Alberta. Includes locations such as Banff National Park and Yoho National Park with images of Glaciers, Lakes, Mountain ranges and tree lines.

Name Access: Leighton, Douglas
Subject Access: Photo Survey
Photography
Mountain
Lake O'hara
Geographic Access: Banff National Park
Yoho National Park
Lake O'Hara
Lake Louise
Canadian Rockies
Kootenay National Park
Assiniboine Provincial Park
Language: English
Creator: Douglas Leighton
Category: Environment
Sports, recreation and leisure
Science and technology
Title Source: Title based on contents of file
Processing Status: Processed

This material is presented as originally created; it may contain outdated cultural descriptions and potentially offensive content. [Read more.](#)



Aerial photographs

<https://archives.whyte.org/en/permalink/descriptions56181>

Part Of: Douglas Leighton fonds

Description Level: 5 / File

Fonds Number: M133
V222

Series: V222 / IV : Scenic Views

Sous-Fonds: V222

Sub-Series: V222 / IV / A: Aerial Photographs

Accession Number: 2020.24

Reference Code: V222 / IV / A / 2

GMD: Photograph
Transparency

Date Range: 1993
1996
1997
1987

Physical Description: 134 photographs : col. slides ; 35 mm

Scope & Content:
File consists of aerial photographs of terrain in British Columbia and Alberta. Including Banff National Park, Canmore, Kananaskis, Kootenay National Park and Jasper National Park. Images include glaciers, lakes, mountain ranges, forest, highways, and trails.

Name Access: Leighton, Douglas

Subject Access: Photo Survey
Photography
Mountain

Geographic Access: Banff National Park
Jumbo Mountain
Toby Creek
Kootenay National Park
Canmore, Alberta
Kananaskis
Canadian Rocky Mountains
Jasper National Park
Mt. Robson
Assininboine Provincial Park

Language: English

Creator: Douglas Leighton

Category: Environment
Sports, recreation and leisure
Science and technology

Title Source: Title based on contents of file

Processing Status: Processed

This material is presented as originally created; it may contain outdated cultural descriptions and potentially offensive content. [Read more.](#)



Aerial photographs

<https://archives.whyte.org/en/permalink/descriptions56182>

Part Of: Douglas Leighton fonds

Description Level: 5 / File

Fonds Number: M133
V222

Series: V222 / IV : Scenic Views

Sous-Fonds: V222

Sub-Series: V222 / IV / A: Aerial Photographs

Accession Number: 2020.24

Reference Code: V222 / IV / A / 3

GMD: Photograph
Transparency

Date Range: 1987
1988
1993
1994

Physical Description: 125 photographs : col. slides ; 35 mm

Scope & Content:
File consists of aerial photographs of terrain in British Columbia and Alberta. Includes photographs of Jasper National Park and Banff National Park. Images include glaciers, lakes, mountain ranges, forest, highways, and trails.

Name Access: Leighton, Douglas

Subject Access: Photo Survey
Photography
Mountain

Geographic Access: Banff National Park
Jasper National Park

Language: English

Creator: Douglas Leighton

Category: Environment
Sports, recreation and leisure
Science and technology

Title Source: Title based on contents of file

Processing Status: Processed

This material is presented as originally created; it may contain outdated cultural descriptions and potentially offensive content. [Read more.](#)



Aerial photographs

<https://archives.whyte.org/en/permalink/descriptions56183>

Part Of: Douglas Leighton fonds
Description Level: 5 / File
Fonds Number: M133
V222
Series: V222 / IV : Scenic Views
Sous-Fonds: V222
Sub-Series: V222 / IV / A: Aerial Photographs
Accession Number: 2020.24
Reference Code: V222 / IV / A / 4
GMD: Photograph
Transparency
Date Range: 1996
Physical Description: 187 photographs : col. slides ; 35 mm
Scope & Content:
File consists of aerial photographs of terrain in Banff National Park, Images include glaciers, lakes, mountain ranges, forest, highways, and trails.
Name Access: Leighton, Douglas
Subject Access: Photo Survey
Photography
Mountain
Geographic Access: Banff National Park
Language: English
Creator: Douglas Leighton
Category: Environment
Sports, recreation and leisure
Science and technology
Title Source: Title based on contents of file
Processing Status: Processed

This material is presented as originally created; it may contain outdated cultural descriptions and potentially offensive content. [Read more.](#)