



### Airdrie, Alberta

<https://archives.whyte.org/en/permalink/artifactlac.05.24>

Artist: Alfred Crocker Leighton, R. C. A. (1901 – 1965, Canadian)  
Title: Airdrie, Alberta  
Date: 1957  
Medium: watercolour on paper  
Dimensions: 22.8 x 27.8 cm  
Description: General colour: blue grey, brown, pink. Two elevators stand at the right side on the horizon. A train chugs past on the left. The foreround is brown fields - a fence appears from the left. The sky fills the upper two thirds and is spotted with clouds.  
Subject: architecture, rural  
landscape, prairie  
Credit: Gift of Peter and Judith Jekill, Calgary, 1973  
Catalogue Number: LaC.05.24

This material is presented as originally created; it may contain outdated cultural descriptions and potentially offensive content. [Read more.](#)



### Alberta, Saskatchewan

<https://archives.whyte.org/en/permalink/catalogue24580>

Publisher: Royal Canadian Geographical Society  
Published Date: 1964  
Scale: 32 miles (approx) to 1 inch  
Medium: Library - Maps and blueprints (unannotated; published)  
Map  
Subjects: Canada - Prairie Region  
Accession Number: 495  
Call Number: C11-6.2  
Collection: Archives Library

This material is presented as originally created; it may contain outdated cultural descriptions and potentially offensive content. [Read more.](#)



## Alberta, Saskatchewan, Manitoba

<https://archives.whyte.org/en/permalink/catalogue24575>

Publisher:	Dept. of Energy, Mines and Resources
Published Date:	1973
Scale:	2 inch - 32 miles
Medium:	Library - Maps and blueprints (unannotated; published) Map
Subjects:	Canada - Prairie Region
Accession Number:	700
Call Number:	C11-6.1
Collection:	Archives Library

This material is presented as originally created; it may contain outdated cultural descriptions and potentially offensive content. [Read more.](#)



## Antelope

<https://archives.whyte.org/en/permalink/artifactruc.04.12>

Artist:	Carl Clemens Moritz Rungius (1869 – 1959, American)
Title:	Antelope
Date:	1926
Medium:	etching on paper
Dimensions:	26.5 x 34.5 cm
Description:	Colour: black on white. Six antelope face right taking up the upper part of the picture. The lower half is bushes with a clear space in the lower right corner.
Subject:	landscape, prairie animal, antelope
Credit:	Gift of James (Mrs.) Brewster, Banff, 1968
Catalogue Number:	RuC.04.12

## Images



This material is presented as originally created; it may contain outdated cultural descriptions and potentially offensive content. [Read more.](#)



## Antelope

<https://archives.whyte.org/en/permalink/artifacthm.02.02>

Artist:	J. Monroe Thorington (1894 – 1989, American)
Title:	Antelope
Date:	n.d.
Medium:	oil on canvas board
Dimensions:	30.5 x 40.7 cm
Description:	General colour: green, yellow, brown, blue. An antelope stands at the left side facing right. There is grass and shrubs in the foreground which become part of a slope which fills the lower three quarters. At the horizon mountains can be seen. Sky above is blue.
Subject:	landscape, prairie animal, antelope
Credit:	Gift of J. Monroe Thorington, Philadelphia, USA, 1970
Catalogue Number:	ThM.02.02

This material is presented as originally created; it may contain outdated cultural descriptions and potentially offensive content. [Read more.](#)



## Balcony Evening

<https://archives.whyte.org/en/permalink/artifactsnj.04.35>

Artist:	John Harold Thomas Snow (1911 – 2004, Canadian)
Title:	Balcony Evening
Date:	1978
Medium:	coloured lithograph on paper
Dimensions:	40.5 x 45.7 cm
Description:	A bowl of yellow flowers sits on a yellow table centered foreground. A grey railing runs across entire foreground behind the table. A green field with flowers is seen through the railing. Layers of colours with the green field at ending at centre, are blue, red, yellow and grey sky.
Subject:	still life landscape prairie
Credit:	Gift of John Harold Thomas Snow, Calgary, 1995
Catalogue Number:	SnJ.04.35

This material is presented as originally created; it may contain outdated cultural descriptions and potentially offensive content. [Read more.](#)



## Buffalo Hunt

<https://archives.whyte.org/en/permalink/artifactlej.02.06>

Artist:	John Lefthand Jr.
Title:	Buffalo Hunt
Date:	1950 – 1970
Medium:	oil on canvas board
Dimensions:	23.0 x 30.0 cm
Description:	Two jumping bison, facing left are being chased by an man on a brown horse, he has a bow and arrow ready to shoot at the bison. The horizon runs across page just below centre line. The plain is brown, the sky is blue to the right and white/yellow the left half of picture.
Subject:	landscape, prairie animal, buffalo, horse figure, male hunting Indigenous
Credit:	Gift of Catharine Robb Whyte, O. C., Banff, 1979
Catalogue Number:	LeJ.02.06

### Images



This material is presented as originally created; it may contain outdated cultural descriptions and potentially offensive content. [Read more.](#)

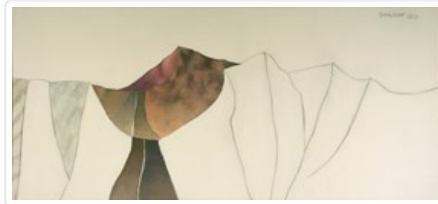


## Canada Classic: Mountain Muscle

<https://archives.whyte.org/en/permalink/artifactsir.05.10>

Artist:	Robert William Sinclair (1939 – , Canadian)
Title:	Canada Classic: Mountain Muscle
Date:	1980
Medium:	aquatec stain on raw cotton
Dimensions:	93.9 x 205.7 cm
Description:	Partially painted foothills landscape; bottom two thirds is a series of irregular vertical shapes indicating foothills; left of centre a road cuts through a valley disappearing over the horizon; reds and browns beside distant highway; 2 grey shapes at left of painting; top third is blank except for signature and date.
Subject:	landscape prairie
Credit:	Purchased from Wynick/Tuck Gallery, Toronto, 1990
Catalogue Number:	SiR.05.10

### Images



This material is presented as originally created; it may contain outdated cultural descriptions and potentially offensive content. [Read more.](#)



## Corner Mountain : Alberta's consummate shame

<https://archives.whyte.org/en/permalink/catalogue10349>

Author:	Pharis, Vivian
Physical Description:	p.5-6
Medium:	Library - Periodical
Subjects:	Prairie Bluff
Notes:	In Wilderness Alberta, vol.18, no.2, fall 1988
Call Number:	P
Collection:	Archives Library

This material is presented as originally created; it may contain outdated cultural descriptions and potentially offensive content. [Read more.](#)



## Forced Entry

<https://archives.whyte.org/en/permalink/artifactsir.05.02>

Artist: Robert William Sinclair (1939 – , Canadian)

Title: Forced Entry

Date: 1983

Medium: watercolour on paper

Dimensions: 60.4 x 45.5 cm

Description: Big sky scene with road through badlands; top 3/4 is sky, very delicately coloured, slight reddish tint at horizon off into yellow and a very slight blue tinge at the top; a brown road with a white stripe down the centre undulates through green topped badlands; b/c is white with pencil lines indicating side of mesa; the picture is outlined with pencil;

Subject: landscape  
prairie

Credit: Purchased from Wynick/Tuck Gallery, Toronto, 1990

Catalogue Number: SiR.05.02

## Images



This material is presented as originally created; it may contain outdated cultural descriptions and potentially offensive content. [Read more.](#)