



Banff : a cultural-historical study of land use and management in a national park community to 1945

<https://archives.whyte.org/en/permalink/catalogue4728>

Author: Scace, Robert C
Publisher: Calgary : Dept. of Geography, University of Calgary
Published Date: 1968
Physical Description: vii, 154p. : ill., maps
Medium: Library - Book (including soft-cover and pamphlets)
Series: Studies in land use history and landscape change. National park series, 2
Subjects: Mt. Rundle Campground
Orton, Dr (assistant to Dr. Brett)
Population
Predators
Streets
Tunnel Mountain Campground
Utilities
Notes: Bibliography
Accession Number: 407
22000
3069 deaccessioned
Call Number: 13.112 B22s
Collection: Archives Library

This material is presented as originally created; it may contain outdated cultural descriptions and potentially offensive content. [Read more.](#)



Dish

<https://archives.whyte.org/en/permalink/artifact104.20.1136>

Title:	Dish
Date:	1890 – 1920
Material:	ceramic
Dimensions:	2.4 x 14.2 x 20.4 cm
Description:	White oval dish with a band of sunflowers and waterlilies against a scalloped green background. In the centre of the decoration on one side there is an oval-shaped belt with "SANITARIUM HOTEL" on the belt and "BANFF" in the centre. The underside of the dish is marked with a crest and "PORCELAINE OPAQUE TRADE MARK BRIDGWOOD & SON. ENGLAND SUPPLIED BY W.O. REID & CO. LONDON & WINNIPEG."
Subject:	<div>institutions</div> <div>Banff Sanitarium</div> <div>Dr. Brett</div> <div>households</div> <div>souvenirs</div>
Credit:	Gift of Bertha Verkuil Davis, Calgary, 2003
Catalogue Number:	104.20.1136

Images



This material is presented as originally created; it may contain outdated cultural descriptions and potentially offensive content. [Read more.](#)



Footstool

<https://archives.whyte.org/en/permalink/artifact102.03.1001>

Title:	Footstool
Date:	1900 – 1935
Material:	skin; wood; metal
Dimensions:	13.0 x 27.5 x 27.5 cm
Description:	Dr. Brett's octagonal brown leather footstool, short brown leather covered stool with veneered walnut base and 4 round brass feet, padded leather with covered matching tacks and a 1.5 cm strip tojoin to the base, 8 sides, walnut, along bottom of each side are 3 small rectangles of inlaid walnut against a mahogany background,
Subject:	Dr. Brett households furniture
Credit:	Gift of Mr. and Mrs. Norman Tabuteau, Banff, 1966
Catalogue Number:	102.03.1001

Images



This material is presented as originally created; it may contain outdated cultural descriptions and potentially offensive content. [Read more.](#)



Loving Cup

<https://archives.whyte.org/en/permalink/artifact103.09.1003>

Title:	Loving Cup
Date:	1915
Material:	metal
Dimensions:	14.7 cm
Description:	Goblet type silver coloured golf trophy. Engraved on one side "1915 Banff Springs Golf Club Open Handicap Presented by F.L. Hutchinson"
Subject:	sports golf Banff Springs Golf Club Dr. Brett
Credit:	Gift of Mr. and Mrs. Norman Tabuteau, Banff, 1966
Catalogue Number:	103.09.1003

Images



This material is presented as originally created; it may contain outdated cultural descriptions and potentially offensive content. [Read more.](#)



Medicine Bag

<https://archives.whyte.org/en/permalink/artifact103.08.1071>

Title:	Medicine Bag
Date:	prior to 1935
Material:	skin ; metal
Dimensions:	23.0 x 18.0 x 40.0 cm
Description:	Black medical bag with brass closures and leather handle, painted on side, letters 3.1 high "L.H.B.", leather lining with leather pocket one side.
Subject:	Dr. Brett Louise Brett Helen Brett medicine
Credit:	Gift of Dick Keller, Banff, 1988
Catalogue Number:	103.08.1071

Images



This material is presented as originally created; it may contain outdated cultural descriptions and potentially offensive content. [Read more.](#)



Vase

<https://archives.whyte.org/en/permalink/artifact102.04.1002>

Title:	Vase
Date:	1890 – 1910
Material:	ceramic
Dimensions:	14.7 x 8.7 cm
Description:	Ex Banff Sanitarium, drainage holes in base, white china, wide red-purple band outlined with gold lines, stamped brown "Banff Sanitarium" crest (belt forming oval shape) on front, 5 cm drainage holes in base, very simple shape, lip gently flaring from wide neck and slightly bulbous belly, gold line around foot and lip
Subject:	Banff Sanitarium Dr. Brett
Credit:	Gift of Mr. and Mrs. Norman Tabuteau, Banff, 1966
Catalogue Number:	102.04.1002

Images



This material is presented as originally created; it may contain outdated cultural descriptions and potentially offensive content. [Read more.](#)



Vase

<https://archives.whyte.org/en/permalink/artifact102.04.1008>

Title: Vase

Date: 1890 – 1910

Material: ceramic

Dimensions: 12.2 cm

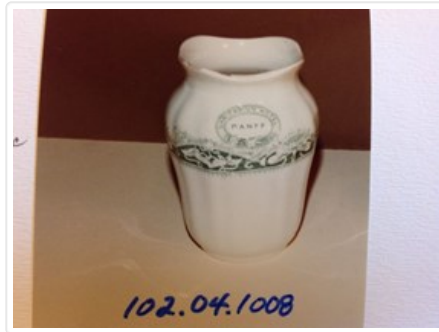
Description: white and green, ex Banff Sanitarium Hotel, white, band of sunflowers and waterlilies against scalloped green background, "Sanitarium Hotel/Banff" written in crest (belt in oval shape stamped on shoulder above band, small simple shape with slightly ribbed sides and high shoulders closing in to wide mouth and small undulating lip, trademark crest stamped on base noting it is "porcelain opaque"

Subject: institutions
Banff Sanitarium
Dr. Brett

Credit: Gift of Forrest (Pat) Oliver Brewster, Banff, 1966

Catalogue Number: 102.04.1008

Images



This material is presented as originally created; it may contain outdated cultural descriptions and potentially offensive content. [Read more.](#)