



And Scabbard Dagger

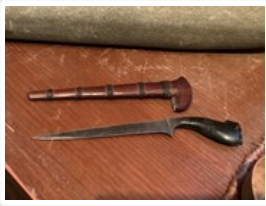
<https://archives.whyte.org/en/permalink/artifact104.05.0056%20a%2cb>

Title:	And Scabbard Dagger
Date:	1850 – 1920
Material:	wood; metal
Dimensions:	1.7 x 3.3 x 24.5 cm
Description:	<p>A long straight knife with fluted wooden handle and scabbard ornately trimmed with brass. (a) dagger, short, narrow, pointed, double edged steel blade with small, dark, fluted wooden handle. Blade guard, cast of brass with raised curlicue design, turns upward at sides, handle tip of cast brass with similar design and small lug with hole through at one side</p> <p>Note: blade guard loose; wooden handle cracked along length; blade pitted. (b) scabbard, narrow and straight, made of two pieces of wood held together by two rings of heavy cast brass with raised floral motifs, becoming oval medallions on one side with cast relief of dragon like figures. Cast brass bands at mouth and tip repeat dragon floral motif of other two bands and have floral motif cut through exposing pebbly stone inlay in wood. Brass ring near top with small brass loop on one side.</p>
Subject:	<p>warfare</p> <p>fighting</p> <p>animal</p> <p>dragon</p> <p>Japanese</p> <p>Edward S. Morse</p>
Credit:	Gift of Catharine Robb Whyte, O. C., Banff, 1979
Catalogue Number:	104.05.0056 a,b

Images



This material is presented as originally created; it may contain outdated cultural descriptions and potentially offensive content. [Read more.](#)



And Scabbard Dirk

<https://archives.whyte.org/en/permalink/artifact104.05.0057%20a%2cb>

Title:	And Scabbard Dirk
Date:	1875 – 1930
Material:	metal; wood; fibre
Dimensions:	2.1 x 1.0 x 15.0 cm
Description:	<p>A very thin knife with ebony handle like rifle butt and wooden scabbard wrapped with bands of black cord. (a) dirk, short, narrow, pointed steel blade with reverse curve to sharp shoulder on under side of hilt. Small carved ebony handle shaped like a rifle butt, with carved band of scallops and diamond shapes around middle. Two decorative notches carved across butt of handle. Note: handle checked along length. (b) scabbard, small, simple and straight, carved of two pieces of wood with triangular opening at mouth. Top carved to curve downward on one side to accommodate shoulder of blade. Girded with four double bands of finely braided cord, evenly spaced along length, and a fifth triple band at top beneath shoulder. Note: top fibre hands loose and slide up and down.</p>
Subject:	<p>warfare</p> <p>fighting</p> <p>Japanese</p> <p>Edward S. Morse</p>
Credit:	Gift of Catharine Robb Whyte, O. C., Banff, 1979
Catalogue Number:	104.05.0057 a,b

Images



This material is presented as originally created; it may contain outdated cultural descriptions and potentially offensive content. [Read more.](#)



And Scabbard Knife

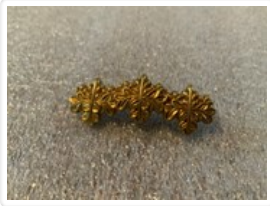
<https://archives.whyte.org/en/permalink/artifact104.05.0060%20a%2cb>

Title:	And Scabbard Knife
Date:	1850 – 1935
Material:	metal; shell; wood
Dimensions:	4.6 x 2.6 x 33.8 cm
Description:	<p>Knife with carved pistol grip handle and flame like carved piece at mouth of wooden scabbard. (a) knife, thin, curved, pointed steel blade with handle carved of greenish tortoiseshell ? shaped like a simple pistol grip. Deep single groove incised at each side at top near hilt. Blade joined to handle with roughly formed collar of grey metal. Note: hairline cracks in handle along grain, blade pitted and rusted. (b) scabbard, simple, slightly curved, wood with hoof like ebony tip. Band of tortoiseshell ? at opening carved in shape of flame or flowing leaf sticking out to one side. Round hole drilled through top, five thin lines incised across wood spaced evenly along length of scabbard. Small patches of glossy black material in a few places, and a black colour in the grain of the wood indicate that the wood may have been once enamelled black</p>
Subject:	<p>warfare</p> <p>fighting</p> <p>Japanese</p> <p>Edward S. Morse</p>
Credit:	Gift of Catharine Robb Whyte, O. C., Banff, 1979
Catalogue Number:	104.05.0060 a,b

Images



This material is presented as originally created; it may contain outdated cultural descriptions and potentially offensive content. [Read more.](#)



Bar Pin

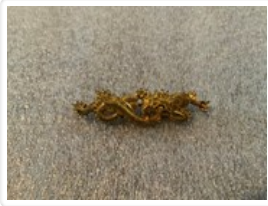
<https://archives.whyte.org/en/permalink/artifact103.01.0132>

Title:	Bar Pin
Date:	1875 – 1910
Material:	metal
Dimensions:	1.3 x 0.9 x 3.5 cm
Description:	A gold filled pin of three flower blossoms and leaves joined side by side in a line. Pin arches upward slightly, each flower consists of a stem with three sets of compound leaves branching from it, and a cluster of tiny closed buds above. Pin spike hinge and curled hook clasp soldered to back, but pin spike missing.
Subject:	Whyte home households adornment Japanese Edward S. Morse;
Credit:	Gift of Catharine Robb Whyte, O. C., Banff, 1979
Catalogue Number:	103.01.0132

Images



This material is presented as originally created; it may contain outdated cultural descriptions and potentially offensive content. [Read more.](#)

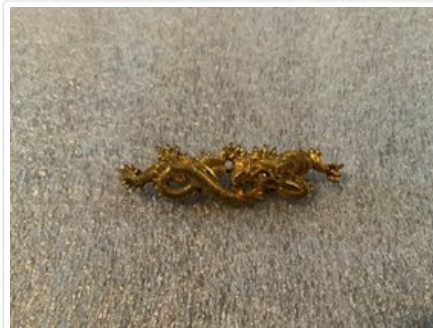


Bar Pin

<https://archives.whyte.org/en/permalink/artifact103.01.0189>

Title:	Bar Pin
Date:	1875 – 1910
Material:	metal
Dimensions:	1.5 x 0.8 x 4.9 cm
Description:	A gold, snake-like, dragon tied in a knot. Cast bronze dragon in high relief with minute detail, scales, teeth, facial features , coiled round into knot with one foot extended forward, and tail behind. Spikes along back. Long pin spike soldered to flat plate at tail end, hinges to fasten beneath locking barrel clasp at other end.
Subject:	Whyte home households adornment animal dragon Japanese Edward S. Morse
Credit:	Gift of Catharine Robb Whyte, O. C., Banff, 1979
Catalogue Number:	103.01.0189

Images



This material is presented as originally created; it may contain outdated cultural descriptions and potentially offensive content. [Read more.](#)



Bowl

<https://archives.whyte.org/en/permalink/artifact104.20.0302>

Title:	Bowl
Date:	1870 – 1890
Material:	ceramic
Dimensions:	4.0 x 9.4 cm
Description:	Very coarse stoneware bowl with transparent glaze and white decorative slip, some crazing, roughly trimmed foot, near base has been trimmed.
Subject:	households Edith Morse Robb Edward S. Morse
Credit:	Gift of Catharine Robb Whyte, O. C., Banff, 1979
Catalogue Number:	104.20.0302

Images



This material is presented as originally created; it may contain outdated cultural descriptions and potentially offensive content. [Read more.](#)



Bowl

<https://archives.whyte.org/en/permalink/artifact104.20.0303>

Title:	Bowl
Date:	1870 – 1890
Material:	ceramic
Dimensions:	3.9 x 7.5 cm
Description:	Very coarse stoneware bowl with transparent glaze and white decorative slip. White interior and white brown cranes, clouds on exterior, roughly trimmed foot.
Subject:	households Edith Morse Robb Edward S. Morse animal crane
Credit:	Gift of Catharine Robb Whyte, O. C., Banff, 1979
Catalogue Number:	104.20.0303

Images



This material is presented as originally created; it may contain outdated cultural descriptions and potentially offensive content. [Read more.](#)

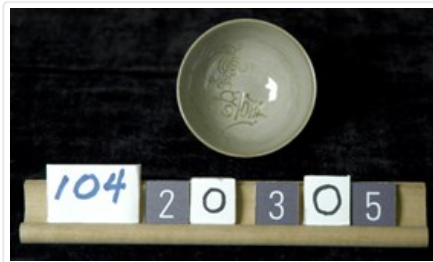


Bowl

<https://archives.whyte.org/en/permalink/artifact104.20.0305>

Title:	Bowl
Date:	1870 – 1890
Material:	ceramic
Dimensions:	3.6 x 6.4 cm
Description:	Fine stoneware bowl, pale green clay which has been incised inside bowl, with a transparent over glaze, calligraphy inside bowl, trimmed foot, oxides can be seen in clay base, crackling of glaze inside and out.
Subject:	households Edith Morse Robb Edward S. Morse
Credit:	Gift of Catharine Robb Whyte, O. C., Banff, 1979
Catalogue Number:	104.20.0305

Images



This material is presented as originally created; it may contain outdated cultural descriptions and potentially offensive content. [Read more.](#)



Bowl

<https://archives.whyte.org/en/permalink/artifact104.20.0309>

Title: Bowl
Date: 1870 – 1890
Material: ceramic
Dimensions: 4.1 x 6.9 cm
Description: Footed bowl with high copper content glaze creating turquoise colour.
Subject: households
Edith Morse Robb
Edward S. Morse
Credit: Gift of Catharine Robb Whyte, O. C., Banff, 1979
Catalogue Number: 104.20.0309

Images



This material is presented as originally created; it may contain outdated cultural descriptions and potentially offensive content. [Read more.](#)



Bowl

<https://archives.whyte.org/en/permalink/artifact104.20.0310>

Title:	Bowl
Date:	1870 – 1890
Material:	ceramic
Dimensions:	4.5 x 8.2 cm
Description:	Elaborately carved foot and sides above base. Iron glaze at base and celadon, gray blue, glaze above with blue and white, 3, birds, chidori figures. Incised at base and stamped ocean waves just above base on side birds and waves.
Subject:	households Edith Morse Robb Edward S. Morse animal bird
Credit:	Gift of Catharine Robb Whyte, O. C., Banff, 1979
Catalogue Number:	104.20.0310

Images



This material is presented as originally created; it may contain outdated cultural descriptions and potentially offensive content. [Read more.](#)