



Button Hook

<https://archives.whyte.org/en/permalink/artifact103.07.1027>

Title:	Button Hook
Date:	1915 – 1925
Material:	metal
Dimensions:	2.2 x 10.2 cm
Description:	One piece button hook. .3 diameter metal, 5.0 long stem is turned into a rounded hook on one end, handle is pressed flat into a guitar shape. One side has a pressed design, other is flat with "The Brewster Trading Co. Banff, Canada". Also on flat side "Pat'd ??35"
Subject:	households clothing Jim Brewster Brewster Trading Co.
Credit:	Gift of Bennie Panaro, Calgary, 1984
Catalogue Number:	103.07.1027

Images



This material is presented as originally created; it may contain outdated cultural descriptions and potentially offensive content. [Read more.](#)

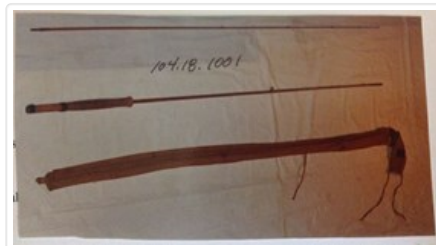


Fishing Rod

<https://archives.whyte.org/en/permalink/artifact104.18.1001%20a-c>

Title:	Fishing Rod
Date:	1930 – 1940
Material:	wood; metal; fibre
Dimensions:	244.3 cm
Description:	Split cane fishing rod in two pieces with canvas case. Light brown varnished cane rod with cork butt grip and black lock ring and butt cap. Metal collars and line guides. Manufacturer's writing on rod above handle. Sewn canvas case with ties.
Subject:	sports fishing Howie Goon Jim Brewster
Credit:	Gift of Howie Goon, Banff, 1984
Catalogue Number:	104.18.1001 a-c

Images



This material is presented as originally created; it may contain outdated cultural descriptions and potentially offensive content. [Read more.](#)



Jim Brewster

<https://archives.whyte.org/en/permalink/artifactkdd.02.01>

Artist: D Konda
Title: Jim Brewster
Date: 1945 – 1965
Medium: oil on canvas
Dimensions: 70.5 x 52.5 cm
Description: Portrait of Jim Brewster
Subject: Portrait
Male
Figure
Jim Brewster
Credit: Gift of Joe A. Brewster, Banff, 1980
Catalogue Number: KdD.02.01

Images



This material is presented as originally created; it may contain outdated cultural descriptions and potentially offensive content. [Read more.](#)



Jim Brewster of Banff

<https://archives.whyte.org/en/permalink/artifactdgn.03.06>

Artist:	Nicholas Raffael de Grandmaison (1892 – 1978, Canadian)
Title:	Jim Brewster of Banff
Date:	1935 – 1945
Medium:	pastel on paper
Dimensions:	76.0 x 56.0 cm
Description:	A realistic rendering of a head and shoulder portrait of Jim Brewster; a three-quarter view; he has on a light brown hat, blue jacket, white shirt, red tie; streaks of colour in background.
Subject:	portrait male portrait: Jim Brewster
Credit:	Gift of Lubov de Grandmaison, 1990
Catalogue Number:	DgN.03.06

Images



This material is presented as originally created; it may contain outdated cultural descriptions and potentially offensive content. [Read more.](#)



Photographic Print

<https://archives.whyte.org/en/permalink/artifact105.02.0041>

Title:	Photographic Print
Date:	1939 – 1939
Material:	paper; wood; glass; metal
Dimensions:	22.7; 37.2 (frame) x 17.5; 29.6 (frame) cm
Description:	A black and white photograph of the King and Queen, in a carriage drawn by two white horses driven by Jim Brewster, with tall trees and mountains in background. The photo has a white mat and a simple black wooden frame. The bottom of the mat is marked "Thier (sic) Majesties King George VI Queen Elizabeth" and "To Pearl from Jim."
Subject:	photography souvenirs Jim Brewster Pearl Moore King George VI Queen Elizabeth
Credit:	Gift of Pearl Evelyn Moore, Banff, 1979
Catalogue Number:	105.02.0041

Images



This material is presented as originally created; it may contain outdated cultural descriptions and potentially offensive content. [Read more.](#)



Prints

<https://archives.whyte.org/en/permalink/descriptions24284>

Part Of: Peter and Catharine Whyte fonds
Description Level: 5 / File
Fonds Number: M36 / V683 / S37
Series: V683 / II / E : Peter Whyte: Banff and Area Activities and Events
Reference Code: V683 / II / E / PA - 1 to 45
Date Range: ca.1910
ca.1924

Physical Description: Photographs: 45 prints; b&w.

Scope & Content:

File consists of 45 b&w. prints. The prints pertain to Peter Whyte and his interests and activities. Prints include images of activities and events in and around Banff including Banff Winter Carnival ski joring, relay race at the hot springs, the ice palace, figure skating, dogsledding, Fernie's female hockey team "The Swastikas", and snowshoe races. Other images include a postcard from Catharine of herself, Herman Ladner (?) and Mrs. Jamieson skiing up Eagle Mountain in Lake Louise with Mount Temple behind them, and other skiers.

Subject Access: Philip Moore
Jim Brewster
Title Source: Title based on contents of file.
Processing Status: Processed

This material is presented as originally created; it may contain outdated cultural descriptions and potentially offensive content. [Read more.](#)



Prints

<https://archives.whyte.org/en/permalink/descriptions24348>

Part Of: Peter and Catharine Whyte fonds
Description Level: 5 / File
Fonds Number: M36 / V683 / S37
Series: V683 / III / A / 3 : Peter and Catharine Whyte: Various Views of Banff and Area
Reference Code: V683 / III / A / 3 / PA - 471 to 496
Date Range: ca. 1930 to ca.1950
Physical Description: Photographs: 25 prints; b&w.

Scope & Content:

File consists of 25 b&w prints. The prints pertain to Peter and Catharine's activities and interests. Prints document people and places in and around Banff. Images include the King and Queen in a motorcade through town and at the train station. Other images are of the Legion, an airplane, and a young boy on skis.

Subject Access: Jim Brewster
Phil Moore
Title Source: Title based on contents of file.
Processing Status: Processed

This material is presented as originally created; it may contain outdated cultural descriptions and potentially offensive content. [Read more.](#)



Trail Blazers of the Canadian Rockies

<https://archives.whyte.org/en/permalink/catalogue15459>

Author: MacDonald, Graham Reginald
Publisher: Banff, AB : Holy Grail Publishers
Published Date: 2017
Physical Description: 78 p. : ill
Medium: Library - Book (including soft-cover and pamphlets)
Subjects: Trail Blazers
Poems
Tom Wilson
Jim Brewster
Bill Peyto
Mary Schaffer
Notes: Includes acknowledgements to the Whyte Museum archives staff
Accession Number: 2017.8671
Call Number: 05.1 Mc31t
Collection: Archives Library

This material is presented as originally created; it may contain outdated cultural descriptions and potentially offensive content. [Read more.](#)



Trophy; Athletic Statuette

<https://archives.whyte.org/en/permalink/artifact103.09.1093>

Title: Trophy; Athletic Statuette
Date: 1936
Material: metal; wood
Dimensions: 26.7 x 13.0 cm
Description: Junior Combined skiing trophy presented by Jim Brewster
"Championship Canadian Rockies Downhill & Slalom 1936. Silver plate skis on end with ski pole forming tripod on a metal base 8.8 dia. Skis are 19.5 long modelled realistically with buckle bindings and cable, etc. Ski pole has wrist strap. A wreath of leaves lays on the bindings and a smaller wreath behind the skis and pole. Turned brown wood base with silver plated name plates around it.
Subject: sports
winter
skiing
Jim Brewster
Credit: Gift of Tillie Knight, Banff, 1975
Catalogue Number: 103.09.1093

Images



This material is presented as originally created; it may contain outdated cultural descriptions and potentially offensive content. [Read more.](#)



Upright Piano

<https://archives.whyte.org/en/permalink/artifact104.34.0002>

Title: Upright Piano

Date: 1900 – 1903

Material: wood, oak; ivory; metal, brass; fibre

Dimensions: 139.0 x 68.0 x 156.0 cm

Description: An oak, rectangular, upright piano with carved spiral legs supporting the keyboard. A hinged lid covers the keyboard, and a large ornate brass plate locks the lid in place. The upright box holds hammers and wires on a large cast metal frame that is labelled "Bellmetal Tone Pulsating Bridge". The metal frame is decorated with scrollwork and flowers. A large false panel and three brass footpedals are underneath the keyboard. There are two smaller false panels at the top with a large ornate brass false lock plate at the centre and two large ornate brass false gate-type hinges at each side. The top panel actually hinges at the top to open and has a wooden groove at the bottom to hold sheet music. The piano is marked with "Gerhard Heintzman Toronto" painted inside the keyboard lid. Cross reference: 104.34.0001 (piano bench)

Subject: households
music
hobbies
Fred Hussey
Philip Moore
Jim Brewster
events
World Fair
entertainment
social customs

Credit: Gift of Pearl Evelyn Moore, Banff, 1979

Catalogue Number: 104.34.0002

Images



This material is presented as originally created; it may contain outdated cultural descriptions and potentially offensive content. [Read more.](#)