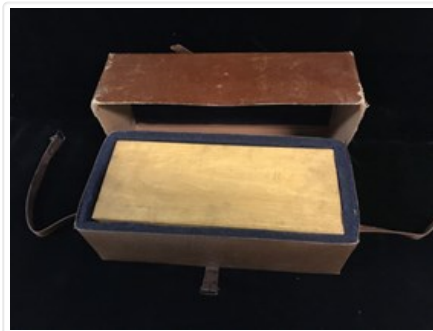


### Lantern Slide Case

<https://archives.whyte.org/en/permalink/artifact105.05.1010%20a-c>

Title:	Lantern Slide Case
Date:	1910 – 1925
Material:	wood; fibre; paper; skin; metal
Description:	<p>Wooden box with slots and padded field case. (a) wooden box, 32.4 x 10.5 x 13.2, 2 hook and eye latches on front. 64 slots with paper board dividers inside. "CAUTION" label inside lid, which reads "NEVER SHOW LANTERN SLIDES IN A STANDARD MOTION PICTURE MACHINE. THIS TYPE OF PROJECTOR WILL BREAK ALL SLIDES SHOWN." blue pencil writing "55 Slides, 54 neg. ———" White paper dot on hinge edge, brass hinges (b) rust brown pressed cardboard box, 36.0 x 11.4 x 16.6, fastened together with brass tacks. 1.5 thick felt padding interior. Leather straps with buckle fasteners running length and width (c) pressed cardboard box, 37.5 x 11.7 x 17.7, lid fastened with staples at ends. Felt padding interior top. A little wear on corner edges. Manufacturer's stamp interior "Manufactured by [ineligible] BOX CO. UNITED OTTAWA, CANADA." fragments of destination label exterior, "Banff, Alberta."</p>
Subject:	<p>photography</p> <p>Rev Tom Lonsdale</p> <p>Mary Schaffer Warren</p>
Credit:	Gift of Tom Lonsdale, Banff, 1976
Catalogue Number:	105.05.1010 a-c

### Images



This material is presented as originally created; it may contain outdated cultural descriptions and potentially offensive content. [Read more.](#)



## Lantern Slide Projector Projector

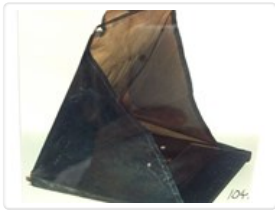
<https://archives.whyte.org/en/permalink/artifact105.05.1009%20a-d>

Title:	Lantern Slide Projector Projector
Date:	1910 – 1925
Material:	metal; glass; fibre; wood;
Description:	Lantern slide projector, Tom Lonsdale's. Black, rectangular box, 23.1 x 11.7 x 11.7, housing concave mirror in holder, projection bulb (500 W) 2 convex glass, narrow slot for slide carrier. Wooden track with squared centre structure travelling bracket with 2 openings for transparency (9.1 x 7.6) Accordion bellows with metal plate holding lens apparatus, lens, black and silver in colour extending (10.2 with 5.5 diameter). Turn knob fine focus, "H" shape stand attached to bottom centre, telescopic rods either side bracing bellows and light bulb socket. Copper colour cloth covered cord. Hand switch and M/F plugs approximately middle of cord, male plug on end, housing enclosure lid. Overall dimensions: L:40.5, H: 27.3,W: 30.5.
Subject:	photography Rev. Tom Lonsdale Mary Schaffer Warren
Credit:	Gift of Tom Lonsdale, Banff, 1976
Catalogue Number:	105.05.1009 a-d

### Images



This material is presented as originally created; it may contain outdated cultural descriptions and potentially offensive content. [Read more.](#)



## Photograph Accessory

<https://archives.whyte.org/en/permalink/artifact104.41.1022>

Title:	Photograph Accessory
Date:	1920 – 1950
Material:	rubberized canvas, wood
Description:	black, tent-like object with wooden base; almost square wooden base, black, round hole in middle with squared corners (dia. 9.3); 4 small screws, one at each round edge; 4 large screws, 2 eachside nearest tent-type opening; topside: 2 bowed, flat metal pieces with clothwrap around tips attached with screws nearest to closed edge; metal rod shaped into square hoop, spring attached at bases; rubberized canvas hood, brown underside, black topside; 5 narrow compartments inside hood; edges of hood attached with snaps each side of opening to wooden base.
Subject:	Rev. Tom Lonsdale photography
Credit:	Gift of Tom Lonsdale, Banff, 1976
Catalogue Number:	104.41.1022

## Images



This material is presented as originally created; it may contain outdated cultural descriptions and potentially offensive content. [Read more.](#)



## Portable Easel

<https://archives.whyte.org/en/permalink/artifact104.39.1018>

Title:	Portable Easel
Date:	prior to 1985
Material:	metal
Dimensions:	116.0 cm
Description:	Portable metal easel with tripod base. Metal upright extends through centre of round metal plate at top. Three metal canvas holders.
Subject:	hobbies Rev. Tom Lonsdale artists painting
Credit:	Gift of Muriel E. Dayman, Calgary, 1985
Catalogue Number:	104.39.1018

## Images



This material is presented as originally created; it may contain outdated cultural descriptions and potentially offensive content. [Read more.](#)