



Eyeglasses

<https://archives.whyte.org/en/permalink/artifact103.08.1051%20a-c>

Title:	Eyeglasses
Date:	1750 – 1850
Material:	shell, tortoise; paper; metal
Description:	Small round glasses with tortoise shell frame in one piece. The arms are hinged at the sides and have curved ear arms. Each arm ends with a circle cut out.
Subject:	Mary Schaffer Serena M. Potts
Credit:	Gift of Charles C. Reid, Banff, Alberta, 1986
Catalogue Number:	103.08.1051 a-c

Images



This material is presented as originally created; it may contain outdated cultural descriptions and potentially offensive content. [Read more.](#)



Sampler

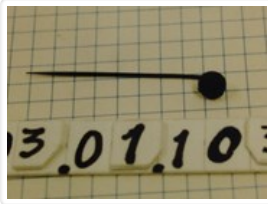
<https://archives.whyte.org/en/permalink/artifact107.02.0008>

Title:	Sampler
Date:	1822 – 1822
Material:	fibre, flax; wood; paper; metal
Dimensions:	19.0; 22.0 (frame) x 21.0; 23.5 (frame) cm
Description:	<p>A needlepoint sampler, in many colours, done in cross-stitch on loosely woven ecru linen. The sampler has a double-stitched border with stitched bars between each row of letters (A-Z) beginning with capital letters, followed by numerals from 1 to 10, then lower case letters (a-z), then numerals from 1 to 6, then large capital letters (A-F), and ending with "Serena Matilda Potts 1822." The piece was originally framed in a simple brown wood frame with a parallel line (wood grain?) texture. The paper backing has "Serena Potts' work born 1812" handwritten and a "Royal Picture Gallery" (Calgary, Alberta) framer's sticker.</p>
Subject:	<p>households</p> <p>decorative</p> <p>children</p> <p>crafts</p> <p>needlework</p> <p>Serena M. Potts</p> <p>Mary Schaffer Warren</p>
Credit:	Gift of Pearl Evelyn Moore, Banff, 1979
Catalogue Number:	107.02.0008

Images



This material is presented as originally created; it may contain outdated cultural descriptions and potentially offensive content. [Read more.](#)

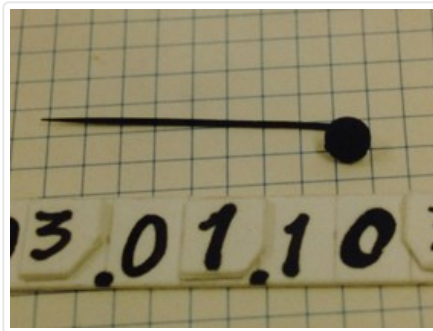


Stickpin

<https://archives.whyte.org/en/permalink/artifact103.01.1033>

Title:	Stickpin
Date:	prior to 1888
Material:	metal, silver
Dimensions:	6.0 cm
Description:	A small straight scarf pin of silver. It has a pinhead cluster at one end which has a diamond effect. The little picked pinhead has .8 cm. diameter.
Subject:	households jewellery Serena M. Potts Mary Schaffer
Credit:	Gift of Charles C. Reid, Banff, Alberta, 1986
Catalogue Number:	103.01.1033

Images



This material is presented as originally created; it may contain outdated cultural descriptions and potentially offensive content. [Read more.](#)



Stitched Picture

<https://archives.whyte.org/en/permalink/artifact107.02.1004%20a%2cb>

Title:	Stitched Picture
Date:	prior to 1865
Material:	hair, sheep; fibre; wood
Dimensions:	44.5 x 44.0 cm
Description:	Framed, embroidered picture with border of taupe, green and burgundy stylized flowers ca 3.5 wide. Background colour is burgundy, centre is a stylized "Egyptian" head and shoulders framed in a circular cream background with a narrow khaki green border. Around this is a symmetrical design of four groupings of stylized flowers at sides top and bottom on beige background surrounded by a narrow khaki border. Between each of these designs are four groupings of three flowers in same style embroidered directly on burgundy background.
Subject:	households furnishings Serena M. Potts Mary Shaffer Warren needlework hobbies
Credit:	Gift of Charles C. Reid, Banff, Alberta, 1986
Catalogue Number:	107.02.1004 a,b

Images



This material is presented as originally created; it may contain outdated cultural descriptions and potentially offensive content. [Read more.](#)