

Research Collections



Bowl

<https://archives.whyte.org/en/permalink/artifact104.20.1120>

Title:	Bowl
Date:	1890 – 1940
Material:	ceramic
Description:	Chinese ceramic bowl decorated with landscape scenes. The two handles of the bowl are faces with tall feather headdresses that extend above the rim of the bowl.
Subject:	households Simpson family
Credit:	Gift of James (Sr.) Simpson, 1968
Catalogue Number:	104.20.1120

Images



This material is presented as originally created; it may contain outdated cultural descriptions and potentially offensive content. [Read more.](#)



Candle Holder

<https://archives.whyte.org/en/permalink/artifact102.05.1013%20a-c>

Title: Candle Holder
Date: 1920 – 1950
Material: metal
Description: 3 silver coloured metal clamping candle holders.
Subject: households
Christmas
Simpson family
Credit: Gift of James (Sr.) Simpson, 1968
Catalogue Number: 102.05.1013 a-c

Images



This material is presented as originally created; it may contain outdated cultural descriptions and potentially offensive content. [Read more.](#)



Ladle

<https://archives.whyte.org/en/permalink/artifact104.20.1119>

Title:	Ladle
Date:	1890 – 1950
Material:	horn, sheep
Description:	Ladle made from sheep horn.
Subject:	households Simpson family
Credit:	Gift of James (Sr.) Simpson, 1968
Catalogue Number:	104.20.1119

Images



This material is presented as originally created; it may contain outdated cultural descriptions and potentially offensive content. [Read more.](#)



Mary Simpson : [correspondence, newsclippings, printed matter]. -- 1941-1976

<https://archives.whyte.org/en/permalink/descriptions7706>

Part Of: Peter and Catharine Whyte fonds
Description Level: 5 / File
Fonds Number: M36 / V683 / S37
Series: I.A.2. Catharine Robb Whyte papers / photographs
Reference Code: M36 / I / A / 2 / c / 427 - 428
Responsibility: Responsibility: Mary Simpson
Physical Description: 2 files of textual records
Scope & Content:
Mary Simpson is the daughter of Jimmy and Billie Simpson.
Subject Access: Simpson, Mary
Simpson family

This material is presented as originally created; it may contain outdated cultural descriptions and potentially offensive content. [Read more.](#)



Mug

<https://archives.whyte.org/en/permalink/artifact104.20.1118>

Title:	Mug
Date:	1952 – 1960
Material:	metal
Description:	Small footed metal mug with a thumbrest on the handle. The mug has a flared rim and the initials "D.J.S." engraved on one side.
Subject:	households Simpson family David Simpson
Credit:	Gift of James (Sr.) Simpson, 1968
Catalogue Number:	104.20.1118

Images



This material is presented as originally created; it may contain outdated cultural descriptions and potentially offensive content. [Read more.](#)

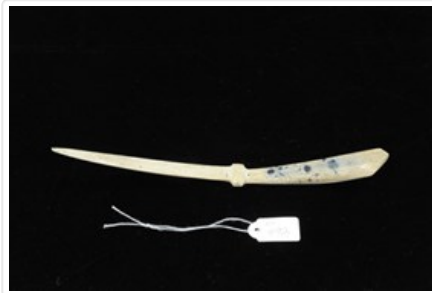


Paper Knife

<https://archives.whyte.org/en/permalink/artifact105.06.1028>

Title:	Paper Knife
Date:	1890 – 1960
Material:	antler
Description:	A gently curved letter opener made from one piece of antler.
Subject:	Simpson family crafts carving
Credit:	Gift of James (Sr.) Simpson, 1968
Catalogue Number:	105.06.1028

Images



This material is presented as originally created; it may contain outdated cultural descriptions and potentially offensive content. [Read more.](#)



Patch

<https://archives.whyte.org/en/permalink/artifact103.09.1185>

Title:	Patch
Date:	1935 – 1945
Material:	fibre
Dimensions:	9.0 x 9.0 cm
Description:	One felt patch, shield-shaped, black with yellow appliqued letters: "BHS", handstitched.
Subject:	Banff High School Simpson family
Credit:	Gift of James (Sr.) Simpson, 1968
Catalogue Number:	103.09.1185

Images



This material is presented as originally created; it may contain outdated cultural descriptions and potentially offensive content. [Read more.](#)



Phonograph Record

<https://archives.whyte.org/en/permalink/artifact105.03.1005>

Title: Phonograph Record
Date: 1900 – 1940
Material: plastic; paper
Description: Collection of old records, most with paper sleeves.
Subject: entertainment
Simpson family
music
Credit: Gift of James (Sr.) Simpson, 1968
Catalogue Number: 105.03.1005

This material is presented as originally created; it may contain outdated cultural descriptions and potentially offensive content. [Read more.](#)



Picture

<https://archives.whyte.org/en/permalink/artifact107.02.1033>

Title: Picture
Date: 1930 – 1945
Material: wood; paper
Dimensions: 17.0 x 24.0 cm
Description: One wooden cut-out picture with silhouetted trees and bison. Wood painted dark brown with pale yellow paper background behind cut-out. "BOW LAKES" written in white ink at bottom of picture.
Subject: crafts
Bow Lakes
Num-ti-jah Lodge
Simpson family
Credit: Gift of James (Sr.) Simpson, 1968
Catalogue Number: 107.02.1033

This material is presented as originally created; it may contain outdated cultural descriptions and potentially offensive content. [Read more.](#)



Simpsons. -- 1937-1974

<https://archives.whyte.org/en/permalink/descriptions7704>

Part Of: Peter and Catharine Whyte fonds
Description Level: 5 / File
Fonds Number: M36 / V683 / S37
Series: I.A.2. Catharine Robb Whyte papers / photographs
Reference Code: M36 / I / A / 2 / c / 425
Responsibility: Responsibility: Billie & Mary Simpson
Physical Description: 1 file of textual records : includes oversize items
Scope & Content:

Includes correspondence, financial statements, notes and plans regarding Num-Ti- Jah Lodge.
Billie Simpson is Jimmy's wife and Mary is their daughter.

Subject Access: Simpson, Jimmy (James Sr.)
Simpson, Billie
Simpson, Mary
Simpson family
Num-Ti-Jah Lodge

Content Details: Num-Ti-Jah Lodge record of building loan from Catharine and Peter Whyte, 1947-1949. Held in oversize "D"

This material is presented as originally created; it may contain outdated cultural descriptions and potentially offensive content. [Read more.](#)