

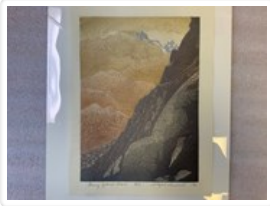


504. Cathedral Crag, Field Hill

<https://archives.whyte.org/en/permalink/descriptions20346>

Part Of:	Nicholas Morant fonds
Description Level:	5 / File
Fonds Number:	M300 / S20 / V500
Sous-Fonds:	V500
Sub-Series:	I.A. Photography : negatives and transparencies / 1.c. Darkroom files : colour I
Accession Number:	7438
Reference Code:	V500 / A4 / 504
GMD:	Photograph Transparency
Responsibility:	Produced by Nicholas Morant
Date Range:	[between 1930 and 1980]
Physical Description:	3 photographs : transparencies, col, 6x6 cm
Scope & Content:	File consists of 3 colour transparency photographs. Content pertains to Cathedral Crag, Field Hill in Yoho National Park, BC
Subject Access:	Yoho National Park
Geographic Access:	Canada British Columbia Canadian Rocky Mountains
Language:	N/A
Creator:	Nicholas Morant
Title Source:	Title based on contents of file
Processing Status:	Processed

This material is presented as originally created; it may contain outdated cultural descriptions and potentially offensive content. [Read more.](#)



Along Yuknes Trail

<https://archives.whyte.org/en/permalink/artifactlaw.04.17>

Artist:	Wilfred Lambert
Title:	Along Yuknes Trail
Date:	1980
Medium:	print on paper
Dimensions:	43.0 x 32.0 cm
Description:	Woodblock print showing blocky grey mountain in foreground at right. Stylized wavy mountains in varying shades of brown and orange are in background at left with grey snow-capped peaks beyond. Handwritten in pencil at bottom left is "Along Yuknes Trail 3/10" with "Wilfred Lambert /80" at right. Red "W" in circle is stamped at bottom right.
Subject:	Mountains Lake O'Hara Yoho National Park
Credit:	Gift of Tim Wake, Whistler, 1990
Catalogue Number:	LaW.04.17

Images



This material is presented as originally created; it may contain outdated cultural descriptions and potentially offensive content. [Read more.](#)



The animals of the Burgess Shale

<https://archives.whyte.org/en/permalink/catalogue5487>

Author: Morris, Simon Conway
Responsibility: by Simon Conway Morris and H.B. Whittington
Physical Description: p.122-133 : ill., map
Medium: Library - Book (including soft-cover and pamphlets)
Subjects: Yoho National Park
Notes: In Scientific American, vol.241, no.1, July 1979
Accession Number: 12000
Call Number: 03.2 M83
Collection: Archives Library

This material is presented as originally created; it may contain outdated cultural descriptions and potentially offensive content. [Read more.](#)



Animals of the Burgess Shale : Yoho National Park, British Columbia

<https://archives.whyte.org/en/permalink/catalogue19894>

Author: Environment Canada
Publisher: Environment Canada and Canadian Parks Service
Published Date: 1988
Medium: Library - Book (including soft-cover and pamphlets)
Subjects: Burgess Shale
Yoho National Park
Fossils
Abstract: Pertains to a pamphlet detailing the animal species that have been discovered in the Burgess Shale in British Columbia. Located in Yoho National Park, the Burgess Shale is a fossil-bearing deposit that was originally founded by Charles Walcott. The pamphlet tells of Walcott's history and the early beginnings following his findings, as well as the species that inhabited the area millions of years prior.
Notes: Front reads: Exquisitely detailed fossils found in layer of shale in Yoho National Park open a window on life on Earth 530 millions years ago
Accession Number: 2017.8683
Call Number: 04 E1a Pam
Collection: Archives Library

This material is presented as originally created; it may contain outdated cultural descriptions and potentially offensive content. [Read more.](#)



Banff rock : a guidebook to rock climbing in Banff National Park, Canada

<https://archives.whyte.org/en/permalink/catalogue14540>

Author:	Perry, Chris
Responsibility:	Chris Perry
Publisher:	Altona, Manitoba : Friesens
Published Date:	2012
Physical Description:	510 pages : illustrations, maps ; 18 cm
Medium:	Library - Book (including soft-cover and pamphlets)
Subjects:	Banff National Park Guidebooks Kootenay National Park Rock climbing Sport climbing Thompson, David Yoho National Park
ISBN:	9780987937001
Accession Number:	P2015-03-31
Call Number:	01.4 P42b
Collection:	Archives Library

This material is presented as originally created; it may contain outdated cultural descriptions and potentially offensive content. [Read more.](#)



The Banff-Jasper highway : descriptive guide

<https://archives.whyte.org/en/permalink/catalogue15289>

Author: Williams, Mabel B
Publisher: Vancouver : H.R. Larson Publishing Co.
Published Date: 1948
Physical Description: ix, 136 pages, illustrations, maps
Medium: Library - Book (including soft-cover and pamphlets)
Subjects: Banff National Park
Jasper National Park
Kootenay National Park
Travel
Yoho National Park
Notes: Both Copy 1 & Copy 2 have publisher signature
Accession Number: 492 (Copy 1&2)
2014.8385 deaccessioned
From card and old db record, unsure of which edition, missing copies:
5142
Call Number: 02.6 W67 1948
02.6 W67 1948 c. 2
Collection: Archives Library

This material is presented as originally created; it may contain outdated cultural descriptions and potentially offensive content. [Read more.](#)



The Banff-Jasper Highway : descriptive guide

<https://archives.whyte.org/en/permalink/catalogue4002>

Author: Williams, Mabel B
Responsibility: illustrated by Mabel Bain
Edition: Rev. ed
Publisher: Saskatoon : H.R. Larson
Published Date: 1963
Physical Description: ix, 136p. : ill., map
Medium: Library - Book (including soft-cover and pamphlets)
Subjects: Banff National Park
Jasper National Park
Kootenay National Park
Travel
Yoho National Park
Accession Number: 2278
Call Number: 02.6 W67 1963
Collection: Archives Library

This material is presented as originally created; it may contain outdated cultural descriptions and potentially offensive content. [Read more.](#)



Beavers up the creek

<https://archives.whyte.org/en/permalink/catalogue11421>

Author: Bailey, Paul
Physical Description: p. 37-43 : col. ill., 1 map
Medium: Library - Book (including soft-cover and pamphlets)
Subjects: Yoho National Park
Notes: In Beautiful British Columbia, vol. 39, number 3 (Fall 1997)
Accession Number: 7053
Call Number: 04.2 B15 Pam
Collection: Archives Library

This material is presented as originally created; it may contain outdated cultural descriptions and potentially offensive content. [Read more.](#)



Canada west

<https://archives.whyte.org/en/permalink/catalogue3825>

Author: Niven, Frederick John
Publisher: London : Dent
Published Date: 1930
Physical Description: xi, 188p. : ill., map
Medium: Library - Book (including soft-cover and pamphlets)
Subjects: Banff National Park
Kootenay region
Yoho National Park
Notes: Bibliography
Accession Number: 323
Call Number: 02.5 N64
Collection: Archives Library

This material is presented as originally created; it may contain outdated cultural descriptions and potentially offensive content. [Read more.](#)



Canada's Great Divide Trail : hiking the backbone of the Rockies

<https://archives.whyte.org/en/permalink/catalogue15342>

Author: Edwards, Mike W.
Responsibility: Mike, W. Edwards
Photographs by Lowell Georgia
Publisher: In National Geographic Vol.143, No.6, June 1973
Published Date: 1973
Physical Description: p.795-817, illustrations (colour)
Medium: Library - Periodical
Subjects: Assiniboine, Mount
Banff National Park
Conservation
Flora
Great Divide Trail
Hiking
Jasper National Park
Kootenay National Park
Lake O'Hara
Maligne Lake
Robson, Mount
Yoho National Park
Call Number: P
Collection: Archives Library

This material is presented as originally created; it may contain outdated cultural descriptions and potentially offensive content. [Read more.](#)