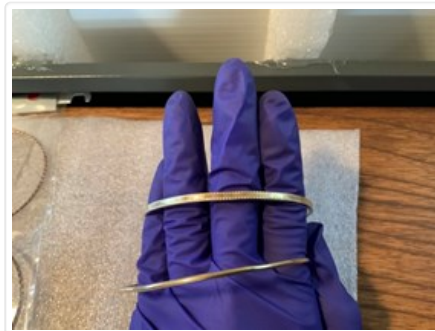


Bangle Bracelet

<https://archives.whyte.org/en/permalink/artifact103.01.0107%20a%2cb>

Title:	Bangle Bracelet
Date:	1920 – 1940
Material:	metal
Dimensions:	0.2 x 6.0 x 6.9 cm
Description:	Two, roughly circular, gold, bangle bracelets, each with a split in the side. (a) round gold wire, hollow and slightly dented all around, split at side separates approximately .6 cm. (b) hollow, flat, gold band approximately .2 x .3 cm. design etched on outer surface consisting of faceted band along each edge with line texture between forming diamond and X-shapes around circumference. Roughly oval with dents and creases all around, ends touch at split in side, but do not meet. Marks: "WAB 14K"
Subject:	Whyte home households adornment
Credit:	Gift of Catharine Robb Whyte, O. C., Banff, 1979
Catalogue Number:	103.01.0107 a,b

Images



This material is presented as originally created; it may contain outdated cultural descriptions and potentially offensive content. [Read more.](#)



Bangle Bracelet

<https://archives.whyte.org/en/permalink/artifact103.01.0111%20a-d>

Title:	Bangle Bracelet
Date:	1920 – 1940
Material:	metal
Dimensions:	0.2 x 5.9 x 6.8 cm
Description:	A collection of four bangle bracelets, (a) gold wire, circle of hollow gold wire .2 mm in diameter. (b) twisted wire, pinkish gold circle of twisted wire 2 mm in diameter. (c,d) flat silver hoops, handmade from wire 3 x 2 mm.
Subject:	Whyte home households adornment
Credit:	Gift of Catharine Robb Whyte, O. C., Banff, 1979
Catalogue Number:	103.01.0111 a-d

Images



This material is presented as originally created; it may contain outdated cultural descriptions and potentially offensive content. [Read more.](#)



Bangle Bracelet

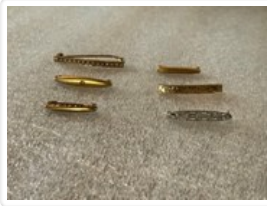
<https://archives.whyte.org/en/permalink/artifact103.01.0139%20a%2cb>

Title:	Bangle Bracelet
Date:	1900 – 1925
Material:	metal
Dimensions:	0.6 x 6.5 cm
Description:	Two sterling silver hoop bracelets with design on outside, machined. (a) Greek key design raised above textured surface around outside. Solder joint where hoop joined can be seen. Small white tag looped around bracelet "#71" one side, and "\$3.95 crossed out WTX 2.00" on other in pencil. Marks: inside: "WRJ" (hallmark) sterling" (b) textured series of faceted diamond shapes around outside, solder line where hoop joined can be seen. Small white tag looped around bracelet, "#63" one side, and "\$1.95, crossed out, 1.00" on other. Marks: inside, "WRJ" (hallmark) sterling"
Subject:	Whyte home households adornment
Credit:	Gift of Catharine Robb Whyte, O. C., Banff, 1979
Catalogue Number:	103.01.0139 a,b

Images



This material is presented as originally created; it may contain outdated cultural descriptions and potentially offensive content. [Read more.](#)



Bar Pin

<https://archives.whyte.org/en/permalink/artifact103.01.0109%20a-f>

Title:	Bar Pin
Date:	1890 – 1925
Material:	metal; pearl
Dimensions:	0.6 x 3.1 cm
Description:	<p>A collection of six small gold bar pins, two of which are set with pearls. Hinged spikes on back fasten under hook clasps on opposite side. (a) pearls along length, 3.1x.6x.3, plain rectangular bar with fifteen tiny cultured seed pearls, .2 cm dia. set side by side in a groove down the middle with small melted beads of gold holding them in place. (b) single pearl, 2.4x .5 x .4 , small rounded tapered ellipse of gold with tiny seed pearl , .2 cm dia set into bevelled hole at centre, hollow. Stamped on back "14k" and torch hallmark. (c) same as (b) without pearl, 1.9 x .4 x .2, die struck. Hook clasp has double legs but joined by its curve into single hook. Period 1890 - 1915. (d) same as (c) but flat with border, 2.0 x .4 x .3, plain with small, gold, 14k, machine stamped, bead edging completely around outside. (e) engraved, 2.6 x .4 x .4, flat, rectangular bar with scrolled design engraved on side of hook clasp. Period 1890 - 1915. (f) silver, rhodium? plated over gold, 2.4 x .5 x .4, small openwork ellipse with five small flowers across middle joined by wire filigree. Cuts in flowers and around edges cause sparkling, diamond like appearance. Small hook clasp has tiny lever on back to lock pin when pushed down, 14k stamped on back. Period 1890-1915.</p>
Subject:	<p>Whyte home</p> <p>households</p> <p>adornment</p>
Credit:	Gift of Catharine Robb Whyte, O. C., Banff, 1979
Catalogue Number:	103.01.0109 a-f

Images



This material is presented as originally created; it may contain outdated cultural descriptions and potentially offensive content. [Read more.](#)



Bar Pin

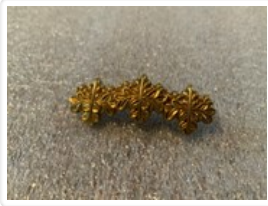
<https://archives.whyte.org/en/permalink/artifact103.01.0131%20a%2cb>

Title:	Bar Pin
Date:	1870 – 1910
Material:	metal; stone; pearl
Dimensions:	0.7 x 0.3 x 2.3 cm
Description:	<p>Two small bar pins set with pearls alternating with pale blue sapphires. Gold bar has tiny gold spikes to hold pearls, and small prongs to hold sapphires at same height as pearls. Hinged gold pin spike at one end of back fastens in clasp at opposite end. (a) smaller - four pearls alternated with three sapphires, prong fitting holding sapphires quite solid, clasp is simple hook. (b) longer - five sapphires alternating with four pearls. Prong fitting holding sapphires quite open, almost being four legs on which each stone rests. Pearl of uniform size but slightly irregular in shape. Hook clasp has simple locking mechanism.</p>
Subject:	<p>Whyte home</p> <p>households</p> <p>adornment</p>
Credit:	Gift of Catharine Robb Whyte, O. C., Banff, 1979
Catalogue Number:	103.01.0131 a,b

Images



This material is presented as originally created; it may contain outdated cultural descriptions and potentially offensive content. [Read more.](#)



Bar Pin

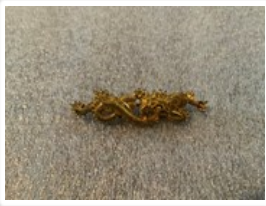
<https://archives.whyte.org/en/permalink/artifact103.01.0132>

Title:	Bar Pin
Date:	1875 – 1910
Material:	metal
Dimensions:	1.3 x 0.9 x 3.5 cm
Description:	A gold filled pin of three flower blossoms and leaves joined side by side in a line. Pin arches upward slightly, each flower consists of a stem with three sets of compound leaves branching from it, and a cluster of tiny closed buds above. Pin spike hinge and curled hook clasp soldered to back, but pin spike missing.
Subject:	Whyte home households adornment Japanese Edward S. Morse;
Credit:	Gift of Catharine Robb Whyte, O. C., Banff, 1979
Catalogue Number:	103.01.0132

Images



This material is presented as originally created; it may contain outdated cultural descriptions and potentially offensive content. [Read more.](#)

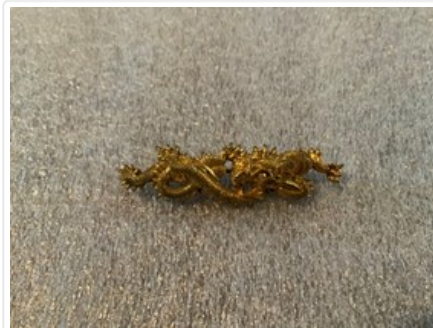


Bar Pin

<https://archives.whyte.org/en/permalink/artifact103.01.0189>

Title:	Bar Pin
Date:	1875 – 1910
Material:	metal
Dimensions:	1.5 x 0.8 x 4.9 cm
Description:	A gold, snake-like, dragon tied in a knot. Cast bronze dragon in high relief with minute detail, scales, teeth, facial features , coiled round into knot with one foot extended forward, and tail behind. Spikes along back. Long pin spike soldered to flat plate at tail end, hinges to fasten beneath locking barrel clasp at other end.
Subject:	Whyte home households adornment animal dragon Japanese Edward S. Morse
Credit:	Gift of Catharine Robb Whyte, O. C., Banff, 1979
Catalogue Number:	103.01.0189

Images



This material is presented as originally created; it may contain outdated cultural descriptions and potentially offensive content. [Read more.](#)



Bar Pin

<https://archives.whyte.org/en/permalink/artifact103.01.0190%20a-c>

Title:	Bar Pin
Date:	1875 – 1925
Material:	metal; stone; pearl
Dimensions:	1.1 x 0.7 x 7.4 cm
Description:	Three long bar pins, each containing sapphires. Long, hinged pin spike across back fastens under locking hook clasp. (a) with pearls, long, narrow, rhodium plated, delicate wire filigree set with five, small 3 dia., blue sapphires spaced evenly across, with four, small .2 dia. cultured pearls set between. Filigree follows small, triangular, leaf shape on either side of the sapphires. Solid areas sharply engraved to pick up light and sparkle. Back gold colour. (b) with moonstones, long, oval, clear moonstone 1.6 x .6 at middle, flanked by smaller, clear, round .5 dia. moonstone each side. Halfway along remainder of each side is large .5 dia. blue sapphire. Areas between stones filled with heavy interlocking wire circles. (c) star sapphire, long, elliptical, solid gold pin with design around flowers and leaves pierced through. Oval .9 x .6, domed star sapphire at middle. Hook clasp does not lock.
Subject:	Whyte home households adornment
Credit:	Gift of Catharine Robb Whyte, O. C., Banff, 1979
Catalogue Number:	103.01.0190 a-c

Images



This material is presented as originally created; it may contain outdated cultural descriptions and potentially offensive content. [Read more.](#)



Bar Pin

<https://archives.whyte.org/en/permalink/artifact103.01.0191%20a-c>

Title:	Bar Pin
Date:	1875 – 1925
Material:	metal; pearl
Dimensions:	0.6 x 0.4 x 2.6 cm
Description:	Three small bar pins, 2 of delicate filigree, 1 arced with pearls. Hinged pin spike across back fastens under locking hook clasp. (a) rhodium filigree, narrow rectangle containing delicate, straight wires connecting four small flowers across pin. Rhodium plated metal sharply engraved to pick up the light and sparkle. Back and sides gold colour. (b) gold filigree, as (a) but delicate wire ellipse on either side of single, central flower. (c) pearls, small, flat, gold bar shaped in 90 degree arc with eleven, small, cultured pearls set along arc, pearls graduate in size from .1 to .2 cm, with largest at the middle. Pin spike passes from one end of arc to other. Hook clasp does not have locking mechanism.
Subject:	Whyte home households adornment
Credit:	Gift of Catharine Robb Whyte, O. C., Banff, 1979
Catalogue Number:	103.01.0191 a-c

Images



This material is presented as originally created; it may contain outdated cultural descriptions and potentially offensive content. [Read more.](#)



Bar Pin

<https://archives.whyte.org/en/permalink/artifact103.01.0192%20a%2cb>

Title:	Bar Pin
Date:	1935 – 1975
Material:	metal; stone; glass
Dimensions:	0.9 x 0.8 . x 4.1 cm
Description:	Two medium sized bar pins with clear oval stones at centres. Long hinged pin spikes across back fasten under locking hook clasps. (a) gold elliptical shaped with gold wire cross-hatching forming large diamond shapes on each side, enclosed with another wire outlining the shape of the pin. Large 1.1 x .7 cm , oval, water opal, Australia Stone? flashing green and red fire. Back of pin flat, forming silhouette of front. (b) rhodium ? plated, sparkling silver coloured ellipse of fine, delicate, filigree bordered by a narrow band of sharply engraved pattern which picks up the light. Framed at centre is oval 1.4 x .9 piece of transparent glass with a small diamond .2 cm dia. at the centre set in a diamond shaped setting. Back of glass carved with radiating spikes which show through and form pattern around diamond.
Subject:	Whyte home households adornment
Credit:	Gift of Catharine Robb Whyte, O. C., Banff, 1979
Catalogue Number:	103.01.0192 a,b

Images



This material is presented as originally created; it may contain outdated cultural descriptions and potentially offensive content. [Read more.](#)