

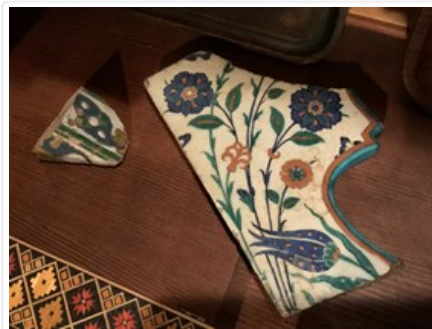


House Tile

<https://archives.whyte.org/en/permalink/artifact101.02.0008%20a%2cb>

Title:	House Tile
Date:	1555 – 1700 (attributed)
Material:	ceramic
Dimensions:	14.5 x 2.0 x 23.0 cm
Description:	Two fragments of glazed earthenware tiles, (a) an end piece with one original border which reveals the original shape of the tile to be arabesque-like, the upper right side curves inward in an arc shape, the outer edge is coloured in an aqua-marine blue with a thin rust-orange border on front side, surface has white ground with deep cobalt blue flowers and delicate stems, green leaves and two rust-orange flowers, the same rust colour is applied as contrast to leaves and blue flowers, the colours have run slightly under the glaze (b) is a corner fragment, too small to distinguish design; colours used are blue green and a dull gold on a white ground, designs are raised and outlined in unglazed clay.
Subject:	architecture decorative arts ceramics
Credit:	Gift of Catharine Robb Whyte, O. C., Banff, 1979
Catalogue Number:	101.02.0008 a,b

Images



This material is presented as originally created; it may contain outdated cultural descriptions and potentially offensive content. [Read more.](#)