



Back Scratcher

<https://archives.whyte.org/en/permalink/artifact103.02.0018>

Title:	Back Scratcher
Date:	1945 – 1960
Material:	wood
Dimensions:	41.0 cm
Description:	A curved, toothed piece of wood at the end of a long carved handle used to scratch inaccessible places of the body. The scratcher is stamped "China".
Subject:	households assistive device
Credit:	Gift of Pearl Evelyn Moore, Banff, 1979
Catalogue Number:	103.02.0018

Images



This material is presented as originally created; it may contain outdated cultural descriptions and potentially offensive content. [Read more.](#)



Buttonhook

<https://archives.whyte.org/en/permalink/artifact103.07.0057%20a%2cb>

Title:	Buttonhook
Date:	1875 – 1910
Material:	metal
Dimensions:	1.9 (widest point) x 20.2 cm
Description:	a) A buttonhook, possibly silver, with a small hook at the end of a long shaft set into a very simple, plain round flattened handle. b) a small, metal shoe-horn with a flared and slightly curved shape.
Subject:	assistive device clothing
Credit:	Gift of Pearl Evelyn Moore, Banff, 1979
Catalogue Number:	103.07.0057 a,b

Images



This material is presented as originally created; it may contain outdated cultural descriptions and potentially offensive content. [Read more.](#)



Buttonhook

<https://archives.whyte.org/en/permalink/artifact103.07.0058>

Title:	Buttonhook
Date:	1875 – 1910
Material:	metal
Dimensions:	3.3 (widest point) x 25.5 cm
Description:	A buttonhook, possibly silver, with a small hook at the end of a long shaft set into a very simple flat handle.
Subject:	assistive device clothing
Credit:	Gift of Pearl Evelyn Moore, Banff, 1979
Catalogue Number:	103.07.0058

Images



This material is presented as originally created; it may contain outdated cultural descriptions and potentially offensive content. [Read more.](#)



Buttonhook

<https://archives.whyte.org/en/permalink/artifact103.07.0061>

Title:	Buttonhook
Date:	1875 – 1910
Material:	metal; ivory or bone
Dimensions:	1.6 (widest point) x 15.1 cm
Description:	A small hook, at the end of a long shaft, set into a plain rounded handle of ivory or bone.
Subject:	assistive device clothing
Credit:	Gift of Pearl Evelyn Moore, Banff, 1979
Catalogue Number:	103.07.0061

Images



This material is presented as originally created; it may contain outdated cultural descriptions and potentially offensive content. [Read more.](#)



Cane

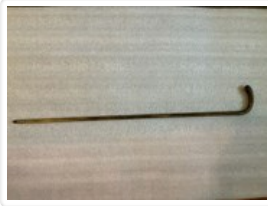
<https://archives.whyte.org/en/permalink/artifact103.08.0096>

Title:	Cane
Date:	1900 – 1950
Material:	grass, bamboo; metal, silver
Dimensions:	87.0 cm
Description:	A simple bamboo cane with a metal tip on the bottom. The bamboo shoot is bent at a right angle to form the cane's handle. There is a silver cap on the end of the handle. The handle of the cane is marked with "Sangster" and silver hallmarks.
Subject:	assistive device social customs
Credit:	Gift of Pearl Evelyn Moore, Banff, 1979
Catalogue Number:	103.08.0096

Images



This material is presented as originally created; it may contain outdated cultural descriptions and potentially offensive content. [Read more.](#)

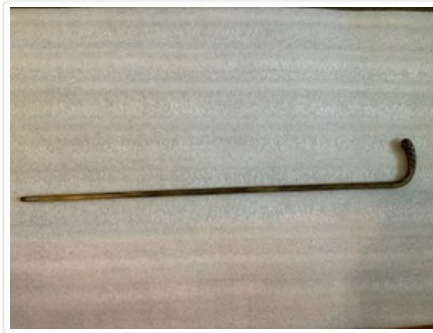


Cane

<https://archives.whyte.org/en/permalink/artifact103.08.0099>

Title:	Cane
Date:	1900 – 1940
Material:	wood; metal
Dimensions:	11.5 x 88.0 cm
Description:	A straight-grained wooden cane with a metal tip. The handle is curved at a right angle to the cane, and has five small metal knobs on each side and a metal spine.
Subject:	assistive device social customs
Credit:	Gift of Pearl Evelyn Moore, Banff, 1979
Catalogue Number:	103.08.0099

Images



This material is presented as originally created; it may contain outdated cultural descriptions and potentially offensive content. [Read more.](#)

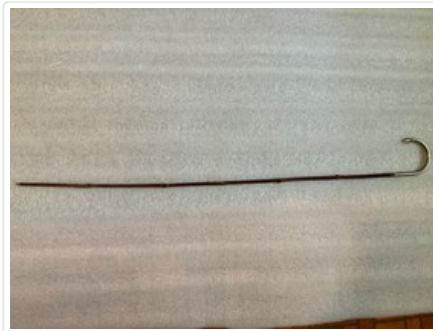


Cane

<https://archives.whyte.org/en/permalink/artifact103.08.0100>

Title:	Cane
Date:	1900 – 1940
Material:	grass, bamboo; metal
Dimensions:	92.0 cm
Description:	A very thin bamboo cane with a curved metal handle.
Subject:	assistive device social customs
Credit:	Gift of Pearl Evelyn Moore, Banff, 1979
Catalogue Number:	103.08.0100

Images



This material is presented as originally created; it may contain outdated cultural descriptions and potentially offensive content. [Read more.](#)



Cane

<https://archives.whyte.org/en/permalink/artifact103.08.0101>

Title:	Cane
Date:	1900 – 1940
Material:	wood; bone; metal
Dimensions:	94.0 cm
Description:	A straight wooden walking stick with a cap of bone at the handle.
Subject:	assistive device social customs
Credit:	Gift of Pearl Evelyn Moore, Banff, 1979
Catalogue Number:	103.08.0101

Images



This material is presented as originally created; it may contain outdated cultural descriptions and potentially offensive content. [Read more.](#)

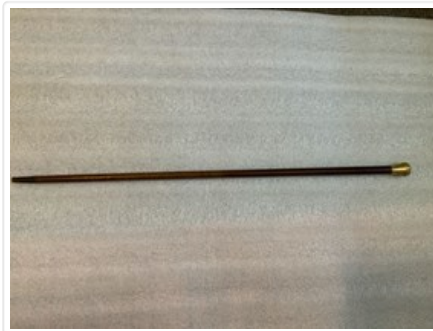


Cane

<https://archives.whyte.org/en/permalink/artifact103.08.0102>

Title:	Cane
Date:	1861 – 1861
Material:	wood; metal, gold; metal, lead
Dimensions:	58.0 cm
Description:	A straight wooden walking stick with gold over lead at the handle. The gold handle is inscribed: "To Henry Moore, token of respect by his employees, Cleveland, May 23, 1861".
Subject:	assistive device social customs Henry Moore
Credit:	Gift of Pearl Evelyn Moore, Banff, 1979
Catalogue Number:	103.08.0102

Images



This material is presented as originally created; it may contain outdated cultural descriptions and potentially offensive content. [Read more.](#)



Cane

<https://archives.whyte.org/en/permalink/artifact103.08.0103>

Title:	Cane
Date:	n.d.
Material:	wood, ebony; metal, silver; fibre
Dimensions:	93.5 cm
Description:	A straight ebony walking stick that is inlaid with silver and wrapped with cord at the handle.
Subject:	assistive device social customs
Credit:	Gift of Pearl Evelyn Moore, Banff, 1979
Catalogue Number:	103.08.0103

Images



This material is presented as originally created; it may contain outdated cultural descriptions and potentially offensive content. [Read more.](#)