



#4 of into the Deep

<https://archives.whyte.org/en/permalink/artifactenm.06.01>

Artist: Maureen Enns (1949 – , Canadian)
Title: #4 of into the Deep
Date: 2000
Medium: acid etched concrete; metal on metal
Dimensions: 60.9 x 60.9 cm
Description: grizzly bear paw print acid etched concrete table
Subject: bear
table
Maureen Enns
Grizzly
Credit: Gift of Maureen Enns, Cochrane, 2010
Catalogue Number: EnM.06.01

Images



This material is presented as originally created; it may contain outdated cultural descriptions and potentially offensive content. [Read more.](#)



Acrylic; Mixed Media Painting

<https://archives.whyte.org/en/permalink/artifactHsL.12.01>

Artist:	Lynne Huras
Title:	Acrylic; Mixed Media Painting
Date:	2009
Medium:	mixed media, mainly acrylic on paper
Dimensions:	22 x 22 cm
Description:	<p>In the centre of the square painting a walking black bear looks down at the ground. Behind the bear is a slope of green trees with a blue mountain beyond, viewer's right. The sky above is grey and the whole scene is bordered in brown. In the top corner, viewer's right, is a paw print on a taupe-coloured background, surrounded by a black square. Printed on the top back of the painting "BLACK BEAR - STUDY/SKETCH (2009)" underneath in script "Lynne Huras", and underneath this "ACRYLIC, ACRYLIC MEDIUM, DRY PASTEL ON PAPER".</p>
Subject:	landscape mountain animal, bear
Credit:	Purchased from Lynne Huras, Banff, 2010
Catalogue Number:	HsL.12.01

Images



This material is presented as originally created; it may contain outdated cultural descriptions and potentially offensive content. [Read more.](#)



Acrylic; Mixed Media Painting

<https://archives.whyte.org/en/permalink/artifactHsL.12.02>

Artist:	Lynne Huras
Title:	Acrylic; Mixed Media Painting
Date:	2009
Medium:	acrylic; mixed media on paper
Dimensions:	22 x 22 cm
Description:	<p>In the centre of the square painting a walking brown and black grizzly bear looks toward viewer's right. Behind him are blue/grey rocks, grey sky and a blue and grey blue mountain beyond, viewer's right. The scene is bordered in dark brown and in the top corner, viewer's left, is a grizzly paw print on a taupe-coloured background, bordered with black. Printed on the top back of the painting "GRIZZLY - STUDY/SKETCH (2009)" underneath in script "Lynne Huras", and underneath this "ACRYLIC, ACRYLIC MEDIUM, DRY PASTEL ON PAPER".</p>
Subject:	<p>landscape</p> <p>mountain</p> <p>animal, grizzly bear</p>
Credit:	Purchased from Lynne Huras, Banff, 2010
Catalogue Number:	HsL.12.02

Images



This material is presented as originally created; it may contain outdated cultural descriptions and potentially offensive content. [Read more.](#)



Animal Figurine

<https://archives.whyte.org/en/permalink/artifact107.02.0031>

Title:	Animal Figurine
Date:	1940 – 1970
Material:	wood; stone
Dimensions:	7.5 x 2.7 x 10.5 cm
Description:	Carved spruce bark bear standing on flat, round rock base. Carved bark layers accentuate form of carving. Bear standing on four legs, has small ears and tail. Facial features carved in and painted as black holes for eyes, and red slash for a mouth. Glued onto oval piece of greyish shale acting as base.
Subject:	households decorative animal bear
Credit:	Gift of Catharine Robb Whyte, O. C., Banff, 1979
Catalogue Number:	107.02.0031

Images



This material is presented as originally created; it may contain outdated cultural descriptions and potentially offensive content. [Read more.](#)



Animal Sculpture

<https://archives.whyte.org/en/permalink/artifact107.02.0047>

Title:	Animal Sculpture
Date:	n.d.
Material:	wood
Dimensions:	9.5 x 5.0 x 18.0 cm
Description:	A sculpture of a bear carved out of light wood. The bear is stretching with its hind legs planted on the ground and front legs stretched out in front of its face. Incised fur and facial details.
Subject:	Whyte home art sculpture bear animal
Credit:	Gift of Catharine Robb Whyte, O. C., Banff, 1979
Catalogue Number:	107.02.0047

Images



This material is presented as originally created; it may contain outdated cultural descriptions and potentially offensive content. [Read more.](#)



Banff and area photographs

<https://archives.whyte.org/en/permalink/descriptions57542>

Part Of:	Luxton family fonds
Description Level:	5 / File
Fonds Number:	LUX
Series:	LUX / I / D : Personal and professional
Sous-Fonds:	LUX / I : Norman Luxton sous-fonds
Sub-Series:	LUX / I / D / 6 : Other activities and interests
Reference Code:	LUX / I / D6c / NA - 18 to NA - 31

GMD: Photograph
Negative

Date Range: [1940-1962]

Physical Description: 14 photographs: b&w negatives; 9.5 x 6 cm or smaller

Scope & Content:
File consists of b&w photograph negatives of unidentified people interacting with black bears in Banff, exteriors of the Indian Trading Post, view from Mount Norquay Lookout, a canyon, and winter scenes.

Name Access: Luxton, Norman

Subject Access: Bears
Bear
Black Bears
Winter
Dogs

Geographic Access: Alberta
Banff
Banff National Park

Title Source: Title based on contents of file

Processing Status: Processed

Images



OrderRemove



OrderRemove



OrderRemove



OrderRemove



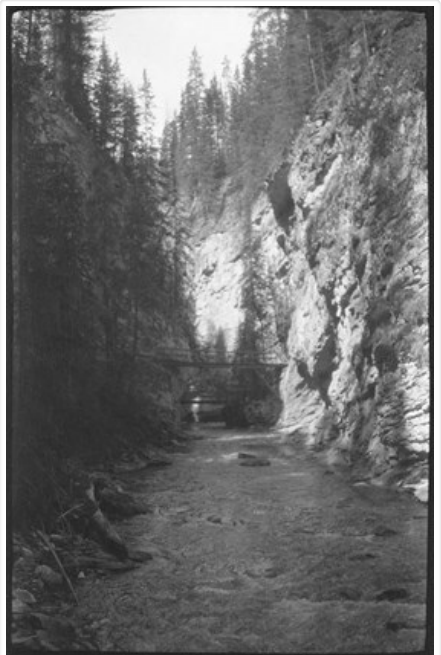
OrderRemove



OrderRemove



OrderRemove



OrderRemove



OrderRemove



OrderRemove



OrderRemove



OrderRemove



OrderRemove



OrderRemove

This material is presented as originally created; it may contain outdated cultural descriptions and potentially offensive content. [Read more.](#)



Banff Minor Hockey album, Jack MacAulay coach

<https://archives.whyte.org/en/permalink/descriptions54413>

Part Of: Kidney family fonds
Description Level: 5 / File
Fonds Number: M74 / V324
Series: V324 / III : Jack MacAulay records
Sous-Fonds: V324
Sub-Series: V324 / IV / C : 1946 - 1980
Accession Number: 2016.8581
Reference Code: V324 / III / B / PD - 1

GMD:	Album
	Photograph
	Photograph print
	Textual record
	Newspaper clipping
Responsibility:	Some images produced by Bruno Engler
Date Range:	1908
	1912
	1926
	1928
	1934
	1938
	1940 - 1943
	[ca. 1950 - ca. 1960]
	1964
	1965
	1970 - 1972
	[ca. 1975]
	1979
Physical Description:	1 album (62 photographs : b&w and col. ; 25 x 20 cm or smaller) -- 2 newspaper clippings -- 1 fabric ribbon
Scope & Content:	<p>File consists of one photograph album containing 62 print photographs [40 b&w, 22 colour] including some in loose envelopes inside album, 2 newspaper clippings and a Banff Minor Hockey green ribbon from 1968. Content pertains to members of the Banff hockey teams who played between 1908 and ca. 1980. Includes group shots of hockey teams in various years, some featuring Jack MacAulay as coach; individual portraits and posed photographs, including Herb MacAulay ca. 1965; print depicting Herb Ollis feeding a bear in 1938; and 2 newspaper clippings from 1979 pertaining to Banff's hockey team. Individuals named in photographs include: Tommy Craig, Axie Wilson, Tommy Anderson, Joe Stenton, Bill Craig, Curly Wheatley, Cyril Paris, Fulton Dunsmore, Ernie Leacock, Mousie Saddington, Johnny Woodworth, Jack Brown, Joe Smith, Gerald Powderface, Clifford Powderface, Charles Powderface, and others.</p>
Notes:	Some prints are annotated on reverse side with date, description, individuals in photographs, etc.
	Negative photographs removed from album [see "Conservation" note]
	Some photographs stamped on reverse side or in envelope attributing work to Bruno Engler
	Album has been placed in sub-sub-series V324 / III / B [date range 1946 - 1980] for the sake of organization as the majority of photographs are dated within or near this range
	Some dates are estimates provided by the Processing Archivist based on context and format

Name Access:	Engler, Bruno Ollis, Herb MacAulay, Jack MacAulay, Herb Craig, Tom Craig, Bill Anderson, Tommy Wilson, Axie Wheatley, Curly Stenton, Joe Paris, Cyril Dunsmore, Fulton Leacock, Ernie Saddington, Mousie Smith, Joe Woodworth, John Brown, Jack Powderface, Charles Powderface, Clifford Powderface, Gerald
Subject Access:	Hockey Sports Bear
Geographic Access:	Canada Alberta Banff
Access Restrictions:	Copyright restrictions may apply
Reproduction Restrictions:	Copyright restrictions may apply
Language:	English
Conservation:	6 negatives originally stored in album have been removed for conservation reasons and will be stored in downstairs vault with other V324 negatives under V324 / IV / C / NA Newspaper clippings have some folding, torn edges and general aging effects, fair condition Newspaper clippings have been left in original position inside album to preserve original order. Consider storing separately if condition deteriorates further
Category:	Sports, recreation and leisure Family and personal life
Title Source:	Title based on contents of file
Processing Status:	Processed

This material is presented as originally created; it may contain outdated cultural descriptions and potentially offensive content. [Read more.](#)



Beaded Necklace

<https://archives.whyte.org/en/permalink/artifact103.01.0051>

Title: Beaded Necklace

Date: 1950 – 1965

Material: skin; plastic; claw

Dimensions: 103. cm

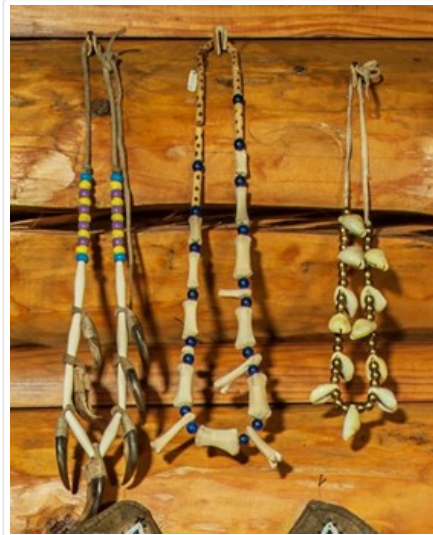
Description: A necklace strung on a buckskin thong, black bear claws and hairpipes alternating on the lowermost portion (when worn), blue, yellow and purple plastic beads in yoke area.

Subject: Indigenous
beadwork
animal
bear
regalia
accessories

Credit: Gift of Catharine Robb Whyte, O. C., Banff, 1979

Catalogue Number: 103.01.0051

Images



This material is presented as originally created; it may contain outdated cultural descriptions and potentially offensive content. [Read more.](#)



Bear

<https://archives.whyte.org/en/permalink/artifactskd.06.02>

Artist:	Daivee Saumik (1925 – 1984, Canadian)
Title:	Bear
Date:	prior to 1962
Dimensions:	11.0 x 6.5 cm
Description:	A green grey stone, bear is standing on very solid legs and feet. His forelegs cover his ears. Carved toes. Incised features , carved ears, whiskers indicated.
Subject:	animal bear
Credit:	Gift of Doreen Hutchinson, Calgary, 1988
Catalogue Number:	SkD.06.02

Images



This material is presented as originally created; it may contain outdated cultural descriptions and potentially offensive content. [Read more.](#)



Bear

<https://archives.whyte.org/en/permalink/artifactunk.06.04>

Artist:	Unknown
Title:	Bear
Date:	later than 1900
Dimensions:	13.0 x 8.0 x 24.0 cm
Description:	A realistic rendering of a walking grizzly bear. His head is turned slightly to the left. Open mouth shows white teeth and a pink tongue.
Subject:	animal, bear grizzly bear
Credit:	Gift of Catharine Robb Whyte, O. C., Banff, 1979
Catalogue Number:	UnK.06.04

Images



This material is presented as originally created; it may contain outdated cultural descriptions and potentially offensive content. [Read more.](#)