



Bas-Relief Wall Hanging

<https://archives.whyte.org/en/permalink/artifact107.02.1043>

Title:	Bas-Relief Wall Hanging
Date:	1978
Material:	plaster; paint; fibre; paint; metal
Dimensions:	16.0 x 23.0 cm
Description:	<p>A piece of cardboard, covered with unbleached woven linen (that has been stapled onto the cardboard) onto which a copy of a ceramic bas-relief (17.5cmx11.5cm wide) from a Mayan temple, has been glued. The bas-relief is of a kneeling woman weaving on a loom tied to a tree trunk. Carved into the ceramic piece "IXCHEL" to the viewer's right, and underneath in the middle "GODDESS of the the MOON and WEAVING".</p>
Subject:	<p>households</p> <p>decorative</p> <p>ceramics</p> <p>Guatemalan</p> <p>Mary Andrews</p>
Credit:	Gift of Mary Garnham Andrews, Banff, 2009
Catalogue Number:	107.02.1043

Images



This material is presented as originally created; it may contain outdated cultural descriptions and potentially offensive content. [Read more.](#)



Bowl

<https://archives.whyte.org/en/permalink/artifact104.20.0904>

Title:	Bowl
Date:	n.d.
Material:	Ceramic
Dimensions:	7.0 x 9.0 x 9.0 cm
Description:	A wide bowl made of white ceramic and glazed with green, blue, and grey glaze with a craquelure pattern. The glaze is thick and raised on the outside rim. There is a small foot that is engraved with "C. Russ[ell?]".
Subject:	Whyte home eating ceramics decor
Credit:	Gift of Catharine Robb Whyte, O. C., Banff, 1979
Catalogue Number:	104.20.0904

Images



This material is presented as originally created; it may contain outdated cultural descriptions and potentially offensive content. [Read more.](#)



Bowl

<https://archives.whyte.org/en/permalink/artifact104.20.0912>

Title:	Bowl
Date:	n.d.
Material:	ceramic
Dimensions:	5.0 x 9.0 x 9.0 cm
Description:	A small ceramic bowl made of brown clay that has been glazed with a shiny brown glaze. The bowl has simple birds painted around the exterior in black. Sides of the bowl curve inward so that the mouth of the bowl is smaller than the diameter. "Lorenzen's" is scratched into the raw clay on the base.
Subject:	Whyte home decor eating ceramics
Credit:	Gift of Catharine Robb Whyte, O. C., Banff, 1979
Catalogue Number:	104.20.0912

Images



This material is presented as originally created; it may contain outdated cultural descriptions and potentially offensive content. [Read more.](#)



Ceramic Tray

<https://archives.whyte.org/en/permalink/artifactrob.22.01>

Artist: Bunny Robinson

Title: Ceramic Tray

Date: n.d.

Medium: clay

Dimensions: 18.0 x 23.5 cm

Description: A shallow dish made of red clay and glazed with a blue glaze applied to the inside and outside, leaving the centre of the dish and edges natural clay. The centre of the dish has a raised relief of a tipi, two horses, a person, and a conifer tree. There is a v-shaped notch in the top edge of the tray and two in the bottom edge. Stamped on the reverse is "BR".

Subject: Trail riders
ceramics
dish

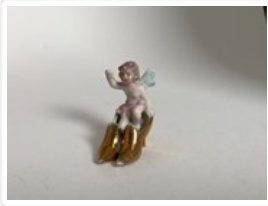
Credit: Gift of Wendy Aitkens, Lethbridge, 2023

Catalogue Number: RoB.22.01

Images



This material is presented as originally created; it may contain outdated cultural descriptions and potentially offensive content. [Read more.](#)



Figurine Statue

<https://archives.whyte.org/en/permalink/artifact107.01.0178>

Title:	Figurine Statue
Date:	n.d.
Material:	ceramic
Dimensions:	4.4 x 1.8 cm
Description:	Small ceramic figurine of a child with wings sitting on a pair of gold shoes. The child has one fist raised. The child has a pink painted skirt, no top, and white wings. The face and hair are painted on. The shoes are a metallic gold.
Subject:	Whyte home ceramics decor
Credit:	Gift of Catharine Robb Whyte, O. C., Banff, 1979
Catalogue Number:	107.01.0178

Images



This material is presented as originally created; it may contain outdated cultural descriptions and potentially offensive content. [Read more.](#)



Finial

<https://archives.whyte.org/en/permalink/artifact101.02.0009>

Title:	Finial
Date:	1700 – 1900
Material:	clay
Dimensions:	5.5 cm
Description:	A small, white clay representation of a conical turret roof, broken off about 2.0 cm below eave, texture of roof contains four rows of vertical, pointed tiles.
Subject:	Whyte home architecture ceramics travel souvenir collectable
Credit:	Gift of Catharine Robb Whyte, O. C., Banff, 1979
Catalogue Number:	101.02.0009

Images



This material is presented as originally created; it may contain outdated cultural descriptions and potentially offensive content. [Read more.](#)

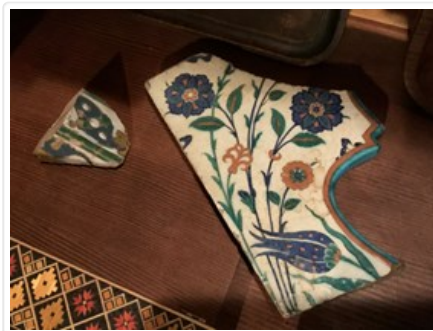


House Tile

<https://archives.whyte.org/en/permalink/artifact101.02.0008%20a%2cb>

Title:	House Tile
Date:	1555 – 1700 (attributed)
Material:	ceramic
Dimensions:	14.5 x 2.0 x 23.0 cm
Description:	Two fragments of glazed earthenware tiles, (a) an end piece with one original border which reveals the original shape of the tile to be arabesque-like, the upper right side curves inward in an arc shape, the outer edge is coloured in an aqua-marine blue with a thin rust-orange border on front side, surface has white ground with deep cobalt blue flowers and delicate stems, green leaves and two rust-orange flowers, the same rust colour is applied as contrast to leaves and blue flowers, the colours have run slightly under the glaze (b) is a corner fragment, too small to distinguish design; colours used are blue green and a dull gold on a white ground, designs are raised and outlined in unglazed clay.
Subject:	architecture decorative arts ceramics
Credit:	Gift of Catharine Robb Whyte, O. C., Banff, 1979
Catalogue Number:	101.02.0008 a,b

Images



This material is presented as originally created; it may contain outdated cultural descriptions and potentially offensive content. [Read more.](#)



Jar

<https://archives.whyte.org/en/permalink/artifact104.19.0116>

Title:	Jar
Date:	n.d.
Material:	ceramic
Dimensions:	10.5 x 10.5 cm
Description:	Lidded ceramic jar covered in dark blue glaze. Rim of jar and inside lip of lid unglazed white clay. Base of jar unglazed white clay with "Robinson" inscribed.
Subject:	Whyte home food storage ceramics decor
Credit:	Gift of Catharine Robb Whyte, O. C., Banff, 1979
Catalogue Number:	104.19.0116

Images



This material is presented as originally created; it may contain outdated cultural descriptions and potentially offensive content. [Read more.](#)



Lidded Pot

<https://archives.whyte.org/en/permalink/artifact104.20.0891>

Title:	Lidded Pot
Date:	n.d.
Material:	ceramic
Dimensions:	16.0 x 18.5 cm
Description:	Lidded ceramic pot with small handles on two sides and handle on lid. White speckled clay covered in brown glaze. Pot narrows at foot. Inner rim of pot, rim of lid, and base of pot unglazed. Lid and pot have swirl pattern. White paper with "Madeline Whittington Lee Creek" written in green pen inside.
Subject:	Whyte home decor food service ceramics
Credit:	Gift of Catharine Robb Whyte, O. C., Banff, 1979
Catalogue Number:	104.20.0891

Images



This material is presented as originally created; it may contain outdated cultural descriptions and potentially offensive content. [Read more.](#)



Miniature Plate

<https://archives.whyte.org/en/permalink/artifact104.20.0816>

Title:	Miniature Plate
Date:	n.d.
Material:	ceramic
Dimensions:	0.3 x 3.3 cm
Description:	Miniature ceramic plate made of white ceramic with a blue and floral motif. The inner surface of the plate is painted blue with an white, yellow, orange, and green floral pattern with a smaller floral pattern around the rim of the plate.
Subject:	ceramics Whyte home miniature decor
Credit:	Gift of Catharine Robb Whyte, O. C., Banff, 1979
Catalogue Number:	104.20.0816

Images



This material is presented as originally created; it may contain outdated cultural descriptions and potentially offensive content. [Read more.](#)