



Animal Figurine Set

<https://archives.whyte.org/en/permalink/artifact107.01.0106%20a%2cb>

Title:	Animal Figurine Set
Date:	1976
Material:	ivory; bean
Dimensions:	1.3 x 0.5 x 1.0 cm
Description:	(a) is a hollowed out, red bean into which rests a stopper in the form of an ivory elephant. Inside the beans lie approximately 100 very miniature elephants enclosed in cellophane. Enclosed in small cardboard box. (b) many very miniature elephants and 1 larger elephant stopper like in (a).
Subject:	Whyte home households decorative miniatures animal elephant
Credit:	Gift of Catharine Robb Whyte, O. C., Banff, 1979
Catalogue Number:	107.01.0106 a,b

Images



This material is presented as originally created; it may contain outdated cultural descriptions and potentially offensive content. [Read more.](#)



Animal Figurine Set

<https://archives.whyte.org/en/permalink/artifact107.01.0115%20a-c>

Title:	Animal Figurine Set
Date:	1976 – 1977
Material:	wood; ivory
Dimensions:	5.5 x 3.2 x 6.5 cm
Description:	Three hand carved elephants, two in red brown wood and one in medium brown wood. All have ivory tusks and inset eyes and are in a walking position with trunks hanging to ground.
Subject:	households decorative miniatures craft carving animal elephant
Credit:	Gift of Catharine Robb Whyte, O. C., Banff, 1979
Catalogue Number:	107.01.0115 a-c

Images



This material is presented as originally created; it may contain outdated cultural descriptions and potentially offensive content. [Read more.](#)



Charm

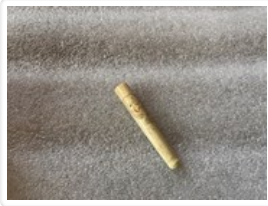
<https://archives.whyte.org/en/permalink/artifact103.01.0124%20a%2cb>

Title:	Charm
Date:	1875 – 1935
Material:	ivory; metal
Dimensions:	2.1 x .7 x)2.1 cm
Description:	Two small, carved, ivory elephants. (a) African (?), squat, thick elephant, with small brass eye screwed into back holding loose brass ring for hanging. Tiny black specks as eyes, ebony? Large ears can be seen carved against shoulders. (b) Indian (?), tall, thin elephant with sloping back. Harness of very fine, twisted bronze wire passes under chest and around neck, and is twisted into small loop on top for hanging. Distinctly carved wrinkles on back, separate tail, and long trunk hanging to ground, small ears, small marks for eyes.
Subject:	Whyte home households adornment animal elephant
Credit:	Gift of Catharine Robb Whyte, O. C., Banff, 1979
Catalogue Number:	103.01.0124 a,b

Images



This material is presented as originally created; it may contain outdated cultural descriptions and potentially offensive content. [Read more.](#)



Cigarette Holder

<https://archives.whyte.org/en/permalink/artifact103.08.0390>

Title:	Cigarette Holder
Date:	1920 – 1940
Material:	ivory
Dimensions:	0.6 x 1.1 x 7.7 cm
Description:	A medium length cigarette holder carved of ivory with drawing of elephant incised on it. Round at end to hold cigarette, tapering slightly and flattening at mouthpiece which has carved ferrule to grip with teeth, small hole drilled through. Incised drawing of elephant around side with eye painted black and mouth painted red. Slight nicotine stains at round end.
Subject:	Whyte home personal accessories fashion travel souvenir households pastime animal elephant
Credit:	Gift of Catharine Robb Whyte, O. C., Banff, 1979
Catalogue Number:	103.08.0390

Images



This material is presented as originally created; it may contain outdated cultural descriptions and potentially offensive content. [Read more.](#)



Decorative Ashtray

<https://archives.whyte.org/en/permalink/artifact102.04.0331>

Title:	Decorative Ashtray
Date:	1960 – 1965
Material:	metal
Dimensions:	2.2 x 9.1 cm
Description:	Slope-sided, small bowl with slightly concave, grey-green base and red interior with grey, circular animal decoration, sun and "HP" on sloped sides.
Subject:	households decorative animal horse elephant
Credit:	Gift of Catharine Robb Whyte, O. C., Banff, 1979
Catalogue Number:	102.04.0331

Images



This material is presented as originally created; it may contain outdated cultural descriptions and potentially offensive content. [Read more.](#)



Desk Set

<https://archives.whyte.org/en/permalink/artifact105.06.0030%20a%2cb>

Title:	Desk Set
Date:	1920 – 1930
Material:	metal; ivory
Dimensions:	2.8 x 2.3 x 23.2 cm
Description:	<p>A letter knife and stamp box of brass enamelled with white and black and a carved ivory elephant atop each. (a) letter knife, plain, double edged, dull, pointed steel blade. Solid brass handle enamelled black on bottom, and black cloisonne outlined with white on top. Carved three dimensional elephant with curled trunk walks atop handle.(b) stamp box rectangular brass box with flat lid enamelled with black cloisanne outlined in white. Carved three dimensional elephant roaring with raised trunk stands atop lid. Lid hinged with piano hinge. Inside of box has slanted bottom separated into three compartments for stamps. Contains one 7 cents Canadian stamp with flying goose.</p>
Subject:	<p>households</p> <p>office</p> <p>hobbies</p> <p>animal</p> <p>elephant</p> <p>miniatures</p>
Credit:	Gift of Catharine Robb Whyte, O. C., Banff, 1979
Catalogue Number:	105.06.0030 a,b

Images



This material is presented as originally created; it may contain outdated cultural descriptions and potentially offensive content. [Read more.](#)



Elephant

<https://archives.whyte.org/en/permalink/artifactnij.03.10>

Artist: James McLaren Nicoll (1892 – 1986, Canadian)
Title: Elephant
Date: prior to 1986
Medium: ink on paper
Dimensions: 14.4 x 20.7 cm
Subject: animal, elephant
Credit: Purchased from Masters Gallery Ltd., Calgary, 1979
Catalogue Number: NiJ.03.10

This material is presented as originally created; it may contain outdated cultural descriptions and potentially offensive content. [Read more.](#)



Elephant

<https://archives.whyte.org/en/permalink/artifactunk.06.68>

Artist:	Unknown
Title:	Elephant
Date:	n.d.
Dimensions:	11.6 x 4.7 x 6.7 cm
Description:	Stylized, simple design elephant carving; pointed ears; trunk hung vertically to ground; tail and legs subtle shaping. Possibly a gift to the Whyte's from Catharine's Concord, Mass. cousin, David Newbury, who was an African Studies student in Uganda c.1968.
Subject:	animal, elephant
Credit:	Gift of Catharine Robb Whyte, O. C., Banff, 1979
Catalogue Number:	UnK.06.68

Images



This material is presented as originally created; it may contain outdated cultural descriptions and potentially offensive content. [Read more.](#)



Identification Tag

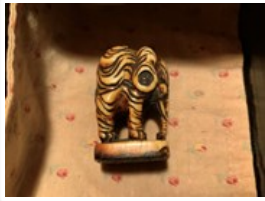
<https://archives.whyte.org/en/permalink/artifact103.09.0056%20a-d>

Title:	Identification Tag
Date:	1914 – 1915
Material:	metal; fibre; ivory
Dimensions:	1.5 (c) x 1.0 (c) x 2.2 (c); 42.0 (d) cm
Description:	A set of two dog tags, one of metal (a), and one of pressboard (b), along with an ivory elephant (c) on a chain (d) to be worn around the neck. The metal dogtag reads "Major Moore 2 Canada, C.I.N.F., BDE, Staff" and the pressboard tag reads "Hd. O.R.S. 6 Inf. BDE. 2 Canadians, Major P.A. Moore, C.O.E.".
Subject:	military animals, elephant
Credit:	Gift of Pearl Evelyn Moore, Banff, 1979
Catalogue Number:	103.09.0056 a-d

Images



This material is presented as originally created; it may contain outdated cultural descriptions and potentially offensive content. [Read more.](#)

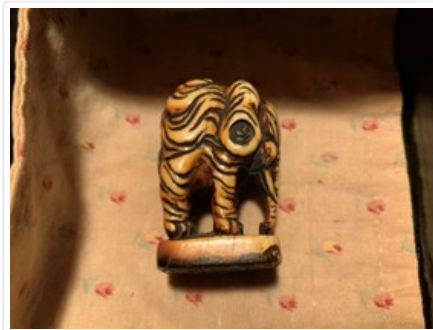


Signet

<https://archives.whyte.org/en/permalink/artifact105.06.0046>

Title:	Signet
Date:	1875 – 1935
Material:	ivory
Dimensions:	3.3 x 1.4 x 2.1 cm
Description:	<p>A small, carved, ivory elephant with deeply incised lines and seal under base. Carved from small block of ivory. Large ears have circular recessed holes at bottom. Deeply incised wrinkles cover body and outlines features. Wavy tail, slanted eyes, carved through between legs and trunk. Stands on .5 cm rectangular pedestal carved with east-Asian characters on the bottom. Dark red substance chop ink, red, staining around seal, ivory very yellow, incised lines very dark.</p>
Subject:	<p>households</p> <p>office</p> <p>miniatures</p> <p>animal</p> <p>elephant</p>
Credit:	Gift of Catharine Robb Whyte, O. C., Banff, 1979
Catalogue Number:	105.06.0046

Images



This material is presented as originally created; it may contain outdated cultural descriptions and potentially offensive content. [Read more.](#)