



Alberta Harvest

<https://archives.whyte.org/en/permalink/artifactwbg.04.005>

Artist: George Weber (1907 – 2002, Canadian)

Title: Alberta Harvest

Date: 1971

Medium: ink on paper

Description: An Alberta harvest scene. In the foreground is an area of wheat that has been cut down in concentric circles. A circular area of wheat has been left standing in the centre of the circles. This field of wheat is a vivid orange and a pale yellow. At the centre-right of the image is a black oil derrick. To the left of the derrick and further in the distance are several grain elevators, of which a few are bright red. In the distance are the Rocky Mountains. A soft grey-blue sky makes up the top portion of the print.

Subject: landscape
prairies
Canadian Rockies
architecture
rural
grain elevators
activity
farming
oil well

Credit: Gift of George Weber, 1973

Catalogue Number: WbG.04.005

This material is presented as originally created; it may contain outdated cultural descriptions and potentially offensive content. [Read more.](#)



Animal Toy

<https://archives.whyte.org/en/permalink/artifact108.05.0003>

Title:	Animal Toy
Date:	1890 – 1910
Material:	skin; metal; glass; metal
Dimensions:	17.5 x 8.0 x 26.0 cm
Description:	<p>A very true replica of a Jersey milk cow with tan and white coloured suede stretched over the carved wooden shape of a cow. The cow has wooden hooves and teats on the udder, with glass eyes, and hair at the end of the tail. The cow has a leather collar with a small round cowbell. The cow moos when its head is turned.</p>
Subject:	<p>industries, farming</p> <p>toys</p> <p>children</p> <p>animals, cow</p>
Credit:	Gift of Pearl Evelyn Moore, Banff, 1979
Catalogue Number:	108.05.0003

Images



This material is presented as originally created; it may contain outdated cultural descriptions and potentially offensive content. [Read more.](#)



Cowbell

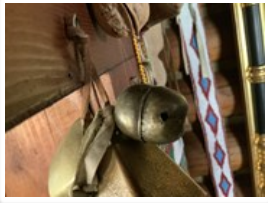
<https://archives.whyte.org/en/permalink/artifact104.03.3001>

Title:	Cowbell
Date:	prior to 1970
Material:	metal
Dimensions:	16.0 x 7.0 x 12.2 cm
Description:	Brass chamber and strap keeper with steel clapper.
Subject:	industry, farming animals
Credit:	Gift of Catharine Robb Whyte, O. C., Banff, 1979
Catalogue Number:	104.03.3001

Images



This material is presented as originally created; it may contain outdated cultural descriptions and potentially offensive content. [Read more.](#)

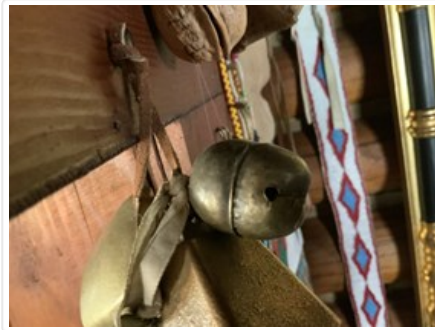


Cowbell Bell, Animal

<https://archives.whyte.org/en/permalink/artifact104.03.0001>

Title:	Cowbell Bell, Animal
Date:	1885 – 1910
Material:	metal, brass
Dimensions:	19.0 x 9.0 x 15.0 cm
Description:	A round brass bell made from a sheet of metal that has been bent and riveted into shape along the sides. The bell has a loop handle at the top.
Subject:	industry dairy farming
Credit:	Gift of Pearl Evelyn Moore, Banff, 1979
Catalogue Number:	104.03.0001

Images



This material is presented as originally created; it may contain outdated cultural descriptions and potentially offensive content. [Read more.](#)



Cowbell Bell, Animal

<https://archives.whyte.org/en/permalink/artifact104.03.0002>

Title:	Cowbell Bell, Animal
Date:	1885 – 1940
Material:	metal, brass
Dimensions:	6.0 x 3.7 x 4.9 cm
Description:	A brass bell that is cast in the shape of a truncated pyramid with a lug on top for hanging. There are bent metal eyes through the lug. The clapper is made of a single, heavy, piece of metal that hangs from a hook inside at the top.
Subject:	industry dairy farming
Credit:	Gift of Pearl Evelyn Moore, Banff, 1979
Catalogue Number:	104.03.0002

Images



This material is presented as originally created; it may contain outdated cultural descriptions and potentially offensive content. [Read more.](#)

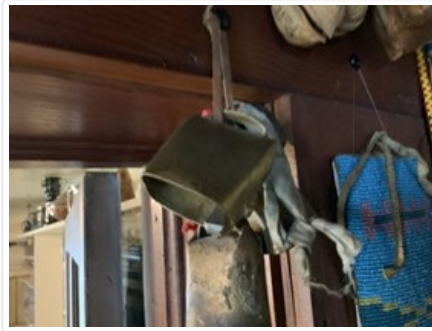


Cowbell Bell, Animal

<https://archives.whyte.org/en/permalink/artifact104.03.0003>

Title:	Cowbell Bell, Animal
Date:	1885 – 1940
Material:	metal, brass
Dimensions:	4.5 x 2.7 x 4.6 cm
Description:	A square, flattened, bell that is folded at the top. The bell is made from one sheet of metal folded into shape with a small loop handle at the top. The bell is riveted and braised on both sides. The bell's clapper is a single light piece of metal that hangs from a large loop inside at the top.
Subject:	industry dairy farming
Credit:	Gift of Pearl Evelyn Moore, Banff, 1979
Catalogue Number:	104.03.0003

Images



This material is presented as originally created; it may contain outdated cultural descriptions and potentially offensive content. [Read more.](#)



Cowbell Bell, Animal

<https://archives.whyte.org/en/permalink/artifact104.03.0004>

Title:	Cowbell Bell, Animal
Date:	1885 – 1910
Material:	metal, brass
Dimensions:	8.0 x 3.5 x 4.0 cm
Description:	A long cylindrical brass bell made from a single sheet of metal that has been cut, folded and braised together at sides to form shape. There is a flat loop handle at the top of the bell. A rolled light metal clapper hangs from a hook inside the bell at the top.
Subject:	industry dairy farming Pearl Moore John Brewster
Credit:	Gift of Pearl Evelyn Moore, Banff, 1979
Catalogue Number:	104.03.0004

Images



This material is presented as originally created; it may contain outdated cultural descriptions and potentially offensive content. [Read more.](#)



Crate

<https://archives.whyte.org/en/permalink/artifact110.01.1038%20a-f>

Title:	Crate
Date:	1950 – 1980
Material:	wood; paper
Description:	Six wooden boxes with no lids. Each crate has a different label.
Subject:	households advertising farming agriculture
Credit:	Gift of Douglas Hare, Banff, 1993
Catalogue Number:	110.01.1038 a-f

This material is presented as originally created; it may contain outdated cultural descriptions and potentially offensive content. [Read more.](#)



English Plough Horses

<https://archives.whyte.org/en/permalink/artifactdmn.02.02>

Artist:	Norah Drummond-Davies (1862 – 1949, Canadian)
Title:	English Plough Horses
Date:	n.d.
Medium:	oil on masonite
Dimensions:	24.8 x 35.5 cm
Description:	General colour: brown. Central image is two horses, (one white, one brown) pulling a plough (man walks behind) towards the left side of the picture. In the upper right corner is a large tree and some bush. On the left side is more woods and sky beyond.
Subject:	landscape animal, horse figure male farming
Credit:	Gift of Robert Peyto, Shawnigan Lake, 1967
Catalogue Number:	DmN.02.02

Images



This material is presented as originally created; it may contain outdated cultural descriptions and potentially offensive content. [Read more.](#)



Gang Ranch

<https://archives.whyte.org/en/permalink/descriptions55863>

Part Of: Douglas Leighton fonds
Description Level: 5 / File
Fonds Number: M133
V222
Series: V222 / III : Specific trips and Events
Sous-Fonds: V222
Sub-Series: V222 / III / A : Gang Ranch
Accession Number: 2020.24
Reference Code: V222 / III / A / 1 / NS - 1 to 200
GMD: Transparency
Photograph
Date Range: 1987 - 1989
Physical Description: 200 photographs : col. slides ; 35 mm
History /
Biographical:

For more history on the Gang Ranch see "<https://gangranch.ca/gang-ranch-history/>"

Scope & Content:

Files consist of photographs taken at the Gang Ranch in British Columbia. photographs include domestic shots of food preparation, scenic views, and irrigation installation.

Name Access: Leighton, Douglas
Subject Access: Gang Ranch,
Ranch
Geographic Access: British Columbia
Chilcotin region
Language: English
Creator: Douglas Leighton
Category: Ranch
Farming
Title Source: Title based on contents of file
Processing Status: Processed

This material is presented as originally created; it may contain outdated cultural descriptions and potentially offensive content. [Read more.](#)