



Iceland, April 1999

<https://archives.whyte.org/en/permalink/artifactnac.18.01>

Artist: Catherine Nadia

Title: Iceland, April 1999

Date: 1999

Medium: photograph on paper

Description: A colour photograph of snow covered waterfalls in Iceland. In the middle of the photograph the waterfalls fall toward the right of the image. In the top left corner the lake or body of water is higher than it is in the bottom right corner. The waterfalls create this difference in height. In the centre right of the image two people are standing on a snow-covered outcrop looking out over the waterfalls. Two more people are on a rock ledge below the top of the outcrop. The people are dwarfed by the waterfalls. In the top right corner a snow covered area across from the waterfalls makes a wall and appears to form a chasm or channel with the waterfalls in the top of the image.

Subject: landscape

waterfall

figure

Iceland

Credit: Gift of Catherine Nadia, Canmore, 2000

Catalogue Number: NaC.18.01

Images



This material is presented as originally created; it may contain outdated cultural descriptions and potentially offensive content. [Read more.](#)

Sacrifice

<https://archives.whyte.org/en/permalink/artifactpoj.13.01>

Artist: Jane Ash Poitras (1951 – , Canadian)

Title: Sacrifice



Date: 1999

Medium: mixed media on canvas

Dimensions: 122.0 x 91.5 cm

Description: Down the centre of the piece there is a column of four historical photographs of Indigenous people participating in the sundance ritual. Different colours and patterns border each photograph on either side of them. On each side of the piece there are painted areas or strips. Red paint looks like blood running down the image. A quill is attached to the painting in the top left corner. A bone or tooth is attached to the canvas in the top right corner. The left side of the piece is painted in red tones, the left in green. In the bottom right corner there are some pictograph-like drawings of people and a dog.

Subject: figure
group
historical
cultural
Indigenous
religious
Sundance Ceremony

Credit: Purchased from Jane Ash Poitras, Edmonton, 2001

Catalogue Number: PoJ.13.01

Images



This material is presented as originally created; it may contain outdated cultural descriptions and potentially offensive content. [Read more.](#)



Brothers

<https://archives.whyte.org/en/permalink/artifacttht.02.01>

Artist:	Tserang Thundrup (1964 – , Tibetan)
Title:	Brothers
Date:	1999
Medium:	oil on canvas
Description:	<p>A portrait of two children; a boy of about 9 or 10 years of age holds a very young child. The older boy's head is bent slightly as he looks directly at the viewer. He wears a red and green bead necklace. The baby he is holding is facing toward him so that only the side of its face is visible. He appears to be trying to grab the older boy's necklace. Both boys are wrapped in a sheepskin coat or blanket. The children are visible only from the waist up. Behind them is a flat grassland area. In the top left corner in the distance is a building which could be a temple.</p>
Subject:	<p>figure</p> <p>children</p> <p>landscape</p> <p>Tibetan plains</p>
Credit:	Purchased from Tserang Thundrup, Lhasa, China, 2001
Catalogue Number:	ThT.02.01

Images



This material is presented as originally created; it may contain outdated cultural descriptions and potentially offensive content. [Read more.](#)



Parade

<https://archives.whyte.org/en/permalink/artifactdot.02.01>

Artist: Tsering Dorjee (1948 – , Tibetan)

Title: Parade

Date: 1996

Medium: oil on canvas

Description: A full length portrait of Tibetan Bhuddist monks or priests. All are dressed in red and gold ceremonial robes. The man at the right of the painting has his eyes closed. His arm is extended and he holds an ornate tray or bowl which the man on the left is pouring water into from an ornate ewer. The man in the middle has a moustache and looks directly at the viewer. An image of a Bhuddist deity is visible in the dark behind the man on the left and the man in the middle.

Subject: figure
group
religious
Tibetan Bhuddism

Credit: Purchased from Tsering Dorjee, Lhasa, Tibet, 2001

Catalogue Number: DoT.02.01

Images



This material is presented as originally created; it may contain outdated cultural descriptions and potentially offensive content. [Read more.](#)



The New World

<https://archives.whyte.org/en/permalink/artifactiss.04.01>

Artist: Sophia Isajiw (1964 – , American)

Title: The New World

Date: 1996

Medium: ink on paper

Dimensions: 57.0 x 76.5 cm

Description: In the background of the image there are a group of men behind a wire fence. These men are being held in an internment camp. The men are wearing hats and are displayed in black and white. In the foreground in the colour brown is a side view of a man and beside it is the same man with a hat on from the front view. The images in the back can be seen threw the larger images in the foreground. In the cc the word Kripak is written in a pale light brown color.

Subject: figure
group
male
historical
internment camp
landscape
Canadian Rockies

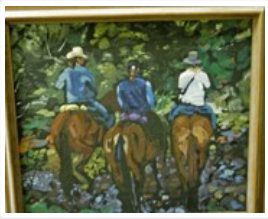
Credit: Purchased from Sophia Isajiw, Turlock, USA, 1996

Catalogue Number: IsS.04.01

Images



This material is presented as originally created; it may contain outdated cultural descriptions and potentially offensive content. [Read more.](#)



Three Companeros

<https://archives.whyte.org/en/permalink/artifactchk.02.01>

Artist: Ken Christopher (1942 – , Canadian)

Title: Three Companeros

Date: 1994

Medium: oil on canvas

Dimensions: 42.0 x 48.0 cm

Description: Within the image frame of this painting there are three horses with three people sitting on horseback. The three figures are female and are centered. The background area is full of trees and the bottom area around the ground is brown in colour. The three horses and riders are facing away from the viewer and are riding off through the forest. The horses are brown. One of the riders has a white shirt or jacket and another has a light colour hat.

Subject: animal
horses
landscape
forest
activity
trail riding
figure
group
female

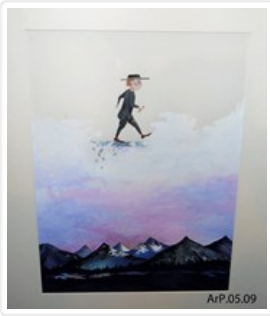
Credit: Gift of Robert Blair, Calgary, 1996

Catalogue Number: ChK.02.01

Images



This material is presented as originally created; it may contain outdated cultural descriptions and potentially offensive content. [Read more.](#)



Trusting

<https://archives.whyte.org/en/permalink/artifactarp.05.09>

Artist: Patricia Askren (1951 – , American)

Title: Trusting

Date: 1993

Medium: watercolour on paper

Dimensions: 43.2 x 30.5 cm

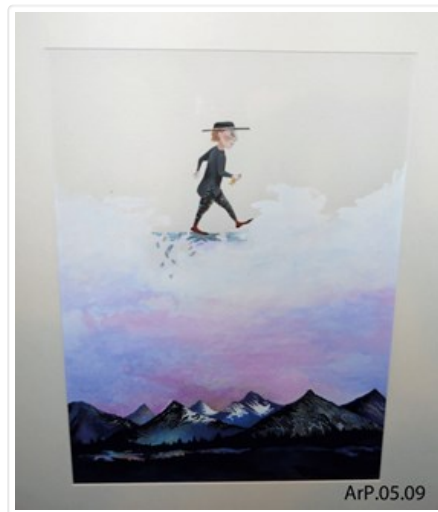
Description: A figure dressed in a black hat, black blouse, printed black pants, red socks, black shoes is at centre top, walking on grey crumbling blocks. Below and in the foreground is a range of peaked mountains, dark colours of blue, purple and some green with some snow cover on centre mountains. A row of black trees lines a lake in the foreground, splashes of colour reflect in the lake. The sky has red, purple tones fading to white at the top.

Subject: landscape
mountains
mythological
figure

Credit: Gift of Patricia Askren, Lakonias, Greece, 1993

Catalogue Number: ArP.05.09

Images



This material is presented as originally created; it may contain outdated cultural descriptions and potentially offensive content. [Read more.](#)



Emergence

<https://archives.whyte.org/en/permalink/artifacthdd.02.01>

Artist:	Dan Hudson (1959 – , Canadian)
Title:	Emergence
Date:	1990
Medium:	oil on canvas
Dimensions:	160.0 x 160.0 cm
Description:	<p>In the center of the painting there is a white outline of a nude male figure. The face down figure has one arm outstretched in front and the other outstretched to the side. Off set to the lower left a bit, is the same male again but this time with his body painted in black, white and purple. Also in the same area there is a wolf leaning down to get a drink of water and directly beneath that wolf is his reflection that looks like another wolf. Both wolves are purple with white highlights. At the top left corner there is a ring of fire, orange and red in colour. The background behind the above mentioned is black and the paint has been applied very thick (almost impasto in some places). The frame for the canvas is made out of natural wood poles and the ends stick out at each corner and cross over each other.</p>
Subject:	<p>figure</p> <p>male</p> <p>animal</p> <p>wolf</p> <p>mythological</p>
Credit:	Gift of Dan Hudson, Canmore, 1993
Catalogue Number:	HdD.02.01

This material is presented as originally created; it may contain outdated cultural descriptions and potentially offensive content. [Read more.](#)

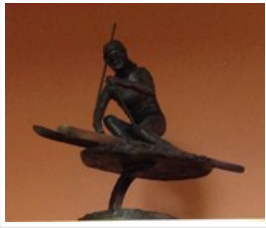


Rink

<https://archives.whyte.org/en/permalink/artifactsnj.04.29>

Artist:	John Harold Thomas Snow (1911 – 2004, Canadian)
Title:	Rink
Date:	1987
Medium:	coloured lithograph on paper
Dimensions:	53.0 x 71.5 cm
Description:	An outdoor ice rink with wooden boards; white fields, mountains on horizon; blue sky with some clouds; spectators line the boards; 7 fully uniformed players, 3 with red and yellow uniforms; 4 with blue and yellow uniforms; the goal with goalie is near top centre.
Subject:	activity, hockey winter figure, group
Credit:	Gift of John Harold Thomas Snow, Calgary, 1990
Catalogue Number:	SnJ.04.29

This material is presented as originally created; it may contain outdated cultural descriptions and potentially offensive content. [Read more.](#)



Winning the Gold

<https://archives.whyte.org/en/permalink/artifactohh.06.01>

Artist: Harry Francis O'Hanlon (1916 – 1996, Canadian)

Title: Winning the Gold

Date: 1987

Dimensions: 39.5 x 34.0 cm

Description: A female racer in full speed around a pole, realistically rendered in full racing garb and style. The figurine is 21.0 high on an oval base which itself is raised from the base with a single curved arm ca. 10.0 high x ca. 1.5. The bronze base is ca. 2.0 thick and sits on an oval wooden base 2.0 thick; the bases are irregular oval shaped.

Subject: activity

winter

skiing

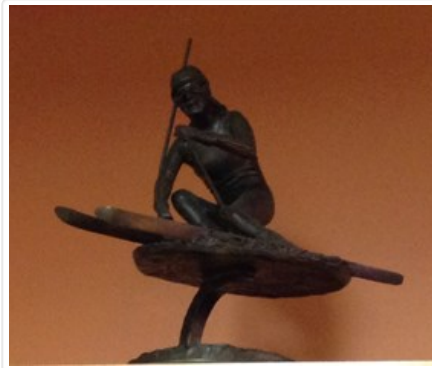
figure

female

Credit: Gift of Harry Francis O'Hanlon, Calgary, 1990

Catalogue Number: OhH.06.01

Images



This material is presented as originally created; it may contain outdated cultural descriptions and potentially offensive content. [Read more.](#)