



Figure Studies

<https://archives.whyte.org/en/permalink/artifactmoe.03.044>

Artist:	Edmee Moore (1908 – 1971, Canadian)
Title:	Figure Studies
Date:	1924 – 1932
Medium:	graphite on paper
Dimensions:	31.6 x 48.1 cm
Description:	Figure study of female dressed in harem pants and top with headwear. Two studies on front, standing figure on left and seated figure with crossed legs on right.
Subject:	figure still life;
Credit:	Gift of Pearl Evelyn Moore, Banff, 1979
Catalogue Number:	MoE.03.044

Images



This material is presented as originally created; it may contain outdated cultural descriptions and potentially offensive content. [Read more.](#)



Figure Studies

<https://archives.whyte.org/en/permalink/artifactmoe.03.045>

Artist:	Edmee Moore (1908 – 1971, Canadian)
Title:	Figure Studies
Date:	1924 – 1932
Medium:	graphite on paper
Dimensions:	31.6 x 48.1 cm
Description:	Figure study of older figure and young child. Left study - older figure seated and young child standing beside holding hand (?) with older figure. Right Study - older figure seated and young child seated on lap, facing left.
Subject:	figure still life
Credit:	Gift of Pearl Evelyn Moore, Banff, 1979
Catalogue Number:	MoE.03.045

Images



This material is presented as originally created; it may contain outdated cultural descriptions and potentially offensive content. [Read more.](#)



Figure Studies

<https://archives.whyte.org/en/permalink/artifactmoe.03.046>

Artist:	Edmee Moore (1908 – 1971, Canadian)
Title:	Figure Studies
Date:	1924 – 1932
Medium:	graphite on paper
Dimensions:	30.2 x 45.5 cm
Description:	Three figure studies of nude woman in various positions. Left figure - lunging with right foot and hand covering head bent down. Middle figure - top centre, seated position, almost cross legged. Right figure - bottom right, standing position.
Subject:	figure still life
Credit:	Gift of Pearl Evelyn Moore, Banff, 1979
Catalogue Number:	MoE.03.046

Images



This material is presented as originally created; it may contain outdated cultural descriptions and potentially offensive content. [Read more.](#)



Figure Studies

<https://archives.whyte.org/en/permalink/artifactmoe.03.047>

Artist:	Edmee Moore (1908 – 1971, Canadian)
Title:	Figure Studies
Date:	1924 – 1932
Medium:	graphite on paper
Dimensions:	30.1 x 45.5 cm
Description:	A single figure study of male, unfinished. Figure appears to be partially seated with left leg up. Relatively centred in the paper.
Subject:	figure still life
Credit:	Gift of Pearl Evelyn Moore, Banff, 1979
Catalogue Number:	MoE.03.047

Images



This material is presented as originally created; it may contain outdated cultural descriptions and potentially offensive content. [Read more.](#)



Figure Studies

<https://archives.whyte.org/en/permalink/artifactmoe.03.048>

Artist:	Edmee Moore (1908 – 1971, Canadian)
Title:	Figure Studies
Date:	1924 – 1932
Medium:	graphite; charcoal on paper
Dimensions:	30.1 x 45.5 cm
Description:	Figure studies of woman. Front - partially finished sketch of reclining woman, head resting on right hand. Back - quick sketch of standing woman, barely sketched.
Subject:	figure still life
Credit:	Gift of Pearl Evelyn Moore, Banff, 1979
Catalogue Number:	MoE.03.048

Images



This material is presented as originally created; it may contain outdated cultural descriptions and potentially offensive content. [Read more.](#)

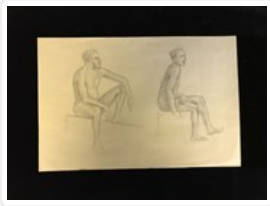


Figure Studies

<https://archives.whyte.org/en/permalink/artifactmoe.03.049>

Artist: Edmee Moore (1908 – 1971, Canadian)

Title: Figure Studies

Date: 1924 – 1932

Medium: graphite on paper

Dimensions: 30.1 x 45.5 cm

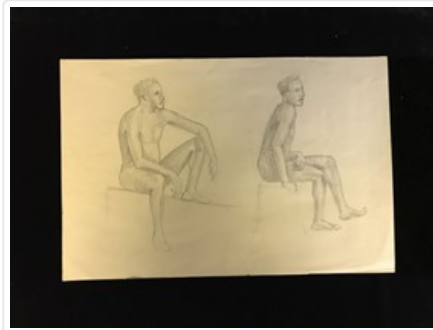
Description: Three figure studies of a man. Front - two figure studies: left figure is seated on a block (?) with right leg bent and rested on block and arms draped loosely on knee and leg; right figure is seated on a chair (?) right leg crossed over, right hand in lap and left hand on chair. Both are facing towards the right. Back - single figure standing on left side of paper and facing towards the right.

Subject: figure
still life

Credit: Gift of Pearl Evelyn Moore, Banff, 1979

Catalogue Number: MoE.03.049

Images



This material is presented as originally created; it may contain outdated cultural descriptions and potentially offensive content. [Read more.](#)



Figure Studies

<https://archives.whyte.org/en/permalink/artifactmoe.03.050>

Artist: Edmee Moore (1908 – 1971, Canadian)

Title: Figure Studies

Date: 1924 – 1932

Medium: graphite; charcoal on paper

Dimensions: 30.2 x 45.5 cm

Description: Multiple figure studies of woman. Front - two studies: left figure is standing with left hand on an object and right hand touching underneath chin; right figure is seated, faced away from viewer, left leg crossed underneath right leg with right hand touching left foot. TLC faint drawing of hand with the thumb and forefinger are touching. Back - three studies: left figure is standing with arms raised behind head, holding something (?); centre figure unfinished and scribbled over; right figure partially finished is seated. Dated "March/28".

Subject: figure

still life

Credit: Gift of Pearl Evelyn Moore, Banff, 1979

Catalogue Number: MoE.03.050

Images



This material is presented as originally created; it may contain outdated cultural descriptions and potentially offensive content. [Read more.](#)



Figure Studies

<https://archives.whyte.org/en/permalink/artifactmoe.03.051>

Artist:	Edmee Moore (1908 – 1971, Canadian)
Title:	Figure Studies
Date:	1924 – 1932
Medium:	graphite on paper
Dimensions:	30.2 x 45.5 cm
Description:	Multiple figure studies. Front - three figures on various standing position: left figure is lightly shaded, standing facing looking down towards the right, with arms behind the back; centre figure is outlined and partially finished, similar position to the left figure; right figure is lightly shaded, left arm behind the back and right arm across abdomen. Back - two figures: main/central figure is drawn in portrait-wise, standing with left arm raised above head and right raised to chest, partially shaded with graphite and orange colour; left figure is lightly shaded, standing with left hand on hip and right arm across abdomen. A faint outline of fingers TRC by arm of central figure.
Subject:	figure still life
Credit:	Gift of Pearl Evelyn Moore, Banff, 1979
Catalogue Number:	MoE.03.051

Images



This material is presented as originally created; it may contain outdated cultural descriptions and potentially offensive content. [Read more.](#)



Figure Studies

<https://archives.whyte.org/en/permalink/artifactmoe.03.052>

Artist:	Edmee Moore (1908 – 1971, Canadian)
Title:	Figure Studies
Date:	1924 – 1932
Medium:	graphite; on paper
Dimensions:	30.2 x 45.5 cm
Description:	Four figure studies of woman. Front - two figures standings, left figure is lightly shaded, standing with right arm bent with hand under chin resting on left arm that is across the abdomen, figure is facing towards the left; right figure is standing back to viewer, left hand is reaching back to rest on something. Dated "March 19/28" Back - two figures, left figure is partially unfinished, standing but bent over holding left knee, facing towards the left; right figure is lightly shaded and seated, left arm is bent above the head reaching towards block (?) behind figure, left leg is bent cross legged with right leg straight.
Subject:	figure still life
Credit:	Gift of Pearl Evelyn Moore, Banff, 1979
Catalogue Number:	MoE.03.052

Images



This material is presented as originally created; it may contain outdated cultural descriptions and potentially offensive content. [Read more.](#)



Figure Studies

<https://archives.whyte.org/en/permalink/artifactmoe.03.053>

Artist:	Edmee Moore (1908 – 1971, Canadian)
Title:	Figure Studies
Date:	1924 – 1932
Medium:	graphite; charcoal on paper
Dimensions:	30.2 x 45.5 cm
Description:	Three figure studies. Front - two figures seated, left figure is partially shaded, seated on an object with both hands resting on the object, faint sketch behind the left figure (possibly erased?), facing the right; right figure is partially shaded with darker shadows, right hand is resting underneath chin and left hand is rested on leg, facing towards the right. Back - very light outline of figure, portrait-wise on the paper, appears to be seated.
Subject:	figure still life
Credit:	Gift of Pearl Evelyn Moore, Banff, 1979
Catalogue Number:	MoE.03.053

Images



This material is presented as originally created; it may contain outdated cultural descriptions and potentially offensive content. [Read more.](#)