

## Research Collections



### Miniature; Model Teepee

<https://archives.whyte.org/en/permalink/artifact101.01.1001>

Title:	Miniature; Model Teepee
Date:	c. 1955
Material:	skin; wood; hair
Dimensions:	80.0 cm
Description:	A beautiful tepee model made of untanned hide. Well constructed, tent poles attached to hide covered hoop, seems to be constructed true to scale, has tent door and flap, two horsehair tassles on top poles. Painted red, yellow and brown. Animals depicted running around middle of structure.
Subject:	building model hobbies Jack Fuller
Credit:	Gift of Mary Shaw, Banff, 1987
Catalogue Number:	101.01.1001

### Images



This material is presented as originally created; it may contain outdated cultural descriptions and potentially offensive content. [Read more.](#)

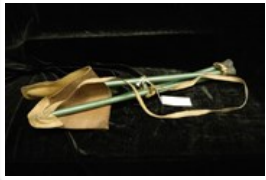


## Miniature; Model Teepee

<https://archives.whyte.org/en/permalink/artifact101.01.1003>

Title:	Miniature; Model Teepee
Date:	1970 – 1989
Material:	fibre; wood; skin
Dimensions:	75.0 cm
Description:	A crudely made canvas teepee with poles attached to a hooden hoop. The canvas has red and black painting on it. A line of red fabric is sewn on top.
Subject:	building model hobbies Trail Riders of the Canadian Rockies
Credit:	Gift of Patricia Wilson, Calgary, 1989
Catalogue Number:	101.01.1003

This material is presented as originally created; it may contain outdated cultural descriptions and potentially offensive content. [Read more.](#)

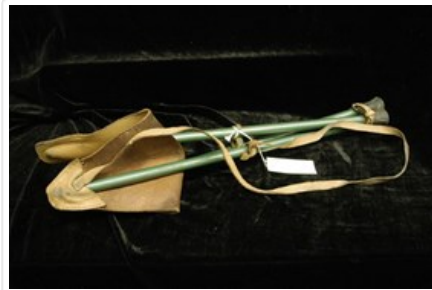


## Tripod Stool

<https://archives.whyte.org/en/permalink/artifact102.03.1020>

Title:	Tripod Stool
Date:	1930 – 1960
Material:	metal; skin; rubber
Description:	Three hollow tubes 50.5 cm long form the legs for the tripod stool. Bolted together near the middle each has a rubber cup on the end and at the top spread out into the pockets of a three cornered leather seat. A leather strap with metal buckle is screwed onto a leg near the bottom to keep the legs together when not in use. A long thin leather strap is attached at the middle and one corner of the seat for carrying.
Subject:	hobbies artists Walter Phillips painting
Credit:	Gift of James Helmer, 1997
Catalogue Number:	102.03.1020

## Images



This material is presented as originally created; it may contain outdated cultural descriptions and potentially offensive content. [Read more.](#)



## Stamp Box

<https://archives.whyte.org/en/permalink/artifact102.04.1009>

Title:	Stamp Box
Date:	1890 – 1920
Material:	wood
Dimensions:	5.3 x 9.4 x 10.1 cm
Description:	cottonwood box made by George Paris,; small rectangular box formed on base of rough slab wood, with similar slab forming lid, 2 edges of each wood slab retain tree bark, swirly grain of wood accented by high glossy varnish, piece of wood glued to underside of lid to hold in place on box
Subject:	households art hobbies Paris, George
Credit:	Gift of Cyril Paris, Banff, 1968
Catalogue Number:	102.04.1009

## Images



This material is presented as originally created; it may contain outdated cultural descriptions and potentially offensive content. [Read more.](#)

## Picture Frame

<https://archives.whyte.org/en/permalink/artifact102.04.1010%20a-e>

Title:	Picture Frame
Date:	1900 – 1930
Material:	wood; metal; glass
Description:	5 rustic cottonwood frames (made by George Paris?), 2 tall wood slabs cut obliquely top and bottom with bark left on sides, oval hole cut through to frame recess for photo, metal screw eye at top for hanging, swirly grain accented by varnish, (a) 30.7 x 8.5 x 1.5 - "Banff" pencilled on back, remnants of tape, (b) 32.5 x 10.5 x 1.5 - paper pasted on back "... Her loveliness I never knew/Until she smiled on me: ... Coleridge"
Subject:	hobbies art George Paris
Credit:	Gift of Cyril Paris, Banff, 1970
Catalogue Number:	102.04.1010 a-e

### Images



This material is presented as originally created; it may contain outdated cultural descriptions and potentially offensive content. [Read more.](#)



## Embroidered Table Runner

<https://archives.whyte.org/en/permalink/artifact102.04.1030>

Title:	Embroidered Table Runner
Date:	1910 – 1940
Material:	fibre
Dimensions:	40.0 x 113.0 cm
Description:	A long, ecru-coloured, linen table runner. It has a symmetrical design, cut work and embroidery.
Subject:	households needlework hobbies Mary Schaffer
Credit:	Gift of Charles C. Reid, Banff, Alberta, 1986
Catalogue Number:	102.04.1030

### Images



This material is presented as originally created; it may contain outdated cultural descriptions and potentially offensive content. [Read more.](#)



## Bookend

<https://archives.whyte.org/en/permalink/artifact102.04.1032>

Title:	Bookend
Date:	1900 – 1930
Material:	wood; metal
Dimensions:	9.5 x 6.5 x 27.5 cm
Description:	Base of bookend is 22.7 long, two pieces on the ends slide out to 43.7. The ends fold down. The face of the base and backs of the ends are decorated with inlaid wood and painting. Base has a mythical creature, the ends have birds along with urns and flowers.
Subject:	households hobbies Mary Schaffer
Credit:	Gift of Charles C. Reid, Banff, Alberta, 1986
Catalogue Number:	102.04.1032

## Images



This material is presented as originally created; it may contain outdated cultural descriptions and potentially offensive content. [Read more.](#)



## Cushion Cover

<https://archives.whyte.org/en/permalink/artifact102.04.1047>

Title:	Cushion Cover
Date:	1890 – 1910
Material:	fibre
Dimensions:	63.0 cm
Description:	Centre piece 47.0 square, 2.5 of solid material around the outside, inside of square is of pulled thread work with French knot embroidery. Outside of square are 8.5 gathered strips hemstitched around the edges, edge is 73.0 long and 8.5 wide. All very fine hand work.
Subject:	households furnishings hobbies Annie White
Credit:	Gift of Clifford J. White, Victoria, 1994
Catalogue Number:	102.04.1047

## Images



This material is presented as originally created; it may contain outdated cultural descriptions and potentially offensive content. [Read more.](#)





## Table Mat

<https://archives.whyte.org/en/permalink/artifact102.04.1060>

Title:	Table Mat
Date:	1910 – 1960
Material:	fibre
Description:	Circular hooked table mat with scene of two houses and trees. Various colours, faded on front, more intense on back.
Subject:	households needlework hobbies crafts
Credit:	Gift of Dorothy Cranstone, Banff, 1992
Catalogue Number:	102.04.1060

## Images



This material is presented as originally created; it may contain outdated cultural descriptions and potentially offensive content. [Read more.](#)



## Handknit Stocking

<https://archives.whyte.org/en/permalink/artifact103.03.1061%20a%2cb>

Title:	Handknit Stocking
Date:	prior to 1930
Material:	fibre; metal
Dimensions:	13.5 x 36.5 cm
Description:	One stocking in the making. Very fine knitting, needles are 1.0 mm thick. Ribbed at the top, which would be below the knee, it narrows at the ankle, heel is turned, and the knitting stops half way to the toes, needles intact. (b) 52.0 long and 12.0 wide at opening, this is a long stocking shaped tube of fine cotton, however there is no indication for a heel.
Subject:	households clothing hobbies needlework knitting Mary Schaffer
Credit:	Gift of Charles C. Reid, Banff, Alberta, 1986
Catalogue Number:	103.03.1061 a,b

## Images



This material is presented as originally created; it may contain outdated cultural descriptions and potentially offensive content. [Read more.](#)