

All that glitters : a climber's journey through addiction and depression

<https://archives.whyte.org/en/permalink/catalogue14894>

Author: Talbot, Margo
Responsibility: Margo Talbot
Publisher: Winlaw, B.C. : Sono Nis Press
Published Date: 2011
Physical Description: 191 p. : ill., ports.
Medium: Library - Book (including soft-cover and pamphlets)
Subjects: Biography
Talbot, Margo
Ice
Arctic
ISBN: 9781550391824
Accession Number: AC609
Call Number: G512 T35
Collection: Alpine Club of Canada Library

This material is presented as originally created; it may contain outdated cultural descriptions and potentially offensive content. [Read more.](#)



Alpine mixed cragging in the Canadian Rockies

<https://archives.whyte.org/en/permalink/catalogue13607>

Author: Owens, Rob
Physical Description: p.32-37 : ill
Medium: Library - Book (including soft-cover and pamphlets)
Subjects: Ice climbing
Notes: In Gripped, vol.10, no. 4 (August / September 2008)
Call Number: P
Collection: Alpine Club of Canada Library

This material is presented as originally created; it may contain outdated cultural descriptions and potentially offensive content. [Read more.](#)



Athabasca Glacier

<https://archives.whyte.org/en/permalink/artifactwyp.01.103>

Artist:	Peter Whyte (1905 – 1966, Canadian)
Title:	Athabasca Glacier
Date:	1940 – 1960
Medium:	oil on canvas
Dimensions:	30.5 x 25.5 cm
Description:	Colour: blue greys. The central image is a mass of blue grey ice which takes up the middle two quarters. The upper and lower quarters being white patches of snow on a brown grey ground.
Subject:	landscape mountain Canadian Rockies lake ice snow glacier
Credit:	Gift of Catharine Robb Whyte, O. C., Banff, 1968
Catalogue Number:	WyP.01.103

Images



This material is presented as originally created; it may contain outdated cultural descriptions and potentially offensive content. [Read more.](#)



[Athabasca Ice Caves - Jasper N.P.]

<https://archives.whyte.org/en/permalink/catalogue21548>

Responsibility: Surveyed November 1969 by M.C. Brown, S. Brown, and R. McGimm.
Compiled by P.L. Smart, drawn at University of Alberta for Canadian Karst Research Group

Medium: Library - Maps and blueprints (unannotated; published)
Map

Subjects: Athabasca Ice Cave - Jasper N.P.

Notes: Total length 1059 feet. Entrance elevation 6,500 feet. The cave is excavated entirely in ice at the snout of the Athabasca Glacier. Most of it has now collapsed and is dangerous to enter."

Accession Number: 1461

Call Number: C16-1.1(b)

Collection: Archives Library

This material is presented as originally created; it may contain outdated cultural descriptions and potentially offensive content. [Read more.](#)



The Backyard Rink

<https://archives.whyte.org/en/permalink/artifactevl.04.02>

Artist: Linda Evans (1949 – , Canadian)

Title: The Backyard Rink

Date: 1987

Medium: ink on paper

Dimensions: 42.0 x 58.0 cm

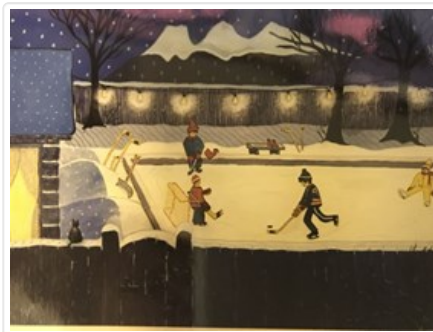
Description: It is dusk and winter in the mountains. In the foreground is a fence with a willow tree to the right. There is a cat perched on the fence watching the children in the background playing hockey. There is a house with a lighted window to the left. A string of lights from the house across the yard illuminates the ice rink which dominates the middle right. Three boys are playing hockey and a girl in a yellow snowsuit is sitting on the ice. Trees and mountains are in the background.

Subject: landscape
mountain
tree
winter ice rink
children
activity, ice hockey
animal, cat
architecture

Credit: Gift of Linda Evans, Canmore, 1993

Catalogue Number: EvL.04.02

Images



This material is presented as originally created; it may contain outdated cultural descriptions and potentially offensive content. [Read more.](#)



[Baffin Island, Barnes Ice Cap 27E/2W] District of Franklin, Northwest Territories

<https://archives.whyte.org/en/permalink/catalogue23464>

Publisher:	Department of Mines and Technical Surveys
Published Date:	1964
Physical Description:	1 map : black and white
Scale:	Scale: 1:50,000 Relief: Contour intervals
Medium:	Library - Maps and blueprints (unannotated; published) Map
Subjects:	Baffin Island, Barnes Ice Cap District of Franklin, Northwest Territories
Notes:	National Topographic System Arctic provisional map
Accession Number:	7000
Call Number:	NTS 37E/2W
Collection:	Archives Library

This material is presented as originally created; it may contain outdated cultural descriptions and potentially offensive content. [Read more.](#)



[Baffin Island, Barnes Ice Cap 37E/2E] District of Franklin, Northwest Territories

<https://archives.whyte.org/en/permalink/catalogue23462>

Publisher:	Department of Mines and Technical Surveys
Published Date:	1964
Physical Description:	1 map : black and white
Scale:	Scale: 1:50,000 Contour intervals
Medium:	Library - Maps and blueprints (unannotated; published) Map
Subjects:	Baffin Island, Barnes Ice Cap District of Franklin, Northwest Territories
Notes:	National Topographic System Arctic provisional map
Accession Number:	7000
Call Number:	NTS 37E/2E
Collection:	Archives Library

This material is presented as originally created; it may contain outdated cultural descriptions and potentially offensive content. [Read more.](#)



[Baffin Island, Barnes Ice Cap 37E/2W] District of Franklin, Northwest Territories

<https://archives.whyte.org/en/permalink/catalogue23463>

Publisher:	Department of Mines and Technical Surveys
Published Date:	1964
Physical Description:	1 map : black and white
Scale:	Scale: 1:50,000 Relief: Contour intervals
Medium:	Library - Maps and blueprints (unannotated; published) Map
Subjects:	Baffin Island, Barnes Ice Cap District of Franklin,, Northwest Territories
Notes:	National Topographic System Arctic Provisional map
Accession Number:	7000
Call Number:	NTS 37E/2W
Collection:	Archives Library

This material is presented as originally created; it may contain outdated cultural descriptions and potentially offensive content. [Read more.](#)



[Baffin Island, Barnes Ice Cap 37E/3E] District of Franklin, Northwest Territories

<https://archives.whyte.org/en/permalink/catalogue23465>

Publisher:	Department of Mines and Technical Surveys
Published Date:	1964
Physical Description:	1 map : black and white
Scale:	Scale: 1:50,000 Relief: Contour intervals
Medium:	Library - Maps and blueprints (unannotated; published) Map
Subjects:	Baffin Island, Barnes Ice Cap District of Franklin, Northwest Territories
Notes:	National Topographic System
Accession Number:	7000
Call Number:	NTS 37E/3E
Collection:	Archives Library

This material is presented as originally created; it may contain outdated cultural descriptions and potentially offensive content. [Read more.](#)



[Baffin Island, Bieler Lake West, Barnes Ice Cap 37E/7E] District of Franklin, Northwest Territories

<https://archives.whyte.org/en/permalink/catalogue23469>

Publisher:	Department of Mines and Technical Surveys
Published Date:	1964
Physical Description:	1 map : black and white
Scale:	Scale: 1:50,000 Relief: Contour intervals
Medium:	Library - Maps and blueprints (unannotated; published) Map
Subjects:	Baffin Island, Bieler Lake West, Barnes Ice Cap District of Franklin, Northwest Territories
Notes:	National Topographic System
Accession Number:	7000
Call Number:	NTS 37E/7E
Collection:	Archives Library

This material is presented as originally created; it may contain outdated cultural descriptions and potentially offensive content. [Read more.](#)