



### Money isn't everything. A survival manual for nonprofit organizations.

<https://archives.whyte.org/en/permalink/catalogue20298>

Author: Fisher, John  
Publisher: Toronto : Management and Fund Raising Centre  
Published Date: (c1977)  
Physical Description: x, 213p. illus. diagr.  
Medium: Library - Book (including soft-cover and pamphlets)  
Subjects: Associations, institutions, etc.  
Organizations  
Notes: Located in Gallery office  
Includes bibliography  
Accession Number: 2862  
Call Number: N420 F5  
Location: Art Library is located in Curatorial Department - Please contact Curatorial Department for access  
Collection: Art Library

This material is presented as originally created; it may contain outdated cultural descriptions and potentially offensive content. [Read more.](#)



## Dish

<https://archives.whyte.org/en/permalink/artifact104.20.1136>

Title:	Dish
Date:	1890 – 1920
Material:	ceramic
Dimensions:	2.4 x 14.2 x 20.4 cm
Description:	White oval dish with a band of sunflowers and waterlilies against a scalloped green background. In the centre of the decoration on one side there is an oval-shaped belt with "SANITARIUM HOTEL" on the belt and "BANFF" in the centre. The underside of the dish is marked with a crest and "PORCELAINE OPAQUE TRADE MARK BRIDGWOOD & SON. ENGLAND SUPPLIED BY W.O. REID & CO. LONDON & WINNIPEG."
Subject:	institutions Banff Sanitarium Dr. Brett households souvenirs
Credit:	Gift of Bertha Verkuil Davis, Calgary, 2003
Catalogue Number:	104.20.1136

## Images



This material is presented as originally created; it may contain outdated cultural descriptions and potentially offensive content. [Read more.](#)

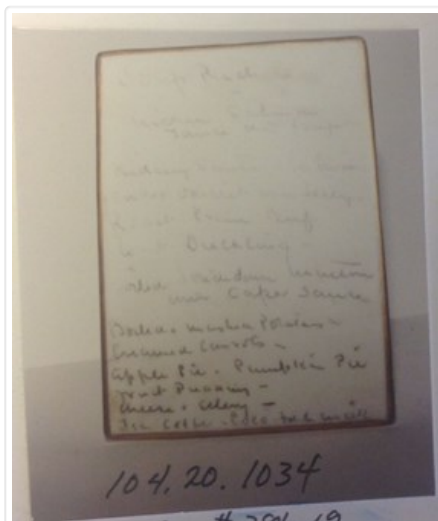


## Menu Stand

<https://archives.whyte.org/en/permalink/artifact104.20.1034>

Title:	Menu Stand
Date:	1900 – 1920
Material:	ceramic
Dimensions:	12.5 x 9.0 cm
Description:	Gold trimmed china menu stand, white china rectangular plate with gold trim, a china brace 5.5x5.5x3.3 centre back resembles flowers enables the plate to stand with a slight angle to display menu. Hand written in pencil, menu: "Soup Richeleiu/Chicken SalmonSauce a ____Kidney Saute a la Parisian/ Sweet Omelet with Jelly/ Roast PrimeBeef/ Roast Duckling/ Boiled Sori??down Mutton with caper sauce/ Boiled &mashed Potatoes/ Creamed carrots/ Apple Pie - Pumpkin Pie/ Fruit Pudding - Cheese & celery - Tea Coffee Coco with milk".
Subject:	Dr R G Brett institutions Brett Sanitarium
Credit:	Gift of Mr. and Mrs. Norman Tabuteau, Banff, 1966
Catalogue Number:	104.20.1034

## Images



This material is presented as originally created; it may contain outdated cultural descriptions and potentially offensive content. [Read more.](#)



## Book Case

<https://archives.whyte.org/en/permalink/artifact105.02.1049>

Title:	Book Case
Date:	1918
Material:	wood; glass; metal; skin
Description:	Mounted, glass covered book case, leather covered book, patterned fabric lined, ivory coloured. Cover has all metal inscriptions: ribbon-shape centre top: "The Alpine Club of Canada", oval insignia 4.6 x 2.8, ram's head and ACC. Single brass letters centered: "Members War Record 1914-1918", copper plates each side 12.8 x 5.0 with ice pick and rope. Silver coloured rope over bottom copper plate 9.0 x 21.5, centered on this plate a wreath 6.0 x 6.3 with "SIC ITVR AD ASTRA" inside. Mounted on oak base 57.0 x 46.5 c 6.0, glass walls 11.2 x .5 thick. 16.5 long brass rods through corners of glass go through base to tighten with wing nuts.
Subject:	institutions Alpine Club of Canada ACC World War I
Credit:	Gift of Alpine Club of Canada, Canmore, 1973
Catalogue Number:	105.02.1049

## Images



This material is presented as originally created; it may contain outdated cultural descriptions and potentially offensive content. [Read more.](#)



## Identification Sign

<https://archives.whyte.org/en/permalink/artifact105.05.1004>

Title:	Identification Sign
Date:	1930 – 1970
Material:	wood
Dimensions:	96.0 x 148.0 cm
Description:	Wooden sign, Warden Service, Equipment Building, routed wooden sign. Centre top oval 40.0 x 21.0 has a carved beaver on a log. "Warden Service Warden Building Banff National Park". Braced on the back with 3 pieces of wood. Metal 30.5 x 8.0 screwed on 2 outer pieces for hanging.
Subject:	parks Wardens institutions Banff National Park
Credit:	Gift of Joe A. Brewster, Banff, 1980
Catalogue Number:	105.05.1004

This material is presented as originally created; it may contain outdated cultural descriptions and potentially offensive content. [Read more.](#)



## Vase

<https://archives.whyte.org/en/permalink/artifact102.04.1008>

Title: Vase

Date: 1890 – 1910

Material: ceramic

Dimensions: 12.2 cm

Description: white and green, ex Banff Sanitarium Hotel, white, band of sunflowers and waterlilies against scalloped green background, "Sanitarium Hotel/Banff" written in crest (belt in oval shape stamped on shoulder above band, small simple shape with slightly ribbed sides and high shoulders closing in to wide mouth and small undulating lip, trademark crest stamped on base noting it is "porcelain opaque"

Subject: institutions

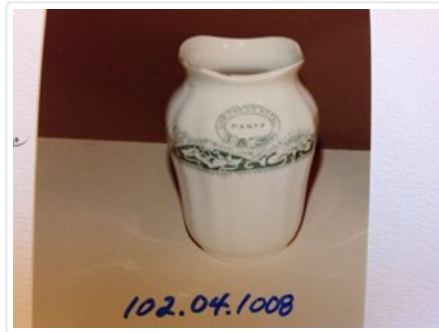
Banff Sanitarium

Dr. Brett

Credit: Gift of Forrest (Pat) Oliver Brewster, Banff, 1966

Catalogue Number: 102.04.1008

## Images



This material is presented as originally created; it may contain outdated cultural descriptions and potentially offensive content. [Read more.](#)



## Picture

<https://archives.whyte.org/en/permalink/artifact105.02.1090>

Title:	Picture
Date:	1950 – 1960
Material:	wood; paper
Description:	Banff Avenue postcard on wood. Crosscut piece of wood, 1.0 wide, bark intact. Postcard of Cascade Mountain and Banff Avenue pasted on face, sides and top painted in, trees and clouds, tlc "Cascade Mtn. and Banff Ave. Banff"
Subject:	souvenirs institutions Banff Cascade Mountain
Credit:	Purchased from Alan McClelland, Banff, 1985
Catalogue Number:	105.02.1090

## Images



This material is presented as originally created; it may contain outdated cultural descriptions and potentially offensive content. [Read more.](#)



## T-Shirt

<https://archives.whyte.org/en/permalink/artifact103.05.1087>

Title:	T-Shirt
Date:	1989
Material:	fibre
Dimensions:	56.0 x 80.0 cm
Description:	Yellow, Banff Festival of Mountain Films, ordinary short sleeve t-shirt; silkscreened on front in black, blue and hot pink showing mountains and film strip with "Banff Festival of Mountain Films" and "Banff Centre for Management", film strip curls around the mountains, also shown are three climbers.
Subject:	events Banff Festival of Mountain Films institutions Banff Centre
Credit:	Gift of Banff Festival of Mountain Films, Banff, 1989
Catalogue Number:	103.05.1087

## Images



This material is presented as originally created; it may contain outdated cultural descriptions and potentially offensive content. [Read more.](#)





## T-Shirt

<https://archives.whyte.org/en/permalink/artifact103.05.1079>

Title:	T-Shirt
Date:	1989
Material:	fibre
Dimensions:	19.0 x 30.0 cm
Description:	Baby's Own, newborn baby's shirt, white cotton t-shirt, black lettering on front: "I was born at Banff Mineral Springs Hospital", a bugling elk's head with baby in sling hanging from its antlers, label with "Baby's Own" with washing instructions, 9 kg--20 lbs..
Subject:	Institutions Banff Mineral Springs Hospital
Credit:	Gift of Women's Auxiliary to Mineral Springs Hospital, Banff, 1990
Catalogue Number:	103.05.1079

## Images



This material is presented as originally created; it may contain outdated cultural descriptions and potentially offensive content. [Read more.](#)



## T-Shirt

<https://archives.whyte.org/en/permalink/artifact103.05.1082>

Title:	T-Shirt
Date:	1976
Material:	fibre
Dimensions:	41.0 x 67.0 cm
Description:	Blue, "Sunshine Skinners", chicken body with goat head, ordinary blue t-shirt with black lettering: "Sunshine Skinners", picture of chicken body with goat head standing on tire with large treads, signed "Jan Andrews".
Subject:	<div>lodges</div> <div>Sunshine Village</div> <div>institutions</div> <div>Brewster Transport</div> <div>Jan Andrews</div>
Credit:	Gift of Kathy Jost, Banff, 1986
Catalogue Number:	103.05.1082

## Images



This material is presented as originally created; it may contain outdated cultural descriptions and potentially offensive content. [Read more.](#)