





## Bowl; Soup Set

<https://archives.whyte.org/en/permalink/artifact104.20.0367%20a-d>

Title:	Bowl; Soup Set
Date:	1870 – 1935
Material:	ceramic
Dimensions:	3.5 x 18.2 cm
Description:	Transparent glaze with cobalt decoration. Exterior of each has floral scroll and 4 interiors vary. (a) hills, river, village bB) 3 porters with baggage and 2 passengers (c) figures with screens by shoreline (d) winter scene with temple in background - this is only plate with signature, gold lustre, on bottom.
Subject:	Whyte home travel souvenir keepsake collectables households Edith Morse Robb Edward S. Morse
Credit:	Gift of Catharine Robb Whyte, O. C., Banff, 1979
Catalogue Number:	104.20.0367 a-d

## Images



This material is presented as originally created; it may contain outdated cultural descriptions and potentially offensive content. [Read more.](#)



## Coin

<https://archives.whyte.org/en/permalink/artifact109.03.0004%20a%2cb>

Title:	Coin
Date:	1900 – 1920
Material:	metal
Dimensions:	0.1 x 2.1 cm
Description:	Two round brass coins with square holes in middle; smooth, raised border around edges with raised frame around square hole, and textured background on rest of coin; one side, curvilinear script only on two sides of the square raised slightly above the background; other side square blocks of linear symbols on all four sides of hole and raised slightly, with the letters "CT" forming the lower part of the block to the right of the square hole.
Subject:	Whyte homecoins collectables keepsake travel souvenir
Credit:	Gift of Catharine Robb Whyte, O. C., Banff, 1979
Catalogue Number:	109.03.0004 a,b

## Images



This material is presented as originally created; it may contain outdated cultural descriptions and potentially offensive content. [Read more.](#)

Image  
not  
available

## Coin & Currency Collection

<https://archives.whyte.org/en/permalink/artifact109.03.0005>

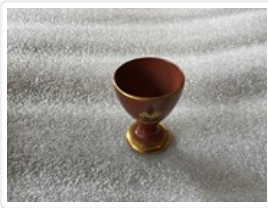
Title:	Coin & Currency Collection
Date:	1894 – 1930
Material:	metal; paper

Description:	<p>A collection of 34 foreign coins and 6 bills from around the world: coins:3 Canadian one cent (.2 x 2.6) - copper; 1899 - Queen Victoria, 1910 - Edward VII, 1916 - George V. U.S. one cent (.2 x 2.0) - copper; Lincoln head penny; 1910, 3a 1920, 1925, 2a 1928. U.S. ten cent (.1 x 1.9) - silver; Liberty head dime; 1918. 1 Italian five centesimi (.2 x 2.0) - copper; Vittorio Emmanuele III; 1928. 6 Italian ten centesimi (.2 x 2.3) - copper; Vittorio Emanuele III: 2a 1921, 1923, 1924, 1929, 1930. 4 Philippine one centavo (.2 x 2.5) - copper; U.S. shield and eagle; 2a 1926 2a 1928. 1 Settlement one cent (.2 x 2.8) - copper; Queen Victoria; 1885 (Note: very worn); 1 Indian one rupee (.2 x 3.2) - silver; Edward VII; 1906. 2 Ceylon ten cents (.1 x 1.6) - silver; 1894 - Queen Victoria (Note: very worn, 1920 - George V. Egyptian ten milliemmes (.2 x 2.5) - silver; Arabic script with centre hole; 1917. 4 Japanese coins - (.2 x 2.4) - copper; three-blossomed floral symbol. Japanese coin (.2 x 2.3) - silver; imperial chrysanthemum and centre hole (.1 x 1.9) - silver, as above, but smaller. Chinese (?) coin (.1 x 1.9) - silver; bald, mustached man in uniform. Paper currency: 1 Canadian one dollar bill (17.8 x 8.5) - green both sides; George V portrait; 1923; serial number, "S-618038". 2 Ceylon one rupee bills (11.2 x 6.4) - green and pink one side, blue other; 1929; serial numbers, 41228, and 86550. 2 Chinese twenty cents bills (10.2 x 5.5) - brown one side, blue other; 1925; serial numbers C291825, and D192280. 1 Chinese ten cents bill (9.5 x 5.3) - blue one side, brown other; 1925; serial number E062033. 34 coins, 6 bills</p>
Subject:	<p>Whyte home collectables travel souvenir keepsake memories</p>
Credit:	Gift of Catharine Robb Whyte, O. C., Banff, 1979
Catalogue Number:	109.03.0005

## Images



This material is presented as originally created; it may contain outdated cultural descriptions and potentially offensive content. [Read more.](#)



## Cordial Glass

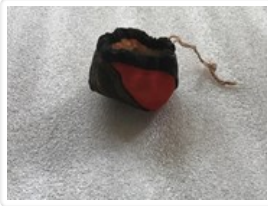
<https://archives.whyte.org/en/permalink/artifact104.20.0345>

Title:	Cordial Glass
Date:	1870 – 1890
Material:	ceramic
Dimensions:	5.6 x 4.4 cm
Description:	Thrown terra cotta with transparent glaze with black over glaze enamel and gold lustre. Design possibly stamped on, consists of gold rim and base. Gold border under leaf design which contains Arabic writing. Gold stamp on outside and stamped on bottom. Chipped bottom 0.7 cm. long by 0.5 cm. wide.
Subject:	Whyte home travel souvenir keepsake gift accessories households Edith M. Robb
Credit:	Gift of Catharine Robb Whyte, O. C., Banff, 1979
Catalogue Number:	104.20.0345

## Images



This material is presented as originally created; it may contain outdated cultural descriptions and potentially offensive content. [Read more.](#)



## Doll's Purse

<https://archives.whyte.org/en/permalink/artifact103.08.0416>

Title:	Doll's Purse
Date:	1870 – 1890
Material:	fibre
Description:	Patchwork fabric, drawstring purse. Multi coloured and patterned fabric hand sewn together, natural coloured lining. 3 strands of light coloured string loosely woven together is the drawstring.
Subject:	Whyte home travel accessories souvenir keepsake collectable miniatures Japanese Edward S. Morse Edith Morse Robb
Credit:	Gift of Catharine Robb Whyte, O. C., Banff, 1979
Catalogue Number:	103.08.0416

## Images



This material is presented as originally created; it may contain outdated cultural descriptions and potentially offensive content. [Read more.](#)



## Fraternal Key

<https://archives.whyte.org/en/permalink/artifact103.09.0130%20a%2cb>

Title:	Fraternal Key
Date:	1856 – 1860
Material:	metal
Dimensions:	0.4 x 2.1 x 4.0 cm
Description:	Two, gold, Kappa Alpha honorary keys. Flat, thin, diamond shape with short, round, shaft holding hanging ring at top point, and longer round shaft at bottom point. Diamond shaped surfaces engraved both sides. Front bears two concentric rings with "KA" (Kappa Alpha) at centre, and a series of Greek letters around the outer ring. Outside the circles, in the left corner is a "7", in the right a "J". The reverse contains another ring with a banner at the top containing a name. At middle is a vague sketch of a box like structure with rays radiating from it. Below is a wreath containing "C.C.". Outside the ring in the left corner is a globe ? , and in the right, a circle of stars, the tubular, round shaft at the bottom is hollow at the end and contains a square keyhole. (b) hanging ring at the top turns, and banner contains the name "Patrick Robb" (a) banner contains name "P. Robb".
Subject:	Whyte home personal accessories keepsake organizations Kappa Alpha Patrick Robb
Credit:	Gift of Catharine Robb Whyte, O. C., Banff, 1979
Catalogue Number:	103.09.0130 a,b

## Images



This material is presented as originally created; it may contain outdated cultural descriptions and potentially offensive content. [Read more.](#)

## Hair Ornament



<https://archives.whyte.org/en/permalink/artifact103.01.0199%20a-j>

**Title:** Hair Ornament

**Date:** 1870 – 1890

**Material:** metal; fibre; plastic; coral; ivory

**Dimensions:** 18.2 cm

**Description:** Assorted Japanese hair pins and combs, all Kanzashi (a) red-coloured comb shaped into a half circle, 11.61x5.6, fine teeth. Spine is decorated by 3-D white fabric peonies with green leaves and gold-coloured thread winding around the spine. The thread covers old-coloured circles and silver-coloured flowers.(b) white ivory tine forms hair pin , 14.01 x 6.0, decorative twisted wire and springs attached to orange coloured pieces of metal form decoration at top of pin. (c) silver coloured hair pin, 16.61 x 2.0, single tine extending to gold coloured flower at top with one gold coloured and one silver coloured leaf.(d) white ivory hair pin with single tine, 14.51 x 3.5. Decoration at top of tine is a red and white fabric flower with two green leaves as well as three additional small round flowers. (e) hair pin with a single black plastic tine, 17.01 x 1.8. Fabric rabbit attached to the top of the tine by a small spring.(f) hair pin with a single black plastic tine, 17.01 x 1.8. Fabric rabbit attached to the top of the tine by a small spring. (g) hair pin with ivory tine, 13.11 x 2.3. Fabric Japanese man attached to tine by a small green wire. (h) rectangular yellow plastic comb, 7.31 x 2.4.(i) rectangular blue coloured paper and red fabric, 5.01 x 1.3. hair pin with a single black plastic tine, 17.01 x 1.8. Fabric rabbit attached to the top of the tine by a small spring.(j) silver coloured hair pin ,18.21 x 2.0, double tined pin with decorative 'scrolls' from which small rectangular dangles are attached at top of pin. Ear cleaner extends from top of decoration.

**Subject:** Whyte home  
households  
adornment  
Japanese  
E. S. Morse  
accessories  
styling  
fashion  
keepsake

**Credit:** Gift of Catharine Robb Whyte, O. C., Banff, 1979

**Catalogue Number:** 103.01.0199 a-j

## Images





This material is presented as originally created; it may contain outdated cultural descriptions and potentially offensive content. [Read more.](#)



## Miniature Dresser

<https://archives.whyte.org/en/permalink/artifact105.02.0121>

Title:	Miniature Dresser
Date:	1870 – 1890
Material:	wood; plastic
Dimensions:	10.5 x 10.0 x 4.4 cm
Description:	<p>Japanese dresser, rectangular shaped dresser with three drawers, 4.11 x 1.9h x 4.1w, arranged one on top of the other on the upper left hand side of the dresser, each drawer pulls out. Beside the drawers on the right hand side of the dresser is a picture framed in wood, 6.4h x 4.9w , design is two pink flowers on gold coloured stems on green triangular background, 4.0h, the remainder of the design area is filled with white circles painted onto red leaves on an orange background. Pull out drawer at bottom of dresser, 2.5h x 4.01 x 9.7w. Front of drawer has scroll shaped cutout framing plastic covered picture of one pink flower with gold coloured leaves on green background to right of picture and white circles painted onto red leaves on orange background to left of picture. Back of dresser has a round hole, 1.5 dia, 1.9 from bottom to push out bottom drawer.</p>
Subject:	<p>Whyte home</p> <p>households</p> <p>miniatures</p> <p>Japanese</p> <p>Edward S. Morse</p> <p>Edith Morse Robb</p> <p>travel</p> <p>souvenir</p> <p>keepsake</p>
Credit:	Gift of Catharine Robb Whyte, O. C., Banff, 1979
Catalogue Number:	105.02.0121

## Images



This material is presented as originally created; it may contain outdated cultural descriptions and potentially offensive content. [Read more.](#)



## Netsuke

<https://archives.whyte.org/en/permalink/artifact103.08.0267>

Title:	Netsuke
Date:	1800 – 1890
Material:	wood
Dimensions:	2.4 x 4.3 x 5.3 cm
Description:	Mask of man with wide grimace, medium brown hardwood. Concave back has carved calligraphy and a single hole through which a cord would pass.
Subject:	Whyte home travel souvenir collectable keepsake households miniatures figure face Japanese E. S. Morse
Credit:	Gift of Catharine Robb Whyte, O. C., Banff, 1979
Catalogue Number:	103.08.0267

## Images



This material is presented as originally created; it may contain outdated cultural descriptions and potentially offensive content. [Read more.](#)



## Netsuke

<https://archives.whyte.org/en/permalink/artifact103.08.0268>

Title:	Netsuke
Date:	1800 – 1890
Material:	wood
Dimensions:	2.1 x 3.0 x 3.9 cm
Description:	Demon mask in red lacquer with black eyes, gold on nose and black interior at back of mask, where there is a single hole for cord passage. Red and white label on back saying "H.S 32", generally worn and soiled. Has been cracked and repaired lower left jaw, hairline crack lower right jaw, lacquer loss on right temple.
Subject:	Whyte home travel souvenir keepsake collectable households miniatures figure face Japanese E. S. Morse
Credit:	Gift of Catharine Robb Whyte, O. C., Banff, 1979
Catalogue Number:	103.08.0268

## Images



This material is presented as originally created; it may contain outdated cultural descriptions and potentially offensive content. [Read more.](#)

