

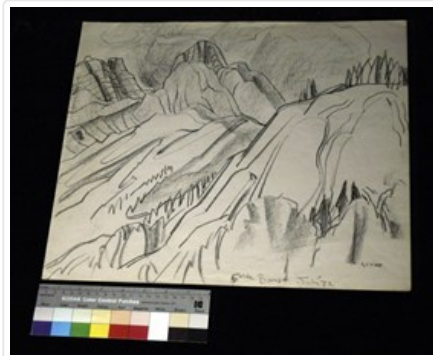


5 Mile Banff

<https://archives.whyte.org/en/permalink/artifactgyh.03.31>

Artist:	Henry George Glyde (1906 – 1998, Canadian)
Title:	5 Mile Banff
Date:	1972
Medium:	graphite on paper
Description:	A mountain landscape sketch. Two peaks rise on the left, a rounded peak with tree coverage sits in the bottom right. Bottom left "5 Mile Banff July '72", bottom right "Glyde."
Subject:	landscape Canadian mountain
Credit:	Gift of Henry George Glyde, Victoria, 1997
Catalogue Number:	GyH.03.31

Images



This material is presented as originally created; it may contain outdated cultural descriptions and potentially offensive content. [Read more.](#)



5 Mile Point, West of Banff

<https://archives.whyte.org/en/permalink/artifactgyh.03.04>

Artist:	Henry George Glyde (1906 – 1998, Canadian)
Title:	5 Mile Point, West of Banff
Date:	1957
Medium:	graphite on paper
Description:	Large jagged rocks encompass the centre of this work, with grass and foliage surrounding. A large tree rises on the right.
Subject:	landscape Canadian mountain
Credit:	Gift of Henry George Glyde, Victoria, 1997
Catalogue Number:	GyH.03.04

Images



This material is presented as originally created; it may contain outdated cultural descriptions and potentially offensive content. [Read more.](#)



Bottom of the Canyon

<https://archives.whyte.org/en/permalink/artifactgyh.02.08>

Artist:	Henry George Glyde (1906 – 1998, Canadian)
Title:	Bottom of the Canyon
Date:	n.d.
Medium:	oil on masonite
Dimensions:	33 x 40.5 cm
Description:	An abstract oil of water rushing over rocks. The colours dominant in this work are white, yellow, peach and blue.
Subject:	landscape Canadian rock boulder canyon
Credit:	Gift of Henry George Glyde, Victoria, 1997
Catalogue Number:	GyH.02.08

Images



This material is presented as originally created; it may contain outdated cultural descriptions and potentially offensive content. [Read more.](#)

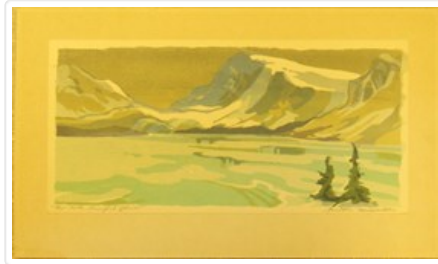


Bow Lake, Crowfoot Glacier

<https://archives.whyte.org/en/permalink/artifactmij.04.36>

Artist:	Janet Holly Middleton (1922 – 2018, Canadian)
Title:	Bow Lake, Crowfoot Glacier
Date:	n.d.
Medium:	print on paper
Dimensions:	20.5 x 34.5 cm
Description:	<p>A mountain landscape silkscreen print. In the background there is a grey-brown sky and a blue mountain with white snow accents dominating the right side of the image and to the left of the mountain is another smaller peak. Between the two mountains is a glacier. In front of the glacier and mountains is a light blue lake and in the foreground in the right corner are two dark green coniferous trees. The print is primarily blues, greens and white with about 10 colours used in total. Under the image in the bottom left corner written in pencil is, "Bow Lake, Crowfoot Glacier" and in the bottom right corner is the artist signature.</p>
Subject:	landscape mountains glacier Janet Holly Middleton
Credit:	Gift of Joanne Thomas , Vancouver, 2012
Catalogue Number:	MiJ.04.36

Images



This material is presented as originally created; it may contain outdated cultural descriptions and potentially offensive content. [Read more.](#)



Bow Valley Series

<https://archives.whyte.org/en/permalink/artifactknd.02.01>

Artist:	Dorothy Elsie Knowles Perehudoff (1927 – 2023, Canadian)
Title:	Bow Valley Series
Date:	1991
Medium:	oil on linen
Dimensions:	81.2 x 101.6 cm
Description:	In the foreground are trees of green with a large group of mountains in the center back area. A large tree is on the left side of this painting and there are red and pink flowers in the foreground. The mountain is a grey brown colour and the majority of the trees and shrubs are different colours of green. The sky in the background is blue with some white cloud.
Subject:	landscape Canadian Yamnuska Dorothy Knowles
Credit:	Gift of Dorothy Elsie Knowles Perehudoff, Saskatoon, 1996
Catalogue Number:	KnD.02.01

Images



This material is presented as originally created; it may contain outdated cultural descriptions and potentially offensive content. [Read more.](#)



Canada Classic: Roaded Sunset

<https://archives.whyte.org/en/permalink/artifactsir.12.07>

Artist:	Robert William Sinclair (1939 – , Canadian)
Title:	Canada Classic: Roaded Sunset
Date:	1981
Medium:	charcoal; acrylic stain on raw cotton canvas
Dimensions:	127 x 115.5 cm
Description:	A mountain peak with a small section of snow sits at the bottom of the work. A small segment of road painted in brown with a white line runs toward the mountain. The sky is painted in a wash of different shades of deep red.
Subject:	landscape sky mountains
Credit:	Gift of Robert William Sinclair, Edmonton, 2010
Catalogue Number:	SiR.12.07

Images



This material is presented as originally created; it may contain outdated cultural descriptions and potentially offensive content. [Read more.](#)



Canmore

<https://archives.whyte.org/en/permalink/artifactgyh.02.12>

Artist:	Henry George Glyde (1906 – 1998, Canadian)
Title:	Canmore
Date:	1944
Medium:	oil on board
Dimensions:	25 x 35 cm
Description:	A stump sits in the left foreground of the image. Mountain range in back, yellow and brown tones throughout.
Subject:	landscape Canadian mountain stump Canmore
Credit:	Gift of Henry George Glyde, Victoria, 1997
Catalogue Number:	GyH.02.12

Images



This material is presented as originally created; it may contain outdated cultural descriptions and potentially offensive content. [Read more.](#)



Canmore Mine

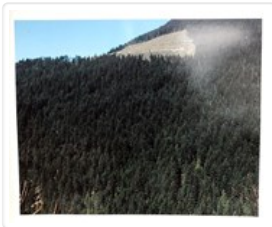
<https://archives.whyte.org/en/permalink/artifactgyh.03.35>

Artist:	Henry George Glyde (1906 – 1998, Canadian)
Title:	Canmore Mine
Date:	n.d.
Medium:	graphite on paper
Description:	Entirety of surface is heavily shaded, suggestion of buildings and a car in background and figure in foreground. Bottom right "Canmore Mine July '25 3 pm."
Subject:	landscape Canadian mine Canmore figures
Credit:	Gift of Henry George Glyde, Victoria, 1997
Catalogue Number:	GyH.03.35

Images



This material is presented as originally created; it may contain outdated cultural descriptions and potentially offensive content. [Read more.](#)

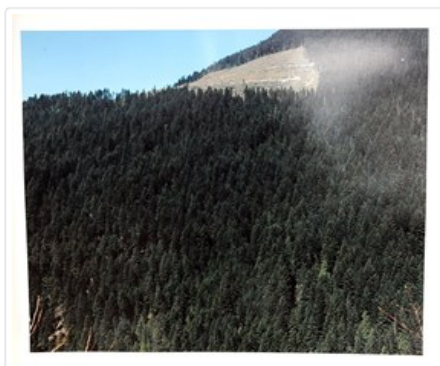


Clearcutting with the Tree-Eater

<https://archives.whyte.org/en/permalink/artifactgil.18.15>

Artist:	Lorraine Gilbert
Title:	Clearcutting with the Tree-Eater
Date:	1988 – 1994
Medium:	photograph on paper
Dimensions:	20" x 24" cm
Description:	Photograph of a "tree-eater" machine clear-cutting on a mountainside in the distance. Photograph taken in Pemberton, British Columbia.
Subject:	landscape tree-planting forest British Columbia environmentalism Canadian nature
Credit:	Gift of Lorraine Gilbert, Ottawa, 2014
Catalogue Number:	GiL.18.15

Images



This material is presented as originally created; it may contain outdated cultural descriptions and potentially offensive content. [Read more.](#)



CNTR VRTN (Centre Variation)

<https://archives.whyte.org/en/permalink/artifactsir.05.16>

Artist:	Robert William Sinclair (1939 – , Canadian)
Title:	CNTR VRTN (Centre Variation)
Date:	1980
Medium:	watercolor on arches paper
Dimensions:	45.6 x 60.7 cm
Description:	Dark sky in blues and beiges. Mountain in centre is flanked by two triangles of white. Road leading up to mountain, and mountain has small section of snow on right.
Subject:	landscape mountains road snow
Credit:	Gift of Robert William Sinclair, Edmonton, 2010
Catalogue Number:	SiR.05.16

Images



This material is presented as originally created; it may contain outdated cultural descriptions and potentially offensive content. [Read more.](#)