

Andalsnas Valley, Norway

<https://archives.whyte.org/en/permalink/artifactwyp.01.260>

Artist: Peter Whyte (1905 – 1966, Canadian)

Title: Andalsnas Valley, Norway

Date: 1938

Medium: oil on canvas

Dimensions: 34.8 x 27.1 cm

Subject: landscape ; mountains

architecture

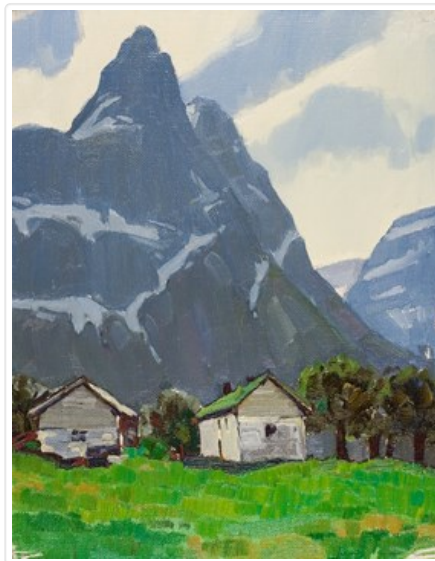
building

rural

Credit: Gift of Catharine Robb Whyte, O. C., Banff, 1979

Catalogue Number: WYP.01.260

Images



This material is presented as originally created; it may contain outdated cultural descriptions and potentially offensive content. [Read more.](#)



Approaching Alaska Range

<https://archives.whyte.org/en/permalink/artifactlim.03.02>

Artist: Mignon Fox Linck
Title: Approaching Alaska Range
Date: 1959
Medium: ink on paper
Dimensions: 9; 17 x 27.5; 27.5 cm
Description: A long pack train going from bottom right to left, heading towards a mountain pass. An illustration in the American Alpine Journal, 1955, page 79 for the article Record of the First Approach to Mt. McKinley by John C. Reed, Jr.
Subject: landscape, mountains
animal, horse
packtrain
Credit: Gift of Lillian Gest, Philadelphia, USA, 1973
Catalogue Number: LiM.03.02

This material is presented as originally created; it may contain outdated cultural descriptions and potentially offensive content. [Read more.](#)



Canmore, Alberta

<https://archives.whyte.org/en/permalink/artifactjaa.02.01>

Artist:	Alexander Young Jackson (1882 – 1974, Canadian)
Title:	Canmore, Alberta
Date:	1947
Medium:	oil on canvas
Dimensions:	52.8 x 43.8 cm
Description:	General colour: green greys, blue. Cluster of buildings across the lower third. Mountains sweeps up behind to a clouded blue sky.
Subject:	landscape, mountains architecture, urban
Credit:	Gift of Catharine Robb Whyte, O. C., Banff, 1977
Catalogue Number:	JaA.02.01
Notes:	Artistry Revealed: Peter Whyte, Catharine Robb Whyte and Their Contemporaries; June 17, 2018 to October 21, 2018

Images



This material is presented as originally created; it may contain outdated cultural descriptions and potentially offensive content. [Read more.](#)



Cathedral Mountain

<https://archives.whyte.org/en/permalink/artifacthah.03.01>

Artist:	Herbert C. Hahn (1907 – , American)
Title:	Cathedral Mountain
Date:	1928
Medium:	graphite on paper
Dimensions:	20.3 x 25.4 cm
Description:	Group of trees on the lower right in front of distant mountains.
Subject:	landscape, mountains
Credit:	Gift of Iva (Mrs. Len) Smith, 1976
Catalogue Number:	HaH.03.01

This material is presented as originally created; it may contain outdated cultural descriptions and potentially offensive content. [Read more.](#)



Come Quench Your Thirst

<https://archives.whyte.org/en/permalink/artifactgmm.11.01>

Artist: Margaret Gmoser (1945 – , Canadian)

Title: Come Quench Your Thirst

Date: 1989

Dimensions: 13.0 cm

Description: Large ceramic cup (dia. 12.2) and saucer (dia. 15.2); light brown glaze with blue flowers and green leaves on cup; the cup is tipped on its side on the saucer, adhered with wax; a picture of mountains and flora inside the cup with a blue paper river which spills onto the saucer and becomes another picture of a lake with trees, a white teepee and a little red canoe on the water; two grey wing feathers 35.5 long are attached at stem end with blue/yellow/black beading 6.5 wide; from that trails a long string of beads 66.0 long in the same colours; a .08 wide yellow bead is strung on the string about half ways.

Subject: exhibitions, Tea at the Whyte
landscape, mountains

Credit: Gift of Hans and Margaret Gmoser, Harvie Heights, 1990

Catalogue Number: GmM.11.01

Images



This material is presented as originally created; it may contain outdated cultural descriptions and potentially offensive content. [Read more.](#)



Crescendo (sic)

<https://archives.whyte.org/en/permalink/artifactgiw.18.01>

Artist: William (Bill) J. Gibbons

Title: Crescendo (sic)

Date: 1950

Medium: photography on paper

Dimensions: 37.5 x 29.5 cm

Description: A hand-coloured photograph of a tree on a rocky slope, the mountains behind, and many clouds against a dark blue background of sky. The photograph is dominated by a coniferous tree on a slope and the yellow, orange and grey clouds behind it. The photograph has rounded corners, and black lines around it and signature, that simulate a mat. "Crescendo" (sic) is written in script in the blhc and it is signed "WJ Gibbons Banff" in script in the brhc.

Subject: landscape: mountains

photography

Bill Gibbons

Credit: Gift of Margaret Reid (Estate), 2008

Catalogue Number: GiW.18.01

Images



This material is presented as originally created; it may contain outdated cultural descriptions and potentially offensive content. [Read more.](#)



The Elk River at Fernie, B.C.

<https://archives.whyte.org/en/permalink/artifacthao.05.09>

Artist:	John Hartman (1950 – , Canadian)
Title:	The Elk River at Fernie, B.C.
Date:	2011
Medium:	watercolour on paper
Dimensions:	28.5 x 35.5 cm
Description:	Watercolour of Elk River at Fernie, B.C., river in bottom right corner, blue mountain at top left, mauve mountains in back right
Subject:	landscape, mountains, Fernie, B.C., Elk River
Credit:	Gift of John Hartman, Tiny, 2014
Catalogue Number:	HaO.05.09

Images



This material is presented as originally created; it may contain outdated cultural descriptions and potentially offensive content. [Read more.](#)



Golden, B.C.

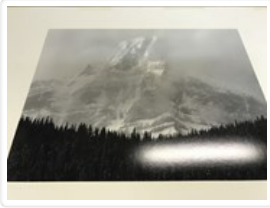
<https://archives.whyte.org/en/permalink/artifacthao.05.07>

Artist: John Hartman (1950 – , Canadian)
Title: Golden, B.C.
Date: 2010
Medium: watercolour on paper
Dimensions: 23.5 x 28.5 cm
Description: Watercolour of Golden, B.C. , mountains in background, town and river.
Subject: landscape, mountains, houses, river, Golden B.C.
Credit: Gift of John Hartman, Tiny, 2014
Catalogue Number: HaO.05.07

Images



This material is presented as originally created; it may contain outdated cultural descriptions and potentially offensive content. [Read more.](#)

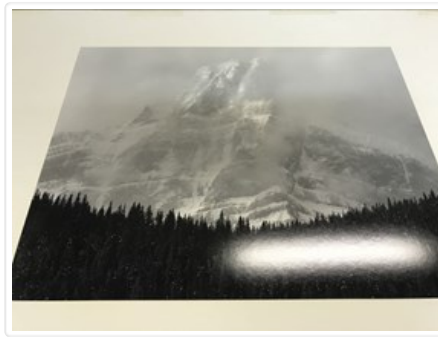


Howse Peak, Banff National Park

<https://archives.whyte.org/en/permalink/artifactric.18.04>

Artist:	Craig Richards (1955 – , Canadian)
Title:	Howse Peak, Banff National Park
Date:	1984
Medium:	gelatin silver on paper
Dimensions:	35.4 x 45.5 cm
Description:	The top two thirds is a snow covered mountain with highlights of sunshine, patches of cloud; the sky appears grey; the bottom third of the picture is a line of evergreen trees giving an overall dark texture.
Subject:	landscape, mountains
Credit:	Purchased from Craig Richards, Canmore, 1990
Catalogue Number:	RiC.18.04

Images



This material is presented as originally created; it may contain outdated cultural descriptions and potentially offensive content. [Read more.](#)



Land of the Heather

<https://archives.whyte.org/en/permalink/artifacthai.14.01>

Artist:	Haitisle
Title:	Land of the Heather
Date:	n.d.
Medium:	tempera on paper
Dimensions:	9.9 x 18.3 cm
Description:	<p>Purple heather covers the centre left amongst green grasses, some yellow flowers; a small lake is in centre right; purple mountains in background; a clear sky tinged pink/yellow has a few blue/purple clouds. The painting is on a paper card which was glued onto another card. On the back is written: Land of the Heather! Homeland of DMC (Dan McCowan).</p>
Subject:	<p>landscape, mountains, lake</p> <p>Scotland</p>
Credit:	Gift of Mary McCowan, Ladner, 1967
Catalogue Number:	Hal.14.01

This material is presented as originally created; it may contain outdated cultural descriptions and potentially offensive content. [Read more.](#)