

Beaded Purse

<https://archives.whyte.org/en/permalink/artifact103.08.1083%20a-e>

Title: Beaded Purse

Date: 1815 – 1850

Material: glass; fibre

Dimensions: 20.0 x 16.0 cm

Description: Five various sized beaded bags mounted on burgundy coloured velvet in a 7.5 wide dark cherry wood frame with glass. (a) 4.5 wide silk top with drawstring. Three horizontal panels. Top and bottom are green leaves on brown background, bottom has yellow acorns, top has white. Centre panel is 8.5 wide with blue background with finely detailed flowers in intense blues, reds and yellows with some white. (b) 24.0x16.5. Fine cotton bag with beading. 2.5 wide cotton at top with drawstring. Beading black background with vase of aqua and white bands, gold and dark green pattern. Vase holds various shades of blue flowers with some white and gold. Underneath spray of similar flowers. Beaded fringe 3.5 across bottom. (c) 16.5x13.5. Beaded beige sateen bag with 1.5 drawstring. Gold geometric beading on off-white beaded background. Looped beading fringe. (d) 12.0x7.5. Small beaded bag on beige cotton. Shaded pink roses with green leaves in overall pattern on beige beaded background. Vase-like orange and yellow object in centre of pattern. Remnants of blue and beige handle. (e) 11.0x9.0. Beige sateen drawstring 1.0. Overall geometric pattern of blue, light blue and gold. Band of light blue with dark blue and gold open pattern with dark blue border. Bottom corners have looped tassels of same colours. NOTE: the frame and burgundy-coloured velvet was removed because of discolouration; bags are a deeper colour on velvet-pressed side and faded on glass-pressed-side.

Subject: households

needlework

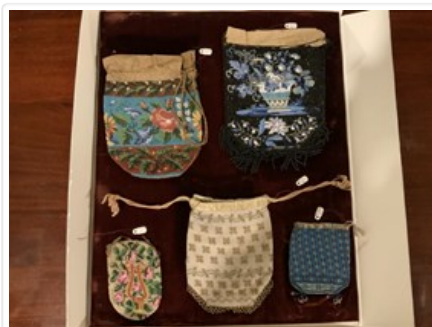
beadwork

Mary Schaffer

Credit: Gift of Charles C. Reid, Banff, Alberta, 1986

Catalogue Number: 103.08.1083 a-e

Images



This material is presented as originally created; it may contain outdated cultural descriptions and potentially offensive content. [Read more.](#)



Needlework Pattern

<https://archives.whyte.org/en/permalink/artifactpos.07.01>

Artist:	Serena Matilda Potts (1812 – 1898, American)
Title:	Needlework Pattern
Date:	1812 – 1898
Medium:	gouache on paper; card
Dimensions:	20.5 x 27.0 cm
Description:	Hand-painted needlework pattern on gridded card depicting a small brown bird among a circle of foliage and roses. There are two gold filigrees in each of the top corners. The work is signed in the top right corner "S.M. Potts" The gridded box is labeled "2067" in the top right corner. Centered beneath the box reads "Berlin bei L.W. Wittich, Frienzösische Str: No 43". Translated from German, this reads "Berlin by L.W. Wittich, French Street: No 43." In the bottom left corner of the grid, there is a "2." written.
Subject:	bird flower botanical nature floral needlework decorative
Credit:	Gift of Charles C. Reid, Banff, Alberta, 1986
Catalogue Number:	PoS.07.01

Images



This material is presented as originally created; it may contain outdated cultural descriptions and potentially offensive content. [Read more.](#)



Needlework Pattern

<https://archives.whyte.org/en/permalink/artifactpos.07.02>

Artist:	Serena Matilda Potts (1812 – 1898, American)
Title:	Needlework Pattern
Date:	1812 – 1998
Medium:	gouache on paper; card
Dimensions:	19.0 x 26.5 cm
Description:	Hand-painted needlework pattern on gridded card depicting a filigree of flowers, including deep pink roses, unknown blue flowers, and a gold decorative element in the center. The work is signed in the top right corner "S.M. Potts". The gridded box is labeled "2549" in the top right corner. Centered beneath the box reads "Berlin bei L.W. Wittich, Frienzösische Str: No 43". Translated from German, this reads "Berlin by L.W. Wittich, French Street: No 43."
Subject:	botanical flower floral needlework decorative
Credit:	Gift of Charles C. Reid, Banff, Alberta, 1986
Catalogue Number:	PoS.07.02

Images



This material is presented as originally created; it may contain outdated cultural descriptions and potentially offensive content. [Read more.](#)



Needlework Pattern

<https://archives.whyte.org/en/permalink/artifactpos.07.03>

Artist:	Serena Matilda Potts (1812 – 1898, American)
Title:	Needlework Pattern
Date:	1812 – 1898
Medium:	Gouache on paper; card
Dimensions:	19.5 x 30.5 cm
Description:	<p>Hand-painted needlework pattern on gridded card depicting a large beige house with a brown roof situated in a well landscaped area. Trees border either side of the house. A small white bench can be seen in the lower left corner, along with a pathway leading to the house in the center. In front of the house is a bright green grass lawn. The area where sky would be is left unpainted. The work is signed in the top right corner "S.M. Potts". The gridded box is labeled "2095" in the top right corner. Centered beneath the box reads "Berlin bei L.W. Wittich, Frenzösische Str: No 43". Translated from German, this reads "Berlin by L.W. Wittich, French Street: No 43." In the bottom left corner of the grid, there is a "3." written.</p>
Subject:	<p>house</p> <p>building</p> <p>landscape</p> <p>needlework</p> <p>decorative</p>
Credit:	Gift of Charles C. Reid, Banff, Alberta, 1986
Catalogue Number:	PoS.07.03

Images



This material is presented as originally created; it may contain outdated cultural descriptions and potentially offensive content. [Read more.](#)



Needlework Pattern

<https://archives.whyte.org/en/permalink/artifactpos.07.04>

Artist:	Serena Matilda Potts (1812 – 1898, American)
Title:	Needlework Pattern
Date:	1812 – 1898
Medium:	gouache on paper; card
Dimensions:	19.5 x 28.0 cm
Description:	Hand-painted needlework pattern on gridded card depicting a landscape scene with some manmade structures in the foreground and background. Flowers border the bottom left and right corners, with a waterfall flowing through. A floral garland and a long, full foliated tree stretch across the top of the work, while a small lake and gazebo can be seen in the background. The work is signed in the top right corner "S.M. Potts". The gridded box is labeled "806" in the top right corner. Centered beneath the box reads "Berlin bei L.W. Wittich, Frienzösische Str: No 43". Translated from German, this reads "Berlin by L.W. Wittich, French Street: No 43." In the bottom left corner of the grid, there is a "2" written.
Subject:	landscape needlework decorative
Credit:	Gift of Charles C. Reid, Banff, Alberta, 1986
Catalogue Number:	PoS.07.04

Images



This material is presented as originally created; it may contain outdated cultural descriptions and potentially offensive content. [Read more.](#)



Needlework Pattern

<https://archives.whyte.org/en/permalink/artifactpos.07.05>

Artist:	Serena Matilda Potts (1812 – 1898, American)
Title:	Needlework Pattern
Date:	1812 – 1898
Medium:	gouache on paper; card
Dimensions:	17.0 x 26.0 cm
Description:	Hand-painted needlework pattern on gridded card depicting a foliage wreath with varying floral blooms in pink, white, blue and yellow. There are four green filigrees, one in each corner. The work is signed in the top right corner "S.M. Potts". The gridded box is labeled "25" in the top right corner. Next to this, it reads "Berlin bei Z. A. Grünthal". Translated from German, this reads "Berlin by Z. A. Grünthal". In the bottom left corner of the grid, there is a "5." written. In the bottom right corner, "GG" is written.
Subject:	flower floral wreath needlework decorative
Credit:	Gift of Charles C. Reid, Banff, Alberta, 1986
Catalogue Number:	PoS.07.05

Images



This material is presented as originally created; it may contain outdated cultural descriptions and potentially offensive content. [Read more.](#)



Needlework Pattern

<https://archives.whyte.org/en/permalink/artifactpos.07.06>

Artist:	Serena Matilda Potts (1812 – 1898, American)
Title:	Needlework Pattern
Date:	1812 – 1898
Medium:	gouache on paper; card
Dimensions:	36.0 x 36.0 cm
Description:	Hand-painted needlework pattern on gridded card depicting an assemblage of different kinds of plants and flowers, such as a pink rose, strawberries, a red lily and bleeding hearts. The foliage and flowers make a circular shape on the gridded card. The work is signed in the top right corner "S.M. Potts". The edges of the work are sealed with some kind of fabric-like tape. The reverse has blue paper.
Subject:	floral flower still life needlework decorative
Credit:	Gift of Charles C. Reid, Banff, Alberta, 1986
Catalogue Number:	PoS.07.06

Images



This material is presented as originally created; it may contain outdated cultural descriptions and potentially offensive content. [Read more.](#)



Needlework Pattern

<https://archives.whyte.org/en/permalink/artifactpos.07.07>

Artist:	Serena Matilda Potts (1812 – 1898, American)
Title:	Needlework Pattern
Date:	1812 – 1898
Medium:	Gouache on paper; card
Dimensions:	36.5 x 34.5 cm
Description:	Hand-painted needlework pattern on gridded card depicting an assemblage of different kinds of plants and flowers in pinks, reds, blues, yellows and white. The foliage and flowers make a circular shape on the gridded card. The work is signed in the top left corner "S.M. Potts". A piece of tape at the center bottom edge reads "S M Potts"
Subject:	flower floral botanical needlework decorative
Credit:	Gift of Charles C. Reid, Banff, Alberta, 1986
Catalogue Number:	PoS.07.07

Images



This material is presented as originally created; it may contain outdated cultural descriptions and potentially offensive content. [Read more.](#)



Needlework Pattern

<https://archives.whyte.org/en/permalink/artifactpos.07.08>

Artist:	Serena Matilda Potts (1812 – 1898, American)
Title:	Needlework Pattern
Date:	1812 – 1898
Medium:	gouache on paper; card
Dimensions:	34.0 x 37.0 cm
Description:	Hand-painted needlework pattern on gridded card depicting an assemblage of different kinds of plants and flowers in pinks, reds, blues, purples, yellows and white. The foliage and flowers make a circular shape on the gridded card. The work is signed in the left center edge "S.M. Potts"
Subject:	flower floral botanical needlework decorative
Credit:	Gift of Charles C. Reid, Banff, Alberta, 1986
Catalogue Number:	PoS.07.08

Images



This material is presented as originally created; it may contain outdated cultural descriptions and potentially offensive content. [Read more.](#)



Needlework Pattern

<https://archives.whyte.org/en/permalink/artifactpos.07.09>

Artist: Serena Matilda Potts (1812 – 1898, American)

Title: Needlework Pattern

Date: 1812 – 1898

Medium: gouache on paper; card

Dimensions: 6.0 x 21.0 cm

Description: Hand-painted needlework pattern on gridded card depicting a row of roses and small purple flowers, twisted between foliage. The work is signed "S.M. Potts" in the center.

Subject: floral
flower
roses
foliage
needlework
decorative

Credit: Gift of Charles C. Reid, Banff, Alberta, 1986

Catalogue Number: PoS.07.09

Images



This material is presented as originally created; it may contain outdated cultural descriptions and potentially offensive content. [Read more.](#)