



Box

<https://archives.whyte.org/en/permalink/artifact110.01.1044%20a%2cb>

Title:	Box
Date:	1820 – 1850
Material:	paper; paint; glue; fibre
Dimensions:	9.7 x 20.7 cm
Description:	Hand made paper box with cover. Is oblong with rounded edges decorated in green and white leaf pattern, blue, black and white trim on the inside. "Belonged to Dr. Schaffer's mother" hand written on bottom of box.
Subject:	households hobbies needlework sewing Mary Schaffer Warren
Credit:	Gift of Charles C. Reid, Banff, Alberta, 1986
Catalogue Number:	110.01.1044 a,b

This material is presented as originally created; it may contain outdated cultural descriptions and potentially offensive content. [Read more.](#)



Box

<https://archives.whyte.org/en/permalink/artifact110.01.1045%20a-c>

Title:	Box
Date:	1820 – 1850
Material:	paper
Dimensions:	4.0 x 5.5 cm
Description:	A small white oval shaped paper box with blue trim. There is sticker on label from a hotel in Europe. Inside small piece lace, 10.7x4.3 cm. Inside lid, on bottom written "B E trim from Mary E. Fowler Oct 5, 1875" "Made by S.M. Potts" probably refers to the lace.
Subject:	households hobbies needlework sewing Mary Schaffer Warren S. M. Potts Mary E. Fowler
Credit:	Gift of Charles C. Reid, Banff, Alberta, 1986
Catalogue Number:	110.01.1045 a-c

This material is presented as originally created; it may contain outdated cultural descriptions and potentially offensive content. [Read more.](#)



Doily

<https://archives.whyte.org/en/permalink/artifact102.04.0027>

Title:	Doily
Date:	1820 – 1850
Material:	fibre, cotton
Dimensions:	13.5 x 13.5 cm
Description:	One extremely delicate guipure lace doily. Guipure is a lace in which the patterns are held together by connecting threads rather than attached to mesh or net ground, as in filet lace. A delicate starburst centre is ringed by nine triangles and twelve petal shapes around the border.
Subject:	households decorative crafts needlework
Credit:	Gift of Pearl Evelyn Moore, Banff, 1979
Catalogue Number:	102.04.0027

Images



This material is presented as originally created; it may contain outdated cultural descriptions and potentially offensive content. [Read more.](#)



Doily

<https://archives.whyte.org/en/permalink/artifact102.04.0029>

Title:	Doily
Date:	1820 – 1850
Material:	fibre, cotton
Dimensions:	21.5 x 33.5 cm
Description:	One extremely delicate guipure lace doily. Guipure is a lace in which the patterns are held in place by connecting threads, rather than attached to mesh or net ground, as in filet lace. This doily is elliptical in shape with a petal shapes as a border. The interior design features a central circle with four circles spaced around the edge of the piece.
Subject:	households decorative crafts needlework
Credit:	Gift of Pearl Evelyn Moore, Banff, 1979
Catalogue Number:	102.04.0029

Images



This material is presented as originally created; it may contain outdated cultural descriptions and potentially offensive content. [Read more.](#)



Doily Set

<https://archives.whyte.org/en/permalink/artifact102.04.0028>

Title:	Doily Set
Date:	1820 – 1850
Material:	cotton
Dimensions:	14.0 x 14.0 cm
Description:	Three extremely delicate guipure lace doilies. Guipure is a lace in which the patterns are held in place by connecting threads rather than attached to mesh or net ground. 102.04.0028a is slightly different in design from the other two doilies. Each has a petal shape border with a starburst centre.
Subject:	households decorative crafts needlework
Credit:	Gift of Pearl Evelyn Moore, Banff, 1979
Catalogue Number:	102.04.0028

Images



This material is presented as originally created; it may contain outdated cultural descriptions and potentially offensive content. [Read more.](#)



Embroidery Sampler

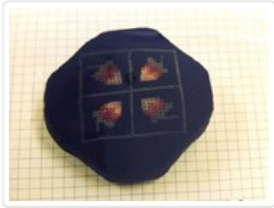
<https://archives.whyte.org/en/permalink/artifact107.02.1006%20a%2c%20b>

Title:	Embroidery Sampler
Date:	1820 – 1825
Material:	fibre, cotton
Dimensions:	44.75 x 51.0 cm
Description:	Two verses centered in picture in tiny brown straight stitch embroidery "How should thee morning of my days Be spent in humble prayer and Praise, To him he save me life and breath And still preserve my soul from death - O may his condescending love Still draw my heart to things above, That I among his saints may know The joys of heaven begun below. Deborah Schaffer". Cross stitched large beige flower with blue ribbon is bottom centre from which various coloured flowers and leaves surround the verse. b) Note "Deborah Schaeffer 1540"
Subject:	households furnishings Deborah Schaffer Mary Shaffer Warren needlework embroidery
Credit:	Gift of Charles C. Reid, Banff, Alberta, 1986
Catalogue Number:	107.02.1006 a, b

Images



This material is presented as originally created; it may contain outdated cultural descriptions and potentially offensive content. [Read more.](#)

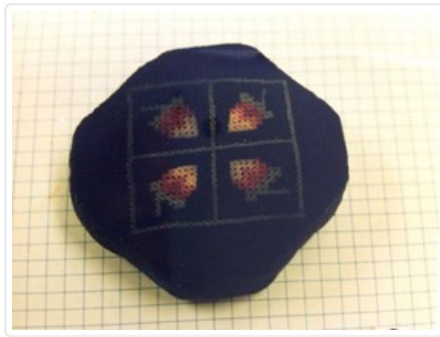


Pincushion

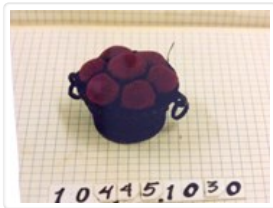
<https://archives.whyte.org/en/permalink/artifact104.45.1029>

Title:	Pincushion
Date:	1820 – 1850
Material:	fibre; paper
Dimensions:	2.5 cm
Description:	A green octagonal shaped pincushion with needlework design. A square with 4 strawberries in red, green, white on one side and a square with 4 abstract designs on the other.
Subject:	households sewing needlework Mary Schaffer Warren
Credit:	Gift of Charles C. Reid, Banff, Alberta, 1986
Catalogue Number:	104.45.1029

Images



This material is presented as originally created; it may contain outdated cultural descriptions and potentially offensive content. [Read more.](#)

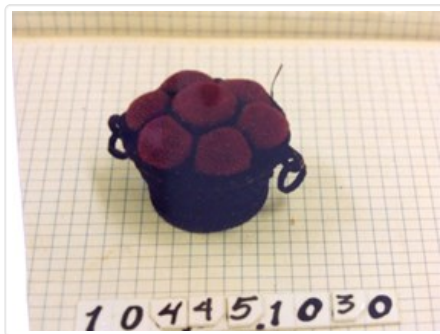


Pincushion

<https://archives.whyte.org/en/permalink/artifact104.45.1030>

Title:	Pincushion
Date:	1820 – 1850
Material:	fibre; wood
Dimensions:	5.0 cm
Description:	A pincushion shaped in a lattice woven basket full of red fabric green and red strawberries.
Subject:	households needlework Mary Schaffer Warren
Credit:	Gift of Charles C. Reid, Banff, Alberta, 1986
Catalogue Number:	104.45.1030

Images



This material is presented as originally created; it may contain outdated cultural descriptions and potentially offensive content. [Read more.](#)



Sampler

<https://archives.whyte.org/en/permalink/artifact107.02.0008>

Title:	Sampler
Date:	1822 – 1822
Material:	fibre, flax; wood; paper; metal
Dimensions:	19.0; 22.0 (frame) x 21.0; 23.5 (frame) cm
Description:	<p>A needlepoint sampler, in many colours, done in cross-stitch on loosely woven ecru linen. The sampler has a double-stitched border with stitched bars between each row of letters (A-Z) beginning with capital letters, followed by numerals from 1 to 10, then lower case letters (a-z), then numerals from 1 to 6, then large capital letters (A-F), and ending with "Serena Matilda Potts 1822." The piece was originally framed in a simple brown wood frame with a parallel line (wood grain?) texture. The paper backing has "Serena Potts' work born 1812" handwritten and a "Royal Picture Gallery" (Calgary, Alberta) framer's sticker.</p>
Subject:	<p>households</p> <p>decorative</p> <p>children</p> <p>crafts</p> <p>needlework</p> <p>Serena M. Potts</p> <p>Mary Schaffer Warren</p>
Credit:	Gift of Pearl Evelyn Moore, Banff, 1979
Catalogue Number:	107.02.0008

Images



This material is presented as originally created; it may contain outdated cultural descriptions and potentially offensive content. [Read more.](#)



Table Throw

<https://archives.whyte.org/en/permalink/artifact102.04.0026>

Title:	Table Throw
Date:	1820 – 1850
Material:	fibre, cotton
Dimensions:	37.0 x 49.0 cm
Description:	One very delicate guipure lace mat. Guipure is a lace in which the patterns are held in place by connecting threads rather than attached to mesh or net ground, as in filet lace. The doily has a quadrifoliate shape of four large scallops with four smaller scallops between each of the large scallops. The center of the doily has four star shaped flowers. The outside edge of the doily is also scalloped.
Subject:	households decorative crafts needlework
Credit:	Gift of Pearl Evelyn Moore, Banff, 1979
Catalogue Number:	102.04.0026

Images



This material is presented as originally created; it may contain outdated cultural descriptions and potentially offensive content. [Read more.](#)