



Bag

<https://archives.whyte.org/en/permalink/artifact103.08.0036>

Title:	Bag
Date:	1910 – 1950
Material:	fibre
Dimensions:	20.0 x 19.0 cm
Description:	A square, handwoven, white cotton bag with a short brown twisted cord handles through holes in the side near the top opening. A picture on the side of the bag is worked in cross stitch embroidery and is a wide border framing two peacocks and a tree in the centre.
Subject:	households decorative crafts needlework
Credit:	Gift of Pearl Evelyn Moore, Banff, 1979
Catalogue Number:	103.08.0036

Images



This material is presented as originally created; it may contain outdated cultural descriptions and potentially offensive content. [Read more.](#)



Bag

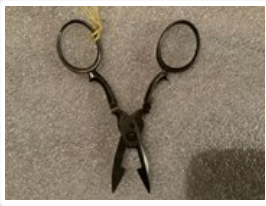
<https://archives.whyte.org/en/permalink/artifact103.08.0047>

Title:	Bag
Date:	1910 – 1940
Material:	hair, sheep; fibre, silk; glass
Dimensions:	20.5 x 22.0 cm
Description:	A flat, square, red wool drawstring bag with a pattern of large orange and white flowers outlined with black triangles embroidered all over. Each of the flowers has a piece of mirrored glass at the centre.
Subject:	households crafts needlework
Credit:	Gift of Pearl Evelyn Moore, Banff, 1979
Catalogue Number:	103.08.0047

Images



This material is presented as originally created; it may contain outdated cultural descriptions and potentially offensive content. [Read more.](#)

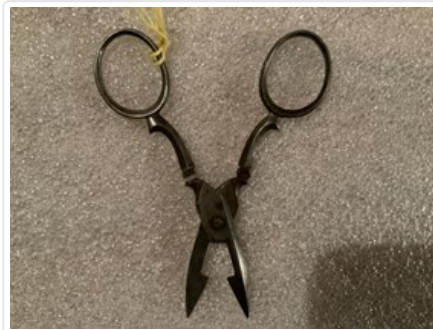


Buttonhole Scissors

<https://archives.whyte.org/en/permalink/artifact104.45.0002>

Title:	Buttonhole Scissors
Date:	1910 – 1940
Material:	metal
Dimensions:	0.3 x 4.3 x 9.7 cm
Description:	A pair of metal scissors with a screw hinge. The blades are straight and very thick at a blunt edge with a rectangular notch cut out near the base of the sharp edge forming an open slit when the scissors are closed. The short arms have a fancy angular design spreading out slightly with finger loops at the end.
Subject:	households crafts needlework sewing hobbies
Credit:	Gift of Pearl Evelyn Moore, Banff, 1979
Catalogue Number:	104.45.0002

Images



This material is presented as originally created; it may contain outdated cultural descriptions and potentially offensive content. [Read more.](#)



Cross Stitch Sampler

<https://archives.whyte.org/en/permalink/artifact107.02.0024>

Title:	Cross Stitch Sampler
Date:	1913
Material:	hair; fibre
Dimensions:	23.0 x 30.4 cm

Description: A rectangular piece of commercially woven needlepoint canvas with sampler design worked in wool slightly off centre and closer to the top. Background fabric natural ecru colour with rectangular sampler bordered in blue with light blue fret pattern edging. Alphabet of capital letters worked at the top in tan colour with cross stitch, with a cross stitched dog filling the space left at the end of the alphabet, then a row of blue cross stitching divides the numerals from 1 through 9 to 0 in light green, ending with the date "1913", then a blue line followed by "Catharine Robb", in pink, "her sampler, aged 7", in light green. Followed by a blue line with a small looped garland of pink flowers hanging from it, and a picture below carefully worked in needlepoint of a basket of flowers at the centre and a tree in pink flowerpot on either side.

Subject: households
decorative
craft
needlework
CR
children
Edith Morse Robb

Credit: Gift of Catharine Robb Whyte, O. C., Banff, 1979

Catalogue Number: 107.02.0024

Images



This material is presented as originally created; it may contain outdated cultural descriptions and potentially offensive content. [Read more.](#)



Embroidered Table Runner

<https://archives.whyte.org/en/permalink/artifact102.04.1030>

Title:	Embroidered Table Runner
Date:	1910 – 1940
Material:	fibre
Dimensions:	40.0 x 113.0 cm
Description:	A long, ecru-coloured, linen table runner. It has a symmetrical design, cut work and embroidery.
Subject:	households needlework hobbies Mary Schaffer
Credit:	Gift of Charles C. Reid, Banff, Alberta, 1986
Catalogue Number:	102.04.1030

Images



This material is presented as originally created; it may contain outdated cultural descriptions and potentially offensive content. [Read more.](#)



Fire Screen

<https://archives.whyte.org/en/permalink/artifact102.03.1011>

Title:	Fire Screen
Date:	prior to 1930
Material:	wood; glass; fibre
Description:	A wooden (mahogany ? rosewood ?) stand, two claw feet with a tall turned pole each side holds an oval shaped glass covered embroidered screen. The screen is framed with wood with cloth backing. The embroidery is on a beige silk background, yellow and pink flowers with long green leaves.
Subject:	households furniture Mary Schaffer embroidery needlework
Credit:	Gift of Charles C. Reid, Banff, Alberta, 1986
Catalogue Number:	102.03.1011

Images



This material is presented as originally created; it may contain outdated cultural descriptions and potentially offensive content. [Read more.](#)



Gauntlet Gloves

<https://archives.whyte.org/en/permalink/artifact103.07.1053%20a%2cb>

Title:	Gauntlet Gloves
Date:	1915 – 1930
Material:	skin; fibre
Dimensions:	21.5 x 34.0 cm
Description:	Floral embroidery on white buckskin, machine sewn, embroidered on glove and gauntlet, same design but smaller on glove, open floral design: 3 flowers in red, purple buds, green leaves, bluestems, 5.0 long fringe sewn to gauntlets, pink cotton lining in gauntlet, decorative machine stitching on inside of gauntlet.
Subject:	Indigenous regalia embroidery needlework Deer Lodge souvenirs
Credit:	Gift of Robert Crosby, Banff, 1985
Catalogue Number:	103.07.1053 a,b

Images



This material is presented as originally created; it may contain outdated cultural descriptions and potentially offensive content. [Read more.](#)



Handkerchief

<https://archives.whyte.org/en/permalink/artifact103.08.0029>

Title:	Handkerchief
Date:	1910 – 1930
Material:	fibre, cotton
Dimensions:	28.0 x 28.0 cm
Description:	A square cotton handkerchief with narrow, simple, lace edging. A lace butterfly is set into one corner. This handkerchief was handmade by Puerto Rican orphans.
Subject:	households grooming social customs crafts needlework
Credit:	Gift of Pearl Evelyn Moore, Banff, 1979
Catalogue Number:	103.08.0029

Images



This material is presented as originally created; it may contain outdated cultural descriptions and potentially offensive content. [Read more.](#)



Handkerchief

<https://archives.whyte.org/en/permalink/artifact103.08.0030>

Title:	Handkerchief
Date:	1910 – 1930
Material:	fibre, cotton
Dimensions:	26.0 x 26.0 cm
Description:	A square, fine cotton, handkerchief with a narrow Brussels lace border, and a lace inset at one corner.
Subject:	households grooming social customs crafts needlework
Credit:	Gift of Pearl Evelyn Moore, Banff, 1979
Catalogue Number:	103.08.0030

Images



This material is presented as originally created; it may contain outdated cultural descriptions and potentially offensive content. [Read more.](#)



Handknit Stocking

<https://archives.whyte.org/en/permalink/artifact103.03.1061%20a%2cb>

Title:	Handknit Stocking
Date:	prior to 1930
Material:	fibre; metal
Dimensions:	13.5 x 36.5 cm
Description:	<p>One stocking in the making. Very fine knitting, needles are 1.0 mm thick. Ribbed at the top, which would be below the knee, it narrows at the ankle, heel is turned, and the knitting stops half way to the toes, needles intact. (b) 52.0 long and 12.0 wide at opening, this is a long stocking shaped tube of fine cotton, however there is no indication for a heel.</p>
Subject:	<p>households</p> <p>clothing</p> <p>hobbies</p> <p>needlework</p> <p>knitting</p> <p>Mary Schaffer</p>
Credit:	Gift of Charles C. Reid, Banff, Alberta, 1986
Catalogue Number:	103.03.1061 a,b

Images



This material is presented as originally created; it may contain outdated cultural descriptions and potentially offensive content. [Read more.](#)