



Purse

<https://archives.whyte.org/en/permalink/artifact103.08.0040%20a%2cb>

| | |
|-------------------|---|
| Title: | Purse |
| Date: | 1920 – 1935 |
| Material: | fibre, silk |
| Dimensions: | 2.0 x 7.0 x 7.0 cm |
| Description: | Two matching small gold silk drawstring purses whose drawstrings are tied together. Each purse has delicate purple and blue flowers embroidered with silk and metallic thread, and two long red silk tassels hanging from the top of either side. Both purses are padded. |
| Subject: | households crafts needlework |
| Credit: | Gift of Pearl Evelyn Moore, Banff, 1979 |
| Catalogue Number: | 103.08.0040 a,b |

Images



This material is presented as originally created; it may contain outdated cultural descriptions and potentially offensive content. [Read more.](#)



Purse

<https://archives.whyte.org/en/permalink/artifact103.08.0044>

| | |
|-------------------|--|
| Title: | Purse |
| Date: | 1930 – 1950 |
| Material: | fibre, silk |
| Dimensions: | 30.0 x 35.0 cm |
| Description: | A navy blue square silk bag which attaches to two hoop handles which have been wrapped with navy blue thread. The bag is decorated with a delicate scene of butterflies hovering over flowers and grass blades that has been embroidered with pink, brown, white and green silk thread and embellished with beads. |
| Subject: | households crafts needlework beadwork |
| Credit: | Gift of Pearl Evelyn Moore, Banff, 1979 |
| Catalogue Number: | 103.08.0044 |

Images



This material is presented as originally created; it may contain outdated cultural descriptions and potentially offensive content. [Read more.](#)



Purse

<https://archives.whyte.org/en/permalink/artifact103.08.0054>

| | |
|-------------------|---|
| Title: | Purse |
| Date: | 1900 – 1920 |
| Material: | fibre |
| Dimensions: | 14.0 x 24.0 cm |
| Description: | A crocheted brown cord sack-shaped bag with three horizontal openwork bands. There is a short fringe around the sides, the bottom, and also along the shaped top. The bag is fastened with a button, and has one tassel at the top. |
| Subject: | households crafts needlework |
| Credit: | Gift of Pearl Evelyn Moore, Banff, 1979 |
| Catalogue Number: | 103.08.0054 |

Images



This material is presented as originally created; it may contain outdated cultural descriptions and potentially offensive content. [Read more.](#)



Purse

<https://archives.whyte.org/en/permalink/artifact103.08.0057%20a%2cb>

| | |
|-------------------|---|
| Title: | Purse |
| Date: | 1930 – 1945 |
| Material: | hair, sheep; fibre; wood |
| Dimensions: | 23.5 (a); 6.0 (b) x 27.0 (a); 9.5 (b) cm |
| Description: | A handbag (a) and matching change purse (b). The navy blue wool handbag has carved wooden handles, a satin lining, and a red and white monogram "P.B.M." worked in cross stitch. The change purse, found inside the purse, is also made of navy blue wool and has a pointed flap. |
| Subject: | households Pearl Moore crafts needlework |
| Credit: | Gift of Pearl Evelyn Moore, Banff, 1979 |
| Catalogue Number: | 103.08.0057 a,b |

Images



This material is presented as originally created; it may contain outdated cultural descriptions and potentially offensive content. [Read more.](#)



Purse

<https://archives.whyte.org/en/permalink/artifact103.08.0058>

| | |
|-------------------|---|
| Title: | Purse |
| Date: | 1930 – 1950 |
| Material: | fibre, cotton; wood |
| Dimensions: | 38.5 x 41.0 cm |
| Description: | A white cotton handbag decorated with red and green animals worked in cross stitch. The bag has a wooden frame at the opening, and two short handles of the same material as the bag. |
| Subject: | households crafts needlework |
| Credit: | Gift of Pearl Evelyn Moore, Banff, 1979 |
| Catalogue Number: | 103.08.0058 |

Images



This material is presented as originally created; it may contain outdated cultural descriptions and potentially offensive content. [Read more.](#)



Purse

<https://archives.whyte.org/en/permalink/artifact103.08.0061>

| | |
|-------------------|--|
| Title: | Purse |
| Date: | 1945 – 1955 |
| Material: | hair, sheep |
| Dimensions: | 18.5 x 14.5 cm |
| Description: | A flat, rectangular, bag of white and black wool with red vertical zig-zag bands. The bag has three beaded tassels hanging from the bottom edge, and two knitted multicoloured dolls hanging from the bag's long red handle. |
| Subject: | households crafts beadwork needlework weaving |
| Credit: | Gift of Pearl Evelyn Moore, Banff, 1979 |
| Catalogue Number: | 103.08.0061 |

Images



This material is presented as originally created; it may contain outdated cultural descriptions and potentially offensive content. [Read more.](#)



Purse

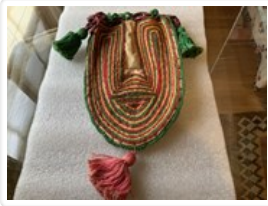
<https://archives.whyte.org/en/permalink/artifact103.08.0062>

| | |
|-------------------|---|
| Title: | Purse |
| Date: | 1950 – 1960 |
| Material: | hair, sheep |
| Dimensions: | 15.0 x 19.5 cm |
| Description: | A rectangular, flat, red wool bag with pink, orange, yellow, green and white narrow stripes between three vertical red and white patterned bands. The purse has a green tassel at each of the bottom corners and a pink tassel at the middle of each side and the bottom. |
| Subject: | households crafts weaving needlework |
| Credit: | Gift of Pearl Evelyn Moore, Banff, 1979 |
| Catalogue Number: | 103.08.0062 |

Images



This material is presented as originally created; it may contain outdated cultural descriptions and potentially offensive content. [Read more.](#)



Purse

<https://archives.whyte.org/en/permalink/artifact103.08.0063>

| | |
|-------------------|---|
| Title: | Purse |
| Date: | 1920 – 1950 |
| Material: | fibre, cotton |
| Dimensions: | 16.0 x 32.0 cm |
| Description: | <p>A pouch-shaped bag of white cotton with a drawstring at the neck. The bag is decorated with narrow bands of red, green and yellow embroidery following the shape of the bag, and with a pink tassel at the bottom. The bag's drawstring is made of twisted pink and black threads, and has a green tassel at each end.</p> |
| Subject: | <p>households</p> <p>crafts</p> <p>needlework</p> |
| Credit: | Gift of Pearl Evelyn Moore, Banff, 1979 |
| Catalogue Number: | 103.08.0063 |

Images



This material is presented as originally created; it may contain outdated cultural descriptions and potentially offensive content. [Read more.](#)



Purse

<https://archives.whyte.org/en/permalink/artifact103.08.0065%20a%2cb>

| | |
|-------------------|--|
| Title: | Purse |
| Date: | 1910 – 1930 |
| Material: | (a) fibre, cotton; (b) skin |
| Dimensions: | 14.5 (a); 5.0 (b) x 22.5 (a); 7.5 (b) cm |
| Description: | A purse that has a small change purse inside. The purse (a) is a black polished cotton clutch purse covered with crewel work flowers of vibrant reds, blues, pinks, yellows and white. The purse has a small loop handle. The change purse (b) is a small leather coin purse with a white Scottie dog on the flap. |
| Subject: | households crafts needlework |
| Credit: | Gift of Pearl Evelyn Moore, Banff, 1979 |
| Catalogue Number: | 103.08.0065 a,b |

Images



This material is presented as originally created; it may contain outdated cultural descriptions and potentially offensive content. [Read more.](#)



Purse

<https://archives.whyte.org/en/permalink/artifact103.08.0066>

| | |
|-------------------|--|
| Title: | Purse |
| Date: | 1945 – 1955 |
| Material: | fibre, plant; fibre, raffia |
| Description: | A circular handbag formed from two woven disks of natural straw that have been sewn together along the outer edge with green and red raffia. The bag is decorated with groups of red, orange and purple flowers with green leaves, each group spaced evenly around the bag. The bag has a single braided straw handle. |
| Subject: | households crafts weaving needlework |
| Credit: | Gift of Pearl Evelyn Moore, Banff, 1979 |
| Catalogue Number: | 103.08.0066 |

Images



This material is presented as originally created; it may contain outdated cultural descriptions and potentially offensive content. [Read more.](#)