

## Beaded Purse

<https://archives.whyte.org/en/permalink/artifact103.08.1083%20a-e>

Title: Beaded Purse

Date: 1815 – 1850

Material: glass; fibre

Dimensions: 20.0 x 16.0 cm

Description: Five various sized beaded bags mounted on burgundy coloured velvet in a 7.5 wide dark cherry wood frame with glass. (a) 4.5 wide silk top with drawstring. Three horizontal panels. Top and bottom are green leaves on brown background, bottom has yellow acorns, top has white. Centre panel is 8.5 wide with blue background with finely detailed flowers in intense blues, reds and yellows with some white. (b) 24.0x16.5. Fine cotton bag with beading. 2.5 wide cotton at top with drawstring. Beading black background with vase of aqua and white bands, gold and dark green pattern. Vase holds various shades of blue flowers with some white and gold. Underneath spray of similar flowers. Beaded fringe 3.5 across bottom. (c) 16.5x13.5. Beaded beige sateen bag with 1.5 drawstring. Gold geometric beading on off-white beaded background. Looped beading fringe. (d) 12.0x7.5. Small beaded bag on beige cotton. Shaded pink roses with green leaves in overall pattern on beige beaded background. Vase-like orange and yellow object in centre of pattern. Remnants of blue and beige handle. (e) 11.0x9.0. Beige sateen drawstring 1.0. Overall geometric pattern of blue, light blue and gold. Band of light blue with dark blue and gold open pattern with dark blue border. Bottom corners have looped tassels of same colours. NOTE: the frame and burgundy-coloured velvet was removed because of discolouration; bags are a deeper colour on velvet-pressed side and faded on glass-pressed-side.

Subject: households

needlework

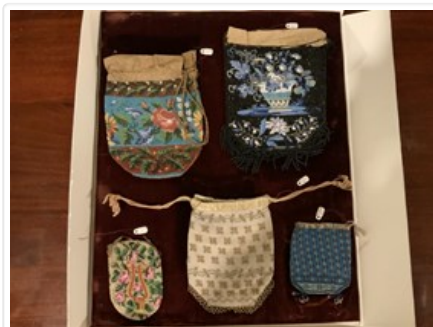
beadwork

Mary Schaffer

Credit: Gift of Charles C. Reid, Banff, Alberta, 1986

Catalogue Number: 103.08.1083 a-e

## Images



This material is presented as originally created; it may contain outdated cultural descriptions and potentially offensive content. [Read more.](#)



## Beaded Purse

<https://archives.whyte.org/en/permalink/artifact103.08.1105>

Title:	Beaded Purse
Date:	1890 – 1939
Material:	metal; glass; fibre
Description:	Evening bag with shaped metal opening. Metal is silver plated with elaborately embossed design of roses and cherubs. The bag has a cross over snap closure and a silver linked chain carrying handle. The bag is made of black beads with a colourful design on both sides of a peacock sitting on a branch. Looped strands of black beads hang from the bottom edge.
Subject:	Mary Schaffer birds needlework beadwork crafts
Credit:	Gift of Charles C. Reid, Banff, Alberta, 1986
Catalogue Number:	103.08.1105

## Images



This material is presented as originally created; it may contain outdated cultural descriptions and potentially offensive content. [Read more.](#)



## Collar

<https://archives.whyte.org/en/permalink/artifact103.07.1047%20a%2cb>

Title:	Collar
Date:	1890 – 1939
Material:	fibre, cotton
Description:	Two embroidered collars.a) Fine net collar with three rows of embroidery around the outside edge. The collar is wide at the back and tapers to rounded ends for tying at the front.b) Fine cotton collar with a stand-up neck band. The collar is embroidered around the bottom edge and around the edge of the neck band.
Subject:	households clothing Mary Schaffer crafts embroidery needlework
Credit:	Gift of Charles C. Reid, Banff, Alberta, 1986
Catalogue Number:	103.07.1047 a,b

## Images



This material is presented as originally created; it may contain outdated cultural descriptions and potentially offensive content. [Read more.](#)



## Embroidered Table Runner

<https://archives.whyte.org/en/permalink/artifact102.04.1030>

Title:	Embroidered Table Runner
Date:	1910 – 1940
Material:	fibre
Dimensions:	40.0 x 113.0 cm
Description:	A long, ecru-coloured, linen table runner. It has a symmetrical design, cut work and embroidery.
Subject:	households needlework hobbies Mary Schaffer
Credit:	Gift of Charles C. Reid, Banff, Alberta, 1986
Catalogue Number:	102.04.1030

### Images



This material is presented as originally created; it may contain outdated cultural descriptions and potentially offensive content. [Read more.](#)



## Evening Purse

<https://archives.whyte.org/en/permalink/artifact103.08.1102>

Title:	Evening Purse
Date:	1830 – 1850
Material:	fibre; metal; skin
Dimensions:	8.0 x 12.0 cm
Description:	A small dainty crocheted purse. It is attached to a beautifully made metal clasp with scroll work on each end, "S. M. Potts engraved". The lining is leather, writing "S. M. Potts" and something else illegible.
Subject:	households accessories needlework Mary Schaffer S. M. Potts
Credit:	Gift of Charles C. Reid, Banff, Alberta, 1986
Catalogue Number:	103.08.1102

## Images



This material is presented as originally created; it may contain outdated cultural descriptions and potentially offensive content. [Read more.](#)



## Fire Screen

<https://archives.whyte.org/en/permalink/artifact102.03.1011>

Title:	Fire Screen
Date:	prior to 1930
Material:	wood; glass; fibre
Description:	A wooden (mahogany ? rosewood ?) stand, two claw feet with a tall turned pole each side holds an oval shaped glass covered embroidered screen. The screen is framed with wood with cloth backing. The embroidery is on a beige silk background, yellow and pink flowers with long green leaves.
Subject:	households furniture Mary Schaffer embroidery needlework
Credit:	Gift of Charles C. Reid, Banff, Alberta, 1986
Catalogue Number:	102.03.1011

## Images



This material is presented as originally created; it may contain outdated cultural descriptions and potentially offensive content. [Read more.](#)



## Glove

<https://archives.whyte.org/en/permalink/artifact103.07.1031%20a%2cb>

Title:	Glove
Date:	1890 – 1920
Material:	fibre, cotton
Description:	One pair of very fine child-sized cotton gloves. Each glove has open diagonal embroidery on the back and a chevron pattern at the wrist.
Subject:	Mary Schaffer children needlework embroidery crafts
Credit:	Gift of Charles C. Reid, Banff, Alberta, 1986
Catalogue Number:	103.07.1031 a,b

## Images



This material is presented as originally created; it may contain outdated cultural descriptions and potentially offensive content. [Read more.](#)



## Gown

<https://archives.whyte.org/en/permalink/artifact103.05.1013>

Title: Gown  
Date: 1890 – 1920  
Material: fibre, cotton  
Description: Very fine long cotton baby gown. The gown is handsewn and open at the back.  
Subject: Mary Schaffer  
children  
crafts  
sewing  
needlework  
Credit: Gift of Charles C. Reid, Banff, Alberta, 1986  
Catalogue Number: 103.05.1013

## Images



This material is presented as originally created; it may contain outdated cultural descriptions and potentially offensive content. [Read more.](#)



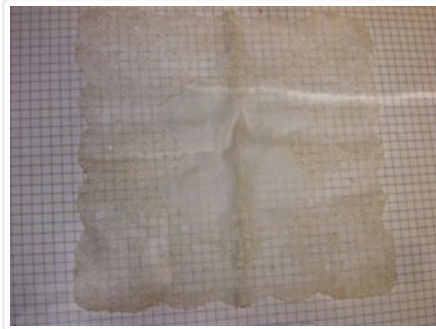


## Handkerchief

<https://archives.whyte.org/en/permalink/artifact103.08.1066>

Title: Handkerchief  
Date: 1890 – 1939  
Material: fibre  
Description: Small, very fancy, lace and cotton ladies handkerchief.  
Subject: Mary Schaffer  
crafts  
needlework  
embroidery  
Credit: Gift of Charles C. Reid, Banff, Alberta, 1986  
Catalogue Number: 103.08.1066

## Images



This material is presented as originally created; it may contain outdated cultural descriptions and potentially offensive content. [Read more.](#)



## Handknit Stocking

<https://archives.whyte.org/en/permalink/artifact103.03.1061%20a%2cb>

Title:	Handknit Stocking
Date:	prior to 1930
Material:	fibre; metal
Dimensions:	13.5 x 36.5 cm
Description:	<p>One stocking in the making. Very fine knitting, needles are 1.0 mm thick. Ribbed at the top, which would be below the knee, it narrows at the ankle, heel is turned, and the knitting stops half way to the toes, needles intact. (b) 52.0 long and 12.0 wide at opening, this is a long stocking shaped tube of fine cotton, however there is no indication for a heel.</p>
Subject:	<p>households</p> <p>clothing</p> <p>hobbies</p> <p>needlework</p> <p>knitting</p> <p>Mary Schaffer</p>
Credit:	Gift of Charles C. Reid, Banff, Alberta, 1986
Catalogue Number:	103.03.1061 a,b

## Images



This material is presented as originally created; it may contain outdated cultural descriptions and potentially offensive content. [Read more.](#)