



Beaded Armband

<https://archives.whyte.org/en/permalink/artifact103.01.3023%20a%2cb>

Title:	Beaded Armband
Date:	prior to 1970
Material:	fibre; skin
Dimensions:	19.0 (a); 18.0 (b) x 22.0 (a); 9.0 (b) cm
Description:	Two armbands made from yarn.a) Thick bright pink yarn (10.0 to 20.0 cm long) tied onto a white shoelace (22.5 cm circumference).b) Lengths of purple yarn (16.0 cm long) folded in half and machine stitched with heavy black thread to create a fringe. Leather thongs are attached to each end of the armband (24.4 cm circumference).
Subject:	Indigenous regalia ceremonial crafts sewing needlework
Credit:	Gift of Catharine Robb Whyte, O. C., Banff, 1979
Catalogue Number:	103.01.3023 a,b

Images



This material is presented as originally created; it may contain outdated cultural descriptions and potentially offensive content. [Read more.](#)



Box

<https://archives.whyte.org/en/permalink/artifact110.01.1044%20a%2cb>

Title:	Box
Date:	1820 – 1850
Material:	paper; paint; glue; fibre
Dimensions:	9.7 x 20.7 cm
Description:	Hand made paper box with cover. Is oblong with rounded edges decorated in green and white leaf pattern, blue, black and white trim on the inside."Belonged to Dr. Schaffer's mother" hand written on bottom of box.
Subject:	households hobbies needlework sewing Mary Schaffer Warren
Credit:	Gift of Charles C. Reid, Banff, Alberta, 1986
Catalogue Number:	110.01.1044 a,b

This material is presented as originally created; it may contain outdated cultural descriptions and potentially offensive content. [Read more.](#)

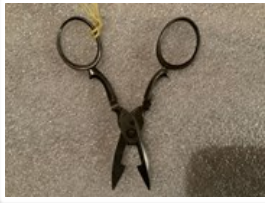


Box

<https://archives.whyte.org/en/permalink/artifact110.01.1045%20a-c>

Title:	Box
Date:	1820 – 1850
Material:	paper
Dimensions:	4.0 x 5.5 cm
Description:	A small white oval shaped paper box with blue trim. There is sticker on label from a hotel in Europe. Inside small piece lace, 10.7x4.3 cm. Inside lid, on bottom written "B E trim from Mary E. Fowler Oct 5, 1875" "Made by S.M. Potts" probably refers to the lace.
Subject:	households hobbies needlework sewing Mary Schaffer Warren S. M. Potts Mary E. Fowler
Credit:	Gift of Charles C. Reid, Banff, Alberta, 1986
Catalogue Number:	110.01.1045 a-c

This material is presented as originally created; it may contain outdated cultural descriptions and potentially offensive content. [Read more.](#)

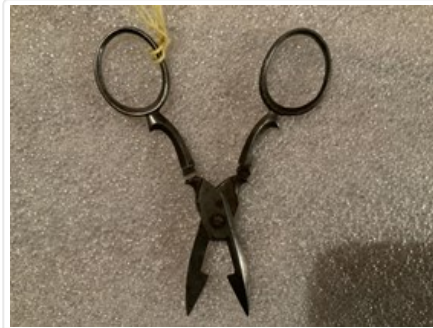


Buttonhole Scissors

<https://archives.whyte.org/en/permalink/artifact104.45.0002>

Title:	Buttonhole Scissors
Date:	1910 – 1940
Material:	metal
Dimensions:	0.3 x 4.3 x 9.7 cm
Description:	A pair of metal scissors with a screw hinge. The blades are straight and very thick at a blunt edge with a rectangular notch cut out near the base of the sharp edge forming an open slit when the scissors are closed. The short arms have a fancy angular design spreading out slightly with finger loops at the end.
Subject:	households crafts needlework sewing hobbies
Credit:	Gift of Pearl Evelyn Moore, Banff, 1979
Catalogue Number:	104.45.0002

Images



This material is presented as originally created; it may contain outdated cultural descriptions and potentially offensive content. [Read more.](#)



Double Bed Quilt

<https://archives.whyte.org/en/permalink/artifact102.01.1004>

Title:	Double Bed Quilt
Date:	c. 1870
Material:	fibre
Description:	Hand sewn, thin quilt. Pattern is red on white.
Subject:	households
	needlework
	quilting
	sewing
	White family
Credit:	Gift of Ken Campbell, Qualicum Beach, 1987
Catalogue Number:	102.01.1004

Images



This material is presented as originally created; it may contain outdated cultural descriptions and potentially offensive content. [Read more.](#)



Gown

<https://archives.whyte.org/en/permalink/artifact103.05.1013>

Title: Gown
Date: 1890 – 1920
Material: fibre, cotton
Description: Very fine long cotton baby gown. The gown is handsewn and open at the back.
Subject: Mary Schaffer
children
crafts
sewing
needlework
Credit: Gift of Charles C. Reid, Banff, Alberta, 1986
Catalogue Number: 103.05.1013

Images



This material is presented as originally created; it may contain outdated cultural descriptions and potentially offensive content. [Read more.](#)



Lace Textile Fragment

<https://archives.whyte.org/en/permalink/artifact104.45.1032%20a-f>

Title:	Lace Textile Fragment
Date:	1900 – 1930
Material:	fibre
Description:	6 pieces of lace, 3 black the same pattern, 1 daintly black flower pattern on net., one black open design could be hand made, one small ecru piece.
Subject:	households sewing hobbies needlework Mary Schaffer
Credit:	Gift of Charles C. Reid, Banff, Alberta, 1986
Catalogue Number:	104.45.1032 a-f

Images



This material is presented as originally created; it may contain outdated cultural descriptions and potentially offensive content. [Read more.](#)



Mustela Erminea Tail

<https://archives.whyte.org/en/permalink/artifact112.01.0019>

Title:	Mustela Erminea Tail
Date:	1920 – 1950
Material:	skin
Dimensions:	1.0 (average) x 1.0 (average) x 8.0 (average) cm
Description:	Twenty-three ermine tails of white fur with black tips.
Subject:	households crafts sewing needlework decoration clothing
Credit:	Gift of Pearl Evelyn Moore, Banff, 1979
Catalogue Number:	112.01.0019

Images



This material is presented as originally created; it may contain outdated cultural descriptions and potentially offensive content. [Read more.](#)



Needle Case

<https://archives.whyte.org/en/permalink/artifact104.45.1035>

Title:	Needle Case
Date:	1935 – 1965
Material:	skin; fibre; metal
Dimensions:	7.0 x 9.0 cm
Description:	Small leather booklet style needle case. Front has "Needles. Marble Canyon, B.C." handwritten in ink, along with handpainted image of Indigenous head with headdress. Metal pins hold three squares of coloured felt inside to tuck needles into.
Subject:	needlework sewing souvenirs Marble Canyon, B.C.
Credit:	Gift of Robert Crosby, Banff, 1997
Catalogue Number:	104.45.1035

Images



This material is presented as originally created; it may contain outdated cultural descriptions and potentially offensive content. [Read more.](#)



Needle Holder

<https://archives.whyte.org/en/permalink/artifact104.45.0061>

Title:	Needle Holder
Date:	n.d.
Material:	fabric; metal
Dimensions:	9.0 x 6.5 cm
Description:	A small book-shaped needle holder. Cardboard covered fabri with two "pages" of cotton edged with pink thread. Exterior is cream coloured fabric with box-stitch embroidered cornucopia with flowers on the front and "CR" in pink box stitch on the back. Interior pale pink. One needle inside. Small pink thread loop hooks over pearl ended straight pin to close book.
Subject:	Whyte home Catharine Robb Whyte sewing needlework
Credit:	Gift of Catharine Robb Whyte, O. C., Banff, 1979
Catalogue Number:	104.45.0061

Images



This material is presented as originally created; it may contain outdated cultural descriptions and potentially offensive content. [Read more.](#)