



Cutter on Choppy Sea

<https://archives.whyte.org/en/permalink/artifactwos.04.02>

Artist:	Stanley Wingate Woodward (1890 – 1970, American)
Title:	Cutter on Choppy Sea
Date:	1910 – 1935
Medium:	ink on paper
Dimensions:	17.4 x 22.5 cm
Description:	Dark etching of trim, little cutter sailing on a choppy sea with figure in the cockpit, and only the mainsail and staysail set.
Subject:	seascape boat
Credit:	Gift of Catharine Robb Whyte, O. C., Banff, 1979
Catalogue Number:	WoS.04.02

Images



This material is presented as originally created; it may contain outdated cultural descriptions and potentially offensive content. [Read more.](#)

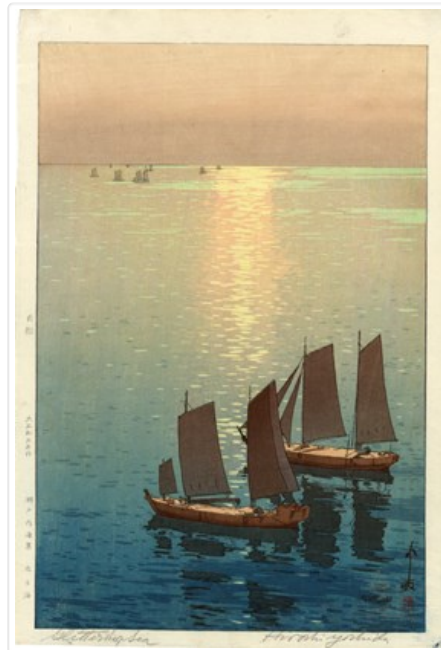


Glittering Sea, from the series: The Island Sea

<https://archives.whyte.org/en/permalink/artifactyoh.04.14>

Artist:	Hiroshi Yoshida (1876 – 1950, Japanese)
Title:	Glittering Sea, from the series: The Island Sea
Date:	1916
Medium:	woodblock on paper
Dimensions:	24.6 x 36.8 cm
Description:	Colour: blue, green. The horizon line is at five-sixths of the way up the picture. Two boats with sails sit in the lower right area. A group of boats float to the left at the horizon line. A bright reflection of the sun comes down on the water at center. The sky is beige.
Subject:	seascape transportation
Credit:	Gift of Catharine Robb Whyte, O. C., Banff, 1971
Catalogue Number:	YoH.04.14

Images



This material is presented as originally created; it may contain outdated cultural descriptions and potentially offensive content. [Read more.](#)