



### Arab Dhow

<https://archives.whyte.org/en/permalink/artifactpid.05.01>

Artist:	D. H. Pinder
Title:	Arab Dhow
Date:	c. 1930
Medium:	watercolour on paper
Dimensions:	10.8 x 19.0 cm
Description:	An unframed watercolour showing a small boat with two sails on water at sunset. In the background are palm trees and stone columns. A person and a red net are in the boat.
Subject:	seascape Atlantic boat sailing
Credit:	Gift of Pearl Evelyn Moore, Banff, 1979
Catalogue Number:	PiD.05.01

### Images



This material is presented as originally created; it may contain outdated cultural descriptions and potentially offensive content. [Read more.](#)



## Beacon Hill Park, Victoria, British Columbia

<https://archives.whyte.org/en/permalink/artifactlac.05.19>

**Artist:** Alfred Crocker Leighton, R. C. A. (1901 – 1965, Canadian)  
**Title:** Beacon Hill Park, Victoria, British Columbia  
**Date:** 1957  
**Medium:** watercolour on paper  
**Dimensions:** 22.8 x 27.8 cm  
**Description:** General colour: brown, grey. A row of eight trees crosses the picture - the foliage filling the upper left area and across the middle. Two or three figures can be seen in the left area. Back ground image is somewhat vague. The sky is cloudless.  
**Subject:** seascape, Pacific  
trees  
**Credit:** Gift of Peter and Judith Jekill, Calgary, 1973  
**Catalogue Number:** LaC.05.19

This material is presented as originally created; it may contain outdated cultural descriptions and potentially offensive content. [Read more.](#)

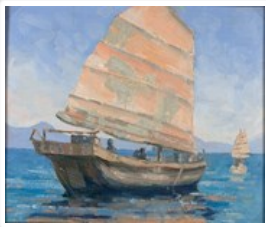


## Cadboro Bay Yacht Club, Victoria, British Columbia

<https://archives.whyte.org/en/permalink/artifactlac.05.20>

**Artist:** Alfred Crocker Leighton, R. C. A. (1901 – 1965, Canadian)  
**Title:** Cadboro Bay Yacht Club, Victoria, British Columbia  
**Date:** 1957 – 1959  
**Medium:** watercolour on paper  
**Dimensions:** 22.8 x 26.6 cm  
**Description:** General colour: grey. Lower edge is sand with birds - posts go out into the water at an angle from the right to left - there is a buoy or marker at the end. The horizon is one third up. Land can be seen out from the right side. The sky is filled with clouds.  
**Subject:** seascape, Pacific  
skyline  
**Credit:** Gift of Peter and Judith Jekill, Calgary, 1973  
**Catalogue Number:** LaC.05.20

This material is presented as originally created; it may contain outdated cultural descriptions and potentially offensive content. [Read more.](#)



## Chinese Junk

<https://archives.whyte.org/en/permalink/artifactwyp.01.137>

Artist: Peter Whyte (1905 – 1966, Canadian)

Title: Chinese Junk

Date: 1929

Medium: oil on canvas

Dimensions: 11 x 9 cm

Description: Colour: blue, pink, yellow. Central image is a boat with its sail up. The head and shoulders of three figures can be seen in the boat. On the horizon to the right side is another boat. Distant mauve mountains can be seen behind and soft white blue sky above.

Subject: seascape  
transportation  
mountains  
figures  
group

Credit: Gift of Catharine Robb Whyte, O. C., Banff, 1975

Catalogue Number: WYP.01.137

### Images



This material is presented as originally created; it may contain outdated cultural descriptions and potentially offensive content. [Read more.](#)



## Fujiyama

<https://archives.whyte.org/en/permalink/artifactwyp.01.138>

Artist:	Peter Whyte (1905 – 1966, Canadian)
Title:	Fujiyama
Date:	1929
Medium:	oil on canvas
Dimensions:	9 x 11 cm
Description:	Colour: blue, green, grey. Warm blue water in the lower quarter has three tiny boats on it in the lower right corner. Green and grey hills mark the far shore and a large blue snow capped mountain rises up behind and to the left. Clouds come down around it half way down.
Subject:	seascape mountains transportation
Credit:	Gift of Catharine Robb Whyte, O. C., Banff, 1975
Catalogue Number:	WyP.01.138

## Images



This material is presented as originally created; it may contain outdated cultural descriptions and potentially offensive content. [Read more.](#)



## Junks

<https://archives.whyte.org/en/permalink/artifactwyp.01.139>

Artist:	Peter Whyte (1905 – 1966, Canadian)
Title:	Junks
Date:	1929
Medium:	oil on canvas
Dimensions:	9 x 11 cm
Description:	Colour: blue, purple, yellow. In the lower left corner, a section of sail can be seen. In the middle of the water on the lower right side is the frontal view of a boat. Two boats are pulled up to the dock on the left and center halfway up. Purple hills are seen behind and blue sky above.
Subject:	seascape transportation mountains figure
Credit:	Gift of Catharine Robb Whyte, O. C., Banff, 1975
Catalogue Number:	WyP.01.139

## Images



This material is presented as originally created; it may contain outdated cultural descriptions and potentially offensive content. [Read more.](#)



## Little Girl on Beach

<https://archives.whyte.org/en/permalink/artifactsoe.04.01>

Artist:	Eileen A. Soper (1905 – 1990, British)
Title:	Little Girl on Beach
Date:	1920 – 1950
Medium:	etching on paper
Dimensions:	13.8 x 20.0 cm
Description:	A little girl in a dress has a bucket in her left hand and a shovel in her right hand is looking out to sea towards the left of picture. She is standing up to her ankles in water.
Subject:	figure, child seascape
Credit:	Gift of Catharine Robb Whyte, O. C., Banff, 1979
Catalogue Number:	SoE.04.01

## Images



This material is presented as originally created; it may contain outdated cultural descriptions and potentially offensive content. [Read more.](#)



## Oak Bay From Boathouse, Victoria, B.C

<https://archives.whyte.org/en/permalink/artifactlac.05.18>

Artist: Alfred Crocker Leighton, R. C. A. (1901 – 1965, Canadian)  
Title: Oak Bay From Boathouse, Victoria, B.C  
Date: 1957 – 1959  
Medium: watercolour on paper  
Dimensions: 24.0 x 31.0 cm  
Description: General colour: blue, grey. A walkway with a fence runs in a crescent shape from lower center left to a third the way up the right side. A tree fills the left side and several more trees and a large white building fill the middle. Tide is out and figures walk the beach left and on the board walk also. Sky has clouds.  
Subject: seascape, Pacific  
architecture, urban  
Credit: Gift of Peter and Judith Jekill, Calgary, 1973  
Catalogue Number: LaC.05.18

This material is presented as originally created; it may contain outdated cultural descriptions and potentially offensive content. [Read more.](#)



## Pacific Sunset

<https://archives.whyte.org/en/permalink/artifactwyp.01.136>

Artist: Peter Whyte (1905 – 1966, Canadian)

Title: Pacific Sunset

Date: 1929

Medium: oil on canvas

Dimensions: 11 x 9 cm

Description: Colour: grey, yellow, peach, blue. The lower edge is dark blue water. The rest is grey sky with two light blue green clouds and streaks of yellow and peach sunlight coming down to the water.

Subject: seascape

Pacific

Credit: Gift of Catharine Robb Whyte, O. C., Banff, 1975

Catalogue Number: WYP.01.136

### Images



This material is presented as originally created; it may contain outdated cultural descriptions and potentially offensive content. [Read more.](#)





## Peninsula, Alaska

<https://archives.whyte.org/en/permalink/artifactwyp.01.200>

Artist: Peter Whyte (1905 – 1966, Canadian)

Title: Peninsula, Alaska

Date: 1956

Medium: oil on canvas

Dimensions: 25.3 x 30.3 cm

Subject: seascape

Pacific

mountains

boat

Alaska

Credit: Gift of Catharine Robb Whyte, O. C., Banff, 1979

Catalogue Number: WYP.01.200

### Images



This material is presented as originally created; it may contain outdated cultural descriptions and potentially offensive content. [Read more.](#)