



Ashtray

<https://archives.whyte.org/en/permalink/artifact102.04.0059>

Title: Ashtray

Date: 1900 – 1940

Material: metal, brass

Dimensions: 6.0 x 8.0 x 8.0 cm

Description: A brass ashtray. The base is a shallow bowl with a sculpted figure of a seated cat placed off-centre as decoration.

Subject: households

smoking

Credit: Gift of Pearl Evelyn Moore, Banff, 1979

Catalogue Number: 102.04.0059

Images



This material is presented as originally created; it may contain outdated cultural descriptions and potentially offensive content. [Read more.](#)



Ashtray

<https://archives.whyte.org/en/permalink/artifact102.04.0060>

Title:	Ashtray
Date:	1900 – 1940
Material:	metal, copper
Dimensions:	15.0 x 15.0 cm
Description:	A crudely made ashtray. The bowl has been hammered from a flat sheet of copper, and the rim left square. The ashtray has a split in the base and the rim is bent.
Subject:	households smoking
Credit:	Gift of Pearl Evelyn Moore, Banff, 1979
Catalogue Number:	102.04.0060

Images



This material is presented as originally created; it may contain outdated cultural descriptions and potentially offensive content. [Read more.](#)



Ashtray

<https://archives.whyte.org/en/permalink/artifact102.04.0062>

Title:	Ashtray
Date:	1900 – 1940
Material:	metal, pewter; glass; stone
Dimensions:	5.0 x 9.5 x 9.5 cm
Description:	An ashtray that is a short cylinder and is spanned by a cigarette rest. The outside is decorated with a raised floral design that is inset with glass and stone. The base is stamped "China". One side is badly dented.
Subject:	households smoking
Credit:	Gift of Pearl Evelyn Moore, Banff, 1979
Catalogue Number:	102.04.0062

Images



This material is presented as originally created; it may contain outdated cultural descriptions and potentially offensive content. [Read more.](#)



Ashtray

<https://archives.whyte.org/en/permalink/artifact102.04.0065>

Title:	Ashtray
Date:	1900 – 1950
Material:	metal, silver; glass
Dimensions:	15.0 x 12.0 x 12.0 cm
Description:	A silver plated cigar ashtray with a glass insert bowl. The ashtray has a circular base with three bands arched over the bowl that support a two sided match box holder monogrammed with "P.A.M." (Philip Augustus Moore).
Subject:	households smoking
Credit:	Gift of Pearl Evelyn Moore, Banff, 1979
Catalogue Number:	102.04.0065

Images



This material is presented as originally created; it may contain outdated cultural descriptions and potentially offensive content. [Read more.](#)



Ashtray

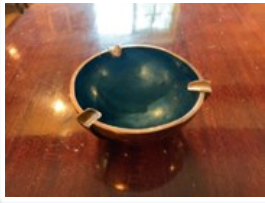
<https://archives.whyte.org/en/permalink/artifact102.04.0066>

Title:	Ashtray
Date:	1920 – 1950
Material:	metal, tin; glass; antler, deer
Dimensions:	10.5 x 16.8 x 25.0 cm
Description:	A circular ashtray with a green glass insert and decorated with deer antler. The deer antler decoration is comprised of natural antlers attached to either side of the ashtray with tips arching over the centre of the tray. The glass insert is broken.
Subject:	households smoking
Credit:	Gift of Pearl Evelyn Moore, Banff, 1979
Catalogue Number:	102.04.0066

Images



This material is presented as originally created; it may contain outdated cultural descriptions and potentially offensive content. [Read more.](#)



Ashtray

<https://archives.whyte.org/en/permalink/artifact102.04.0068>

Title:	Ashtray
Date:	1900 – 1940
Material:	metal, copper; metal, brass; enamel
Dimensions:	4.0 x 10.0 x 10.0 cm
Description:	A circular copper ashtray that is bowl shaped and is lined with blue enamel. There are three brass cigarette rests that are spaced evenly around the top rim. There is slight pitting on the base and the inside enamel is chipped. "CHINA" is stamped on the base.
Subject:	households smoking
Credit:	Gift of Pearl Evelyn Moore, Banff, 1979
Catalogue Number:	102.04.0068

Images



This material is presented as originally created; it may contain outdated cultural descriptions and potentially offensive content. [Read more.](#)



Ashtray

<https://archives.whyte.org/en/permalink/artifact102.04.0074>

Title:	Ashtray
Date:	1900 – 1950
Material:	metal
Dimensions:	3.1 x 9.3 x 12.0 cm
Description:	An ashtray shaped like a curled leaf. The ashtray rests on three small feet and is painted to look as if it's tarnished copper.
Subject:	households smoking
Credit:	Gift of Pearl Evelyn Moore, Banff, 1979
Catalogue Number:	102.04.0074

Images



This material is presented as originally created; it may contain outdated cultural descriptions and potentially offensive content. [Read more.](#)



Ashtray

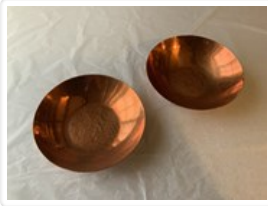
<https://archives.whyte.org/en/permalink/artifact102.04.0075>

Title:	Ashtray
Date:	1900 – 1950
Material:	ceramic; metal
Dimensions:	5.0 x 20.0 x 20.0 cm
Description:	A square ashtray with a white ceramic tile for a base. The tile is decorated with a blue rabbit. The sides of the ashtray are made of shaped sheet metal with four evenly spaced cigarette rests, one per edge. The tile is chipped and the metal is rusted.
Subject:	households smoking
Credit:	Gift of Pearl Evelyn Moore, Banff, 1979
Catalogue Number:	102.04.0075

Images



This material is presented as originally created; it may contain outdated cultural descriptions and potentially offensive content. [Read more.](#)



Ashtray

<https://archives.whyte.org/en/permalink/artifact102.04.0076%20a%2cb>

Title:	Ashtray
Date:	1920 – 1950
Material:	metal, copper
Dimensions:	2.0 x 11.0 x 11.0 cm
Description:	Two circular, hammered, copper ashtrays that are bowl-shaped. Engraved on the bottom of each is "Royal Cyprium, Coppercraft by A. E. James, Banff".
Subject:	households smoking
Credit:	Gift of Pearl Evelyn Moore, Banff, 1979
Catalogue Number:	102.04.0076 a,b

Images



This material is presented as originally created; it may contain outdated cultural descriptions and potentially offensive content. [Read more.](#)



Ashtray

<https://archives.whyte.org/en/permalink/artifact102.04.0077>

Title:	Ashtray
Date:	1920 – 1960
Material:	metal, aluminum
Dimensions:	1.0 x 11.0 x 11.0 cm
Description:	A circular, bowl shaped aluminum ashtray. The rim is decorated with raised circles connected by engraving. The inside bottom of the ashtray is also engraved with a similar design.
Subject:	households smoking
Credit:	Gift of Pearl Evelyn Moore, Banff, 1979
Catalogue Number:	102.04.0077

Images



This material is presented as originally created; it may contain outdated cultural descriptions and potentially offensive content. [Read more.](#)