



### Ashtray

<https://archives.whyte.org/en/permalink/artifact102.04.0059>

Title:	Ashtray
Date:	1900 – 1940
Material:	metal, brass
Dimensions:	6.0 x 8.0 x 8.0 cm
Description:	A brass ashtray. The base is a shallow bowl with a sculpted figure of a seated cat placed off-centre as decoration.
Subject:	households smoking
Credit:	Gift of Pearl Evelyn Moore, Banff, 1979
Catalogue Number:	102.04.0059

### Images



This material is presented as originally created; it may contain outdated cultural descriptions and potentially offensive content. [Read more.](#)



## Ashtray

<https://archives.whyte.org/en/permalink/artifact102.04.0060>

Title:	Ashtray
Date:	1900 – 1940
Material:	metal, copper
Dimensions:	15.0 x 15.0 cm
Description:	A crudely made ashtray. The bowl has been hammered from a flat sheet of copper, and the rim left square. The ashtray has a split in the base and the rim is bent.
Subject:	households smoking
Credit:	Gift of Pearl Evelyn Moore, Banff, 1979
Catalogue Number:	102.04.0060

## Images



This material is presented as originally created; it may contain outdated cultural descriptions and potentially offensive content. [Read more.](#)



## Ashtray

<https://archives.whyte.org/en/permalink/artifact102.04.0062>

Title:	Ashtray
Date:	1900 – 1940
Material:	metal, pewter; glass; stone
Dimensions:	5.0 x 9.5 x 9.5 cm
Description:	An ashtray that is a short cylinder and is spanned by a cigarette rest. The outside is decorated with a raised floral design that is inset with glass and stone. The base is stamped "China". One side is badly dented.
Subject:	households smoking
Credit:	Gift of Pearl Evelyn Moore, Banff, 1979
Catalogue Number:	102.04.0062

## Images



This material is presented as originally created; it may contain outdated cultural descriptions and potentially offensive content. [Read more.](#)



## Ashtray

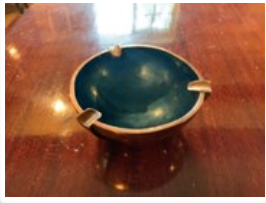
<https://archives.whyte.org/en/permalink/artifact102.04.0065>

Title:	Ashtray
Date:	1900 – 1950
Material:	metal, silver; glass
Dimensions:	15.0 x 12.0 x 12.0 cm
Description:	A silver plated cigar ashtray with a glass insert bowl. The ashtray has a circular base with three bands arched over the bowl that support a two sided match box holder monogrammed with "P.A.M." (Philip Augustus Moore).
Subject:	households smoking
Credit:	Gift of Pearl Evelyn Moore, Banff, 1979
Catalogue Number:	102.04.0065

## Images



This material is presented as originally created; it may contain outdated cultural descriptions and potentially offensive content. [Read more.](#)



## Ashtray

<https://archives.whyte.org/en/permalink/artifact102.04.0068>

Title:	Ashtray
Date:	1900 – 1940
Material:	metal, copper; metal, brass; enamel
Dimensions:	4.0 x 10.0 x 10.0 cm
Description:	A circular copper ashtray that is bowl shaped and is lined with blue enamel. There are three brass cigarette rests that are spaced evenly around the top rim. There is slight pitting on the base and the inside enamel is chipped. "CHINA" is stamped on the base.
Subject:	households smoking
Credit:	Gift of Pearl Evelyn Moore, Banff, 1979
Catalogue Number:	102.04.0068

## Images



This material is presented as originally created; it may contain outdated cultural descriptions and potentially offensive content. [Read more.](#)



## Ashtray

<https://archives.whyte.org/en/permalink/artifact102.04.0074>

Title:	Ashtray
Date:	1900 – 1950
Material:	metal
Dimensions:	3.1 x 9.3 x 12.0 cm
Description:	An ashtray shaped like a curled leaf. The ashtray rests on three small feet and is painted to look as if it's tarnished copper.
Subject:	households smoking
Credit:	Gift of Pearl Evelyn Moore, Banff, 1979
Catalogue Number:	102.04.0074

## Images



This material is presented as originally created; it may contain outdated cultural descriptions and potentially offensive content. [Read more.](#)



## Ashtray

<https://archives.whyte.org/en/permalink/artifact102.04.0075>

Title:	Ashtray
Date:	1900 – 1950
Material:	ceramic; metal
Dimensions:	5.0 x 20.0 x 20.0 cm
Description:	A square ashtray with a white ceramic tile for a base. The tile is decorated with a blue rabbit. The sides of the ashtray are made of shaped sheet metal with four evenly spaced cigarette rests, one per edge. The tile is chipped and the metal is rusted.
Subject:	households smoking
Credit:	Gift of Pearl Evelyn Moore, Banff, 1979
Catalogue Number:	102.04.0075

## Images



This material is presented as originally created; it may contain outdated cultural descriptions and potentially offensive content. [Read more.](#)



## Ashtray

<https://archives.whyte.org/en/permalink/artifact102.04.1076>

Title:	Ashtray
Date:	1905 – 1950
Material:	metal
Dimensions:	4.0 cm
Description:	Tarnished metal ashtray, circular with rest for cigarette.
Subject:	packers and guides camping smoking Bert Riggall
Credit:	Gift of Dale Burton, Surrey, 1999
Catalogue Number:	102.04.1076

## Images



This material is presented as originally created; it may contain outdated cultural descriptions and potentially offensive content. [Read more.](#)





## Ashtray Set

<https://archives.whyte.org/en/permalink/artifact102.04.0061%20a-c>

Title:	Ashtray Set
Date:	1900 – 1940
Material:	metal, pewter
Dimensions:	1.3 x 10.0 x 10.0 cm
Description:	A set of three plain pewter ashtrays in the shape of deep plates with wide rims. A label with the set reads "No. 521. Set of four Pewter Ash Trays, 4" (one missing). The bottom of each ashtray is stamped with a crown over an "X" and three pewter marks. There are slight scratches all over each ashtray.
Subject:	households smoking
Credit:	Gift of Pearl Evelyn Moore, Banff, 1979
Catalogue Number:	102.04.0061 a-c

## Images



This material is presented as originally created; it may contain outdated cultural descriptions and potentially offensive content. [Read more.](#)



## Calmulet Bowl

<https://archives.whyte.org/en/permalink/artifact109.02.0013>

Title:	Calmulet Bowl
Date:	1900 – 1930
Material:	stone, soapstone
Dimensions:	4.0 cm
Description:	A squared piece of greyish soapstone (steatite) cut roughly in the shape of a pipe bowl with a sharp right angle. There is an incised vertical line at the joint of bowl and stem piece.
Subject:	Indigenous, Plains crafts carving smoking ceremonial
Credit:	Gift of Pearl Evelyn Moore, Banff, 1979
Catalogue Number:	109.02.0013

## Images



This material is presented as originally created; it may contain outdated cultural descriptions and potentially offensive content. [Read more.](#)