



Bowl; Soup Set

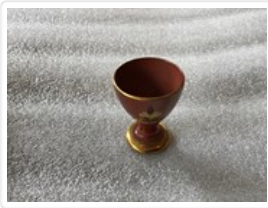
<https://archives.whyte.org/en/permalink/artifact104.20.0367%20a-d>

Title:	Bowl; Soup Set
Date:	1870 – 1935
Material:	ceramic
Dimensions:	3.5 x 18.2 cm
Description:	Transparent glaze with cobalt decoration. Exterior of each has floral scroll and 4 interiors vary. (a) hills, river, village bB) 3 porters with baggage and 2 passengers (c) figures with screens by shoreline (d) winter scene with temple in background - this is only plate with signature, gold lustre, on bottom.
Subject:	Whyte home travel souvenir keepsake collectables households Edith Morse Robb Edward S. Morse
Credit:	Gift of Catharine Robb Whyte, O. C., Banff, 1979
Catalogue Number:	104.20.0367 a-d

Images



This material is presented as originally created; it may contain outdated cultural descriptions and potentially offensive content. [Read more.](#)



Cordial Glass

<https://archives.whyte.org/en/permalink/artifact104.20.0345>

Title:	Cordial Glass
Date:	1870 – 1890
Material:	ceramic
Dimensions:	5.6 x 4.4 cm
Description:	Thrown terra cotta with transparent glaze with black over glaze enamel and gold lustre. Design possibly stamped on, consists of gold rim and base. Gold border under leaf design which contains Arabic writing. Gold stamp on outside and stamped on bottom. Chipped bottom 0.7 cm. long by 0.5 cm. wide.
Subject:	Whyte home travel souvenir keepsake gift accessories households Edith M. Robb
Credit:	Gift of Catharine Robb Whyte, O. C., Banff, 1979
Catalogue Number:	104.20.0345

Images



This material is presented as originally created; it may contain outdated cultural descriptions and potentially offensive content. [Read more.](#)



Decorative Plate

<https://archives.whyte.org/en/permalink/artifact104.20.0282%20a%2cb>

Title:	Decorative Plate
Date:	1870 – 1890
Material:	ceramic
Dimensions:	2.9 x 18.3 cm
Description:	Footed porcelain plate with cobalt hand painted circular floral design, transparent overglaze. Scroll design on outside. Both rims minor chipping and were hand carved in scallop edge design. Both have long, curved crack in bottom which starts at rim and continues across base.
Subject:	Whyte home households Edith Morse Robb Edward S. Morse collectable set travel souvenir
Credit:	Gift of Catharine Robb Whyte, O. C., Banff, 1979
Catalogue Number:	104.20.0282 a,b

Images



This material is presented as originally created; it may contain outdated cultural descriptions and potentially offensive content. [Read more.](#)



Doll's Purse

<https://archives.whyte.org/en/permalink/artifact103.08.0416>

Title:	Doll's Purse
Date:	1870 – 1890
Material:	fibre
Description:	Patchwork fabric, drawstring purse. Multi coloured and patterned fabric hand sewn together, natural coloured lining. 3 strands of light coloured string loosely woven together is the drawstring.
Subject:	Whyte home travel accessories souvenir keepsake collectable miniatures Japanese Edward S. Morse Edith Morse Robb
Credit:	Gift of Catharine Robb Whyte, O. C., Banff, 1979
Catalogue Number:	103.08.0416

Images



This material is presented as originally created; it may contain outdated cultural descriptions and potentially offensive content. [Read more.](#)



Miniature Cupboard

<https://archives.whyte.org/en/permalink/artifact105.02.0122>

Title:	Miniature Cupboard
Date:	1870 – 1890
Material:	wood; metal
Dimensions:	6.6 x 12.5 cm

Description: Japanese food storage cupboard. Rectangular shaped cupboard, solid wood back and top with wood grid sides and front. Wooden grid sides are immovable, 7.1h x 4.5w, and has wooden frame, 0.5w. Grid covers green wire mesh glued onto inside of cupboard, the two wooden framed grids covering green wire mesh in front are both movable side to side, the left one, 8.6h x 6.3w, fits into the groove, carved width of the insides of both the top and bottom of the cupboard, nearest the front. The right one, 8.6h x 6.3w, fits into the groove, carved the width of the insides of both the top and bottom of the cupboard, located behind the aforementioned one two drawers are located side by side at the bottom of the cupboard, 6.81 x 1.7h x 5.8w. Both pull out by way of round white knobs. Cupboard set onto four legs of wooden scroll design in front, plain at back. Located on the inside of the cupboard are two shelves, 2.91 x 7.0w. The left handed one is set lower then the other, 3.2 from bottom, flush to the left side grid. The right handed one is set higher then the other, 6.0 from the bottom, flush to the right side grid.

Subject: Whyte home
households
miniatures
Japanese
Edward S, Morse
Edith Morse Robb
travel
souvenir

Credit: Gift of Catharine Robb Whyte, O. C., Banff, 1979

Catalogue Number: 105.02.0122

Images



This material is presented as originally created; it may contain outdated cultural descriptions and potentially offensive content. [Read more.](#)



Miniature Dresser

<https://archives.whyte.org/en/permalink/artifact105.02.0121>

Title:	Miniature Dresser
Date:	1870 – 1890
Material:	wood; plastic
Dimensions:	10.5 x 10.0 x 4.4 cm
Description:	Japanese dresser, rectangular shaped dresser with three drawers, 4.11 x 1.9h x 4.1w, arranged one on top of the other on the upper left hand side of the dresser, each drawer pulls out. Beside the drawers on the right hand side of the dresser is a picture framed in wood, 6.4h x 4.9w, design is two pink flowers on gold coloured stems on green triangular background, 4.0h, the remainder of the design area is filled with white circles painted onto red leaves on an orange background. Pull out drawer at bottom of dresser, 2.5h x 4.01 x 9.7w. Front of drawer has scroll shaped cutout framing plastic covered picture of one pink flower with gold coloured leaves on green background to right of picture and white circles painted onto red leaves on orange background to left of picture. Back of dresser has a round hole, 1.5 dia, 1.9 from bottom to push out bottom drawer.
Subject:	Whyte home households miniatures Japanese Edward S. Morse Edith Morse Robb travel souvenir keepsake
Credit:	Gift of Catharine Robb Whyte, O. C., Banff, 1979
Catalogue Number:	105.02.0121

Images



This material is presented as originally created; it may contain outdated cultural descriptions and potentially offensive content. [Read more.](#)



Novelty Decoration

<https://archives.whyte.org/en/permalink/artifact108.05.0095%20a%2cb>

Title:	Novelty Decoration
Date:	1870 – 1890
Material:	fibre; paper
Dimensions:	5.5 x 3.7 cm
Description:	Japanese, to attach to purses or fans, etc. two fabric covered pieces joined at top, string loop at center, (a) front blue silk fabric with brown quilted horned bull, lying down, facing to the right (b) front green silk fabric with light brown quilted goat, lying down, with horns and beard, goat facing to the left
Subject:	Whyte home households adornment miniatures animal goat Japanese Edward S. Morse Edith Morse Robb travel souvenir
Credit:	Gift of Catharine Robb Whyte, O. C., Banff, 1979
Catalogue Number:	108.05.0095 a,b

Images



This material is presented as originally created; it may contain outdated cultural descriptions and potentially offensive content. [Read more.](#)



Postcard

<https://archives.whyte.org/en/permalink/artifact105.02.0126%20a-g>

Title:	Postcard
Date:	1870 – 1890
Material:	paper
Dimensions:	7.5 x 14.2 cm
Description:	Japanese, various scenes, 4 photographic, 3 painted. (a) bronze statues of Nanko Toyko, 3 figures, coloured, photograph. (b) Kegon Water fall Nikko, photograph. (c) Sorinto Nikko, photograph. (d) Urami Water fall Nikko, photograph. (e) mountain, sailboats, painting. (f) mountain, boat bow in foreground, painting. (g) similar scene as (e) except horizontal.
Subject:	households travel mountains boating souvenir;Japanese E. S. Morse;
Credit:	Gift of Catharine Robb Whyte, O. C., Banff, 1979
Catalogue Number:	105.02.0126 a-g

Images



This material is presented as originally created; it may contain outdated cultural descriptions and potentially offensive content. [Read more.](#)



Reliquary

<https://archives.whyte.org/en/permalink/artifact109.02.0052>

Title:	Reliquary
Date:	1875 – 1925
Material:	metal; glass; paper
Dimensions:	10.7 x 3.3 x 9.5 cm
Description:	An ornate, pressed copper box in shape of complex pointed arch with window opening in front; arch is composed of two convex shoulders, one atop the other, with the uppermost, smaller, reversing itself and becoming concave at the point; window opening in upper part of box follows this shape and is further defined at its edges with cut out curlicues, wall surrounding the window has pressed, relief flowers and symbols in a bed curlicues, and small holes pierced through; sides of box follow shape and are plain with a dovetailed joint at the bottom, copper double strap handle on either side across the middle (for hanging?); plain copper back is flat of glass loose inside box appears to once have sat on two small copper flanges (now broken off) just below the window.
Subject:	Whyte home keepsake souvenir travel gift storage ceremonial heriloom
Credit:	Gift of Catharine Robb Whyte, O. C., Banff, 1979
Catalogue Number:	109.02.0052

Images



This material is presented as originally created; it may contain outdated cultural descriptions and potentially offensive content. [Read more.](#)

Sachet



<https://archives.whyte.org/en/permalink/artifact103.07.0197>

Title: Sachet

Date: 1870 – 1890

Material: fibre

Dimensions: 1.7 x 3.2 x 10.5 cm

Description: Stuffed double sided gourd shaped sachet. On one side two swimming mandarin ducks painted in black on a yellowish background, on the other side three flying white doves painted onto a yellow orange background. Glued to the top of the gourd is a square green fabric from which a green cord shaped into 3 loops, 5.01 x 3.0w extends.

Subject: Whyte home
households
Japanese
Edward S. Morse
animal
dove
bird
duck
travel
souvenir
accessories
keepsake

Credit: Gift of Catharine Robb Whyte, O. C., Banff, 1979

Catalogue Number: 103.07.0197

Images



This material is presented as originally created; it may contain outdated cultural descriptions and potentially offensive content. [Read more.](#)

