



Change Purse

<https://archives.whyte.org/en/permalink/artifact103.08.0370>

Title: Change Purse

Date: 1925 – 1950

Material: fibre; ivory; metal

Dimensions: 1.3 x 7.5 x 10.0 cm

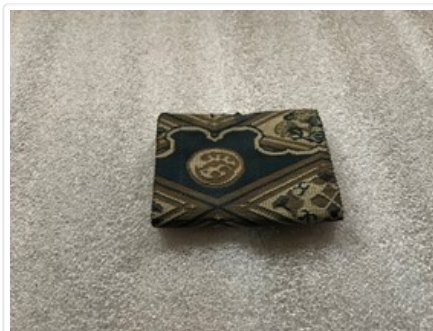
Description: A small, flat, rectangular purse of dark blue brocaded with geometric design in beige and khaki colours. Lined with navy blue silk ? brocaded with finer overall geometric pattern. Purse folds in half and latches with tiny pear shaped ring on one side which latches over tiny pin on other. Inside, one half has a full, deep pocket behind a shallower pocket in front, both lined with gold silk. Other side has expanding pocket with folded gussets at the sides, and small flap which fastens with a flat ivory clip around a thread loop on the front of the pocket. Pocket lined with gold twilled fabric. Double pocket side stitched together at sides with brown cord in a slip stitch allowing those pockets to expand slightly for fullness.

Subject: Whyte home
accessories
personal
necessities
fashion
travel
souvenir
households

Credit: Gift of Catharine Robb Whyte, O. C., Banff, 1979

Catalogue Number: 103.08.0370

Images



This material is presented as originally created; it may contain outdated cultural descriptions and potentially offensive content. [Read more.](#)



Change Purse

<https://archives.whyte.org/en/permalink/artifact103.08.0371%20a%2cb>

Title:	Change Purse
Date:	1930 – 1960
Material:	fibre; ivory; paper
Dimensions:	2.2 x 6.8 x 10.4 cm
Description:	Contained in wooden box (a), rectangular, bright vermilion red purse with silk embroidered flap depicting blue bridge passing over gold stream embroidered on back. Front full pocket expands by folded gussets at the sides, is lined with aqua fabric, and covered with full flap which fastens by means of red and gold enamelled ivory clip which hooks around thread loop on front of purse. Back compartment is laced with red thread at the sides to expand, and holds a pad of folded paper squares which is held together by two paper "staples", and fits the compartment very tightly. (b) wooden box, plain, rectangular, lightweight. Box lid fits over small lip on bottom. Red, round paper label at middle top of box with East-Asian writing, product label ? stamped on one side with round, purple stamp mark.
Subject:	Whyte home travel souvenir personal accessories households Edith Morse Robb
Credit:	Gift of Catharine Robb Whyte, O. C., Banff, 1979
Catalogue Number:	103.08.0371 a,b

Images



This material is presented as originally created; it may contain outdated cultural descriptions and potentially offensive content. [Read more.](#)



Change Purse

<https://archives.whyte.org/en/permalink/artifact103.08.0373%20a-c>

Title:	Change Purse
Date:	1950 – 1970
Material:	metal; skin; fibre
Dimensions:	8.8 x 2.8 x 14.6 cm
Description:	A collection of three change purses, each with metal frame which snaps shut with twist knob. (a) red leather, pouch hangs from "brass" frame opening to two separate pockets with metal frame supporting wall between, lined with tan coloured, suede like fabric. Knobs on outer frame snap around square flange on middle frame. (b) printed fabric, brown with bold, bright, swirling floral pattern. Deep square with hinged "brass" frame along top and down sides. Triangular, folded gussets inside form sides when open, lined with dark blue fake leather. (c) brass screening, truncated oblate spheroid shape with circular frame supporting shaped brass screening forming body. Hinged at flattened bottom, contains ten Canadian pennies, and one U.S. penny.
Subject:	Whyte home personal accessories travel souvenir households
Credit:	Gift of Catharine Robb Whyte, O. C., Banff, 1979
Catalogue Number:	103.08.0373 a-c

Images



This material is presented as originally created; it may contain outdated cultural descriptions and potentially offensive content. [Read more.](#)



Change Purse

<https://archives.whyte.org/en/permalink/artifact103.08.0425>

Title:	Change Purse
Date:	n.d.
Material:	leather; metal
Dimensions:	5.1 x 7.7 cm
Description:	Small rectangular purse with a fold over front and snap closure. The flap at the front has "CALGARY" stamped into the leather.
Subject:	Moore home souvenir purse
Credit:	Gift of Pearl Evelyn Moore, Banff, 1979
Catalogue Number:	103.08.0425

Images



This material is presented as originally created; it may contain outdated cultural descriptions and potentially offensive content. [Read more.](#)