



### Baseball Cap Hat

<https://archives.whyte.org/en/permalink/artifact103.04.0076>

Title:	Baseball Cap Hat
Date:	n.d.
Material:	fabric
Dimensions:	14.0 x 23.1 cm
Description:	Trucker-style baseball cap with mesh back, blue bill and front, and patch with "CN RAIL" and an embroidered image of a train. The hat is made of cotton, polyester, and polyurethane foam.
Subject:	Moore accessories CN Rail souvenir
Credit:	Gift of Pearl Evelyn Moore, Banff, 1979
Catalogue Number:	103.04.0076

### Images



This material is presented as originally created; it may contain outdated cultural descriptions and potentially offensive content. [Read more.](#)



## Beaded Bracelet

<https://archives.whyte.org/en/permalink/artifact103.01.0217%20a-c>

Title:	Beaded Bracelet
Date:	n.d.
Material:	string, plastic
Dimensions:	6.0 x 7.0 cm
Description:	Three, multiple-stringed bracelets all with small, square, dark rainbow coloured beads, tied together with a knot of string at the top.
Subject:	Whyte home fashion accessories jewelry travel souvenir gift
Credit:	Gift of Catharine Robb Whyte, O. C., Banff, 1979
Catalogue Number:	103.01.0217 a-c

### Images



This material is presented as originally created; it may contain outdated cultural descriptions and potentially offensive content. [Read more.](#)



## Beaded Bracelet

<https://archives.whyte.org/en/permalink/artifact103.01.0149>

Title:	Beaded Bracelet
Date:	1925 – 1950
Material:	metal; stone
Dimensions:	1.5 x 21.9 cm
Description:	<p>Crude, various coloured stones on long silver bar links. Flat, sterling silver links taper at the middle and have small eye pierced through each end. Links joined by small piece of wire shaped into a figure 8 through the eyes. Ring at one end, and two opposing hooks which swivel together to lock around ring, clasp bracelet into loop. Stones threaded on the six bars are (1) large brown bead jasper ?, (2) flat green bead quartz ?, round clear bead microline? , (3) cylindrical blue bead (lapis , large triangular aqua bead turquoise, (4) small green bead quartz ? , large red torus shaped bead jasper , small orange bead jasper ? , (5) large clear round bead - microline? , (6) large red bead jasper.</p>
Subject:	<p>Whyte home</p> <p>accessories</p> <p>jewelry</p> <p>fashion</p> <p>travel</p> <p>souvenir</p> <p>households</p> <p>adornment</p>
Credit:	Gift of Catharine Robb Whyte, O. C., Banff, 1979
Catalogue Number:	103.01.0149

## Images



This material is presented as originally created; it may contain outdated cultural descriptions and potentially offensive content. [Read more.](#)



## Beaded Necklace

<https://archives.whyte.org/en/permalink/artifact103.01.0218>

Title:	Beaded Necklace
Date:	n.d.
Material:	plastic, string
Dimensions:	28.0 x 21.0 cm
Description:	Large necklace with multiple strings of different coloured beads that come together with a white plastic clasp. Red, white, yellow, green, and brown beads.
Subject:	Whyte home accessories fashion jewellery travel souvenir
Credit:	Gift of Catharine Robb Whyte, O. C., Banff, 1979
Catalogue Number:	103.01.0218

### Images



This material is presented as originally created; it may contain outdated cultural descriptions and potentially offensive content. [Read more.](#)

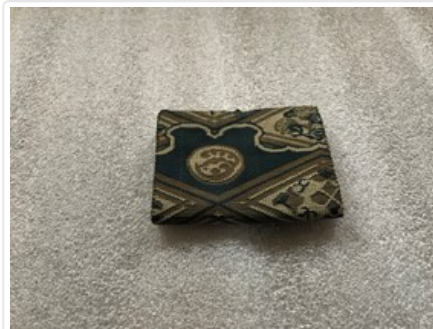


## Change Purse

<https://archives.whyte.org/en/permalink/artifact103.08.0370>

Title:	Change Purse
Date:	1925 – 1950
Material:	fibre; ivory; metal
Dimensions:	1.3 x 7.5 x 10.0 cm
Description:	<p>A small, flat, rectangular purse of dark blue brocade with geometric design in beige and khaki colours. Lined with navy blue silk ? brocade with finer overall geometric pattern. Purse folds in half and latches with tiny pear shaped ring on one side which latches over tiny pin on other. Inside, one half has a full, deep pocket behind a shallower pocket in front, both lined with gold silk. Other side has expanding pocket with folded gussets at the sides, and small flap which fastens with a flat ivory clip around a thread loop on the front of the pocket. Pocket lined with gold twilled fabric. Double pocket side stitched together at sides with brown cord in a slip stitch allowing those pockets to expand slightly for fullness.</p>
Subject:	<p>Whyte home</p> <p>accessories</p> <p>personal</p> <p>necessities</p> <p>fashion</p> <p>travel</p> <p>souvenir</p> <p>households</p>
Credit:	Gift of Catharine Robb Whyte, O. C., Banff, 1979
Catalogue Number:	103.08.0370

## Images



This material is presented as originally created; it may contain outdated cultural descriptions and potentially offensive content. [Read more.](#)



## Change Purse

<https://archives.whyte.org/en/permalink/artifact103.08.0371%20a%2cb>

Title:	Change Purse
Date:	1930 – 1960
Material:	fibre; ivory; paper
Dimensions:	2.2 x 6.8 x 10.4 cm
Description:	Contained in wooden box (a), rectangular, bright vermilion red purse with silk embroidered flap depicting blue bridge passing over gold stream embroidered on back. Front full pocket expands by folded gussets at the sides, is lined with aqua fabric, and covered with full flap which fastens by means of red and gold enamelled ivory clip which hooks around thread loop on front of purse. Back compartment is laced with red thread at the sides to expand, and holds a pad of folded paper squares which is held together by two paper "staples", and fits the compartment very tightly. (b) wooden box, plain, rectangular, lightweight. Box lid fits over small lip on bottom. Red, round paper label at middle top of box with East-Asian writing, product label ? stamped on one side with round, purple stamp mark.
Subject:	Whyte home travel souvenir personal accessories households Edith Morse Robb
Credit:	Gift of Catharine Robb Whyte, O. C., Banff, 1979
Catalogue Number:	103.08.0371 a,b

## Images



This material is presented as originally created; it may contain outdated cultural descriptions and potentially offensive content. [Read more.](#)



## Change Purse

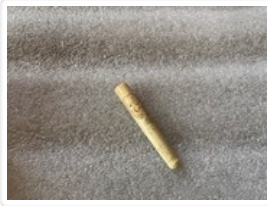
<https://archives.whyte.org/en/permalink/artifact103.08.0373%20a-c>

Title:	Change Purse
Date:	1950 – 1970
Material:	metal; skin; fibre
Dimensions:	8.8 x 2.8 x 14.6 cm
Description:	A collection of three change purses, each with metal frame which snaps shut with twist knob. (a) red leather, pouch hangs from "brass" frame opening to two separate pockets with metal frame supporting wall between, lined with tan coloured, suede like fabric. Knobs on outer frame snap around square flange on middle frame. (b) printed fabric, brown with bold, bright, swirling floral pattern. Deep square with hinged "brass" frame along top and down sides. Triangular, folded gussets inside form sides when open, lined with dark blue fake leather. (c) brass screening, truncated oblate spheroid shape with circular frame supporting shaped brass screening forming body. Hinged at flattened bottom, contains ten Canadian pennies, and one U.S. penny.
Subject:	Whyte home personal accessories travel souvenir households
Credit:	Gift of Catharine Robb Whyte, O. C., Banff, 1979
Catalogue Number:	103.08.0373 a-c

## Images



This material is presented as originally created; it may contain outdated cultural descriptions and potentially offensive content. [Read more.](#)



## Cigarette Holder

<https://archives.whyte.org/en/permalink/artifact103.08.0390>

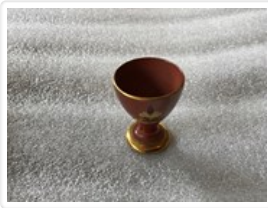
Title:	Cigarette Holder
Date:	1920 – 1940
Material:	ivory
Dimensions:	0.6 x 1.1 x 7.7 cm
Description:	A medium length cigarette holder carved of ivory with drawing of elephant incised on it. Round at end to hold cigarette, tapering slightly and flattening at mouthpiece which has carved ferrule to grip with teeth, small hole drilled through. Incised drawing of elephant around side with eye painted black and mouth painted red. Slight nicotine stains at round end.
Subject:	Whyte home personal accessories fashion travel souvenir households pastime animal elephant
Credit:	Gift of Catharine Robb Whyte, O. C., Banff, 1979
Catalogue Number:	103.08.0390

## Images



This material is presented as originally created; it may contain outdated cultural descriptions and potentially offensive content. [Read more.](#)





## Cordial Glass

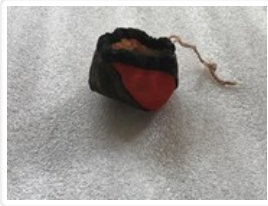
<https://archives.whyte.org/en/permalink/artifact104.20.0345>

Title:	Cordial Glass
Date:	1870 – 1890
Material:	ceramic
Dimensions:	5.6 x 4.4 cm
Description:	Thrown terra cotta with transparent glaze with black over glaze enamel and gold lustre. Design possibly stamped on, consists of gold rim and base. Gold border under leaf design which contains Arabic writing. Gold stamp on outside and stamped on bottom. Chipped bottom 0.7 cm. long by 0.5 cm. wide.
Subject:	Whyte home travel souvenir keepsake gift accessories households Edith M. Robb
Credit:	Gift of Catharine Robb Whyte, O. C., Banff, 1979
Catalogue Number:	104.20.0345

## Images



This material is presented as originally created; it may contain outdated cultural descriptions and potentially offensive content. [Read more.](#)



## Doll's Purse

<https://archives.whyte.org/en/permalink/artifact103.08.0416>

Title:	Doll's Purse
Date:	1870 – 1890
Material:	fibre
Description:	Patchwork fabric, drawstring purse. Multi coloured and patterned fabric hand sewn together, natural coloured lining. 3 strands of light coloured string loosely woven together is the drawstring.
Subject:	Whyte home travel accessories souvenir keepsake collectable miniatures Japanese Edward S. Morse Edith Morse Robb
Credit:	Gift of Catharine Robb Whyte, O. C., Banff, 1979
Catalogue Number:	103.08.0416

## Images



This material is presented as originally created; it may contain outdated cultural descriptions and potentially offensive content. [Read more.](#)