



Baseball Cap Hat

<https://archives.whyte.org/en/permalink/artifact103.04.1062>

Title:	Baseball Cap Hat
Date:	n.d.
Material:	fibre; plastic; foam
Dimensions:	12.5 x 27.0 cm
Description:	One red and white, polyester and net, cap with a sun visor. There is an orange/red label sewn on the front with white thread; it has a black stylized mountain edged in white and the CP logo "CP RAIL ROGERS PASS PROJECT". The cap is red in the front and white netting in the back: six segments, two red (polyester with foam backing) in front and four white (netting) in the back. There is a red plastic button sewn on top.
Subject:	households outdoor work project souvenir CP Rail Nick Morant
Credit:	Gift of Nicholas Morant, Banff, 2006
Catalogue Number:	103.04.1062

Images



This material is presented as originally created; it may contain outdated cultural descriptions and potentially offensive content. [Read more.](#)



Beaded Bracelet

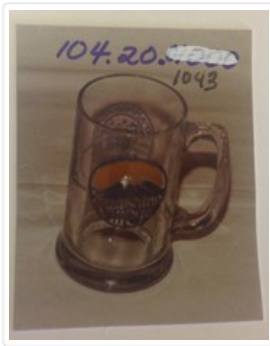
<https://archives.whyte.org/en/permalink/artifact103.01.0149>

Title:	Beaded Bracelet
Date:	1925 – 1950
Material:	metal; stone
Dimensions:	1.5 x 21.9 cm
Description:	<p>Crude, various coloured stones on long silver bar links. Flat, sterling silver links taper at the middle and have small eye pierced through each end. Links joined by small piece of wire shaped into a figure 8 through the eyes. Ring at one end, and two opposing hooks which swivel together to lock around ring, clasp bracelet into loop. Stones threaded on the six bars are (1) large brown bead jasper ?, (2) flat green bead quartz ?, round clear bead microline? , (3) cylindrical blue bead (lapis , large triangular aqua bead turquoise, (4) small green bead quartz ? , large red torus shaped bead jasper , small orange bead jasper ? , (5) large clear round bead - microline? , (6) large red bead jasper.</p>
Subject:	<p>Whyte home</p> <p>accessories</p> <p>jewelry</p> <p>fashion</p> <p>travel</p> <p>souvenir</p> <p>households</p> <p>adornment</p>
Credit:	Gift of Catharine Robb Whyte, O. C., Banff, 1979
Catalogue Number:	103.01.0149

Images



This material is presented as originally created; it may contain outdated cultural descriptions and potentially offensive content. [Read more.](#)

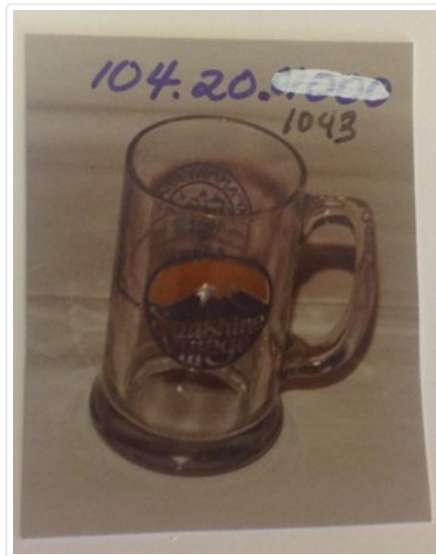


Beer Mug

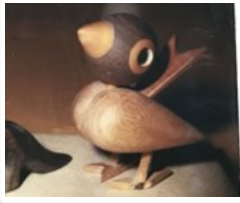
<https://archives.whyte.org/en/permalink/artifact104.20.1043>

Title:	Beer Mug
Date:	1984
Material:	glass
Dimensions:	14.0 cm
Description:	Glass beer mug shaped similar to a stein, 9.0 long handle. On one side a circular crest in yellow and blue of two mountain peaks with the words "Sunshine Village". The other side has an arch shaped crest with words "Celebrate 50th Anniversary" and "1934 Sunshine Village 1984" are centered around a picture of the renovated old lodge with gondola overhead. Joining the two crests are the words "Banff National Park - Canada"
Subject:	households souvenir Sunshine Village
Credit:	Gift of Sunshine Village, Banff, 1984
Catalogue Number:	104.20.1043

Images



This material is presented as originally created; it may contain outdated cultural descriptions and potentially offensive content. [Read more.](#)



Bird Figurine

<https://archives.whyte.org/en/permalink/artifact107.01.0114>

Title:	Bird Figurine
Date:	1960 – 1963
Material:	wood; rubber
Dimensions:	8.5 x 5.0 x 6.5 cm
Description:	Mass produced stylized bird constructed of various natural coloured spheres of wood, joined with dowels. Head has black rubber inset eyes and head swivels 360 degrees. Chip on left foot. Feet form base.
Subject:	Whyte home collectable souvenir households decorative miniatures animal bird
Credit:	Gift of Catharine Robb Whyte, O. C., Banff, 1979
Catalogue Number:	107.01.0114

Images



This material is presented as originally created; it may contain outdated cultural descriptions and potentially offensive content. [Read more.](#)



Bird Figurine

<https://archives.whyte.org/en/permalink/artifact107.01.0121>

Title:	Bird Figurine
Date:	1960 – 1970
Material:	wood
Dimensions:	8.0 x 3.6 x 11.5 cm
Description:	Simple duck like bird which has been scorched and sand blasted to reveal grain marks in wood. Stamped "Gerd Canada" on bottom. Grain of wood defines eyes and wing of bird.
Subject:	Whyte home souvenir collectable households decorative miniatures craft carving animal bird
Credit:	Gift of Catharine Robb Whyte, O. C., Banff, 1979
Catalogue Number:	107.01.0121

Images



This material is presented as originally created; it may contain outdated cultural descriptions and potentially offensive content. [Read more.](#)



Bookend

<https://archives.whyte.org/en/permalink/artifact102.04.0345%20a%2cb>

Title:	Bookend
Date:	1945 – 1948
Material:	stone; metal
Dimensions:	15.6 x 5.2 x 13.0 cm
Description:	Pair of rough beige stone bookends with upright supports and green felted bases, have been tooled over outside surfaces to create rough texture. Inset circular medallions says "This stone came from the House of Parliament". Left bookend pictures a Tudor rose, British houses of Parliament. Right bookend pictures rampant lion.
Subject:	households decorative World War II Houses of Parliament souvenir
Credit:	Gift of Catharine Robb Whyte, O. C., Banff, 1979
Catalogue Number:	102.04.0345 a,b

Images



This material is presented as originally created; it may contain outdated cultural descriptions and potentially offensive content. [Read more.](#)



Bowl

<https://archives.whyte.org/en/permalink/artifact104.20.0581>

Title:	Bowl
Date:	1925 – 1970
Material:	wood; metal
Dimensions:	4.2 x 9.1 cm
Description:	<p>A small wooden bowl lined with silver, and a silver collar around its foot, lathe turned wood with flaring lip, straight sides, and sharp shoulder leading to circular foot. Very thin silver has been pressed in to line interior and folded over the lip, leaving creases along the inner upright sides of the bowl. Collar which fits around foot is thin silver ring with a single row of gadrooming at bottom supporting a series of tiny silver robed figures standing around its circumference. Turning spiral can be seen on bottom of foot.</p>
Subject:	<p>Whyte home</p> <p>travel</p> <p>collectable</p> <p>households</p> <p>decorative</p> <p>souvenir</p> <p>Nepal</p>
Credit:	Gift of Catharine Robb Whyte, O. C., Banff, 1979
Catalogue Number:	104.20.0581

Images



This material is presented as originally created; it may contain outdated cultural descriptions and potentially offensive content. [Read more.](#)



Bowl

<https://archives.whyte.org/en/permalink/artifact111.01.1006>

Title:	Bowl
Date:	prior to 1967
Material:	metal, copper
Dimensions:	3.5 cm
Description:	The remains of a small copper bowl probably from India. Images of palm trees and male figures (dancers?) stencilled on bowl. Badly corroded.
Subject:	households souvenir
Credit:	Gift of Catharine Robb Whyte, O. C., Banff, 1967
Catalogue Number:	111.01.1006

This material is presented as originally created; it may contain outdated cultural descriptions and potentially offensive content. [Read more.](#)



Bowl; Soup Set

<https://archives.whyte.org/en/permalink/artifact104.20.0367%20a-d>

Title:	Bowl; Soup Set
Date:	1870 – 1935
Material:	ceramic
Dimensions:	3.5 x 18.2 cm
Description:	Transparent glaze with cobalt decoration. Exterior of each has floral scroll and 4 interiors vary. (a) hills, river, village bB) 3 porters with baggage and 2 passengers (c) figures with screens by shoreline (d) winter scene with temple in background - this is only plate with signature, gold lustre, on bottom.
Subject:	Whyte home travel souvenir keepsake collectables households Edith Morse Robb Edward S. Morse
Credit:	Gift of Catharine Robb Whyte, O. C., Banff, 1979
Catalogue Number:	104.20.0367 a-d

Images



This material is presented as originally created; it may contain outdated cultural descriptions and potentially offensive content. [Read more.](#)



Candy Bowl

<https://archives.whyte.org/en/permalink/artifact104.20.1060>

Title:	Candy Bowl
Date:	prior to 1970
Material:	ceramic
Description:	Small bowl with dark blue edge. Inside the bowl is a picture of a cottage with "Banff" written on. On the rim is written "Help yourself".
Subject:	Banff souvenir households
Credit:	Purchased from Alan McClelland, Banff, 1986
Catalogue Number:	104.20.1060

Images



This material is presented as originally created; it may contain outdated cultural descriptions and potentially offensive content. [Read more.](#)