



Watercolour Illustration

<https://archives.whyte.org/en/permalink/artifactpoi.05.01>

Artist:	Emily Potts (1814 – , American)
Title:	Watercolour Illustration
Date:	1830
Medium:	watercolour on paper
Dimensions:	30.5 x 23.0 cm
Description:	Botanical still life drawing of a branch with pink and white flowering blossoms. Could potentially depict peach blossoms.
Subject:	botanical still life flowers tree branch
Credit:	Gift of Charles C. Reid, Banff, Alberta, 1986
Catalogue Number:	Pol.05.01

Images



This material is presented as originally created; it may contain outdated cultural descriptions and potentially offensive content. [Read more.](#)



Watercolour Painting

<https://archives.whyte.org/en/permalink/artifactpos.05.04>

Artist:	Serena Matilda Potts (1812 – 1898, American)
Title:	Watercolour Painting
Date:	1830
Medium:	watercolour on paper
Dimensions:	24.5 x 25.5 cm
Description:	Botanical still life of two pink flowers, likely roses or peonies. Two flowers are in full bloom, while 4 are still in budding stages. Foliage is mostly a deep green with the edges of some leaves are red.
Subject:	botanical still life flowers
Credit:	Gift of Charles C. Reid, Banff, Alberta, 1986
Catalogue Number:	PoS.05.04

Images



This material is presented as originally created; it may contain outdated cultural descriptions and potentially offensive content. [Read more.](#)



Watercolour Painting

<https://archives.whyte.org/en/permalink/artifactunk.05.27>

Artist:	Unknown
Title:	Watercolour Painting
Date:	1830
Medium:	watercolour on paper
Dimensions:	24.0 x 26.0 cm
Description:	Botanical still life painting of a peach and grapes surrounded by green and orange foliage.
Subject:	botanical still life food fruit
Credit:	Gift of Charles C. Reid, Banff, Alberta, 1986
Catalogue Number:	UnK.05.27

Images



This material is presented as originally created; it may contain outdated cultural descriptions and potentially offensive content. [Read more.](#)



Watercolour Painting

<https://archives.whyte.org/en/permalink/artifactpos.05.03>

Artist:	Serena Matilda Potts (1812 – 1898, American)
Title:	Watercolour Painting
Date:	1835
Medium:	watercolour on paper
Dimensions:	27.0 x 27.5 cm
Description:	Botanical still life of four different kinds of flowers in an ornate yellow vase, resting on a square, marble-like platform. The flowers are pink, white and blue.
Subject:	botanical still life flowers
Credit:	Gift of Charles C. Reid, Banff, Alberta, 1986
Catalogue Number:	PoS.05.03

Images



This material is presented as originally created; it may contain outdated cultural descriptions and potentially offensive content. [Read more.](#)



High Life

<https://archives.whyte.org/en/permalink/artifactscm.03.01>

Artist:	Mary Schäffer (1861 – 1939, Canadian)
Title:	High Life
Date:	1882
Medium:	graphite on paper
Dimensions:	48.0;61.2 x 36.2;50.7 cm
Description:	A drawing (copy) of a dog sitting on the floor, back view with head turned to the left; he is sitting in front of a table with various things on top of it; drawn curtains in background, opened a little at the left, iron faceted window panes through which can be seen a tower with a flag. Hand written on the brown paper backing of the framed picture: Crayon Copy Mary Sharples 1880.
Subject:	still life animal, dog
Credit:	Gift of Charles C. Reid, Banff, Alberta, 1986
Catalogue Number:	ScM.03.01

This material is presented as originally created; it may contain outdated cultural descriptions and potentially offensive content. [Read more.](#)



Untitled [two egg plants]

<https://archives.whyte.org/en/permalink/artifactkou.03.01>

Artist:	Umehala Kolyo
Title:	Untitled [two egg plants]
Date:	1884 – 1884
Medium:	ink on paper
Dimensions:	32.5 x 34.5 cm
Description:	<p>an ink drawing featuring two eggplants which are both shaded in darkly, and one line drawing of a marrow vegetable. This line drawn vegetable is placed behind the largest eggplant. The drawing is set towards the bottom right of the paper. A 9cm x approx. 9cm piece is torn from the bottom right corner.</p>
Subject:	<p>still life</p> <p>vegetables</p> <p>eggplant</p>
Credit:	Gift of Catharine Robb Whyte, O. C., Banff, 1979
Catalogue Number:	KoU.03.01

Images



This material is presented as originally created; it may contain outdated cultural descriptions and potentially offensive content. [Read more.](#)



Untitled [Insect and Basket]

<https://archives.whyte.org/en/permalink/artifacttah.03.01>

Artist:	Hobun Tani
Title:	Untitled [Insect and Basket]
Date:	1887 – 1887
Medium:	ink on paper
Dimensions:	33.0 x 35.0 cm
Description:	A brown insect with long antenna's is inside of a basket. The basket has four sides with lines going across to form a trap of sorts and is quite tall. There are green leaves around the basket, with little blue flowers or berries on them.
Subject:	still life basket insect leaves
Credit:	Gift of Catharine Robb Whyte, O. C., Banff, 1979
Catalogue Number:	TaH.03.01

Images



This material is presented as originally created; it may contain outdated cultural descriptions and potentially offensive content. [Read more.](#)



Untitled

<https://archives.whyte.org/en/permalink/artifactwyp.03.027>

Artist: Peter Whyte (1905 – 1966, Canadian)

Title: Untitled

Date: 1924

Medium: graphite on conte paper

Dimensions: 63.0 x 48.5 cm

Description: A still life drawing of a strange head, probably from a sculpture. Profile of bald male head in graphite. Eyes appear closed. Strong outlines. To the right of the main figure is a lightly sketched bald head facing the viewer. Below and above sketch are various lightly drawn marks. In red conte a curly C in BRC. Watermarked: Circular STRATHMORE PAPARE. TLC: Thistle design. BRC: Peter White in Black Conte and below in Jan 18-24

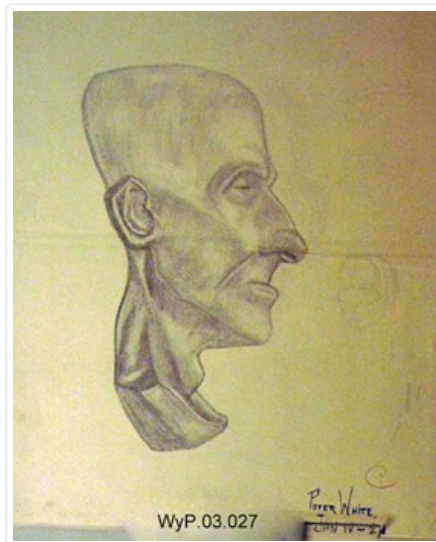
Subject: object

still life

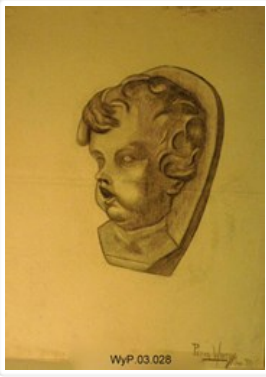
Credit: Gift of Catharine Robb Whyte, O. C., Banff, 1975

Catalogue Number: WyP.03.027

Images



This material is presented as originally created; it may contain outdated cultural descriptions and potentially offensive content. [Read more.](#)



Untitled

<https://archives.whyte.org/en/permalink/artifactwyp.03.028>

Artist: Peter Whyte (1905 – 1966, Canadian)

Title: Untitled

Date: 1924

Medium: graphite on conte paper

Dimensions: 63.3 x 48.0 cm

Description: A still life drawing of a baby's face from a sculpture. In the TRC is written 'In Memoriam / January 22nd 1924'. Face is 3/4 posed to viewer left. Mouth is open. Rendered in simplified dark outlines. Sculpture carved in high relief. Light sketches of indistinguishable to BR of main figure. BLC: Ruth Thrimvle red illegible words above name. WM: Circular stamp of STRATHMORE PAPARE with thistle designBRC: Peter White - Jan 30

Subject: object

still life

Credit: Gift of Catharine Robb Whyte, O. C., Banff, 1975

Catalogue Number: Wyp.03.028

Images



This material is presented as originally created; it may contain outdated cultural descriptions and potentially offensive content. [Read more.](#)



Pen And Ink Drawing

<https://archives.whyte.org/en/permalink/artifactpom.03.02>

Artist:	Priscilla Morgan Potts (1815 – , American)
Title:	Pen And Ink Drawing
Date:	1930
Medium:	pen and ink; watercolour on paper
Dimensions:	18.0 x 21.0 cm
Description:	A still life drawing of long red radishes on a scalloped edge plate, or perhaps a napkin, with blue edges. Reverse inscription in pencil reads "Drawn by Priscilla Morgan Potts whilst at boarding school / Washington Dela / 1830" "Priscilla" is also written on an adjacent edge in pencil.
Subject:	still life vegetables food
Credit:	Gift of Charles C. Reid, Banff, Alberta, 1986
Catalogue Number:	PoM.03.02

Images



This material is presented as originally created; it may contain outdated cultural descriptions and potentially offensive content. [Read more.](#)