



Alpine Skis

<https://archives.whyte.org/en/permalink/artifact108.04.0028%20a%2cb>

Title:	Alpine Skis
Date:	1920 – 1950
Material:	wood; metal
Dimensions:	7.5 x 210.0 cm
Description:	Wood skis, metal screwed on edges. Embossed behind the footplate "PRAGE". Some nails go right through the ski. Also a narrow piece of metal at 32. cm. down from the toe, screwed on repair piece. Metal cable binding "Chalet" and "Harvey E. Dodds". Bindings have been changed—not in good shape.
Subject:	activities sports winter skiing
Credit:	Gift of Catharine Robb Whyte, O. C., Banff, 1979
Catalogue Number:	108.04.0028 a,b

This material is presented as originally created; it may contain outdated cultural descriptions and potentially offensive content. [Read more.](#)



Alpine Skis

<https://archives.whyte.org/en/permalink/artifact108.04.0029%20a%2cb>

Title:	Alpine Skis
Date:	1920 – 1950
Material:	wood; metal; skin
Dimensions:	7.5 x 210.0 cm
Description:	Wood skis with screwed on metal edges. Skis are painted black and laminated on top. "BONNA Made in Norway" printed between toe and binding. There are insignia on toe and heel. Metal cable bindings are "Kandahar". They have a leather safety strap. Over the heel of the cable there is a light green rubber cable.
Subject:	activities sports winter skiing
Credit:	Gift of Catharine Robb Whyte, O. C., Banff, 1979
Catalogue Number:	108.04.0029 a,b

This material is presented as originally created; it may contain outdated cultural descriptions and potentially offensive content. [Read more.](#)



Alpine Skis

<https://archives.whyte.org/en/permalink/artifact108.04.0030%20a%2cb>

Title:	Alpine Skis
Date:	1920 – 1950
Material:	wood; skin; plastic
Dimensions:	7.0 x 180.0 cm
Description:	HEAD STANDARD skis with metal edges on heel and toe. Metal cable bindings, "SECURUS-RAMY" Made in France. Leather safety straps. Red rubber heel cable.
Subject:	sports winter skiing
Credit:	Gift of Catharine Robb Whyte, O. C., Banff, 1979
Catalogue Number:	108.04.0030 a,b

This material is presented as originally created; it may contain outdated cultural descriptions and potentially offensive content. [Read more.](#)



Alpine Skis

<https://archives.whyte.org/en/permalink/artifact108.04.0031%20a%2cb>

Title: Alpine Skis
Date: 1920 – 1950
Material: wood; metal; skin
Dimensions: 7.5 x 204.0 cm
Description: Wood touring skis with screw on metal edges. Metal name piece, shaped like a shield "CHALET". "Harvey E. Dodds Ltd." Metal cable bindings with cable missing. Leather toe binding.
Subject: activities
sports
winter
skiing
Credit: Gift of Catharine Robb Whyte, O. C., Banff, 1979
Catalogue Number: 108.04.0031 a,b

This material is presented as originally created; it may contain outdated cultural descriptions and potentially offensive content. [Read more.](#)



Alpine Skis

<https://archives.whyte.org/en/permalink/artifact108.04.0035%20a%2cb>

Title: Alpine Skis
Date: 1920 – 1950
Material: wood; metal
Dimensions: 7.5 x 213.0 cm
Description: Wood ski with metal screw on edges. Stamp on inside toe piece "Northland US St. Paul Minn". Painted on in handwriting "D.W." Metal binding "Skirite".
Subject: activities
sports
winter
skiing
Dave White
Credit: Gift of Catharine Robb Whyte, O. C., Banff, 1979
Catalogue Number: 108.04.0035 a,b

This material is presented as originally created; it may contain outdated cultural descriptions and potentially offensive content. [Read more.](#)

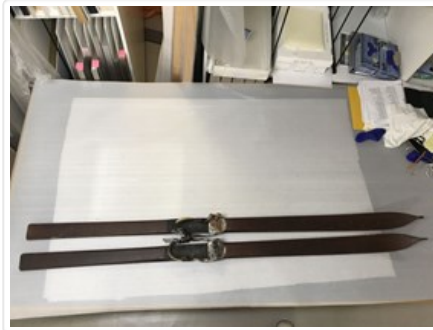


Alpine Skis

<https://archives.whyte.org/en/permalink/artifact108.04.0034%20a%2cb>

Title:	Alpine Skis
Date:	1920 – 1950
Material:	wood; metal; skin
Dimensions:	7.5 x 200.0 cm
Description:	Wood ski, nice long curved tip, groove decoration, "ASH" written on. Metal and leather bindings "Harvey E. Dodds"
Subject:	activities sports winter skiing
Credit:	Gift of Catharine Robb Whyte, O. C., Banff, 1979
Catalogue Number:	108.04.0034 a,b

Images



This material is presented as originally created; it may contain outdated cultural descriptions and potentially offensive content. [Read more.](#)



Astrakhan

<https://archives.whyte.org/en/permalink/artifact103.04.0011>

Title:	Astrakhan
Date:	1920 – 1950
Material:	hair, sheep; fibre
Dimensions:	15.0 x 4.0 x 28.5 cm
Description:	A rectangular, narrow, straight sided hat of curly black lamb's wool. There is a crease down the centre of the crown, and a yellow wool flap that attaches to each side with hook snaps. The hat has a quilted black satin lining.
Subject:	winter social customs
Credit:	Gift of Pearl Evelyn Moore, Banff, 1979
Catalogue Number:	103.04.0011

Images



This material is presented as originally created; it may contain outdated cultural descriptions and potentially offensive content. [Read more.](#)



Athletic Medal

<https://archives.whyte.org/en/permalink/artifact103.09.1244>

Title:	Athletic Medal
Date:	1922
Material:	metal
Dimensions:	3.0 radius cm
Description:	A circular, 10K gold medal with a ram's head and neck, around which is printed "BANFF WINTER SPORTS", on one side and on the other "1922" "SENIOR HOCKEY" 10K B.M. CO.
Subject:	sports winter hockey Banff
Credit:	Gift of Horace Baker, Banff , 2011
Catalogue Number:	103.09.1244

Images



This material is presented as originally created; it may contain outdated cultural descriptions and potentially offensive content. [Read more.](#)



Athletic Medal

<https://archives.whyte.org/en/permalink/artifact103.09.1071%20a%2cb>

Title:	Athletic Medal
Date:	1924 – 1931
Material:	metal
Dimensions:	3.4 cm
Description:	Two sports medals (a) BBC 1931 "Men's Club War Canoe", 3.4 high, round silver medal. Canoe on front, wreath on back. (b) Banff WC 1924 "Ladies Championship", 3.7 high. Fancy rectangular gold medal, hockey player on front with three maple leaves underneath.
Subject:	sports Jim Boyce canoeing hockey Banff Winter Carnival Banff Winter Sports Association
Credit:	Gift of Dorothy Boyce, Banff, 1985
Catalogue Number:	103.09.1071 a,b

Images



This material is presented as originally created; it may contain outdated cultural descriptions and potentially offensive content. [Read more.](#)



Athletic Medal

<https://archives.whyte.org/en/permalink/artifact103.09.1011%20a%2cb>

Title:	Athletic Medal
Date:	1921 – 1926
Material:	metal
Description:	Two small metal athletic medals. (a) 1926 girls' race, round, silver coloured, round gold coloured crest in centre "Banff 1926", snowshoer in forest. On back "100 yds Girls under 14 2nd. (b) 1921 Bankhead Park League. Octagonal shaped gold coloured, crest in centre has a soccer player, wreath below. On back "Bankhead F.C. Natl Park League Winners 1921 A. Wright".
Subject:	sports winter summer Bankhead
Credit:	Gift of W. J. Wright, Kamloops, 1969
Catalogue Number:	103.09.1011 a,b

Images



This material is presented as originally created; it may contain outdated cultural descriptions and potentially offensive content. [Read more.](#)