



Animal Figurine

<https://archives.whyte.org/en/permalink/artifact107.02.1022>

Title: Animal Figurine
Date: 1950 – 1980
Material: wood
Description: Crudely carved horse with the features highlighted by burning the wood.
Subject: crafts
woodworking
carving
animal, horse
Credit: Gift of Unknown, 1968
Catalogue Number: 107.02.1022

This material is presented as originally created; it may contain outdated cultural descriptions and potentially offensive content. [Read more.](#)



Animal Sculpture

<https://archives.whyte.org/en/permalink/artifact107.01.0182%20a%2cb>

Title:	Animal Sculpture
Date:	n.d.
Material:	wood
Dimensions:	1.2 x 1.0 cm
Description:	Two miniature carved wooden bears. The bears are in a seated position.
Subject:	Whyte home miniature woodworking carving animals
Credit:	Gift of Catharine Robb Whyte, O. C., Banff, 1979
Catalogue Number:	107.01.0182 a,b

Images



This material is presented as originally created; it may contain outdated cultural descriptions and potentially offensive content. [Read more.](#)



Breast Drill

<https://archives.whyte.org/en/permalink/artifact104.49.0009>

Title:	Breast Drill
Date:	1875 – 1925
Material:	metal; wood
Dimensions:	45.8 x 5.6 x 28.0 cm
Description:	<p>Long, black, cast iron body with breast rest on top, turning handle on large green wheel, holding handle on opposite side, and large chuck at bottom. Body cast as strong frame to hold gears and wheels. Breast rest is slightly cupped plate across top. Approximately half way down, through heavy tube cast into body is fastened large green wheel with rack gear on back, tying into pinion gear around the shaft of the body at the wheel's lower extreme. Large wooden handle fitted to wheel by metal arm which adjusts in length by large metal screw. Below pinion gear on opposite side from wheel is another fixed holding handle standing horizontally from the shaft. Bottom of shaft holds large chuck for bits. On side of shaft behind wheel is small spirit level. Marks on chuck "Millers Falls, Mass. USA Miller's Falls Tools 12A"</p>
Subject:	<p>commercial</p> <p>carpentry</p> <p>woodworking</p> <p>Sam Ward</p>
Credit:	Gift of Catharine Robb Whyte, O. C., Banff, 1979
Catalogue Number:	104.49.0009

Images



This material is presented as originally created; it may contain outdated cultural descriptions and potentially offensive content. [Read more.](#)



Burnt Wood Picture

<https://archives.whyte.org/en/permalink/artifact107.02.1031%20a-d>

Title:	Burnt Wood Picture
Date:	1960 – 1980
Material:	wood
Description:	Four pieces of wood decorated by burning.a) Round decorative frame with a woman's profile and shoulders.b) Rectangular piece of wood with a woman wearing a green cape on a blond horse.c) Oval decorative frame with a black and white reproduction photograph of the boathouse on the Bow River.d) Oval decorated with holly leaves and berries on a textured background.
Subject:	households hobbies crafts woodworking carving
Credit:	Gift of Ken Campbell, Qualicum Beach, 1987
Catalogue Number:	107.02.1031 a-d

Images



This material is presented as originally created; it may contain outdated cultural descriptions and potentially offensive content. [Read more.](#)



Bust

<https://archives.whyte.org/en/permalink/artifact107.02.1014%20a-c>

Title:	Bust
Date:	1920 – 1950
Material:	wood
Description:	Three hand-carved busts of light polished wood on dark brown turned bases.a) Man with cowboy hat. Bright pink markings on the bottom are illegible.b) Woman with long braids wrapped around her head. Bright pink markings on the bottom are barely legible "Hand carved by Augustine..."c) Young woman with long hair and a demure smile. The bottom of this bust is marked "Hand Carved by Augustin Oberdmeryani" in bright pink.
Subject:	crafts woodworking carving art artists Augustin Oberdmeryani Jimmy Simpson Billie Simpson Mary Simpson
Credit:	Gift of James (Sr.) Simpson, 1968
Catalogue Number:	107.02.1014 a-c

Images



This material is presented as originally created; it may contain outdated cultural descriptions and potentially offensive content. [Read more.](#)



Carpenter Ruler

<https://archives.whyte.org/en/permalink/artifact104.49.1013>

Title:	Carpenter Ruler
Date:	n.d.
Material:	wood; brass
Dimensions:	1.5 x 61 cm
Description:	Wood ruler with brass hinges and brass along the edges. Ruler measures in inches, up to 24. 1 to 12 to centre, 13 to 14 to end. Central hinge and a hinge on either side folds the ruler in thirds.
Subject:	woodworking carpentry Sam Ward
Credit:	Gift of J. F. Whitworth, Canmore, 2012
Catalogue Number:	104.49.1013

Images



This material is presented as originally created; it may contain outdated cultural descriptions and potentially offensive content. [Read more.](#)

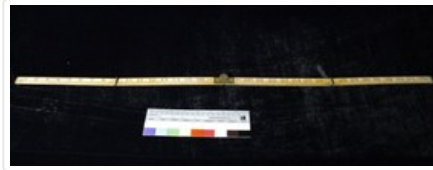


Carpenter Ruler

<https://archives.whyte.org/en/permalink/artifact104.49.1014>

Title:	Carpenter Ruler
Date:	n.d.
Dimensions:	92 cm
Description:	Wood ruler with brass hinges. Marked "Made in USA UFKin." Measures inches up to 36. Numbers on surface are large. When folded ruler is 24 cm in length. Central hinge and a hinge on either side folds the ruler in thirds.
Subject:	woodworking carpentry Sam Ward
Credit:	Gift of J. F. Whitworth, Canmore, 2012
Catalogue Number:	104.49.1014

Images



This material is presented as originally created; it may contain outdated cultural descriptions and potentially offensive content. [Read more.](#)



Carpenter Ruler

<https://archives.whyte.org/en/permalink/artifact104.49.1015>

Title:	Carpenter Ruler
Date:	n.d.
Material:	wood; brass
Dimensions:	93 cm
Description:	Wood ruler with brass hinges. Measures inches up to 34. When folded ruler is 23 cm in length. Central hinge and a hinge on either side folds the ruler in thirds. Two small pins on the edges secure the folded ruler in place.
Subject:	woodworking carpentry Sam Ward
Credit:	Gift of J. F. Whitworth, Canmore, 2012
Catalogue Number:	104.49.1015

Images



This material is presented as originally created; it may contain outdated cultural descriptions and potentially offensive content. [Read more.](#)



Carving Gouge

<https://archives.whyte.org/en/permalink/artifact104.49.1011>

Title:	Carving Gouge
Date:	prior to 1986
Material:	metal
Dimensions:	2.5 x 26.2 cm
Description:	One piece cast metal gouge. 5.5 cm long 'spoon' tapers from 2.5 to a point. Handle is solid, probably was inserted into a wood handle.
Subject:	hobbies woodworking Lawrence Grassi
Credit:	Gift of Patricia Farrand, Canmore, 1986
Catalogue Number:	104.49.1011

Images



This material is presented as originally created; it may contain outdated cultural descriptions and potentially offensive content. [Read more.](#)



Cigar Case

<https://archives.whyte.org/en/permalink/artifact103.08.0419>

Title:	Cigar Case
Date:	n.d.
Material:	wood
Dimensions:	14.0 x 6.4 cm
Description:	Wooden cigar case with a woven, embroidery-like pattern. Case consists of two parts with an inner part that slides out. The inner part of the case has a stripe pattern. Case came with a letter addressed to Catharine and Peter from a person named Susan that says the case is "Tonbridge work."
Subject:	Whyte home woodworking smoking
Credit:	Gift of Catharine Robb Whyte, O. C., Banff, 1979
Catalogue Number:	103.08.0419

Images



This material is presented as originally created; it may contain outdated cultural descriptions and potentially offensive content. [Read more.](#)