



CAMP SCENE, WATERFOWL LAKE



BOW LAKE LOOKING NORTH



MT. WILSON FROM THE MISTAYA RIVER



MT. HECTOR FROM BOW LAKE



NUM-TI-GAH LODGE, BOW LAKE



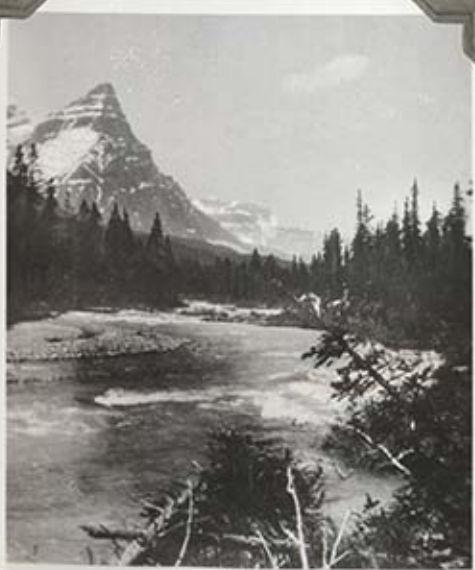
THE LOUNGE, BOW LODGE



BOW GLACIER and MT THOMPSON



RIDING AT BOW LAKE



MT. CHEPPAN



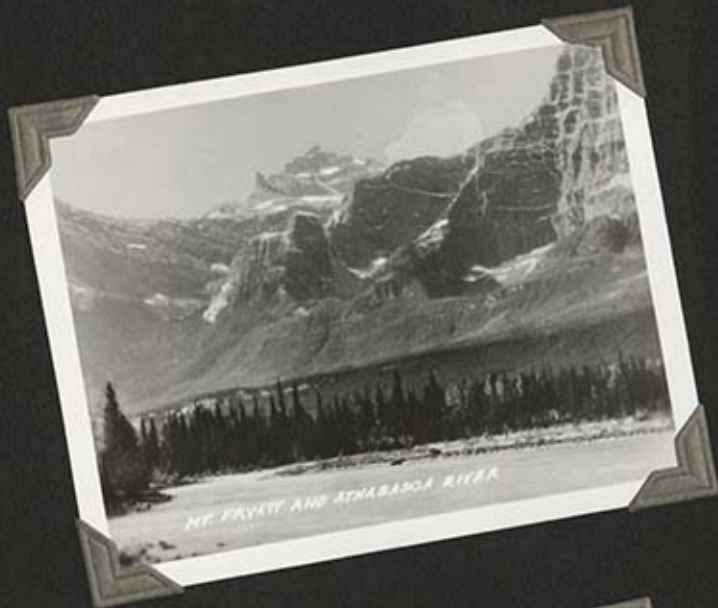
BOW LAKE LOOKING SOUTH



MT. EDITH CAVELL



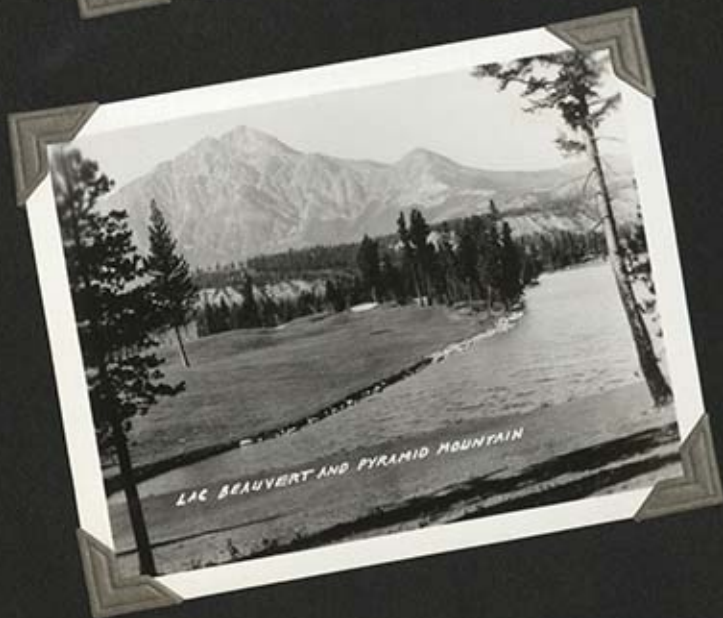
ATHABASCA FALLS



MT. FYATT AND ATHABASCA RIVER



MT. ESPLANADE, POCONONTAS DRIVE



LAC BEAUVERT AND PYRAMID MOUNTAIN



MT. KERMESLIN AND ATHABASCA RIVER



JASPER RAVEN TOTEM POLE



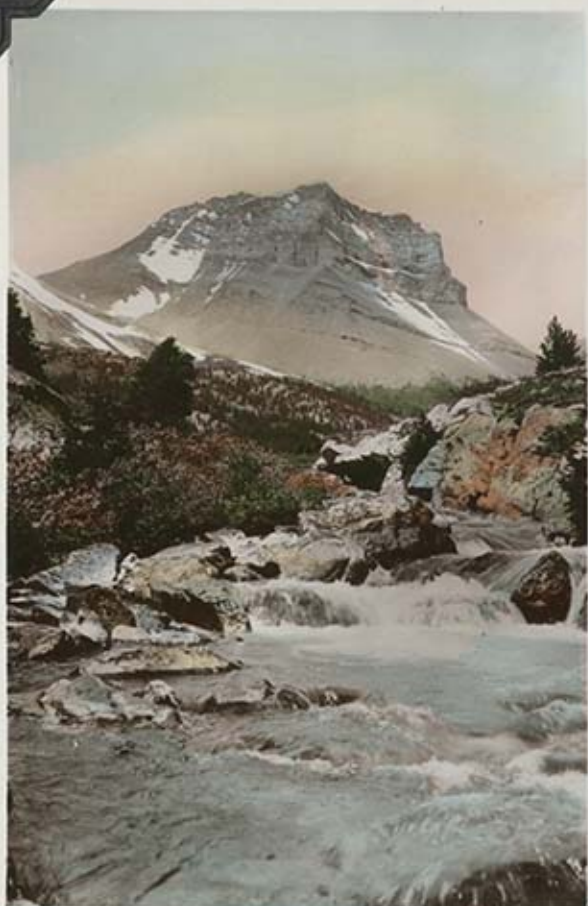
MALIGNE CANYON



THE RAMPARTS AND AMETHYST LAKE



MALIGNE LAKE



MT. COLEMAN FROM SUNSET PASS
ON THE BANFF-JASPER HIGHWAY

Jasper-Banff Series No. 14



Athabasca Falls Taylor
No. 228 Jasper National Park



THE TONGUE OF ATHABASCA GLACIER FROM THE JASPER-BANFF HIGHWAY

Jasper-Banff Series No. 4



THE ATHABASCA GLACIER, COLUMBIA ICEFIELD, FROM THE JASPER-BANFF HIGHWAY

Jasper-Banff Series



UPPER SUNWAPTA FALLS, ALBERTA,
ON THE JASPER-BANFF HIGHWAY

Jasper-Banff Series No. 18



LOWER SUNWAPTA FALLS, ALBERTA,
ON THE JASPER-BANFF HIGHWAY

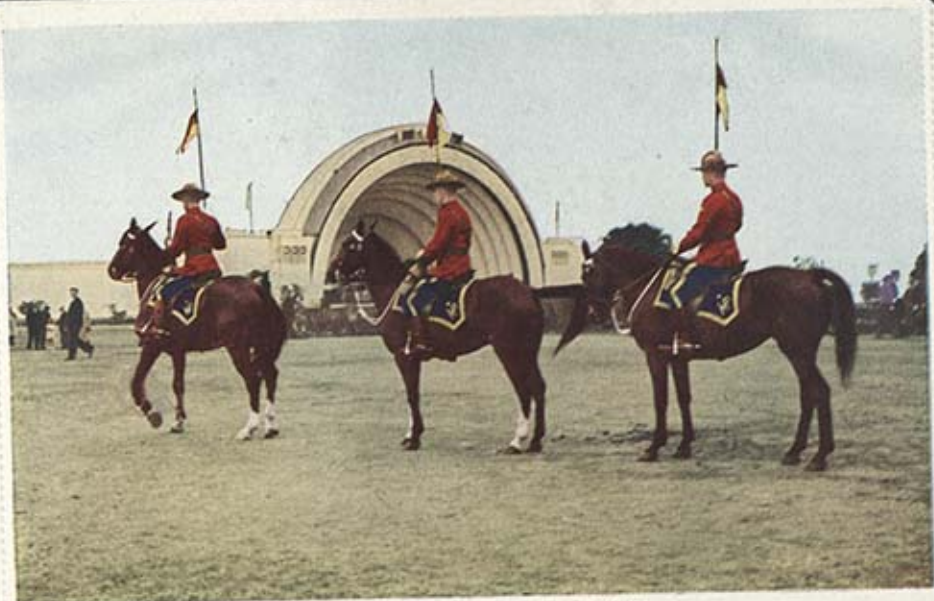
Jasper-Banff Series No. 17



116.252

Miette Hot Springs Pool, Jasper Park

Taylor



(29)

ROYAL CANADIAN MOUNTED POLICE



(404)

MOUNT RUNDLE AND VERMILION LAKE, ROCKY MOUNTAINS, CANADA



Bow Valley

From Color Photo by Harvie



Mount Rundle

From Color Photo by Harvie



Moraine Lake

From Color Photo by Harrison



Mt. Eisenhower

From Color Photo by Harrison



From Color Photo by Marvin

Lake Louise



From Color Photo by Marvin

Bear Lake





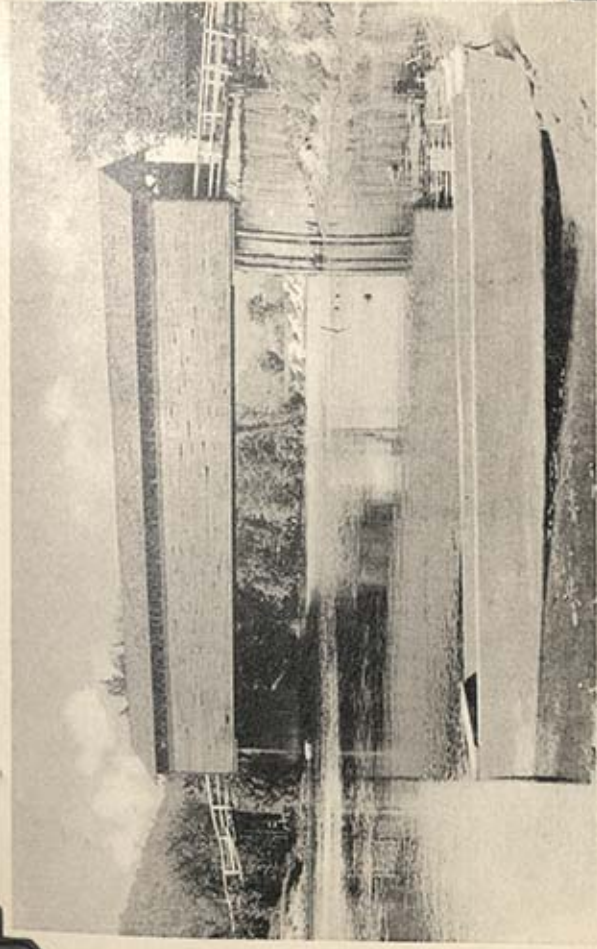




Lac Duhamel St-Jovite Qué



Main Street, St. Jovite, Quebec.



The Old Covered Bridge, at St. Jovite, Quebec.



LAC-MANITOU-
IVRY-NORTH-46-



Floating Bridge, Chemong Lake near Peterborough, Ontario.—34.



FRASER RIVER BRIDGE.
NEW WESTMINSTER, B. C., CANADA



Government House, Victoria, B.C.
Where their Majesties King George VI and Queen Elizabeth
Stayed during The Royal Visit May 1939.

EDWARD COODRILL



EDWARD COODRILL





Blewitt Pass

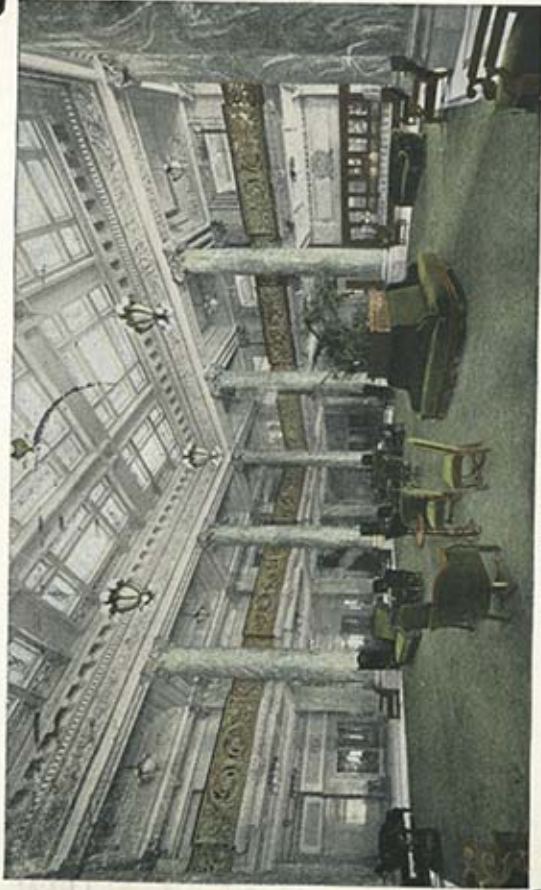
Aug 13
61



Holly Chucksaw Drive

Aug 13
268

Motor road here yesterday. P. B.



LOBBY, HOTEL UTAH, SALT LAKE CITY

7218. Horseshoe Curve, San Luis Obispo, S. P. R. R., Cal.



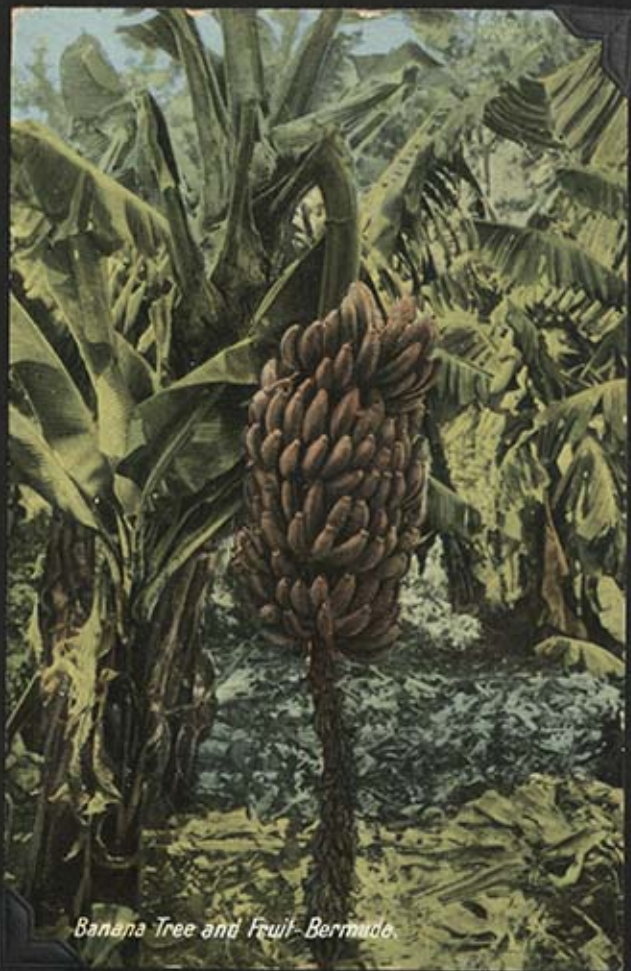


Shaw Park Hotel

Ocho Rios, Jamaica B.W.I.

VIEW OF HONOLULU AND HARBOR FROM THE AIR, HONOLULU, T.H.





Banana Tree and Fruit- Bermuda.



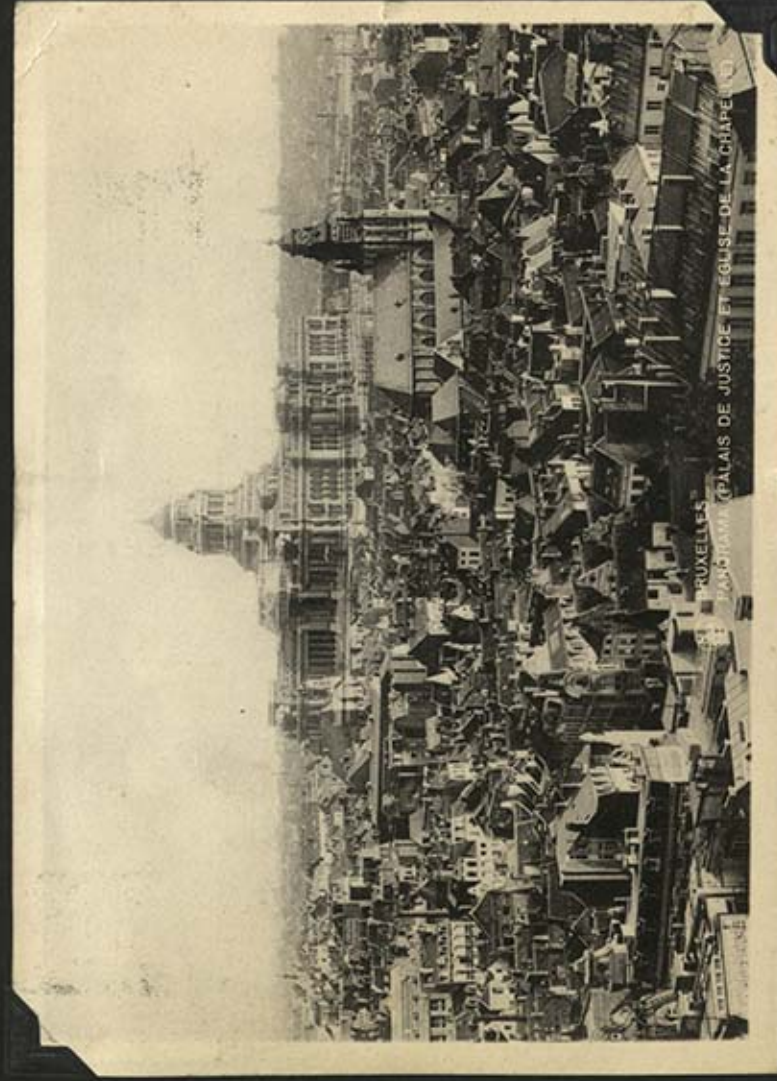
FIREWALKING, FIJI

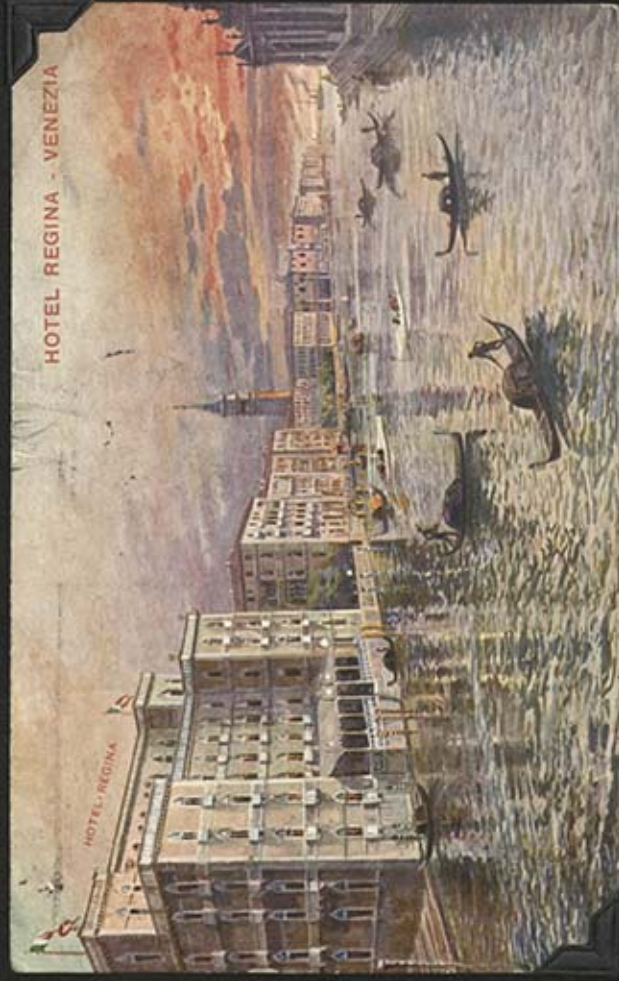
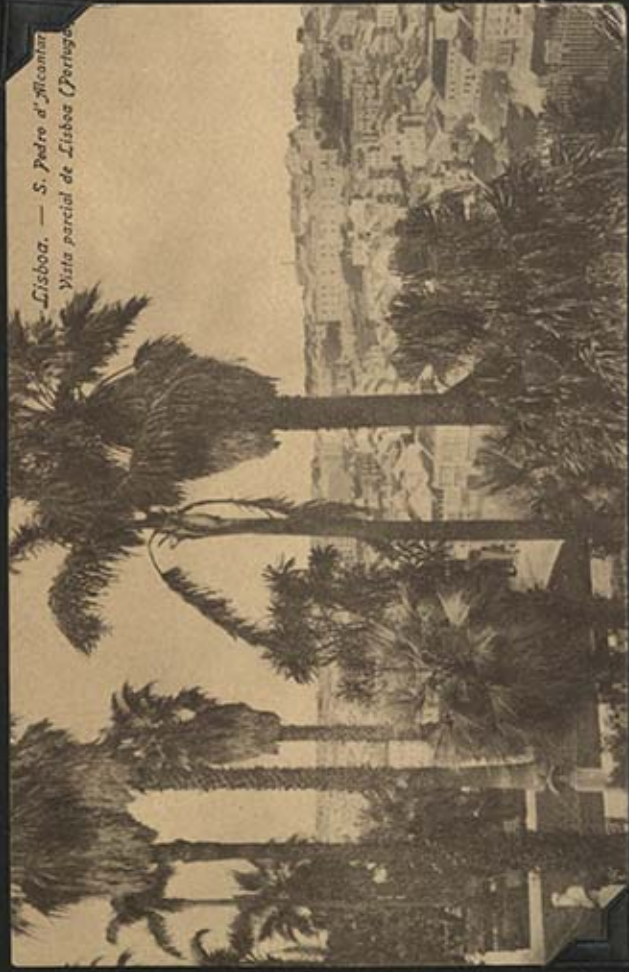
1162 - Bridge Street, Sydney.



Axenstrasse, Gallerie mit Urielstock FINE motor roads every where in Uri





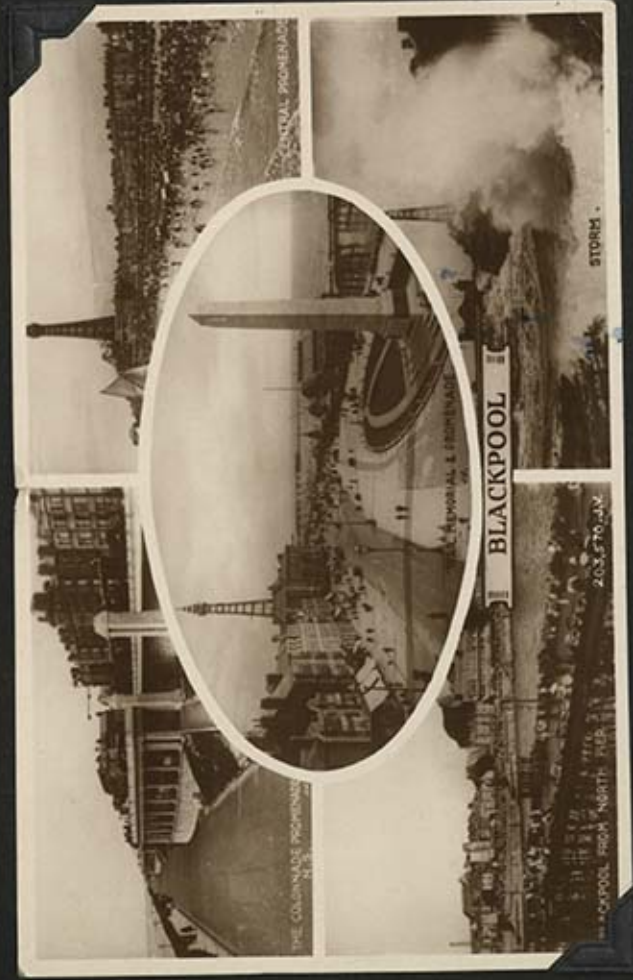


SCARBOROUGH—WRECK OF THE BOXER



Peasholm Lake, Scarborough





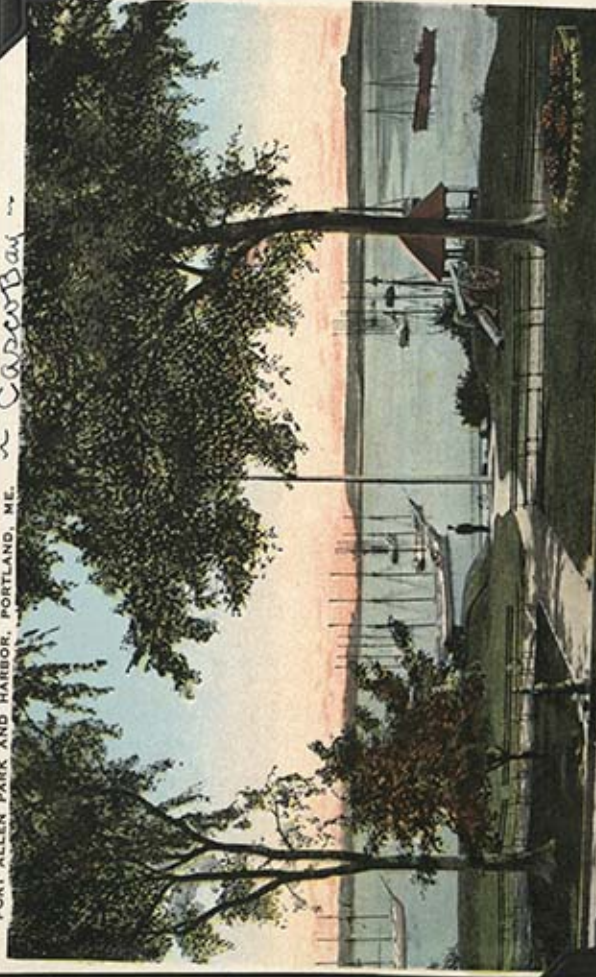






FORT ALLEN PARK AND HARBOR, PORTLAND, ME.

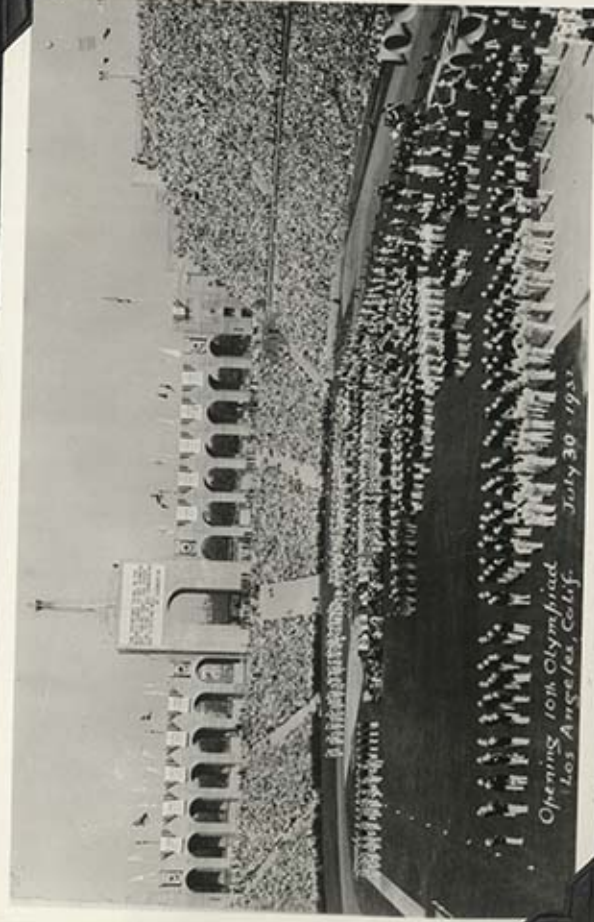
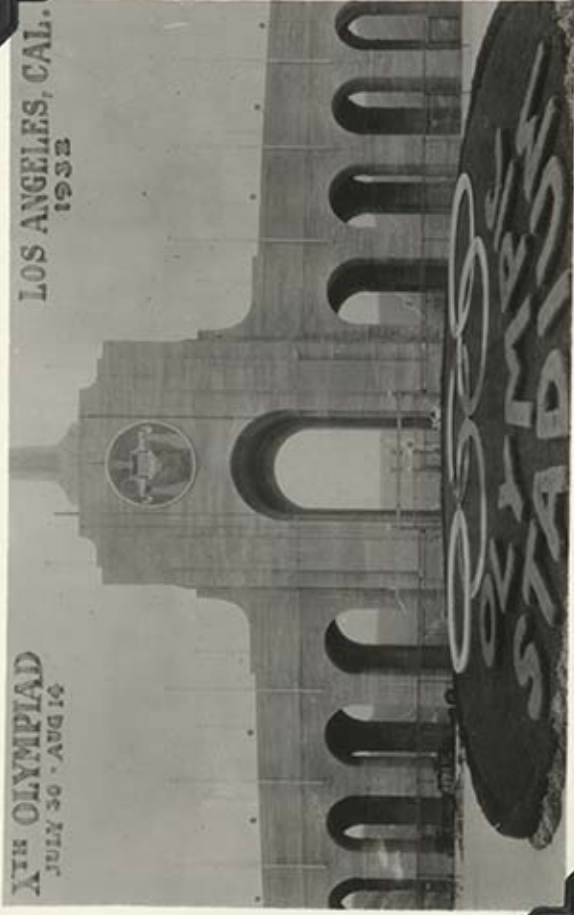
~ Casco Bay ~



~ Eastern Promenade ~ Islands in the distance. 365 of them

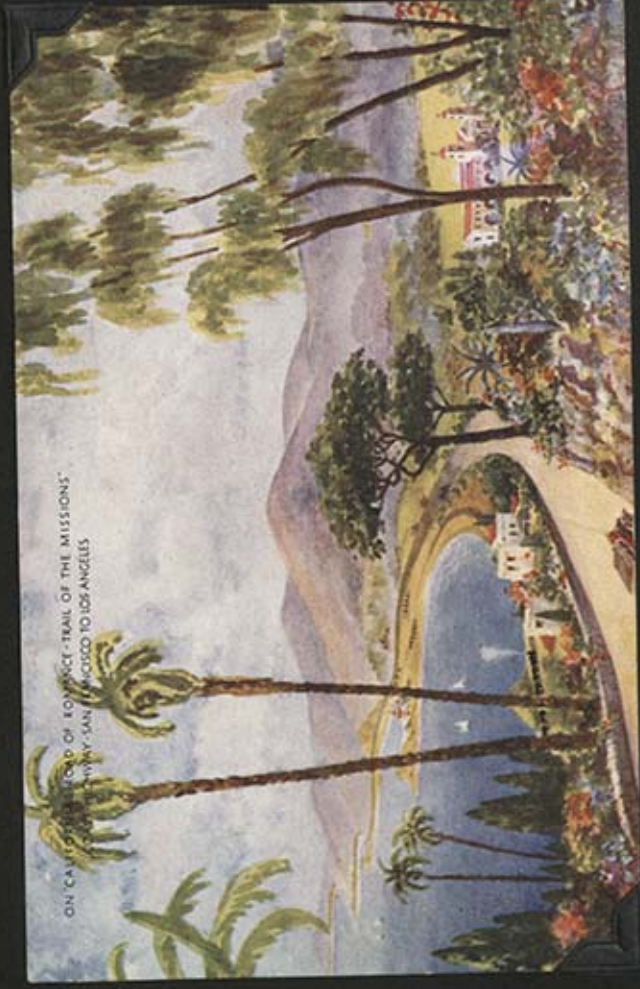
XTH OLYMPIAD
JULY 30 - AUG 14

LOS ANGELES, CAL.
1932



Opening, 10th Olympiad
Los Angeles, Calif. July 30 - 1932









FISHERMAN'S CAVE, BERNSTEIN'S FISH GROTTO, SAN FRANCISCO, CALIF.

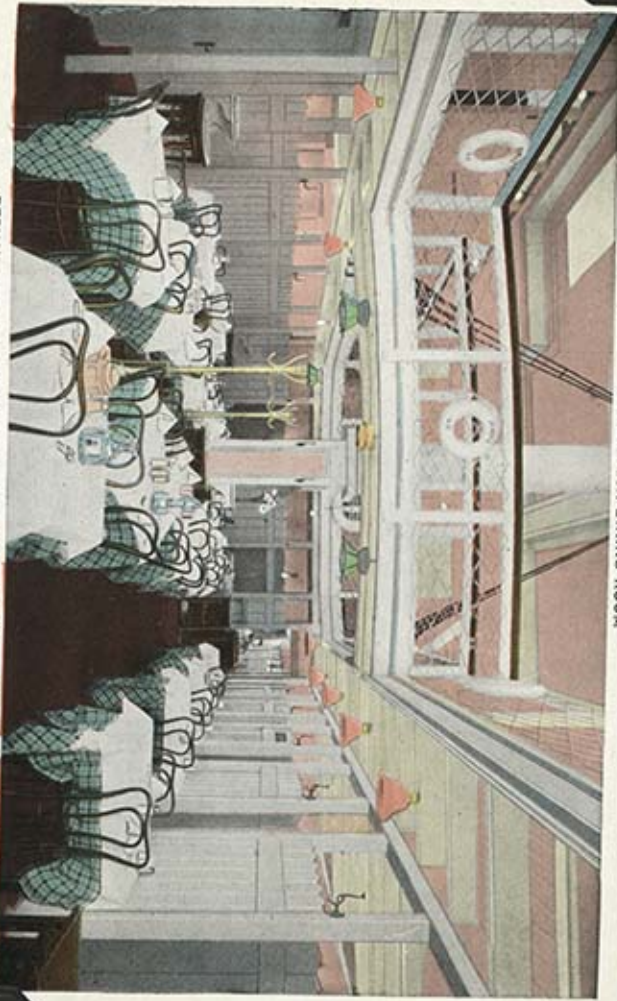


THE GROTTO, BERNSTEIN'S FISH GROTTO, SAN FRANCISCO, CALIF.



0A4580

SUN DECK AT BERNSTEIN'S FISH GROTTTO, SAN FRANCISCO, CALIF.



UPPER DECK DINING ROOM

BERNSTEIN'S FISH GROTTTO, 123 POWELL STREET, SAN FRANCISCO, CAL.



*Casino & Harbor -
Catalina Island, Calif.*

1939



*St. Catherine Hotel -
Catalina Island, Calif.*

1984

X-56 CAMPANILE AND GALERIA OF NEW HOTEL, HOTEL AGUA CALIENTE, TIJUANA, MEXICO



4111-29

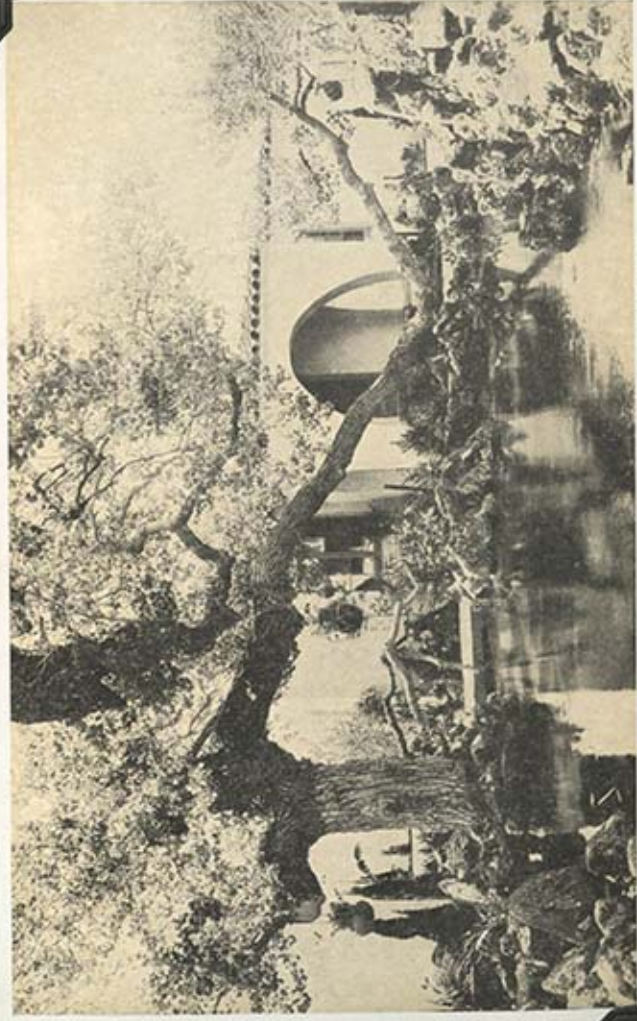
178B:—The Plunge at Agua Caliente Spa, Hotel Agua Caliente, Tijuana B. C. Mexico



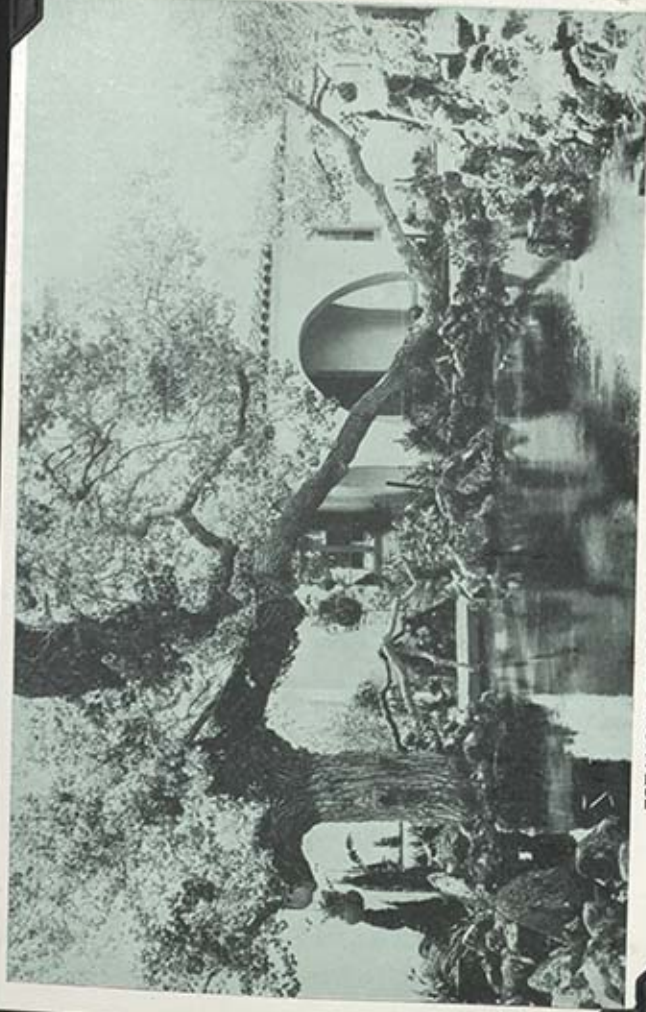
35868



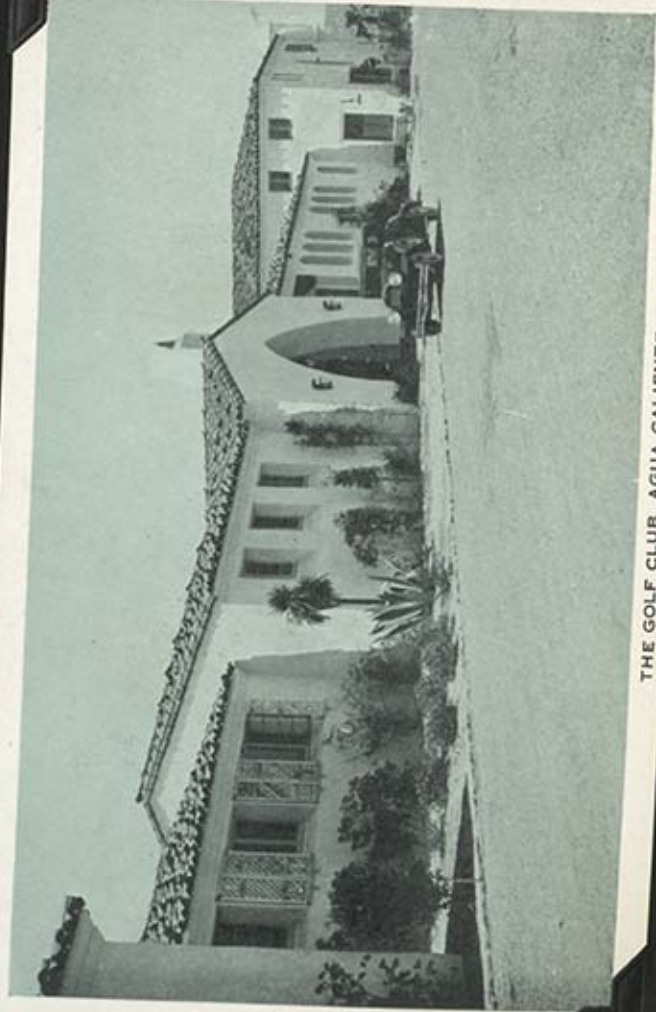
THE AGUA CALIENTE SWIMMING POOL



ESTANQUE DE AGUA Y CASA, HOTEL AGUA CALIENTE



ESTANQUE DE AGUA Y CASA, HOTEL AGUA CALIENTE



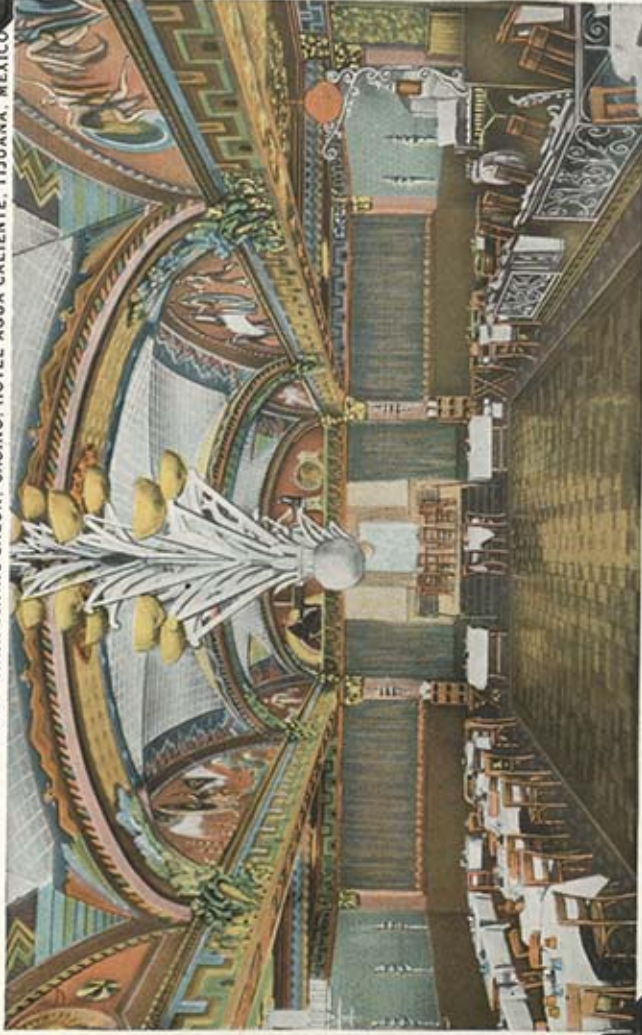
THE GOLF CLUB, AGUA CALIENTE

X-50 ELABORATE INTERIOR OF CASINO AND FAMOUS GOLD BAR, HOTEL AGUA CALIENTE, TIJUANA, MEXICO



1A-14660

X-49 MAIN DINING SALON, CASINO, HOTEL AGUA CALIENTE, TIJUANA, MEXICO



4104-29

4336 MAIN ENTRANCE, HOTEL DEL CORONADO, CORONADO, CALIFORNIA



117487

4337 PATIO, HOTEL DEL CORONADO, CORONADO, CALIFORNIA.

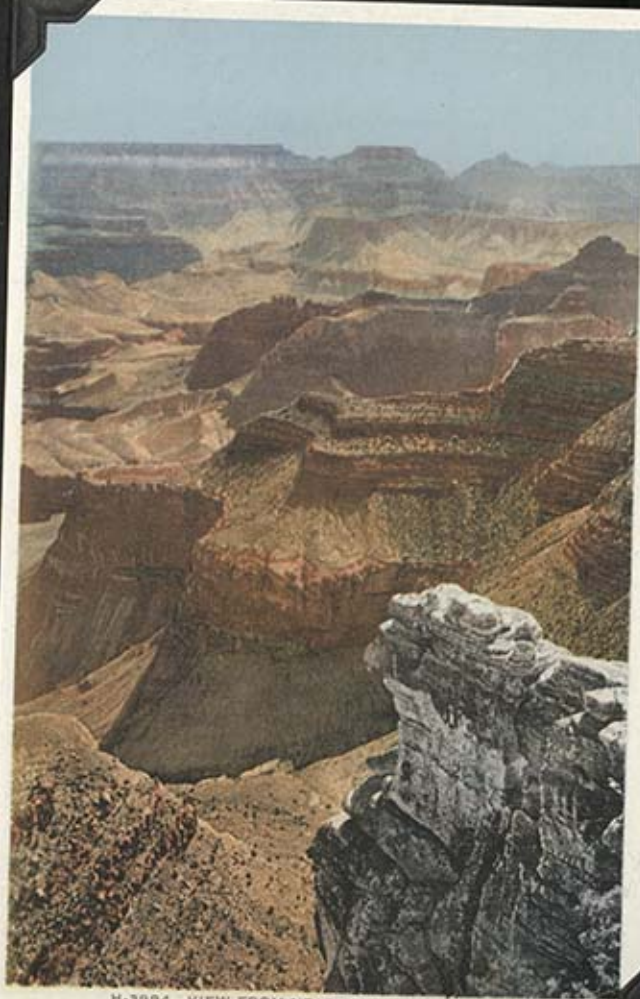


117488



7 NORTH FROM PIMA POINT, GRAND CANYON NATIONAL PARK, ARIZONA.

COPR. FRED HARVEY

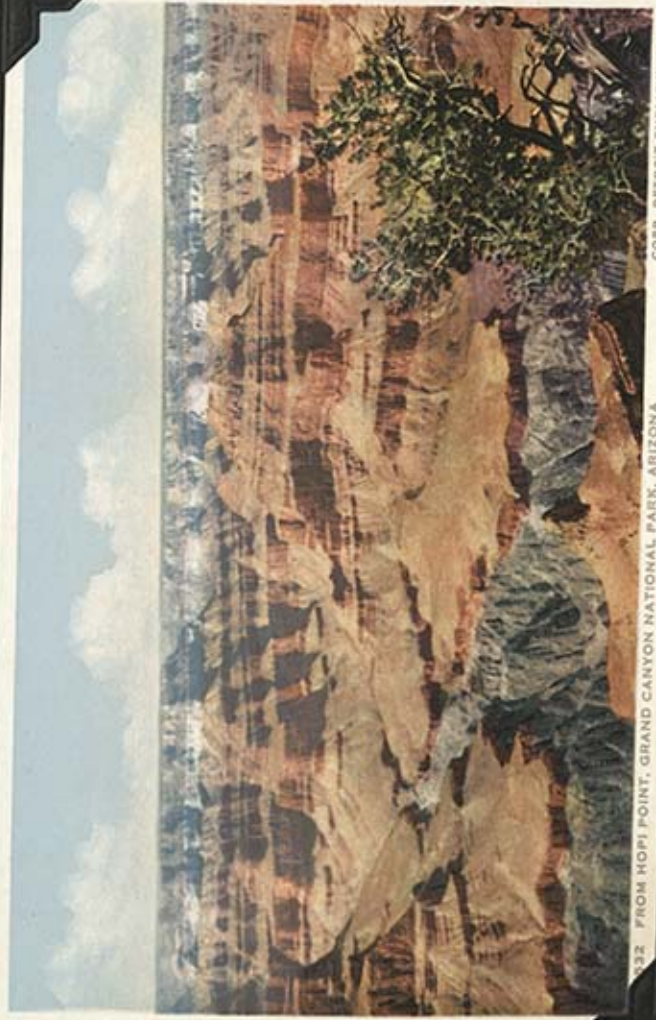


M-3994 VIEW FROM NEAR POWELL MEMORIAL,
GRAND CANYON NATIONAL PARK, ARIZONA.



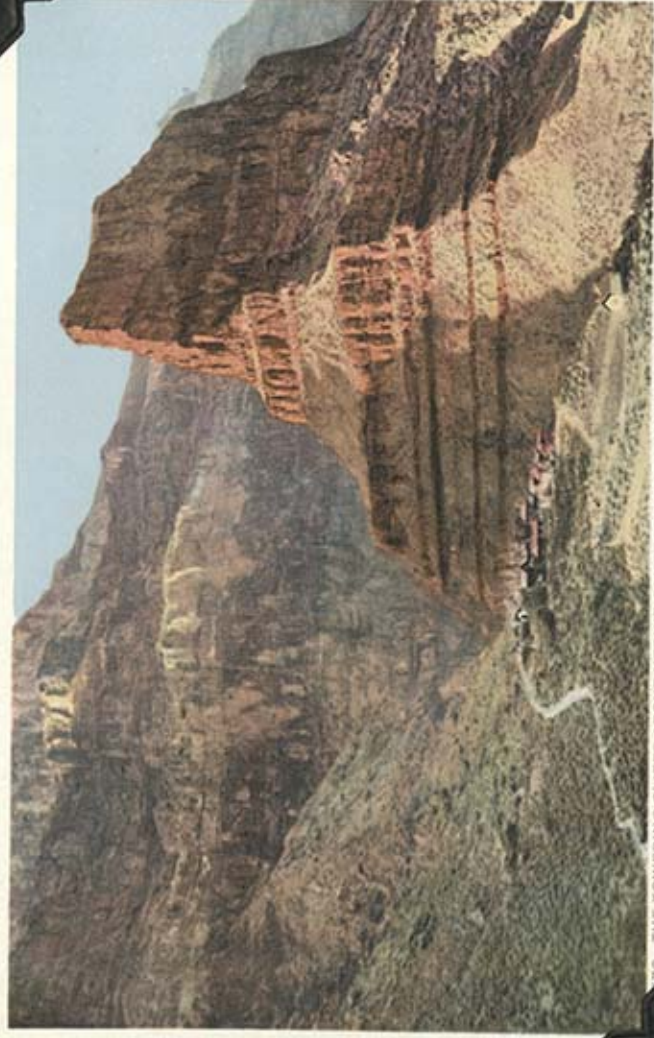
COPR. FRED

320 LOOKING NORTHEAST FROM MOJAVE POINT, GRAND CANYON NATIONAL PARK, ARIZONA.

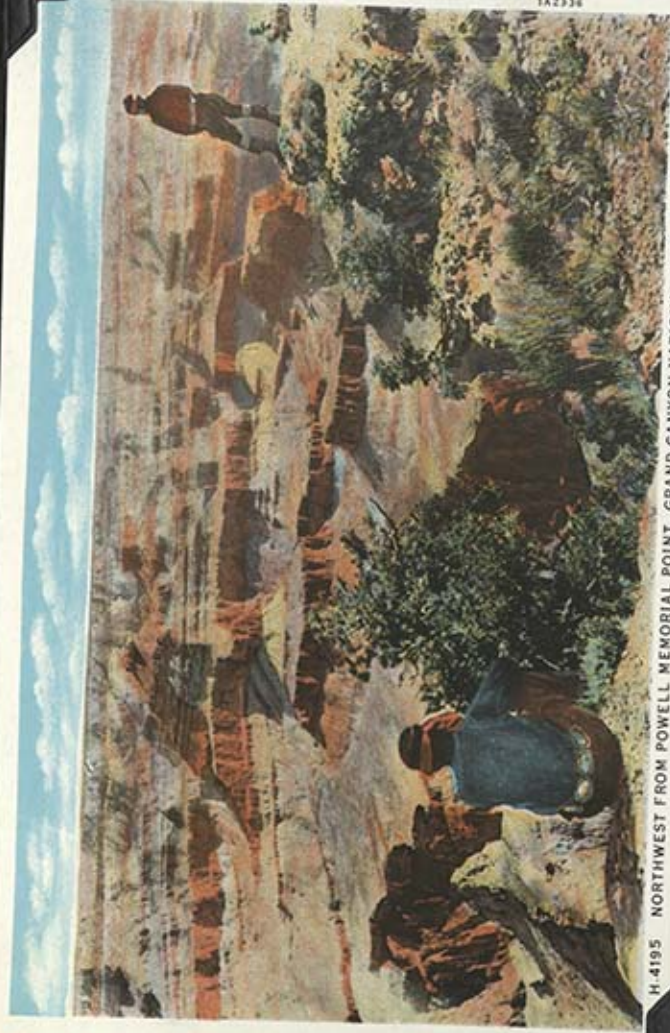


322 FROM HOPI POINT, GRAND CANYON NATIONAL PARK, ARIZONA.

COPR. DETROIT PUBLISHING CO.



70 THE TOWERING CLIFFS ABOVE HERMIT CAMP, GRAND CANYON NATIONAL PARK, ARIZONA.



H.4195 NORTHWEST FROM POWELL MEMORIAL POINT, GRAND CANYON NATIONAL PARK, ARIZONA



36. ON HERMIT RIM DRIVE NEAR MOJAVE POINT, GRAND CANYON NATIONAL PARK, ARIZONA.



H-3152 THE ARCH AT HERMIT'S REST, GRAND CANYON NATIONAL PARK, ARIZONA.



7 THE PORCH AT HERMIT'S REST, GRAND CANYON NATIONAL PARK, ARIZONA.



THE FIRE PLACE, HERMIT'S REST, GRAND CANYON NATIONAL PARK, ARIZONA.



Polson, Montana
© Meier's Studio





233 - MILANO - PIAZZA DEL DUOMO





A. C. LEIGHTON, R.B.A., A.R.C.A.
Calgary Alta., and Crescent Beach, B.C.

MEMBER:

Royal Society of British Artists.
Royal Canadian Academy.
Ridley Art Club.
Canadian Water Colour Society.
Imperial Arts League.

EXHIBITOR:

Royal Academy.
Royal Society of British Artists.
Royal Institute of Painters in Water
Colour.
Royal Canadian Academy.
Paris Salon.

Autobiography

Born in Hastings, England, Leighton from an early age showed such a decided talent that there was no doubt as to a brilliant career. At 14, after winning all the prizes and scholarships, he embarked on a serious study of art at Hastings, and

later in London. Two years later, a temporary enthusiasm for flying put a stop to his studies, which were resumed immediately after the Armistice. He joined the well-known firm of Vickers Limited as a commercial artist and designer; soon after he established a studio of his own in London. His work found immediate favor with hanging committees of the principal exhibitions, and received flattering recognition of the critics and collectors.

The successful handling of commissions for the Canadian Pacific Railway was responsible for his visit to the Dominion in 1925, and the western life had such an appeal to him that he decided to remain.

He came, he saw, he was conquered by the splendor and beauty of the western country. He has caught in an amazing way, the very spirit of the West. The first quality that strikes one in his paintings is a great ability to capture life, atmosphere and action; a wonderful sense of illimitable vastnesses and the immensity of great mountains. His work is admired and reproduced in all the leading international periodicals. He has built several studio homes, and at present has one on the shores of the Pacific near Vancouver, and one at Calgary, Alberta, where the beloved Rockies seem by a stone's throw distant, and Leighton is a true Western Canadian.

Many of his works have been purchased for public galleries and permanent collections.

Interest in Canadian Art and his fellow craftsmen has been Leighton's chief interest, and from his first Summer School near Banff has grown the Banff School of Fine Arts, and the Alberta Society of Artists, of which he is Honorary President.

Leaves from my Note Book

An Outlaw

A bad start for a painting trip. My new horse would have pleased the stampede crowds at a rodeo, but the third time he threw me I had a headache that prevented me from seeing any beauty whatsoever in the mountains for a week.

Wanderers

I was anxious to reach a base camp and pushed on until everyone was tired out, including the horses. In the morning we found that the horses had gone back down the trail; it was two days before Pete turned up with them again.

Rough Riding

Away from the hotdog stands and the cheering grandstand, the exciting and strenuous work of breaking the broncos on the Ranch is just an everyday chore for Pete and the boys, but the work must be done for horses are needed for the long weeks in the mountains, hunting new painting grounds.

Early Morning Visitors

I had left the camp at daybreak to do an early sketch of the dawn light on the mountains, and when I returned found we had visitors. They were an amusing sight as they scampered away down the trail, however, it was no laughing matter when I found they had devoured the ham, consumed the catch of fish that were keeping fresh in the stream, and generally created havoc.

Running Eagle

Chief Running Eagle was never happy unless he was racing his big raw-boned horse, Red. He was a great friend, and a mighty trader of horses, and whenever I needed a new mount or pack horse, he would get me one from the Reservation Indians. The corrals around the trading post would be the scene of racing and bragging and much lying until the animal was found to suit me. It was always the best, but strange to say, he always had a better.

The Spring Roundup

On the great plains of the West is the last romance of this age. Here under the rim of the Rockies, Pete and his companions round up the cattle, spring and fall, for branding and market. The long cloud of dust I see from the Studio windows looking out over the great valley, marks the passing of the cowboys, and this means I should get the coffee on the stove, for the boys will be coming in on their way back, to tell me the news of the Ranch and Town.



An Outlaw

A.C. Leigh Art.



Wanderers

A.C. Leigh '89



Rough Riding

A.C. Leighton



Early Morning Visitors.

A.C. Leighton.



Running Eagle

A.C. Leighton



Spring Roundups

A.C. Leighton









W.F. Murray

OLD COTE WINDMILL
CATMAST, MASS.



W.F. Murray
CONCORD BRIDGE AND BATTLE
POUNNETS, CONCORD, MASS.



W.F. Murray

WIMPELLOW'S
WAYSIDE INN
SABURY, MASS.



W.F. Murray
PAUL REVERE HOUSE
BOSTON, MASS.

THE HARBOR, GLOUCESTER, MASSACHUSETTS

4177



39179—PETRIFIED TREE, YELLOWSTONE NATIONAL PARK



COPYRIGHT BY HAYNES INC., YELLOWSTONE PARK, WYOMING

7-10-10



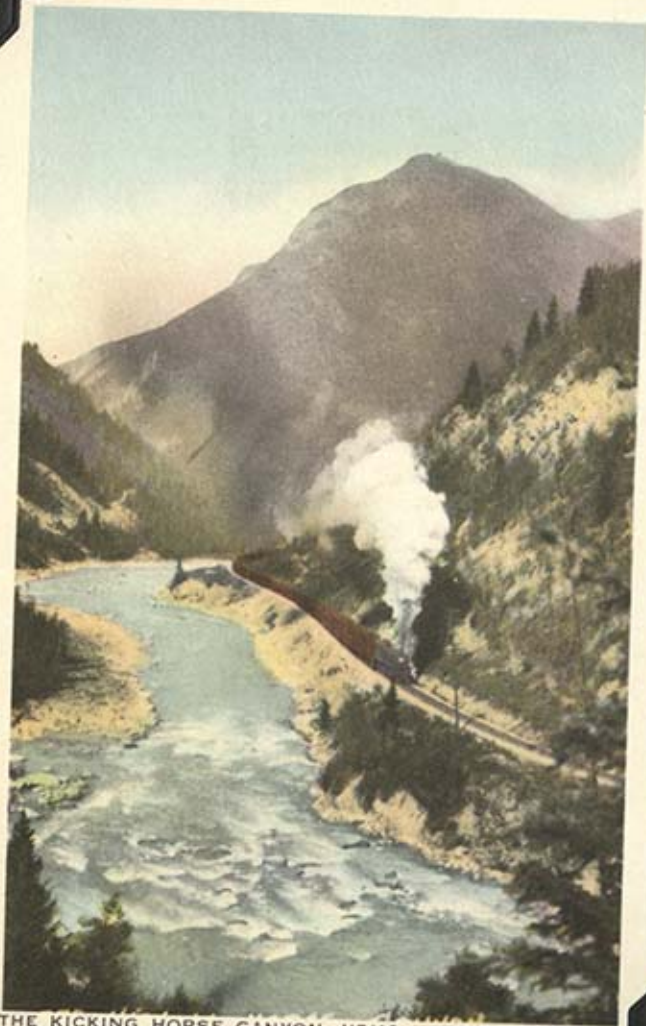
Portland Headlight.

2759

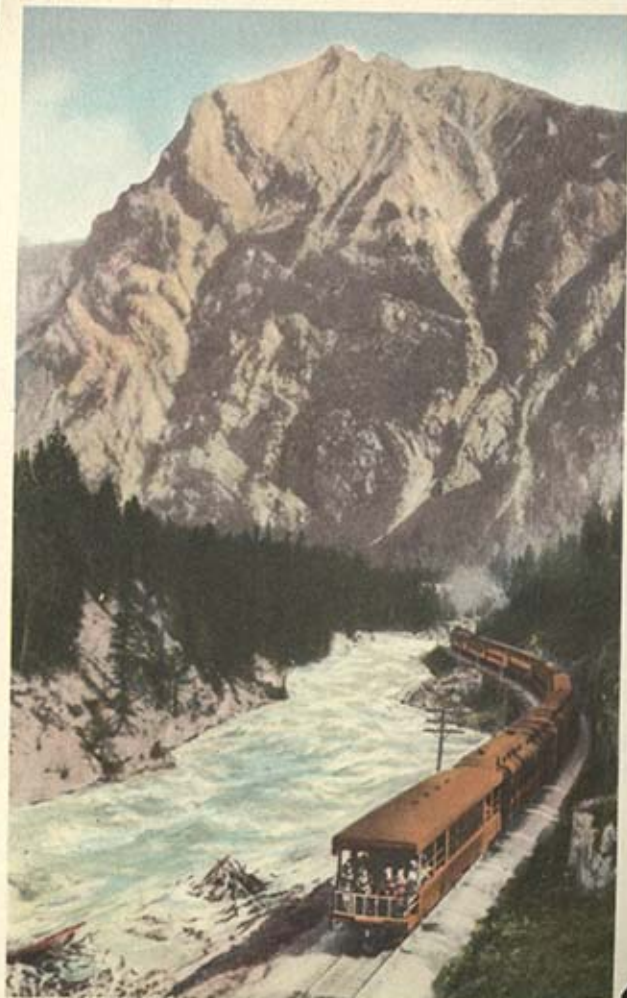
Made by Curt Teich & Co., Chicago, Ill.



REVELSTOKE, B.C. AND COLUMBIA RIVER.



THE KICKING HORSE CANYON, YHO NATIONAL PARK



MT. FIELD AND KICKING HORSE RIVER.
YHO NATIONAL PARK



FIELD HILL. YOHO NATIONAL PARK



MT. STEPHEN TRAIN ENTERING LOWER SPIRAL TUNNEL



EMERALD LAKE AND MT. BURGESS. YOH0 NATIONAL PARK, B.C.

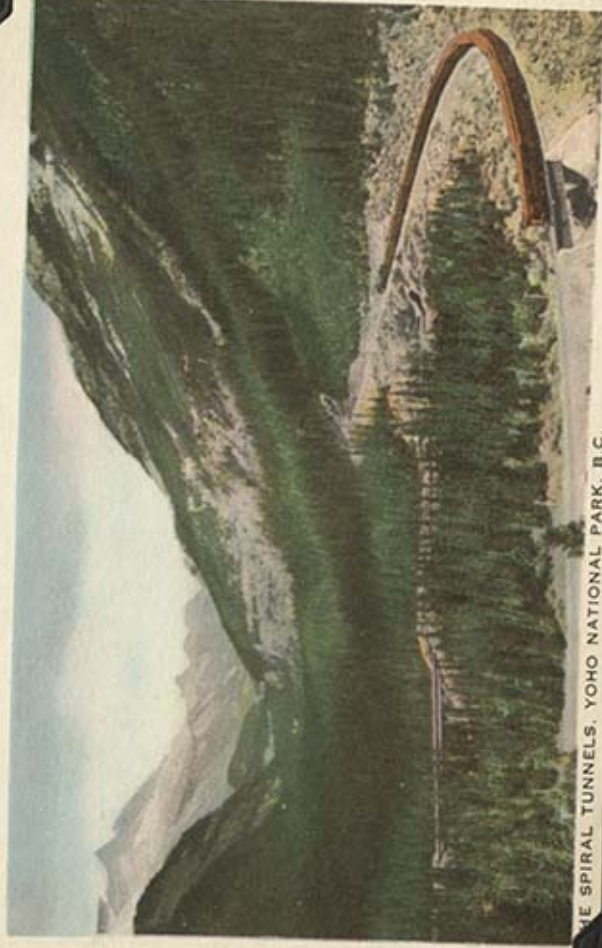


CATHEDRAL PEAK. ALTITUDE 10,454 FT.,
YOH0 NATIONAL PARK

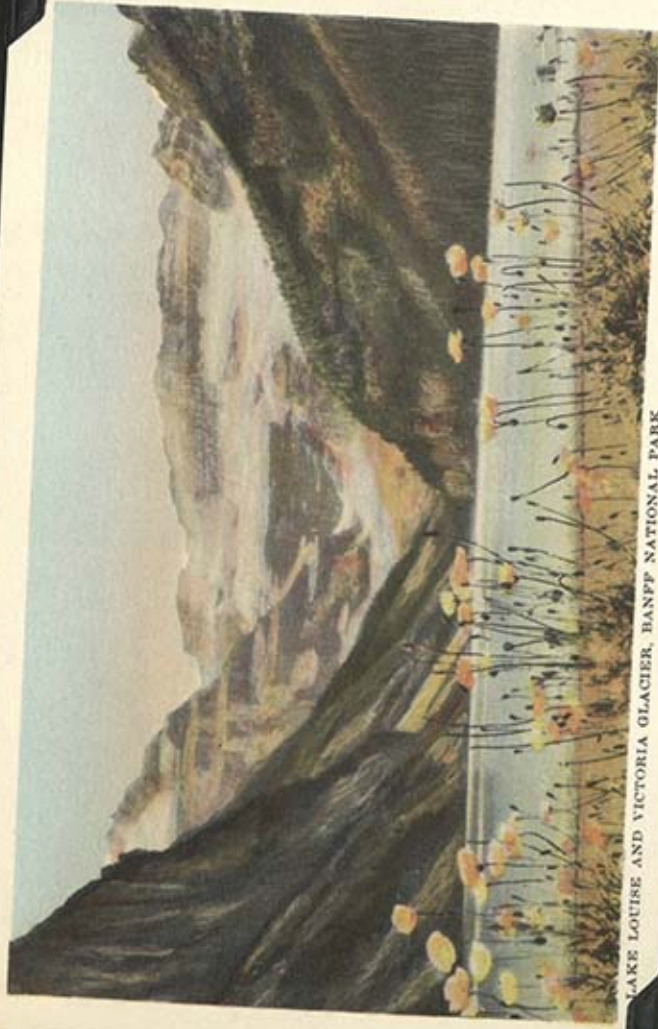
THE GREAT DIVIDE. WATERS FLOW WEST TO THE PACIFIC AND EAST TO THE



HUDSON BAY AND THE ATLANTIC OCEAN



THE SPIRAL TUNNELS. YHO NATIONAL PARK, B.C.



LAKE LOUISE AND VICTORIA GLACIER, BANFF NATIONAL PARK



LAKE LOUISE AND VICTORIA GLACIER, BANFF NATIONAL PARK



THE LAKES IN THE CLOUDS, BANFF NATIONAL PARK



MORaine LAKE AND THE VALLEY OF THE TEN PEAKS, BANFF NATIONAL PARK



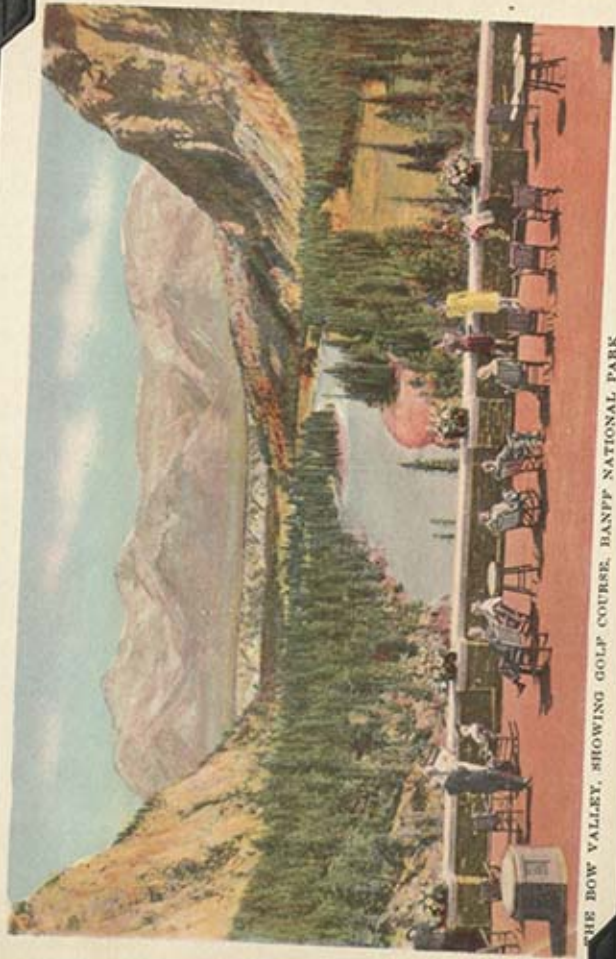
CHATEAU LAKE LOUISE. SWIMMING POOL IN FOREGROUND, BANFF NATIONAL PARK



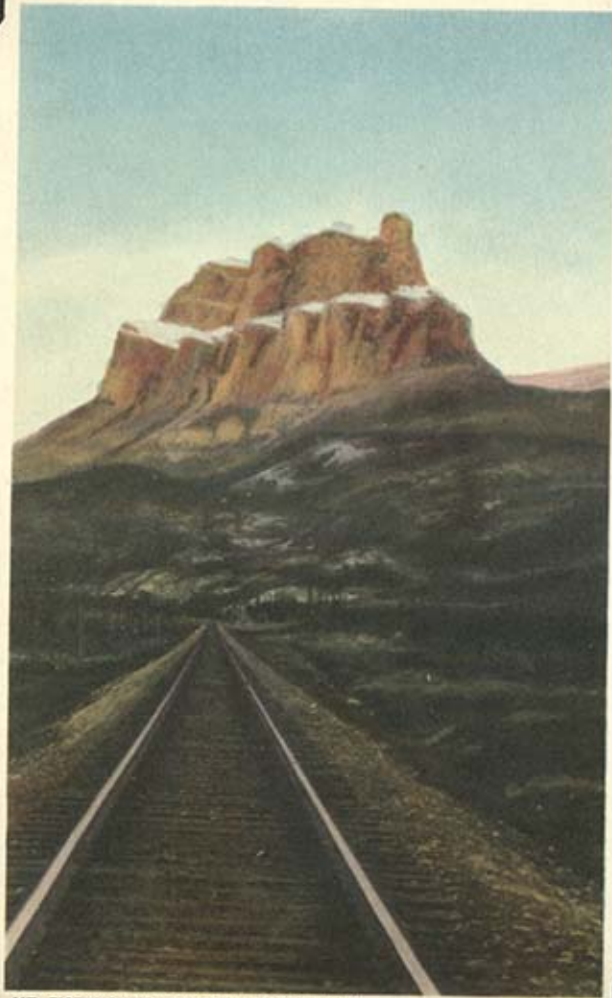
BANFF SPRINGS HOTEL, BANFF NATIONAL PARK



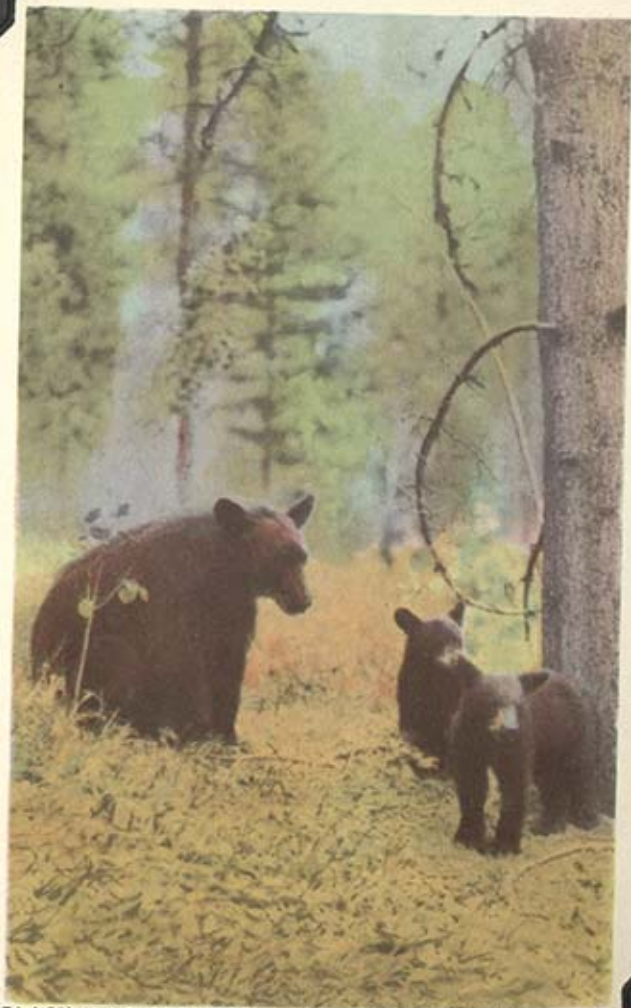
BANFF SPRINGS HOTEL AND BOW VALLEY, BANFF NATIONAL PARK



THE BOW VALLEY, SHOWING GOLF COURSE, BANFF NATIONAL PARK



MT. EISENHOWER, BANFF NATIONAL PARK



BLACK BEAR AND CUBS, BANFF NATIONAL PARK



BUFFALO OR BISON, BANFF NATIONAL PARK



MOUNTAIN SHEEP OR BIG HORN, BANFF NATIONAL PARK



RUNDLE, ALTITUDE 9665 FT., BANFF NATIONAL PARK



BEAUTIFUL BOW LAKE, SOURCE OF THE BOW RIVER, BANFF NATIONAL PARK



CASCADE MOUNTAIN. ALTITUDE 9825 FT., FROM ADMINISTRATION BLDG., BANFF



THE THREE SISTERS, BANFF NATIONAL PARK



RED INDIAN LODGE - SIOUX - NARROWS - LAKE OF THE WOODS - ONTARIO



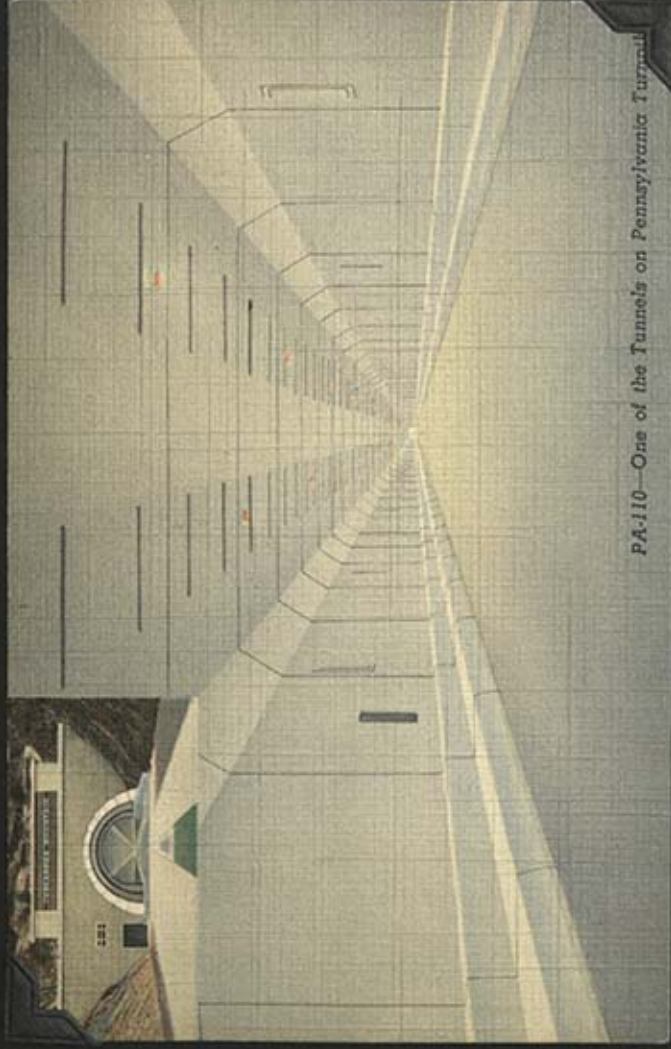
MORSON, ONTARIO

PA.112—One of the Interchanges on Pennsylvania Turnpike



PA.114—Longest Stretch on Pennsylvania Turnpike, East of Blue Mountain Tunnel





PA-110—One of the Tunnels on Pennsylvania Turnpike

KE-19

Tobacco Field "In Old Kentucky"



© CAUFIELD & SNOOK, LOUISVILLE

7A-W3276

ALLEGHENY COUNTY SOLDIERS MEMORIAL, PITTSBURGH, PA.

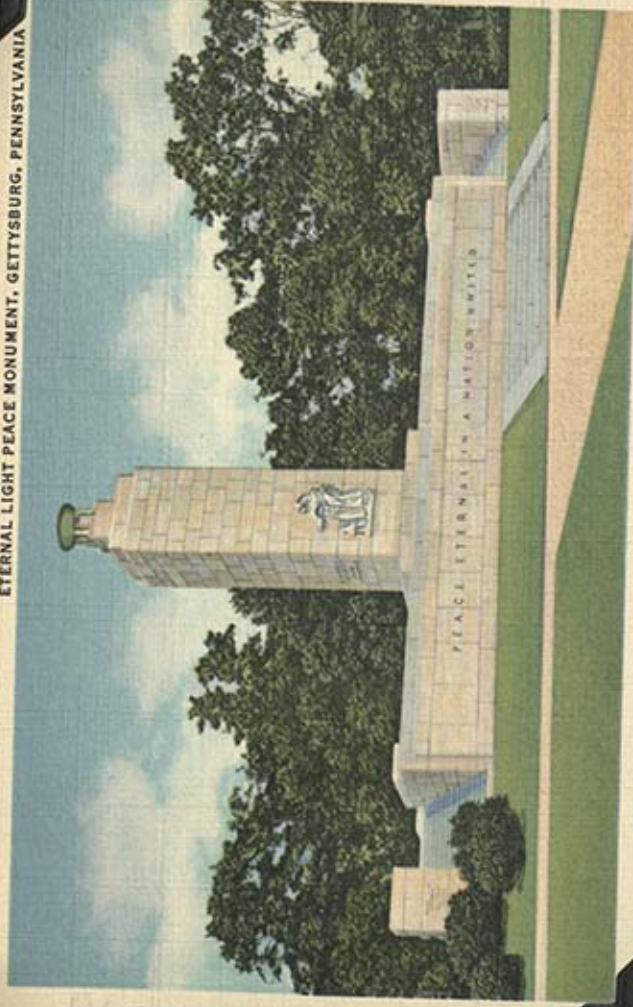


TGS1481

PENNSYLVANIA STATE MEMORIAL, GETTYSBURG, PA.

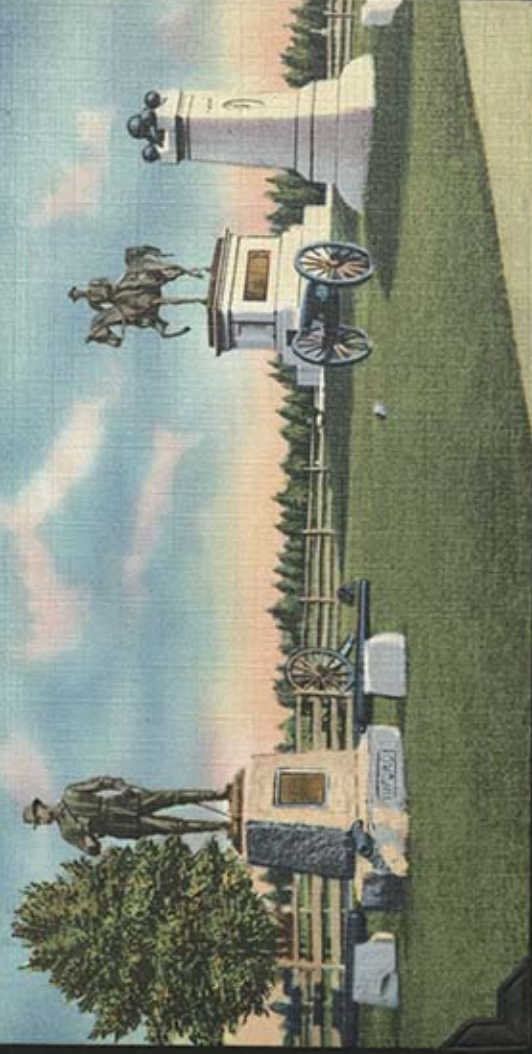


ETERNAL LIGHT PEACE MONUMENT, GETTYSBURG, PENNSYLVANIA



40

STATUES OF GENERALS BUFORD AND REYNOLDS, AND HALL'S MAINE BATTERY, GETTYSBURG, PA.



Hanging Rock, Mt. Pleasant, Lancaster, Ohio



A-59393-N



2007 Low Tide, Warrington





Four Mile Stretch, Perry Highway, U. S. Route 19

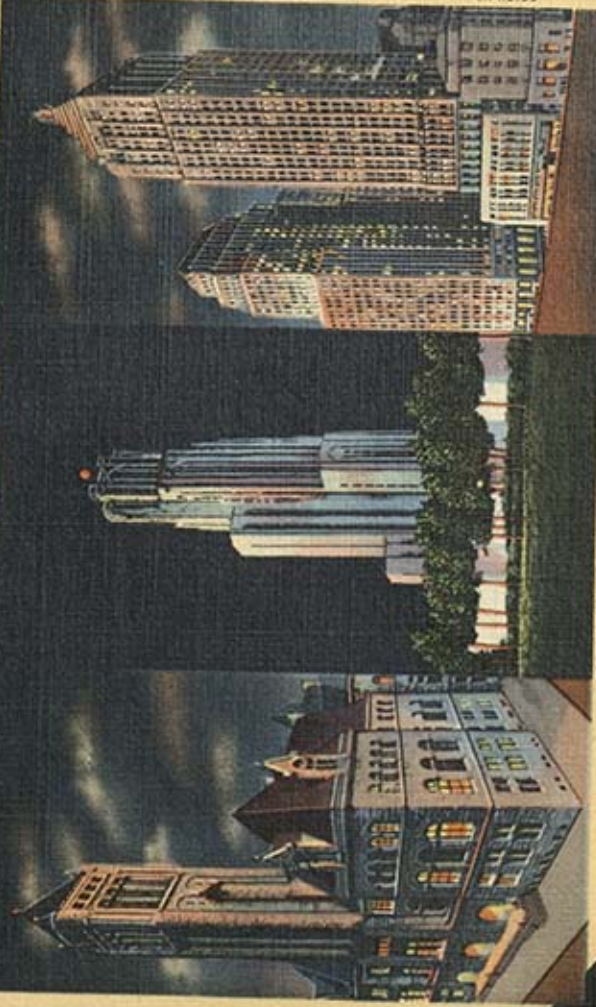
HERBARD AERIAL VIEW

604 DOWNTOWN PITTSBURGH, PA. SHOWING THE POINT WHERE ALLEGHENY AND MONONGAHELA RIVERS FORM OHIO RIVER



COPYRIGHT AERO SERVICE CORP., PHILADELPHIA, PA.

SA-11504



6A-H2135

CATHEDRAL OF LEARNING AT NIGHT, PITTSBURGH, PA.

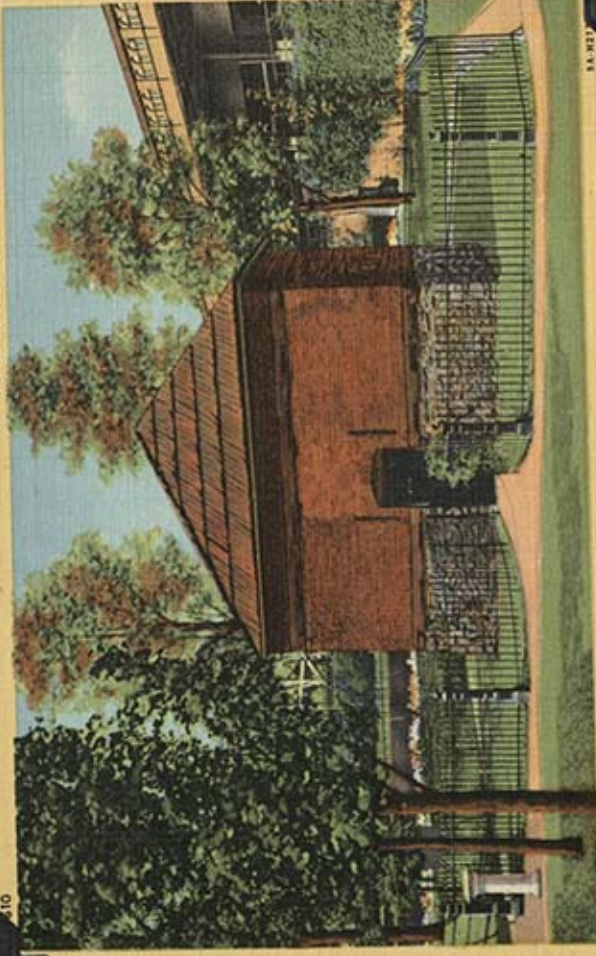


7A-H3487

NEW POST OFFICE AND FEDERAL BUILDING, PITTSBURGH, PA.



BLOCK HOUSE, BUILT 1764, PITTSBURGH, PA.



Beauty Scene near CORAOPOLIS, PA.

L-98



Beauty Scene near CORAOPOLIS, PA.

11738



PA-329

Pennsylvania State Flower, Mountain Laurel



AR-1118



507—Southern Pacific "Daylight" Coast Line, Los Angeles to San Francisco, California



CURT TEICH & CO., INC.

OB 4679

Union Pacific "Streamliner" "City of Los Angeles", Calif.



70206



312—Bull Fight, Picador and Horse Charged by Bull



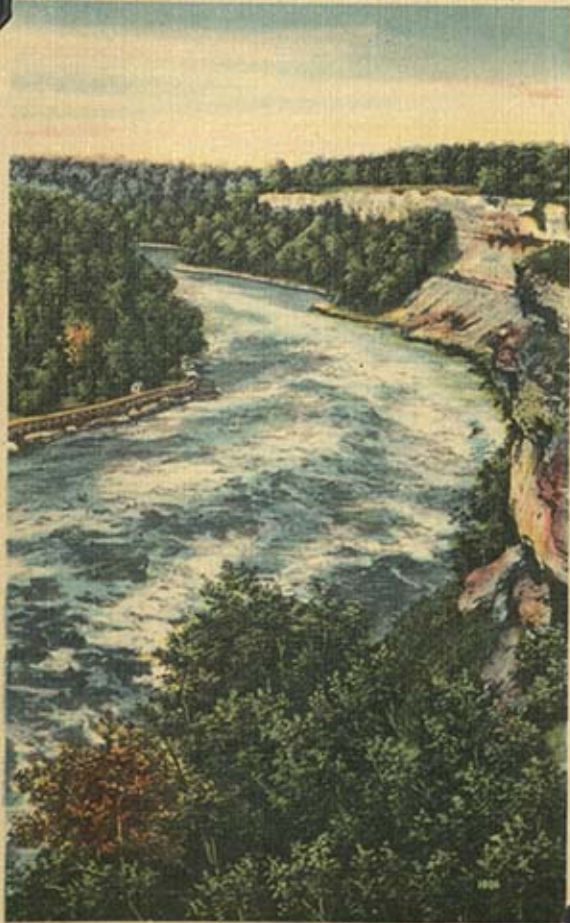
Juarez, Mexico



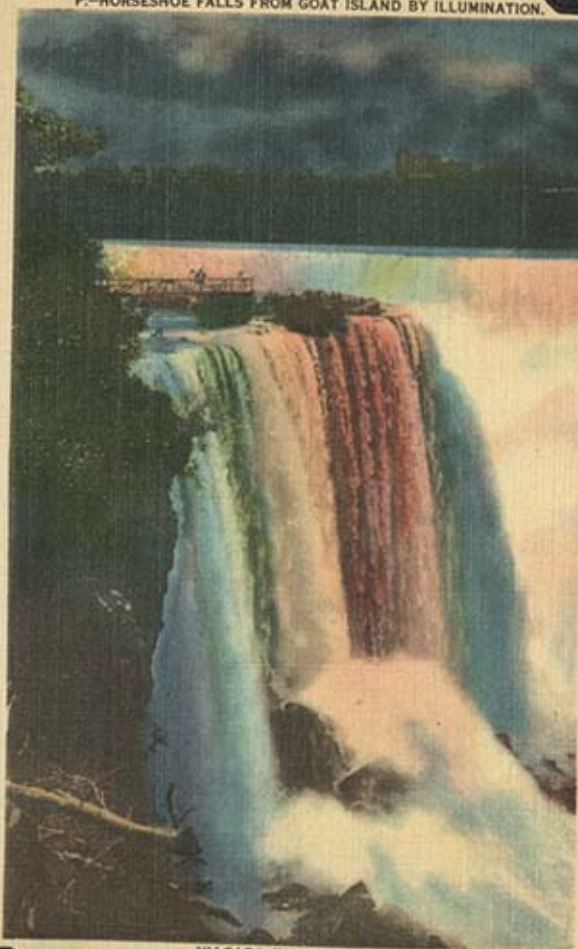
SASABE, ARIZONA

From a Watercolor by Stanford Stevens

316.—THE GORGE OF NIAGARA RIVER, NIAGARA FALLS



P.—HORSESHOE FALLS FROM GOAT ISLAND BY ILLUMINATION.



NIAGARA FALLS, N. Y.

44386

305.—AERO CABLE OVER WHIRLPOOL RAPIDS, NIAGARA FALLS.



American and Canadian Falls from Oakes Garden, Niagara Falls



General View of Falls looking through Rainbow Bridge, Niagara Falls

NT-19



(513)

THE BEAUTIFUL EMPRESS HOTEL, VICTORIA, B.C., CANADA.

Lilly Pond and Band Stand, Volunteer Park, Seattle, Wash.



27149



NATIONAL
PUBLISHING CO.
PHILADELPHIA, PA.

No. 3341

Made in U. S. A.



PHOTOGRAPHS

