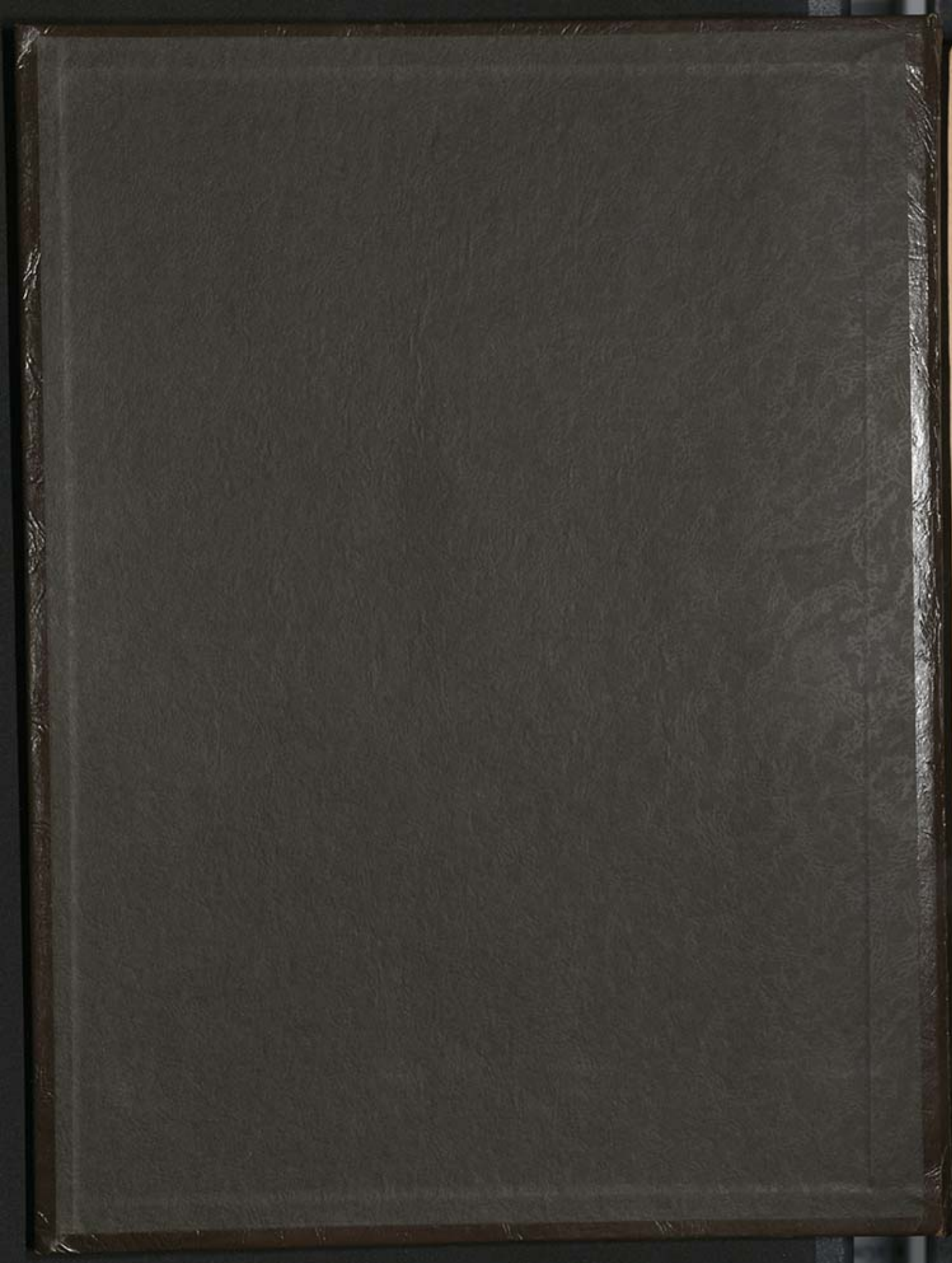


19







The Guildhall, Much Wenlock.



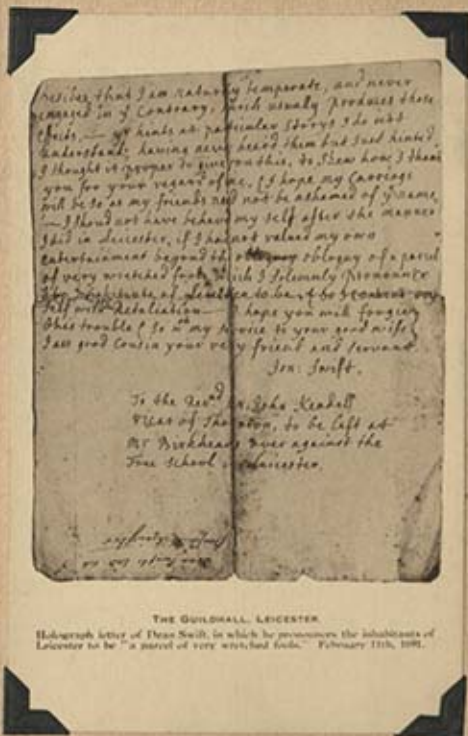
Council Chamber, Guildhall, Much Wenlock.



THE GUILDHALL, LEICESTER.

Misericord of the time of Queen Elizabeth bearing the letters "E.R." and the date "1586" above, and in the panels the initials of the Borough Chamberlains of that date—"G.O." and "T.C."—Gera. Oldham and Thos. Chittall.

The Misericord panels have been painted over with letter devices.



THE GUILDHALL, LEICESTER.

Handwritten letter of John Swift, in which he promises the inhabitants of Leicester to be "a parcel of very wretched fools." February 13th, 1691.

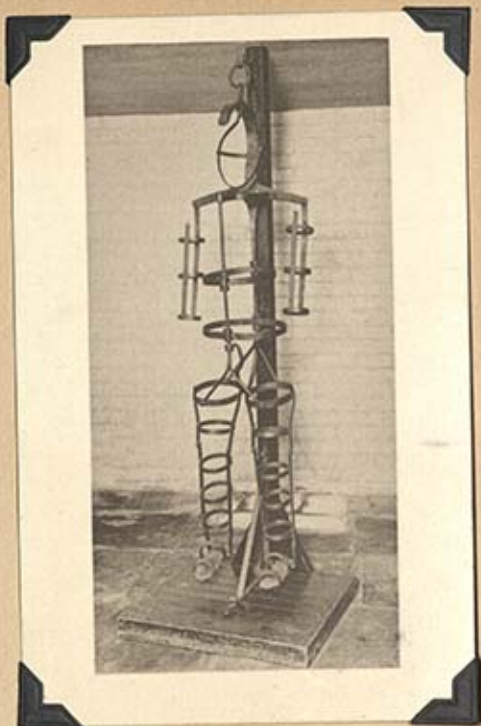
resides that I am naturally temperate, and never  
 engaged in of Controversy which usually produces these  
 Effects. — yet have at particular times I do not  
 understand, having never heard them but said hints,  
 I thought it proper to give on this, to show how I thank  
 you for your regard of me, I hope my Carriage  
 will be so as my friends will not be ashamed of it, I am  
 — I should not have behav'd my self after the manner  
 shew'd in Leicester, if I had not valued my own  
 Entertainment beyond it, I should have oblig'd a parcel  
 of very wretched fools, with I solemnly promise  
 to be a parcel of fools, to be a parcel of fools, I  
 will be a parcel of fools, I hope you will forgive  
 this trouble I do to my friends, to your good wife,  
 I am your very friend and servant  
 John Swift.

To the Ward of John Rendell  
 Ward of the town, to be left at  
 Mr. Brickhead's door against the  
 Free School in Leicester.

John Swift  
 Feb 13 1691



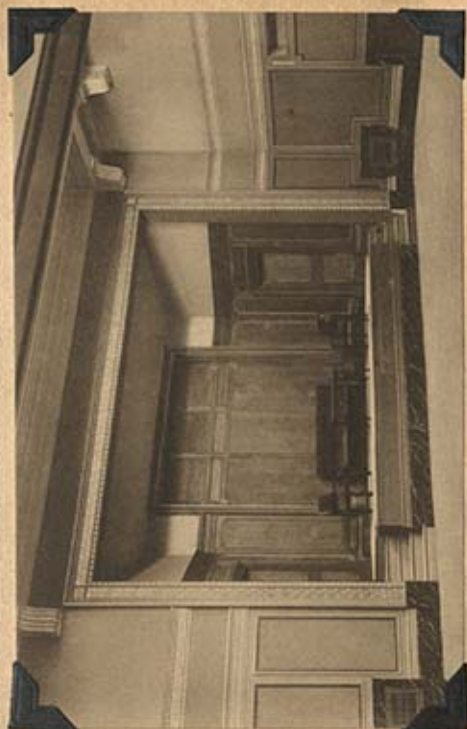
Court of Justice, Guildhall, Much Wenlock.



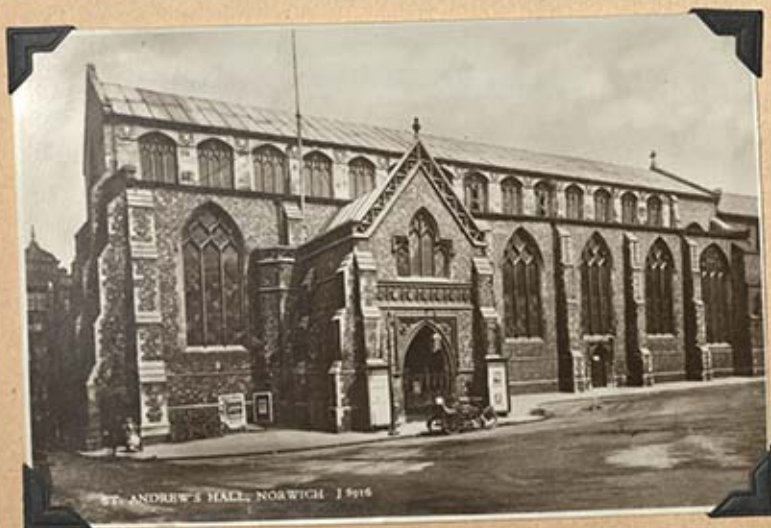
1904. The Guildhall, Winchester. J. H. J. & Co.



GUILDHALL AND WAR MEMORIAL, NORWICH.



The Guildhall Norwich



ST. ANDREW'S HALL, NORWICH - 1916



THE GUILDHALL

Town Hall, Sandwich.

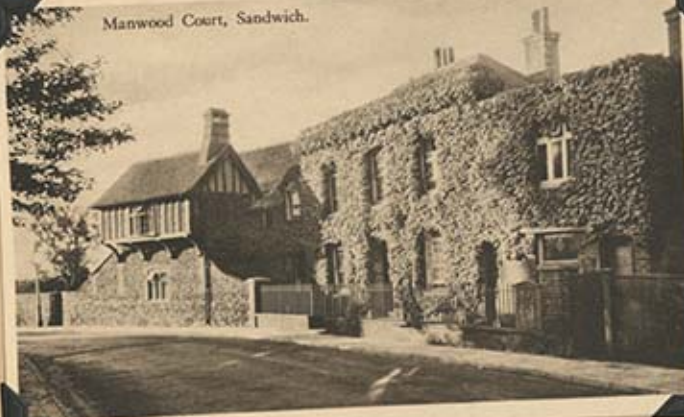


Interior Town Hall, Sandwich



Manwood Court, Sandwich

Manwood Court, Sandwich.













BRAY HEAD (CO. WICKLOW)



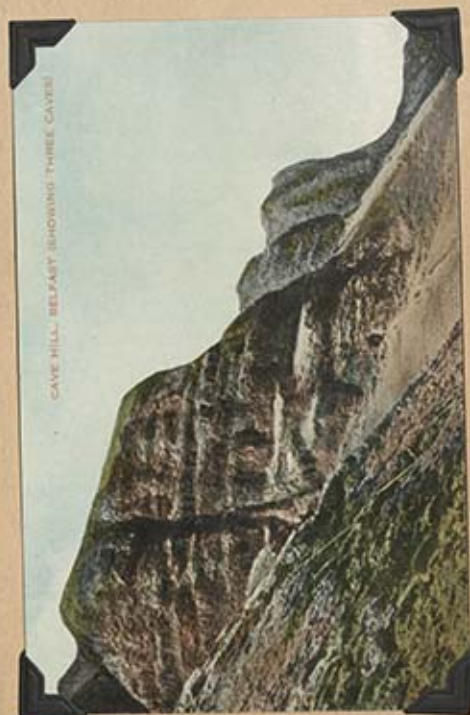
The Devil's Chimney, Chatterham



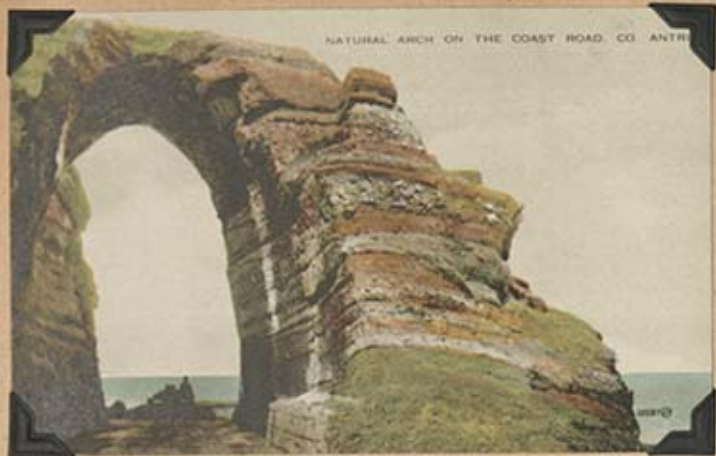
THE HONEYCOMB, GIANTS CAUSEWAY



WISHING WELL, GIANTS CAUSEWAY



CAVE HILL, BELFAST SHOWING THREE CAVES



NATURAL ARCH ON THE COAST ROAD, CO. ANTRIM



The White Lady, Antrim Coast Road.



The Madman's Window, Antrim Coast Road.



ROCKING STONE, BROWNS BAY, ISLANDMAGEE



Tears of the Mountain,  
Glens of Antrim, Glensniffe.



DRUIDS ALTAR, ISLANDMAGEE

4216



Druids' Altar, Islandmagee.

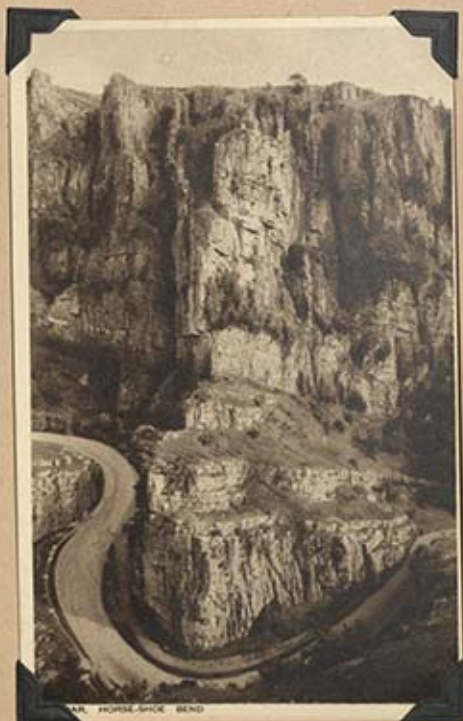


DEERIN GLENS, DROM.



GREAT FLOOD  
CREDDAR  
7 AUG 1920

15



MR. HORSE-SHAE BEND



The Lion Rock, Cheddar



In The Gorge, Cheddar Eimer Koene



JACOB'S LADDER



The Wind Cliff Rock - Cheddar

W. 387



By Rev. R. C. Gordon.  
**A MEDITATION**  
As we behold the Cheddar Giff,  
We feel who raised the Shedd's crags,  
Out of the ocean bed,  
And with our feet upon the hills that tower  
So high above our head,  
Who carved the Cheddar cliffs, and gave  
These towering wonderous firs,  
Whose green to purple hue pervade the  
Peak that so high we see,  
How I submit their beauty to Him,  
These water I adore,  
Wherever I behold the world,  
I look into His face and see,  
Oh, may my feet grow stronger  
As I gaze upon the scene,  
And if my life be brought to naught,  
May I stand and gaze before Him,  
That when our work is ended here  
I have His world with me,  
And His wisdom the perfect light  
Of His wisdom give,  
In seeing darkness, His hand worked,  
In seeing nature's face,  
What wonder that His hand brought to light,  
In wisdom that the plan,  
But light and darkness are so near,  
In the all-merciful eye,  
Thought to compare but a speck,  
That doth not pass the bar,  
Heard not, nor God, at all things,  
That would be an idolatry,  
That when I see a fountain,  
How grace and worship flow,  
Blessings God's grace  
Cheddar Gorge, Cheddar, Sept. 1906.



THE PINNACLES  
CHEDDAR GORGE



LAKE AND CUPPE CHEDDAR - A



CHEDDAR GORGE



THE PINNACLES Grotto  
CHURCH'S CAVE, CHEDDAR





BACK OF ROCK, MOUNTAIN TOP  
 SHOWS STRATIFICATION OF THE CLIFFS, WHICH ARE MADE OF LIME STONE & GYPSUM.  
 THE STRATIFICATION IS VERY EVIDENT, AND THE CLIFFS ARE VERY  
 STEEP. (233)

11650-44



The Organ Pipes  
 COUGHT'S CAVES, CHEDDAR



No. 22 Cought's Caves, Cheddar. "The Hindoo Temples"



The Niagara Falls, Cought's Caves, Cheddar



30 Feet across - 24 Feet high  
 COUGHT'S CAVES, CHEDDAR





THE PEARL OF BELLS, EDGAR'S CAVE, CHEODAR



In Solomon's Temple Gough's Caves, Cheodar



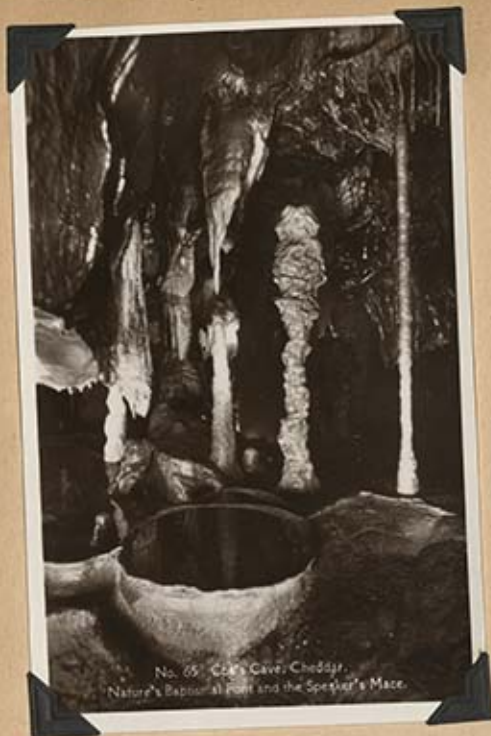
THE MANGANESE MIDGET STALACTITE, EDGAR'S CAVE, CHEODAR

62299



THE BAYS WINGS, COX'S CAVE, CHEODAR

62206



No. 65 Cox's Cave, Cheddar.  
Nature's Baptismal font and the Speaker's Mace.



No. 70 Cox's Cave, Cheddar, "The Mermaid"



No. 65 Cox's Cave, Cheddar, "The Speaker's Mace and the Baptismal Font"



Pillar of "Burdle" 35 feet high  
Solomon's Tomb  
COUGH'S CAVE, CHEDDAR



Malpais, Cough's Caotes, Fredday - Height 300ft.



Malpais, COOK'S CAVE, MARBLE CURTAIN



Marble Draperies in Park, Cook's Cave, Chubbuck



THE MAGIC POOL, COOK'S CAVE, CHUBBUCK

4207



**REMARKABLE DISCOVERY IN  
CHEDDAR CAVES.**

Mr. H. St. George Gray, the curator of the Truxton Museum, who was formerly assistant to the late General Pitt-Rivers, the celebrated archaeologist, has just examined, at the request of the Somerset Archaeological and Natural History Society, a remarkable human skeleton which has been discovered in Gough's Caves at Cheddar. The remains are believed by Mr. Gray to be those of a cave-dweller, who lived between the Palaeolithic and Neolithic ages. The skull is in many fragments, and encased in loam. The man had very prominent brows. The forehead is of the usual width, but, on the other hand, it is very receding. The lower jaw is powerfully formed, and far beyond the width of those of the present age. The skull is also very thick. The thickest part of the frontal bone is nine millimeters, while the average of the present day is only seven millimeters. The skeleton was found between two layers of stalagmites. The height of the man was 5 feet 2½ inches. In the Stone Age the average height of a man was only about 5 feet 3 inches or 5 feet 4 inches, and that of a woman 4 feet 11 inches. The shin bone is fat, which is never the case at the present day. Flint implements were found near the skeleton of the type used by cave men.



Skeleton of Prehistoric Man, found at Gough's Caves Cheddar: 10000 to 12000 years' old.



592/71 Coran of Aileach, near Londonderry



Grianan Fort, near Londonderry.



THE WHITE HORSE WEYMOUTH



EMLEY CASTLE  
SEMPITAL



SEMPITAL IN HOLWOOD PALACE GARDEN



SEMPITAL MILLER BRIDGE





St. Anne's Hall, Halverton.



ST ANNE WELL HALVERTON



UPWEY WISHING WELL



PAWNG STOCK





LLANGOLVEN LADIES

N. 1553.



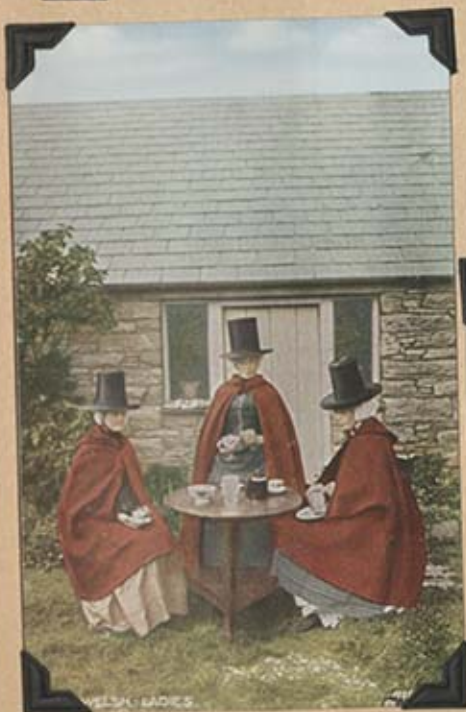
1554. THE WILLOW NATIONAL COSTUME - LADIES OF



1555. THE LADIES OF LLANGOLVEN.







WELSH LADIES



MARY KELYNACK

The old Neigbt Kelynack, who at 80 years of age, visited from Penzance to London with her feet shod in her bonnet. In 1842 Queen Victoria, who accepted 1 lb. of The finest wool as a present from Penzance.



DOLLY PENTREATH OF MOORHOLE

The last person who conversed in Ancient Cornish, and whom Daniel Berrington interviewed in 1794, when he visited Cornwall to study and preserve records of the dying language. Died in 1851 aged 88.



VAN DROYSEN SISTERS  
 ELSA 8 FT. 4 IN.  
 HILDR 7 FT. 4 IN.



SALLY WATKINS'S COTTAGE  
 TENNESSEE  
 THE HALL



SALLY WATKINS'S COTTAGE • WITH HILFAX GENTLEMAN • THE DINING ROOM



SALLY WATKINS'S COTTAGE • WITH HILFAX GENTLEMAN • THE BED ROOM



ARDEN'S HOUSE, NEAR STRATFORD-ON-AVON



MARY ARDENS COTTAGE, WILMCOTE, STRATFORD-ON-AVON.

R21E 790.45



View of Mary Ardens Cottage



MRS. HATHAWAY'S COTTAGE, STRATFORD-ON-AVON, (19)



View of Mrs. Hathaway's Cottage



HATHAWAY'S COTTAGE, STRATFORD ON AVON



Ann Hathaway's Cottage, Stratford-on-Avon



4450 THE LITTLE TITS DEN, ANNE HATHAWAY'S COTTAGE, STRATFORD-ON-AVON



The Parlor, Ann Hathaway's Cottage, Stratford-on-Avon.

Photo, J. J. Ward, Coventry



ANNE HATHAWAY'S COTTAGE, THE ELIZABETHAN BEDCHAMBER



THE LIVING ROOM, ANNE HATHAWAY'S COTTAGE.

F 100



THE KITCHEN, ANNE MATHREW'S COTTAGE



THE LEANER BENCH, ANNE MATHREW'S COTTAGE, BOSTON



THE DINING ROOM, ANNE MATHREW'S COTTAGE



ANNE MATHREW'S COTTAGE, THE WELL



ANNE MATHREW'S COTTAGE, THE STAIRS



COURTING SETTLE, ANNE HATHAWAY'S COTTAGE, STRATFORD ON AVON



St John and Green, Southwold



Gunhill, Southwold



STRATFORD-ON-AVON

A MEMENTO OF SHAKESPEARE 1564-1616



SHAKESPEARE'S HOUSE, STRATFORD ON AVON.



SHAKESPEARE'S BIRTHPLACE, STRATFORD ON AVON



Chamberlain's Birthplace

FINCH-KERR



GARDEN, SHAKESPEARE'S BIRTHPLACE, STRATFORD ON AVON



SHAKESPEARE'S STUDY, THE BIRTHPLACE, STRATFORD ON AVON



SHAKESPEARE'S STUDY, THE BIRTHPLACE, STRATFORD ON AVON







The Library, Shakespeare's Birthplace, Stratford-on-Avon.

Photo, J. J. Ward, Coventry



SHAKESPEARE MEMORIAL THEATRE, STRATFORD-ON-AVON (1)

1914-15



SHAKESPEARE MEMORIAL THEATRE, STRATFORD ON AVON



THE FALSTAFF CUP BY THE MARY II.  
(near The Monument, City) 1600-1609.





*Drawing Room, (West), Ye Olde Hostel of God-Begot, Winchester.*

Historical Notes  
 on  
 Ye Olde  
 Hostel  
 of  
 Godbegot



OLD CHESIL RECTORY, WINCHESTER.

218340 JY



*Reading, Writing and Smoking Lounge,  
 Ye Olde Hostel of God-Begot, Winchester.*



98 GOD BEGOT HOUSE, WINCHESTER



*Side of Hostel of God Begot, Winchester*



*Side Hostel of God Begot, Winchester*



*Reading, Writing and Smoking Lounge  
Side Hostel of God Begot, Winchester*



*Old Chesil Rectory, built 1430, Oldest House in Winchester*



*J. S. Stone, Old Chesil Rectory, Winchester*



THE OLDEST BAR IN ENGLAND, "ROYAL OAK," WINCHESTER.



J.I. The Entrance, Old Chival Restory, Winchester



The Cat and Fiddle Inn, near Buxton  
HIGHEST FULLY LICENSED HOUSE IN ENGLAND  
1,100 FEET ABOVE SEA LEVEL



The Fighting Cocks,

St. Albans.



ALBANY, YE OLD FIGHTING COCKS—ENGLAND'S OLDEST INN

51



The "Sir John Barleycorn", Cadnam



YE OLD FIGHTING COCKS, ST. ALBANS. (189) 251077 JK  
(THE OLDEST INHABITED LICENSED HOUSE IN ENGLAND)



"The Haycock," Warrford



ON THE HIKERS HOSTEL



FURBERGATE, YORK.



100A, THE OLD BLACK BOXX.



THE GUEST INN, LICENSED 1494. CHESTER.



13, THE PRIAR-HOUSE  
BENET ST., CAMBRIDGE.  
A.D. 1500.



THE FALCON INN, CHESTER.



Micawber's Little Inn, Canterbury.



**R. BOLLAND & SONS, Ltd.**  
**EASTGATE ROW, CHESTER**  
*Historic Bride Cake Makers to the Royal Family*



**HIGH CLASS RESTAURANT. GRILL ROOM**  
 (FULLY LICENSED)  
**LADIES' TEA LOUNGE. TRIO DAILY.**  
 FINEST CONFECTIONERY. CHOCOLATES.  
 TABLE D'ELICACITE. CONTINENTAL COMESTIBLES.



COPYRIGHT THE "LITTLE INN" OF CHARLES DICKENS.  
 CTY. 42. LITTLE INN LTD. (INCORPORATED IN ENGLAND)  
 CANTERBURY



BEAR AND BILLET, CHESTER.

CR 88



HARVARD HOUSE, STRATFORD-ON-AVON



GARRICK INN AND HARVARD HOUSE, STRATFORD-ON-AVON. FOX



OLD HOUSE & GARRICK INN, STRATFORD-ON-AVON







BEAN AND EYE INN, LINCOLN



HALLS INN, LINCOLN



ST. PETER'S INN, LINCOLN



High Street, Epping

129004



Salisbury, Old George Hotel



*The Ship Hotel, Merer.*



YE OLDE NEPTUNE INN, IPSWICH (1) 241180.24



THE SHIP HOTEL, IPSWICH



*The Bedchamber Room, The Ship Hotel, Ipswich.*



*The Boat Inn, Ferry & Church, Erbistock.*



GREAT WHITE HORSE HOTEL



McGowan's Cafe and Apartment, Ipswich



Great White Horse Hotel, Ipswich



'Cafe Blanchfleur' McIwan's, Ipswich



THE ARMS, ELM HILL, NORWICH



81816 Norwich, Maid's Head Hotel, Courtyard



81815 NORWICH, MAID'S HEAD HOTEL, FIREPLACE



Maid's Head Hotel, Norwich: Queen Elizabeth's Bedroom



10116 Robt. Ross Cambridge Duquesne Hotel.  
Copyright 1917





"At the Hop Pole at Tewkesbury, they stopped to dine; upon which occasion there was more bottled ale, with some more Mischief and some Port besides; and here, the case bottle was replenished for the fourth time. Under the influence of these com-  
 lined stimulants, Mr. Flowick and Mr. Ben Alton fell fast asleep for thirty miles, while Bob and Mr. Waller sang ditties in the dokey."  
 The Pickwick Papers. Chap. I. (Charles Dickens.)





22862.IV. TOWN TIME, STROUD. (9)



The Home of Paul Carter, the famous  
"The Kings Arms" Factory, Cheltenham, Glouce.



Adam and Eve Inn, Paradise, Stroud.





Painswick, Tibbywell Street, Showing Old Cottage



From the Courtyard of the Kings Head Inn, Stow-on-the-Wald, Glos.



Adam and Eve, Painswick



Interior of the Mill Inn, Withington



The Swan Hotel, Stowton

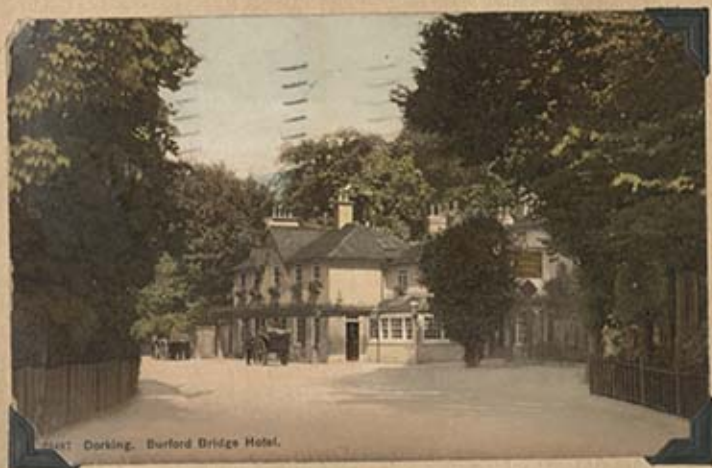




*The fleece hotel & Bingham library, Cirencester.*



THE HOTEL, CIRENCESTER, GLOUCESTER



West Dorset, Burford Bridge Hotel.



THE HOTEL, HOG'S BACK



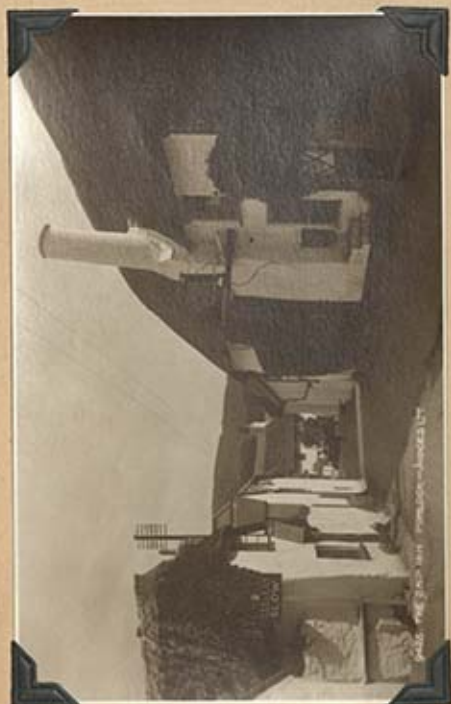
*The*  
**HOG'S BACK HOTEL**  
 SEALE - SUKKEY  
 TELEPHONE - KUNFOLD 133



HOTEL, TAUNTON



TAUNTON VALE FOXHOUNDS AT THE CASTLE HOTEL, TAUNTON, 11th JANUARY, 1904



SHERIFF'S TRUMPETERS, 1891-1904, CASTLE HOTEL, TAUNTON



THE STAG HUNTERS' INN, BRENDON.

37



Old Boss, Green Hill, Brabury



King John's Hunting Lodge, Axbridge.

WESTLEY 881



ST. MARY'S CHURCH & ABBEY HOTEL, ST. MALVERN



THE CROSS, BOZBURY.



Copyright  
Lith. 24

Ye Olde Talbot Hotel, Ledbury

Robert Turk & Sons  
Lith.



Old oak room  
Ye Olde Talbot, Ledbury



Ye Olde Talbot, Ledbury



Ye Olde Oak Room, 1366  
Talbot Hotel, Ledbury



Ye Olde Talbot, Ledbury



Feathers Hotel, Ledbury.



The Old King's Head, Shrewsbury.



Shrewsbury, Shropshire, England, 1908.



THE CROWN HOTEL,  
SHREWSBURY.  
(Opposite General Post Office)  
Telephone No. 2402.

MOTOR GARAGE  
under the charge of Mr. F. H. Graves.



THE KINGS HEAD SHREWSBURY - JUCEN



*Ludlow, "Feathers" Hotel, Coffee Room*



*ANGEL HOTEL, LUDLOW*



*FALSTAFF HOTEL, CANTERBURY*



*THE FALSTAFF, CANTERBURY*



*Ludlow, the Feathers' Hotel.*



THE CHANTRY COTTAGE TEAROOMS, SEVENOAKS



*The Chantry  
Collage*



A CORNER OF OLD SEVENOAKS  
SHOWING THE CHANTRY COTTAGE TEAROOMS



THE EXETER TONGUE



Grosvenor Arms Hotel, Buxton









THE KEIGWIN ARMS, MOUSEHOLE.

The 15th Century Manor House of the Keigwin Estate, the only house left standing when Mousehole was burnt by the Spaniards in 1599. In this house is preserved the cannon ball, which is said to have killed Jenkyn Keigwin. The ceiling of one of the rooms was ornamented with shields bearing men's heads, dolphins, scallop shells, and other devices.



RECON. THE SIDONS ARMS

55195



Mousehole, Keigwin Arms



Stratton, Old Tree Inn



LLANFAIR P.C., ANCESTY

NSNA TEA GARDENS

Ynys-y-Tŷ, Llanfairpwllgwyngyllgogerychwyrndrobwllllantysiliogogoch



Copyright  
BRIDGE END CAFE, MENA BRIDGE.



THE FISHGUARD BAY HOTEL.

*Under the management of the Great Western Railway Co.*



OAKWOOD PARK HOTEL CONWAY.



CASTLE HOTEL, ABERCORN.



Olde Winchester

of the 18<sup>th</sup> Century

St Cross  
Hospital  
Founded 1136



Plain Tower and Entrance to Brethren's Hall



Brethren's Hall  
Showing fine old timbered roof and quaint gear of Brethren



St. Mary the Virgin Statue - Beaufort Tower,  
St. Cross Hospital, Winchester



ST. CROSS HOSPITAL WINCHESTER



ST. CROSS WINCHESTER



WINCHESTER ST. CROSS HOSPITAL



WATER ST. CROSS HOSPITAL



The Brothers' Quarters, St. Cross Hospital, Winchester



*The Brethren, St. Cross Hospital, Winchester.*



*Oriel Window, St. Cross Ambulatory, Winchester.*



*The Brethren, St. Cross Hospital, Winchester.*



*Triple Norman Arch, St. Cross, Winchester.*



*The Kitchen, St. Cross Hospital, Winchester.*



*Ambulatory, St Cross Hospital, Winchester*



*Wauffarers Dole, St Cross Hospital, Winchester*



*The Kitchen, St Cross Hospital, Winchester*



*Wauffarers Dole, St Cross Hospital, Winchester*



*WAUFFARERS DOLE, ST CROSS HOSPITAL, WINCHESTER. 66  
9441500*



Brethren's Hall, St. Cross Hospital, Manchester



Copyright  
1917/18

St. Katherine's and War Memorial, Ledbury.

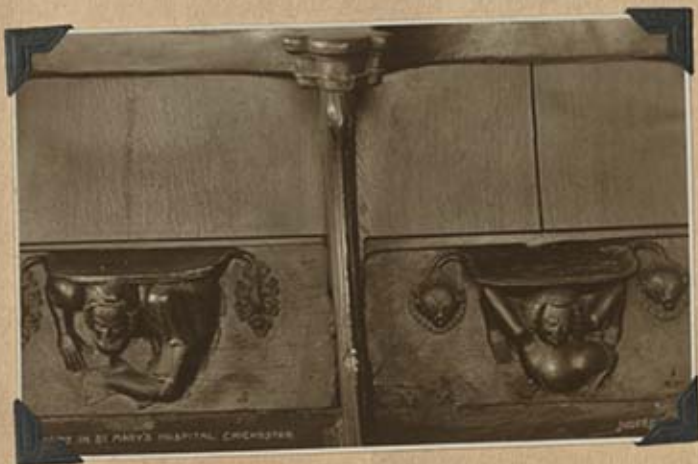
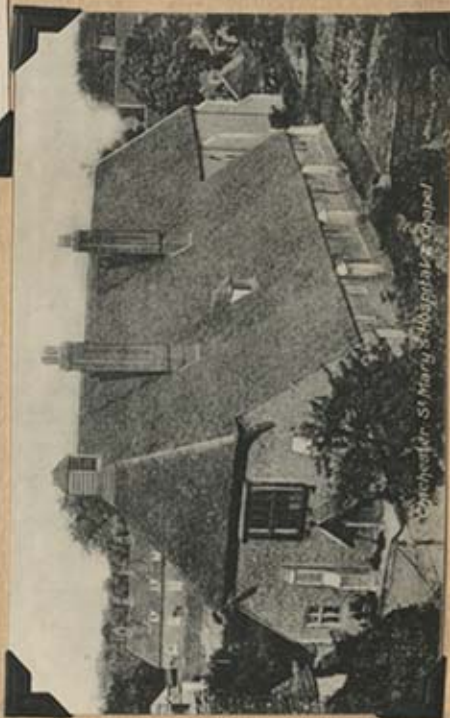


St. Catherine's Almshouses, Ledbury.



St. Catherine's Almshouses, Ledbury.







ST. MARY'S HOSPITAL, CHICHESTER



THE CHAPEL, ST. MARY'S HOSPITAL, CHICHESTER



Cassel Hospital, Buryland, Buxhurst



Cassel Hospital, Buryland, Buxhurst





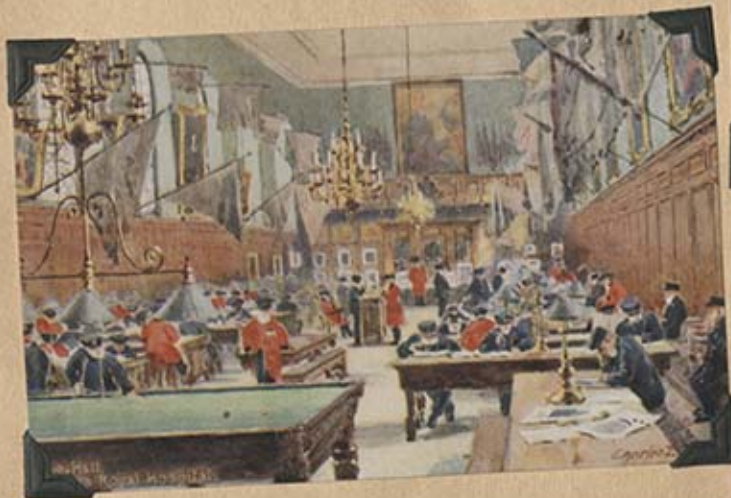




The Chapel  
of the Royal Hospital



Pensioners' Ward  
Royal Hospital, Chelsea



Hospital  
Royal Hospital



Red Uniform  
20 May 1800  
Hospital



Interior of Greyfriars Hospital, Coventry



LEICESTER HOSPITAL, WARWICK.



ENTRANCE TO  
THE LEICESTER HOSPITAL.

26



THE LEICESTER HOSPITAL, WARWICK.



THE COURTYARD, LEICESTER HOSPITAL, WARWICK. 25B



THE LEICESTER HOSPITAL, WARWICK.



THE COURTYARD, LEICESTER HOSPITAL, WARWICK.



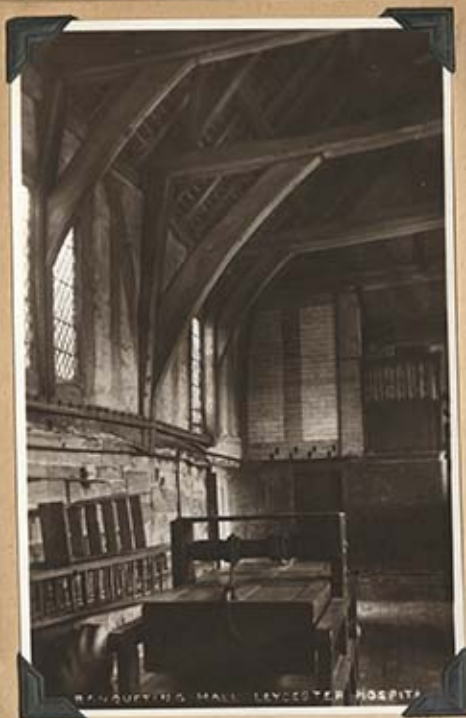
C. LEICESTER HOSPITAL, WARWICK.



LEICESTER HOSPITAL, WARWICK.



LEICESTER HOSPITAL, WARWICK.



MANUPUTTING HALL, LEYCESTER HOSPITAL



KITCHEN, LEYCESTER HOSPITAL, WARWICK



Brandon, Post Office, etc.



Post Office, Mingshead.







THE OLD POST OFFICE, EASTNOR.



MOLEH MADGE, POST OFFICE.



The Old Post Office, High Street, Sevenoaks.



Stannum Post Office  
Cornwall.



The Old Post Office, Corner of Glebeland Street, Merthyr.



The ancient Banqueting Hall, Huddington Court, Worc.

J. B. ...



Huddington Court, Warwickshire  
*Warwick House, famous for its associations with the 'Garden of Rest' in 1602.*

J. B. ...



Huddington Court, Warwickshire

J. B. ...



THE OLD WYKE, SHREWSBURY

PHO ...



Huddington Court, Worc.

J. B. ...

M3  
KEY SIZE

1/24/18



The Old Mint  
Shrewsbury.

Wm. 1906, No.



The Bear Steps  
Shrewsbury.

1010  
L. 1010  
1010



MADE  
IN  
U.S.A.